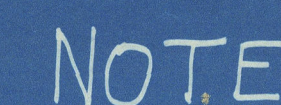
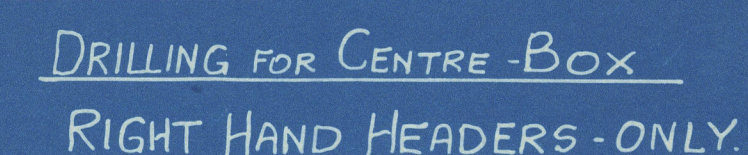


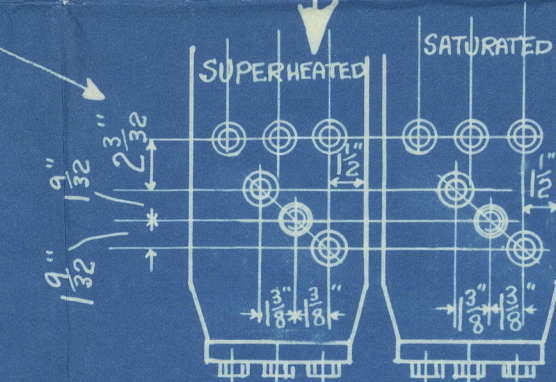
## DRILLING FOR WING-BOX ELEMENTS



DETAIL OF SUPERHEATER ELEMENT JOINT  
FULL SIZE.



VIEW SHEWING LOWEST ELEMENT HOLES  
WING-BOX ELEMENTS  
RIGHT HAND HEADERS ONLY.



SCALE:  $1\frac{1}{2}" = \text{ONE FOOT}$

<u>LIST OF MATERIAL FOR ONE BOILER</u>				
MARK	DESCRIPTION	NOOFF	MATERIAL	REMARKS
A	HEADERS	4	STEEL FORGINGS	1-PR RH & 1-PR LH.
B	" " FLANGES	4	M.S	7" SQ x 1 1/2" THICK
C	STRAPS	8	STEEL	DRG NO MM 197
D	BASE PLATES	4	M.S	" " MM 203
E	ANGLE SUPPORTS	2	M.S.	3"x2 1/2"x 1/2" x 2'4" LONG
E <sup>1</sup>	" "	2	M.S	" " x 1'9" "
G	3/4" WHIT STUDS	32	M.S	DRG NO MD 217
H	3/8" " BOLTS	24	M.S	" " MD 290
J	3/4" " NUTS	32	STEEL	" " ME 62
K	3/8" COLLAR STUDS	72	M.S	" " MD 280 A
L	3/8" WHIT NUTS	72	STEEL	" " ME 65
M	3/4" DOGS	72	STEEL FORGINGS	" " MC. 1070
O	JOINT RINGS	144	DRG FORGED M.S STUDS	" " MG 370
R	PIPE FLANGES	4	M.S.	1/8" SQ x 1 1/2" THICK

# TITLE HEADERS

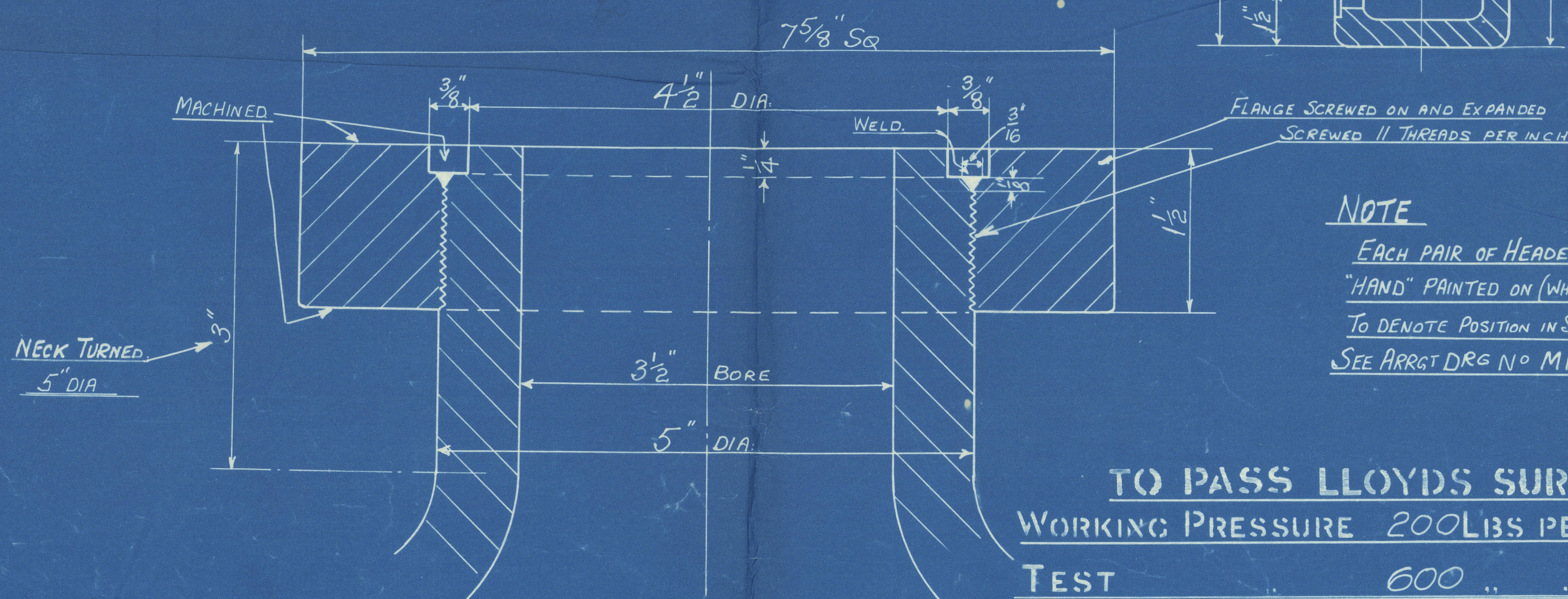
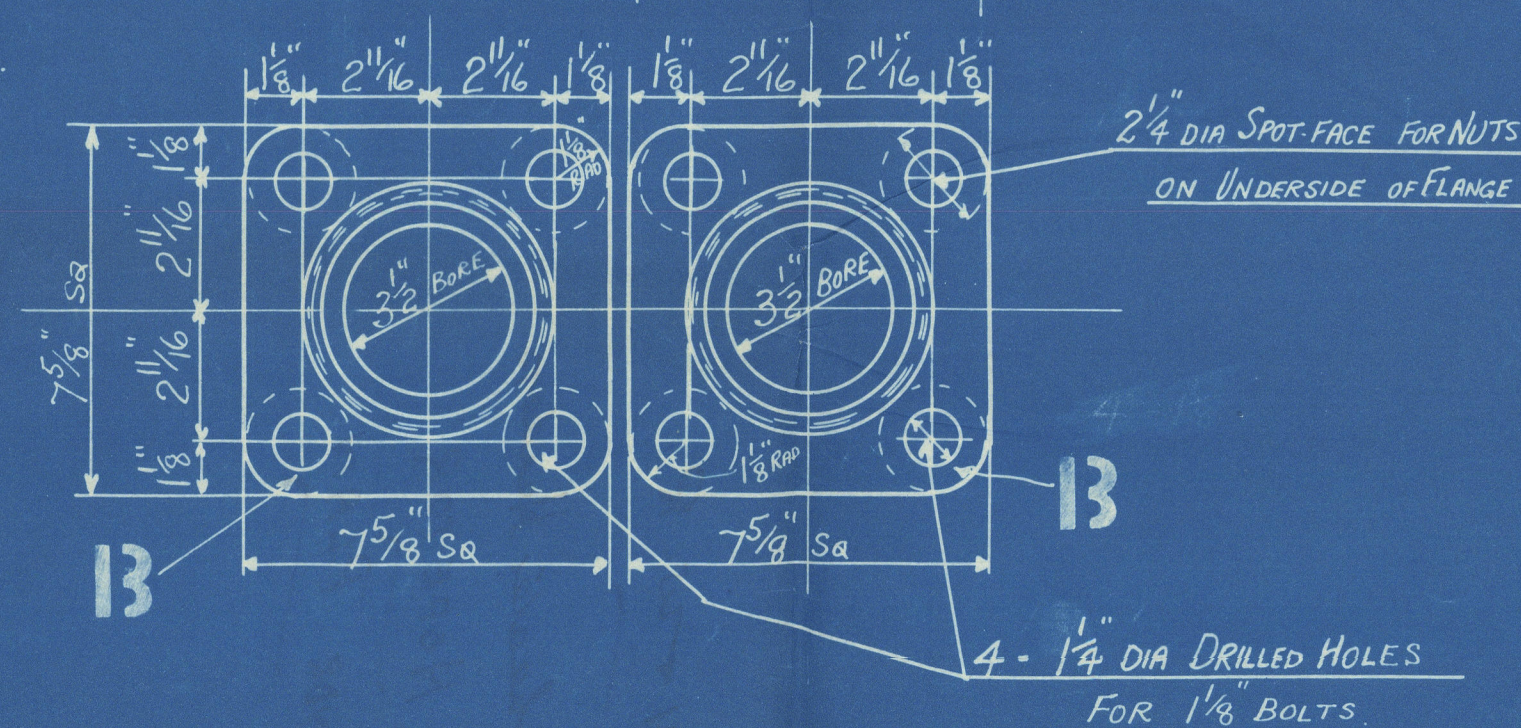
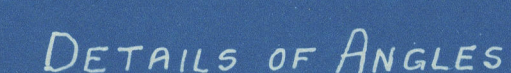
ORDER NO'S		REF	CND	DRAWING NOS
	6355 <sup>M</sup>	6355 <sup>3</sup>	4/11/84	MA 69 20A

SWAN HUNTER & WIGHAM RICHARDSON LTD

# Job № 109

S.S. "HOPE TOR"

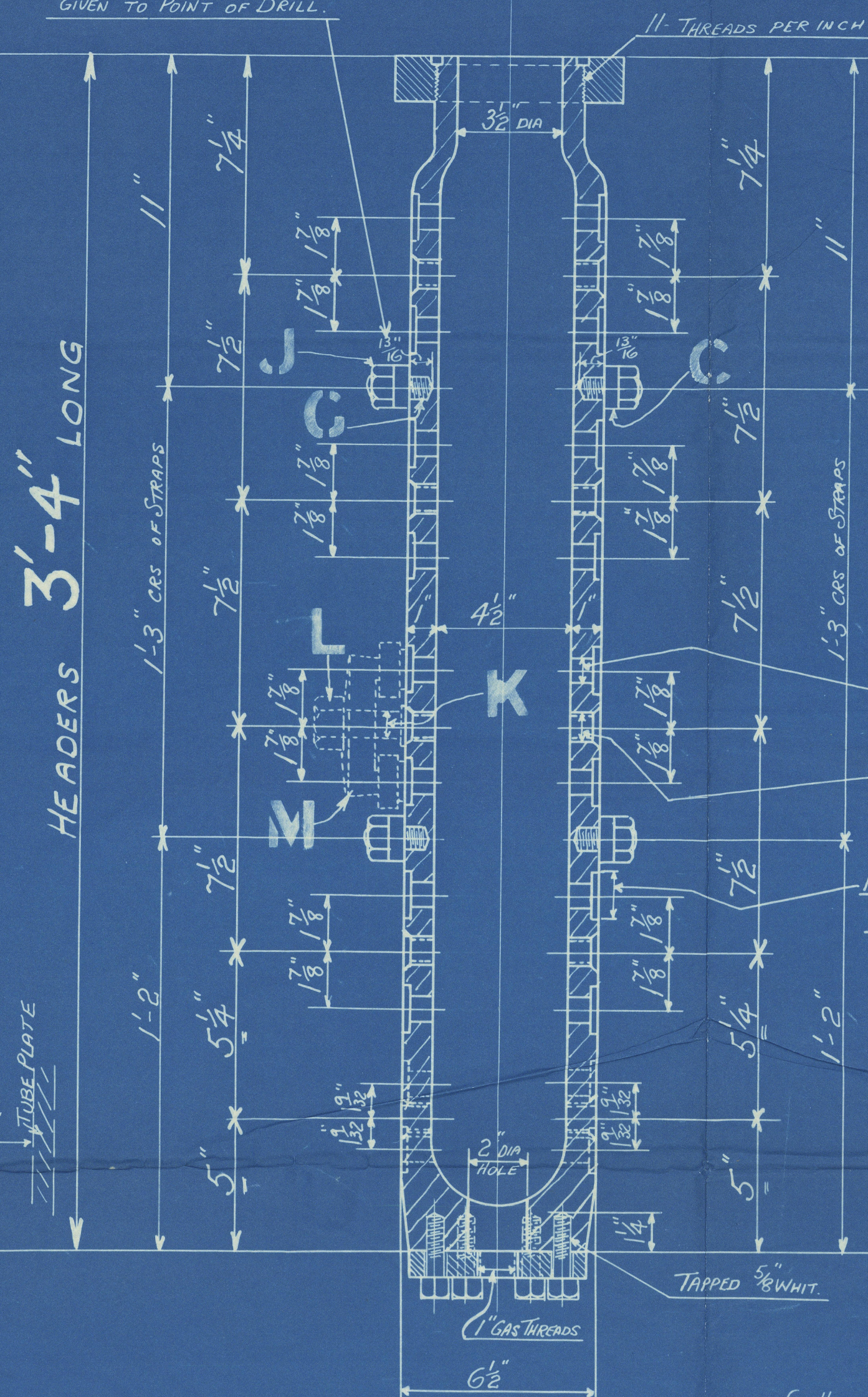
Lloyd's Register  
Foundation



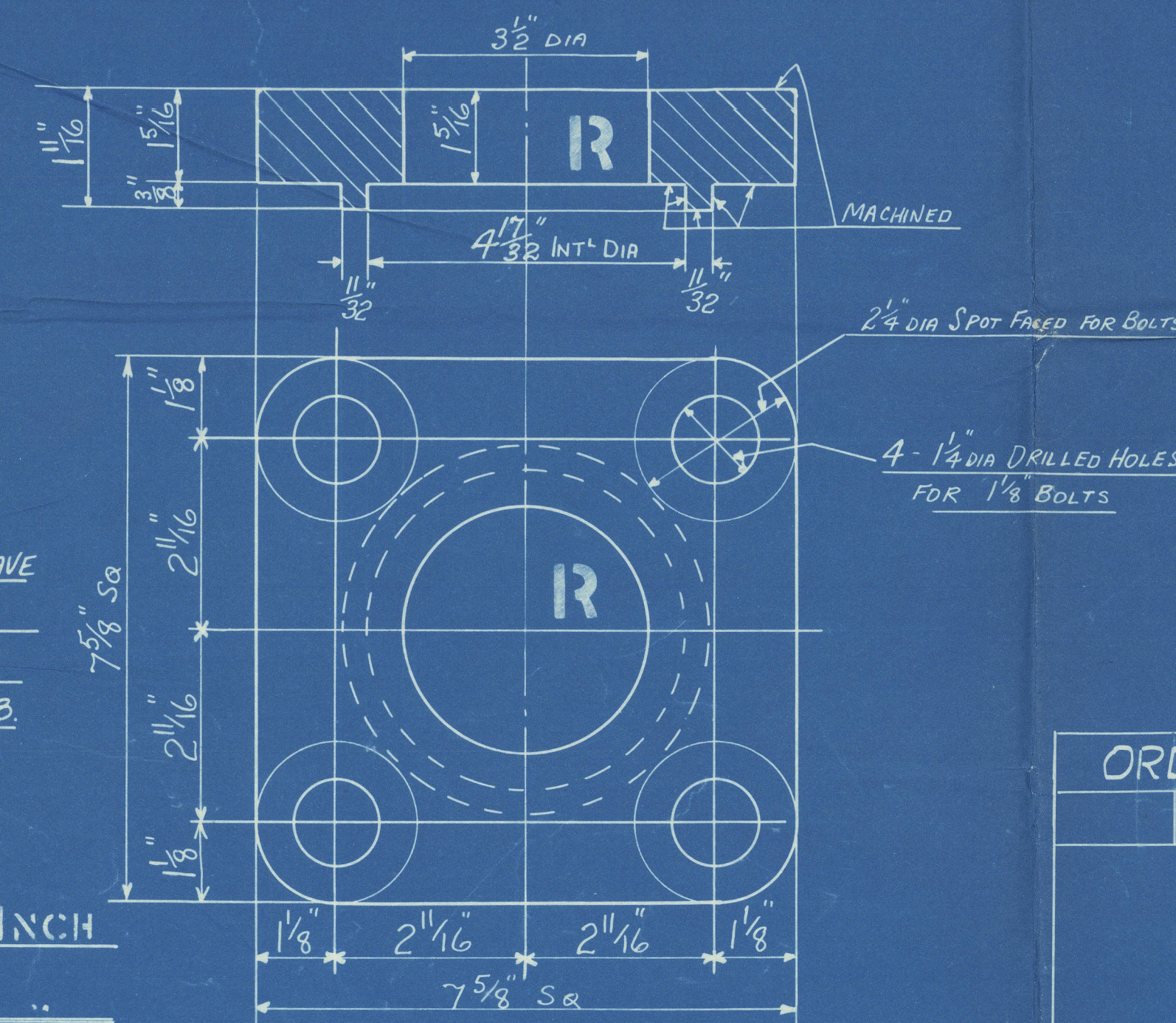
### DETAILS OF HEADER FLANGE

*FULL SIZE*

PIPE FLANGE(S) TO BE BOLTED TO HEADER(S)  
WHEN BEING DESPATCHED  
<sup>1</sup>/<sub>32</sub>" JOINT RING TO BE PLACED IN HEADER FLANGE GROOVE



## —DRILLING FOR BASE



## DETAILS OF PIPE FLANGE

SCALE: HALF SIZE

NOTE

EACH PAIR OF HEADERS TO HAVE  
"HAND" PAINTED ON (WHITE PAINT)  
TO DENOTE POSITION IN SMOKE BOX  
SEE ARRGST DRG NO MN 9880B.

TO PASS LLOYDS SURVEY  
WORKING PRESSURE 200 LBS PER SQ. INCH

TEST 600

SCALE

3" = ONE FOOT  
AND AS MARKER

DOWN TCD

and : 9/14/20

Aliven 9/11/54



S. H & W. R.

Superheater Headers

S.S. HOPETOR

AMENDED PLAN

(B)

---

96" HOPETOR"

NEWCASTLE ON TYNE.

Report No. 92498.

---

W 117- 0057



© 2021

Lloyd's Register  
Foundation