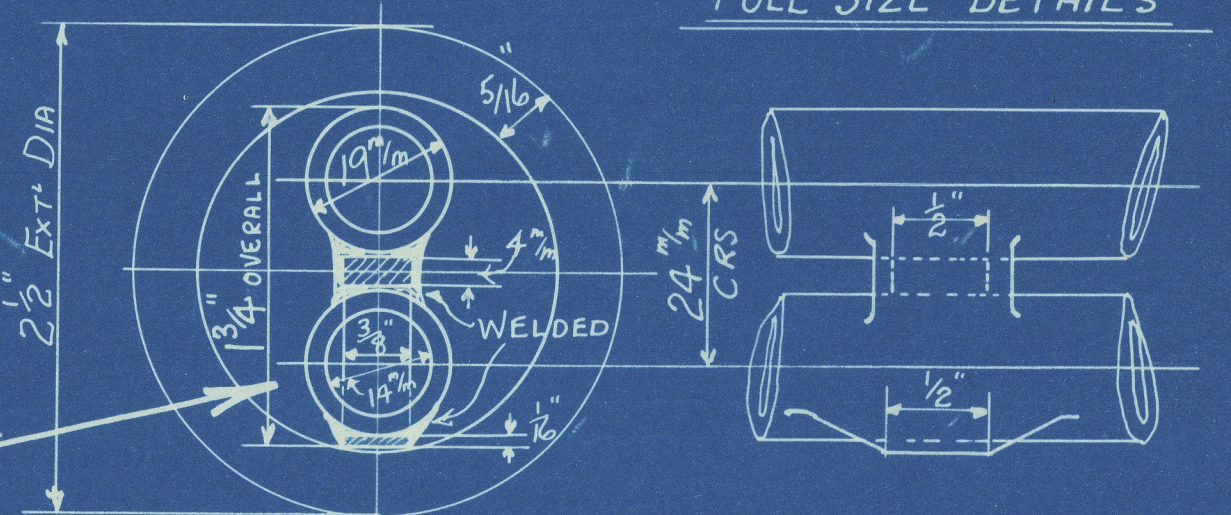
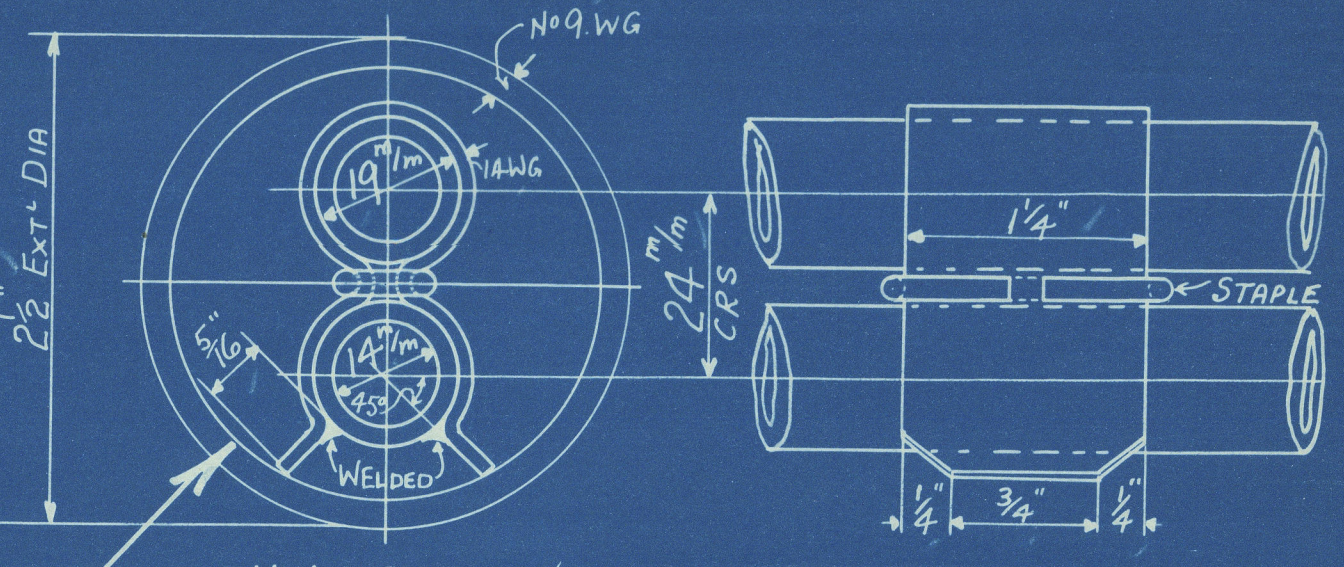


SPECIAL CARE TO BE TAKEN TO ENSURE THAT CLIP SUPPORTS ARE ONLY FITTED ON LIMBS THAT ENTER PLAIN TUBES ONLY

NOTE

CARE TO BE TAKEN THAT WELDED SUPPORT WILL PASS FREELY THROUGH A GAUGE. 1 15/16 INT. DIA.



SEE ARRET DRG NO MN 9880A FOR POSITIONS OF STAY TUBES.

ELEMENT	LENGTHS BEFORE BENDING OR FORGING				NO OFF PER SET	REMARKS	ELEMENT
	U-BENDS	PIPE 1	PIPE 2				
A	17'-6"	—	9'-6 1/4"	10'-11 1/2"	8	4-RIGHT HAND & 4-LEFT HAND	A
B	—	18'-2"	—	10'-11"	16	8 " " & 8 " "	B
C	—	18'-2"	—	12'-6"	16	8 " " & 8 " "	C
D	17'-6"	—	9'-7 1/2"	10'-11 1/2"	8	4 " " & 4 " "	D
E	17'-6"	—	9'-6 1/2"	10'-4 1/2"	2	1 " " & 1 " "	E
F	—	18'-2"	—	11'-11"	2	1 " " & 1 " "	F
H	17'-6"	—	9'-6 1/4"	10'-4 1/2"	8	4 " " & 4 " "	H
J	17'-6"	—	9'-7 1/2"	10'-4 1/2"	8	4 " " & 4 " "	J
K	17'-6"	—	9'-7 1/2"	10'-5 1/2"	2	1 " " & 1 " "	K
L	—	17'-1"	9'-8"	10'-5 1/2"	2	1 " " & 1 " "	L

THE SUPERHEATER CO LTD  
BUSH HOUSE LONDON W.C.2

**TITLE ELEMENTS**

ORDER NO'S REF CHD DRAWING NOS  
6355M 6355M 14/1/34 MB 9280

SWAN HUNTER & WIGHAM RICHARDSON LTD

**JOB NO 109**

**S.S. "HOPE TOR"**

SCALE  
3" = ONE FOOT  
DWG NO TO 13/11/34



Susan Hunter, Wigham  
Richardson  
Superheater elements for  
S. S. "Hope Tor."

SS "HOPETOR"

NEWCASTLE ON TYNE.

Report No. 92498

W/117-0056



© 2021

Lloyd's Register  
Foundation