

LEFT HAND HEADERS DRAWN

DRILLING FOR CENTRE-BOX ELEMENTS
LEFT HAND HEADERS - ONLY.

HEADER "NECK" TO BE TURNED
CONCENTRIC WITH BODY.

PIPE FLANGE(S) TO BE BOLTED TO HEADER(S)
WHEN BEING DESPATCHED
1/32 JOINT RING TO BE PLACED IN HEADER FLANGE GROOVE

NOTE DEPTH OF TAPPED HOLES IN HEADERS
GIVEN TO POINT OF DRILL

DRILLING FOR WING-BOX ELEMENTS
R & L.H. HEADERS

19/11/1934
COPPER ASBESTOS
JOINT RING
1/16 THICK

DETAIL OF SUPERHEATER ELEMENT JOINT
FULL SIZE

DRILLING FOR CENTRE-BOX
RIGHT HAND HEADERS - ONLY.

NOTE

VIEW SHOWING LOWEST ELEMENT HOLES
WING BOX ELEMENTS
RIGHT HAND HEADERS ONLY.

SCALE: 1/2" = ONE FOOT

LIST OF MATERIAL FOR ONE BOILER

MARK	DESCRIPTION	NO OF	MATERIAL	REMARKS
A	HEADERS	4	STEEL FORGINGS	1 PR RH & 1 PR LH
B	" " FLANGES	4	M.S.	7 5/8" SQ x 1 1/2" THICK
C	STRAPS	8	STEEL	DRG NO MM 197
D	BASE PLATES	4	M.S.	" " MM 203
E	ANGLE SUPPORTS	2	M.S.	3 x 2 1/2 x 1/2 x 2 1/4" LONG
E1	" " "	2	M.S.	" " x 1 1/2" "
G	3/4" WHIT STUDS	32	M.S.	DRG NO MD 217
H	5/8" " BOLTS	24	M.S.	" " MD 290
J	3/4" " NUTS	32	STEEL	" " ME 62
K	3/8" COLLAR STUDS	72	M.S.	" " MD 280A
L	3/8" WHIT NUTS	72	STEEL	" " ME 65
M	3 3/4" DOGS	72	DRG FORGINGS	" " M.C. 1070
O	JOINT RINGS	144	COPPER/ASBESTOS	" " MG 370
R	PIPE FLANGES	4	M.S.	7 5/8" SQ x 1 1/2" THICK

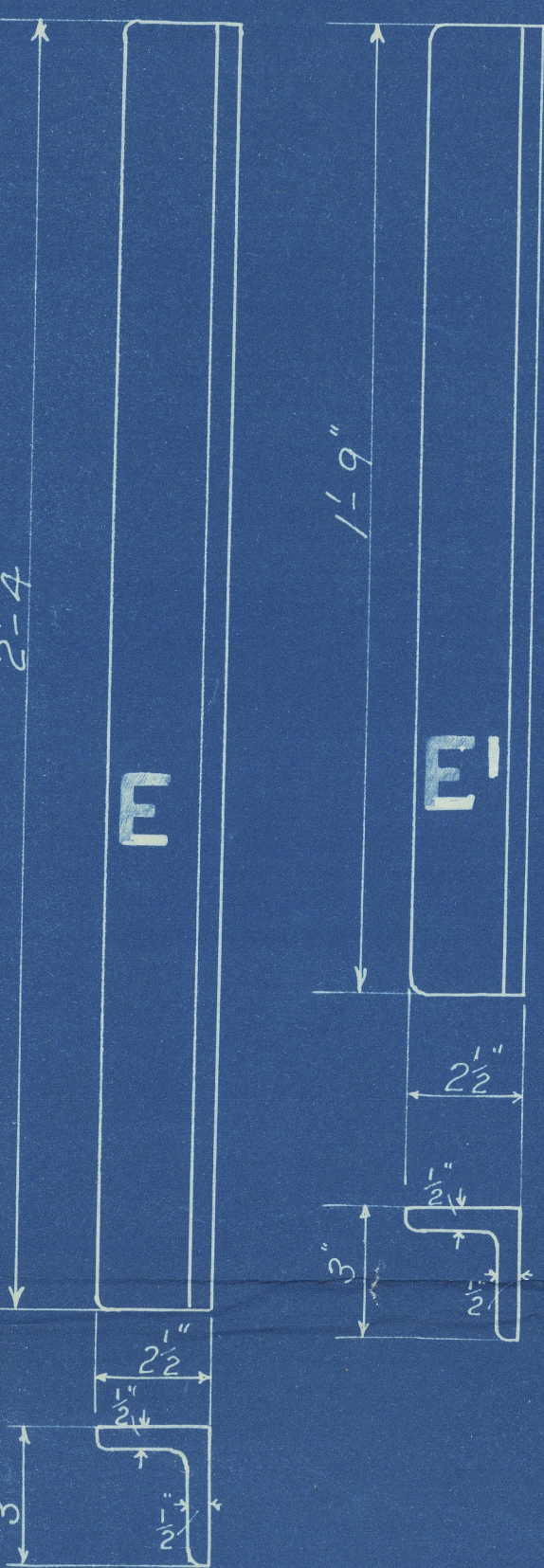
THE SUPERHEATER CO LTD
BUSH HOUSE LONDON W.C.2
TITLE HEADERS

ORDER NO'S REF. CND DRAWING NOS
6355M 6355 9/1/34 MAG920

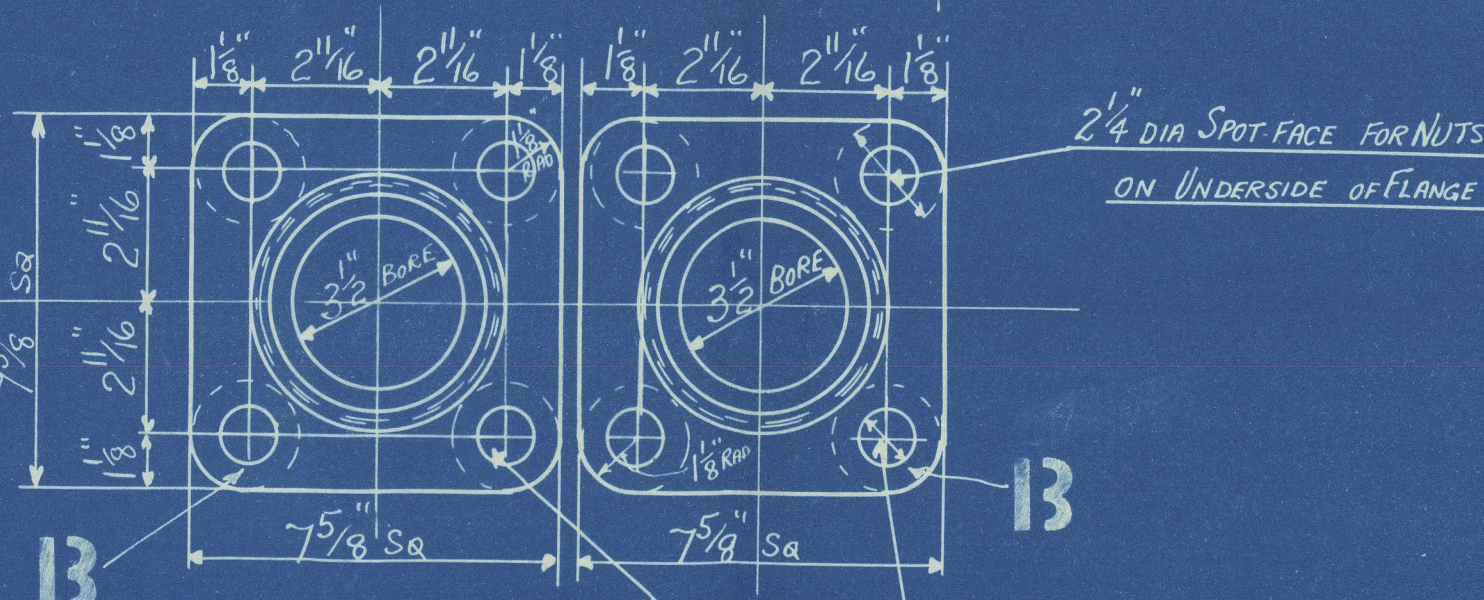
SWAN HUNTER & WIGHAM RICHARDSON LTD

JOE NO 109

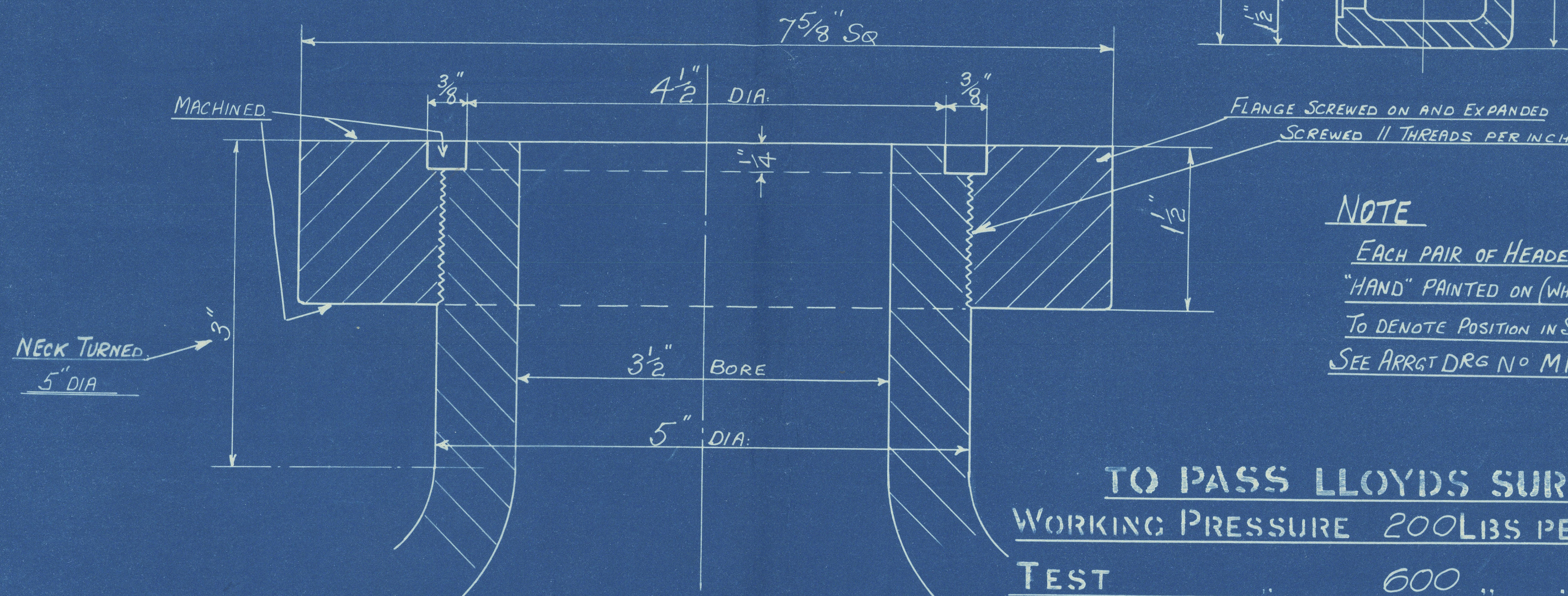
S.S. "HOPE TOR"



DETAILS OF ANGLES.



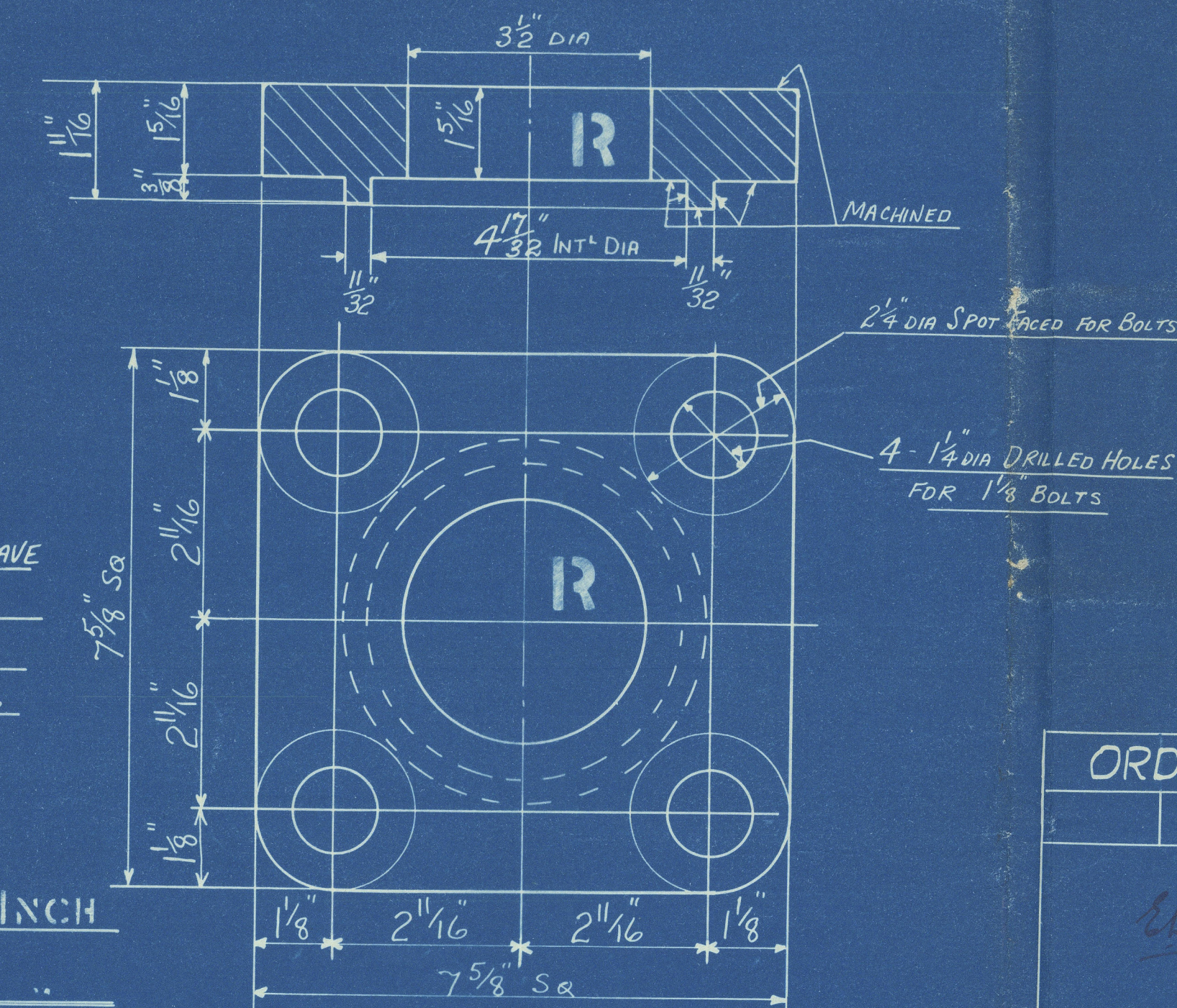
4 - 1 1/4" DIA DRILLED HOLES
FOR 1 1/8" BOLTS.



NECK TURNED
5" DIA

TO PASS LLOYDS SURVEY
WORKING PRESSURE 200 LBS PER SQ. INCH
TEST 600

DETAILS OF HEADER FLANGE 13
FULL SIZE



DETAILS OF PIPE FLANGE

SCALE: HALF SIZE

SCALE
3" = ONE FOOT
AND AS MARKED
DWG. T.C.D.
9/11/34

—
"Hopetor"

S H. W R' Son

Superheat

— (Hunders)

ss "HOPETOR"

NEWCASTLE ON TYNE.

Report No. 92498.

W 117-0055



© 2021

Lloyd's Register
Foundation