

T.S.S. No 518. Messrs J. Brown & Co. Ltd.

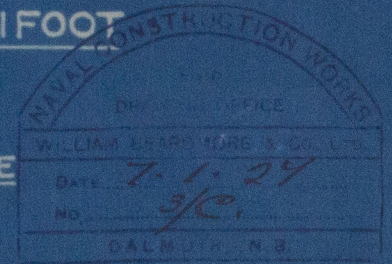
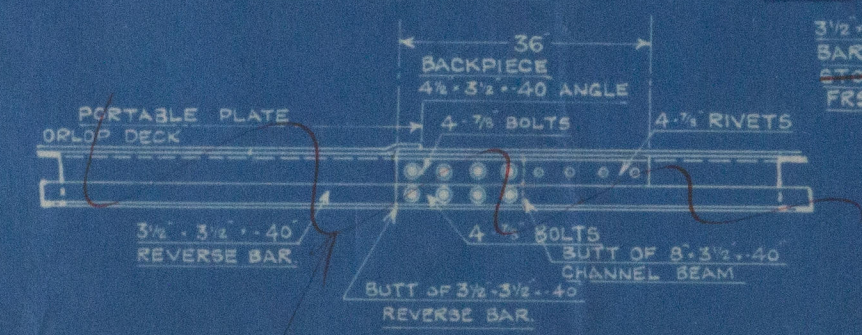
T.S.S. No 648. Messrs W. Beardmore & Co. Ltd.

FLY TO SHAFT TUNNEL AND ORLOP DECK SHEWING  
PROPOSED MODIFICATION TO SCANTLINGS OF BEAMS  
SCALES - ARRANGEMENT -  $\frac{1}{8}$ " = 1 FOOT

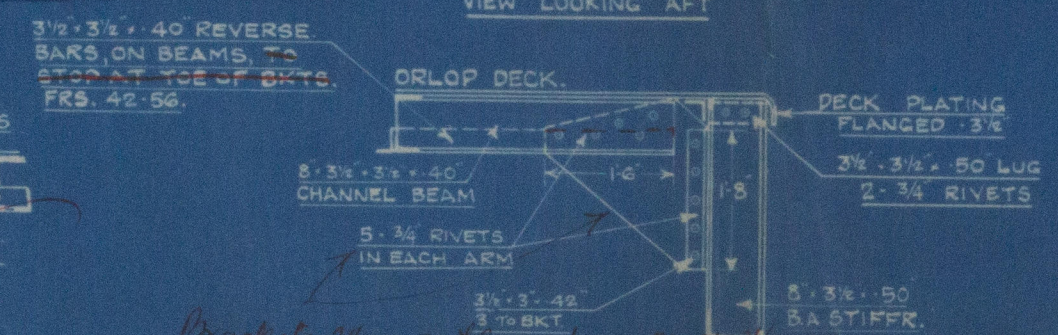
DETAILS -  $\frac{1}{2}$ " = 1 FOOT

APPROVED  
LLOYD'S REGISTER OF SHIPPING  
*Montgomery per B.P.H.*  
13.1.27

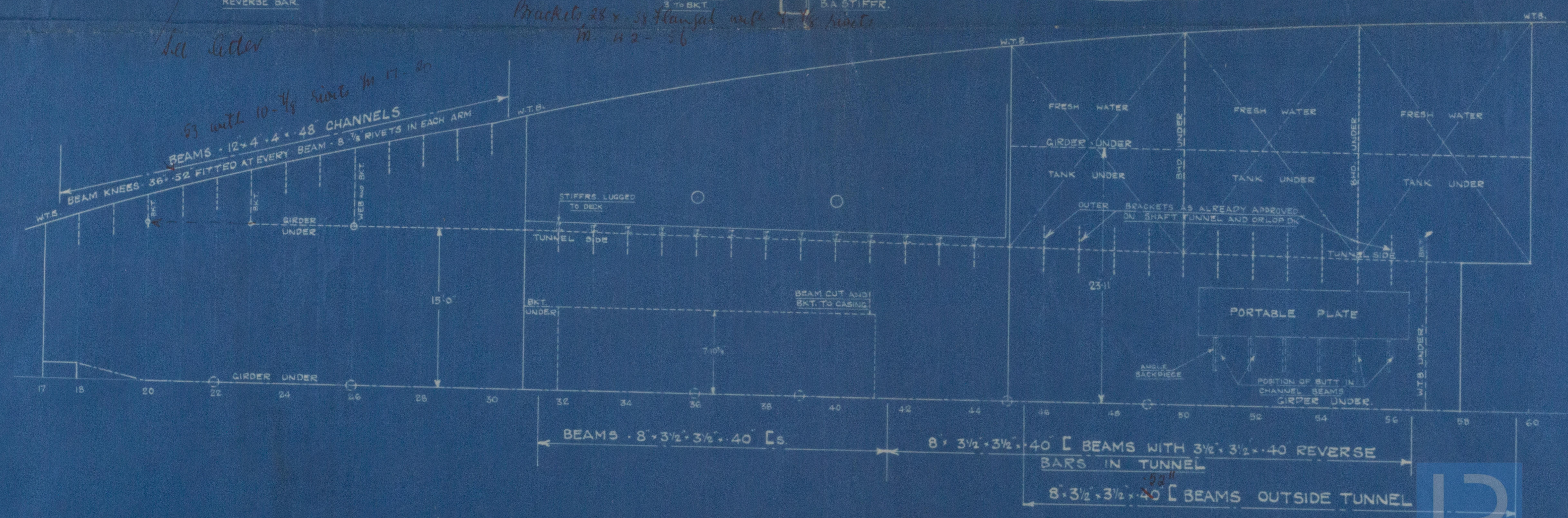
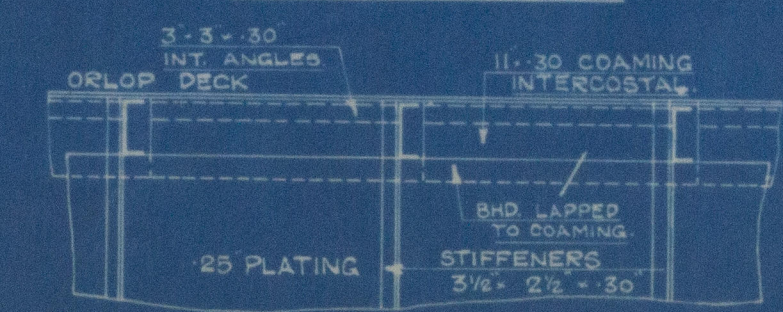
DETAIL OF REINFORCED BEAMS WHERE  
CUT IN WAY OF PORTABLE PLATE  
VIEW LOOKING FORD.



DETAIL AT TUNNEL SIDE SHEWING  
BRACKET CONNECTION TO BEAM  
VIEW LOOKING AFT



DETAIL IN WAY OF CASING 7'10 1/2" FROM C.L.  
VIEW LOOKING OUTBOARD



Lloyd's Register  
Foundation  
10020  
10020  
10020



Wm Beardmore & Co Ltd.

648.

Fly to Shaft Tunnel & Orlop Deck

Mrs. Duchess of Atholl.

GLASGOW REPORT No 48094

W1168-0316



© 2020

Lloyd's Register  
Foundation