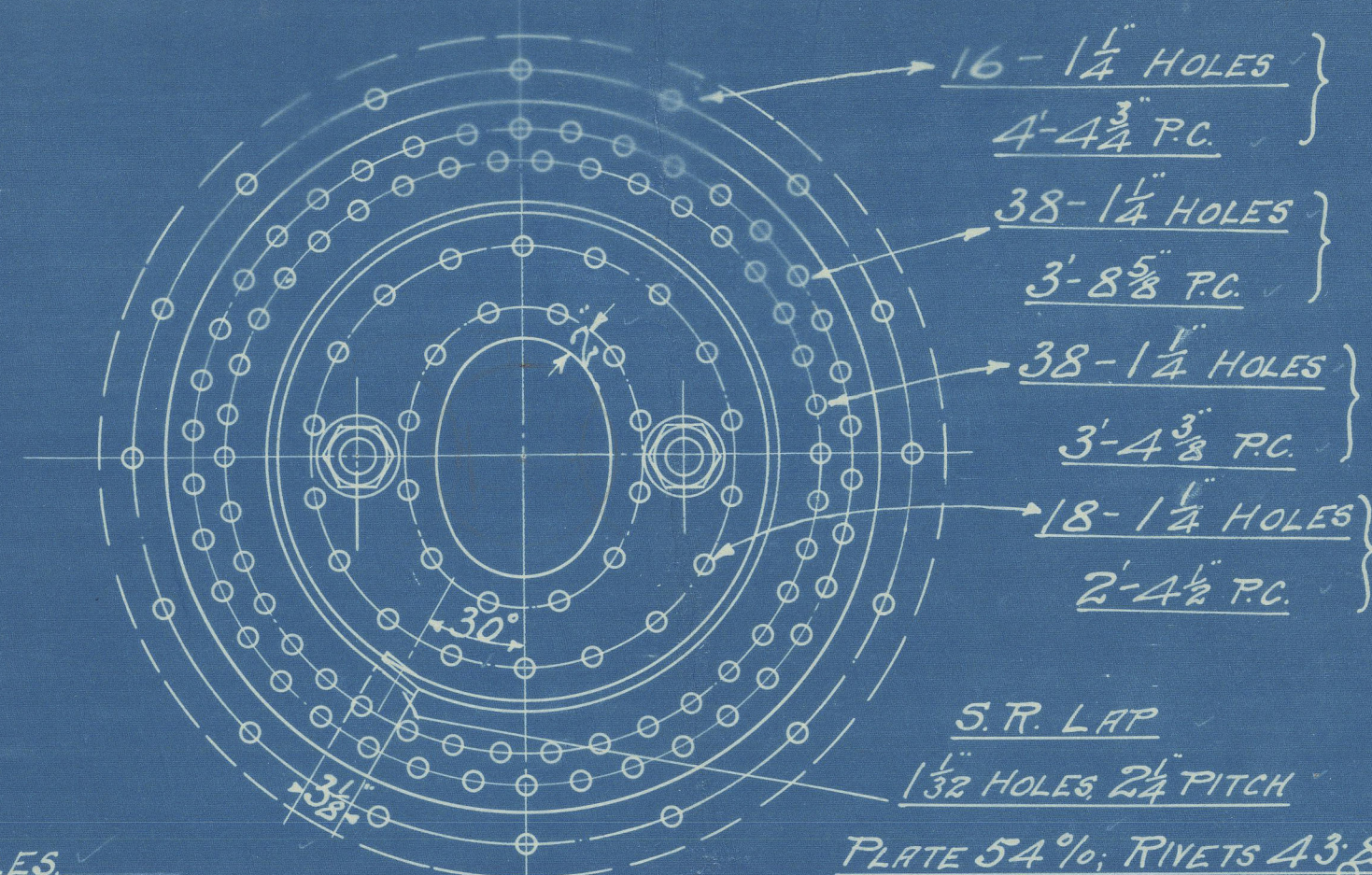


DIMENSIONS.

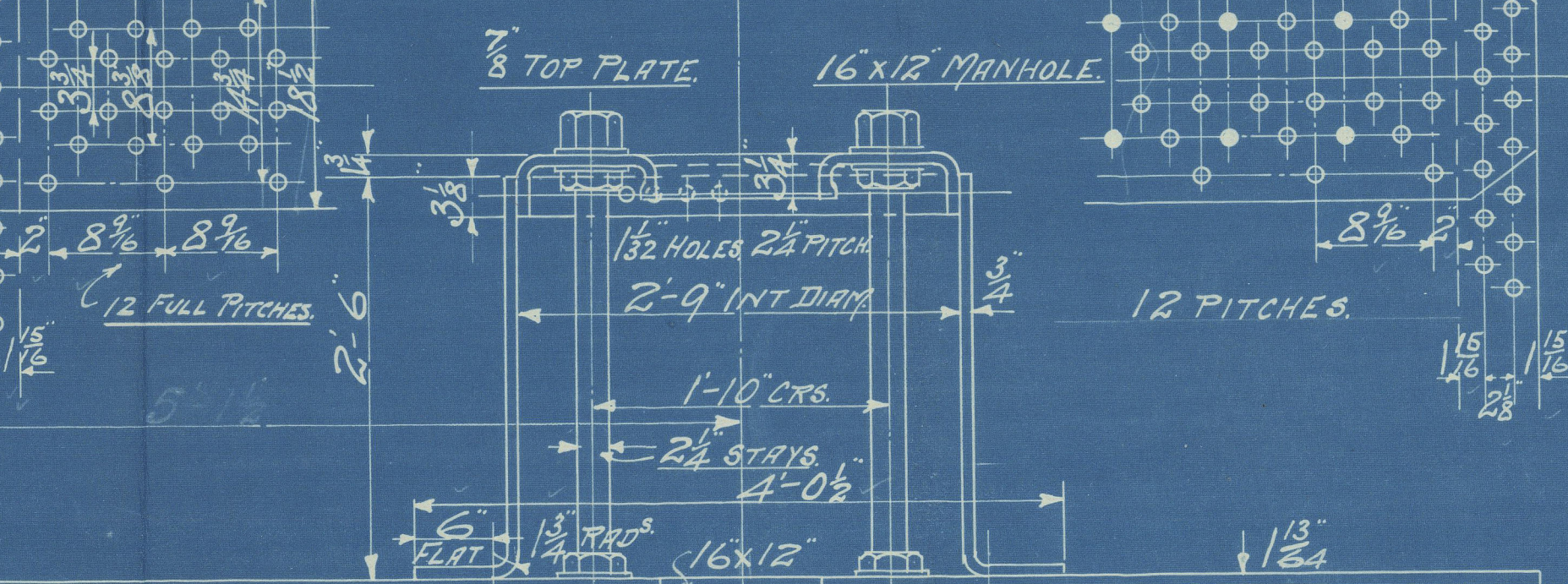
TOTAL HEATING SURFACE	1606 #
SURFACE OF TUBES	1265 #
AREA OF FIRE GRATE	
LENGTH OF FIRE BARS	
NO OF TUBES	204
DIAM. OF TUBES OUTSIDE	3 1/2" O.D.
LENGTH OF TUBES	OVER PLATES 6'-11"
WORKING PRESSURE	200 lbs/sq
DIAM. OF SAFETY VALVE	DOUBLE 2 1/2" COAL FIRED NAT. DISCHARGE.



OUTER STRAP 1/8\"/>

PERCENTAGE OF JOINT
PLATE 85.7% RIVETS 88.3%
COMBINED 88.46%

DOUBLE PLATE GIRDER STAYS
OF STEEL 1/2\"/>



STEEL STAYS 3\"/>

SHELL- 29-33 TONS TENSILE.

6'-11\"/>

147 PLAIN TUBES 3 1/2\"/>

SWELLED 1/8\"/>

57 STAY TUBES 3 1/2\"/>

SCREWED AT ENDS TO 3 1/2\"/>

TUBES TO BE BEADED AT BACK END.

LONGITUDINAL JOINT WELDED.

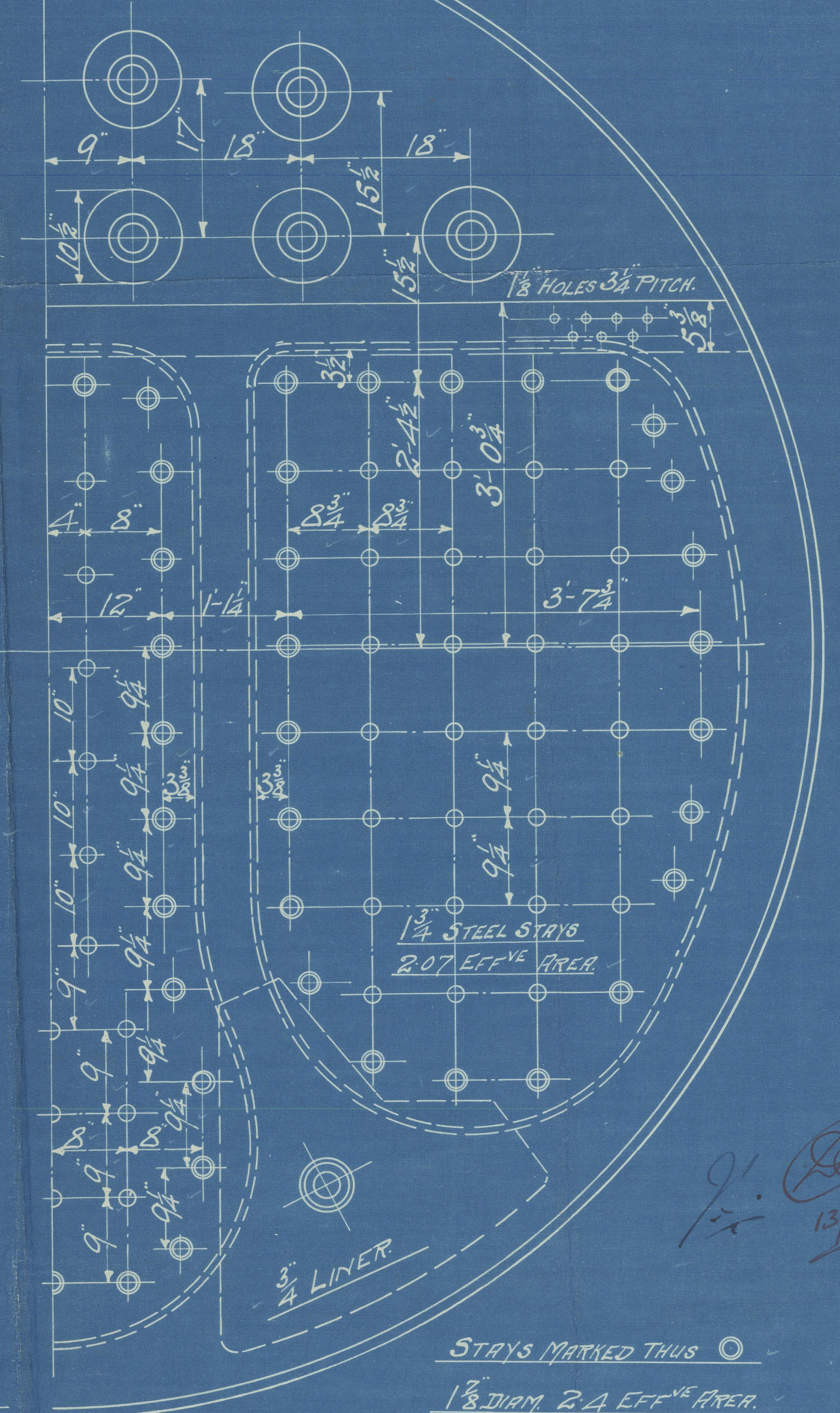
2 1/2\"/>

10'-6\"/>

SHELL STRAPS AND COMPENSATING PLATE- 29-33 TONS TENSILE.
GIRDERS- 28-32 \"/>

LONGITUDINAL STAYS 28 TONS. SCREW STAYS 26 TONS TENSILE.
RIVETS- 23 TONS SHEAR.

LONG STAYS OF STEEL, SCREWED 8 THDS/INCH
SCREW STAYS OF STEEL, \" 10 THDS/INCH
STAY TUBES OF LAP WELDED IRON, \" 9 THDS/INCH
PLAIN TUBES \" \"



CHARLES D. HOLMES & CO LTD
ENGINEERS & BOILER MAKERS
HULL 2-12-29.

PLAN N° 7897

STEEL BOILER N° 1392

DRAWER N° 112
DRAWING N° 9/12/29
HULL 2-12-29.

H. Jones Boiler No. 1392.

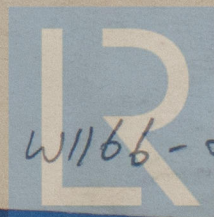
U.S. "Adventure"

FULL REPORT NO. 40707

Enclosure

RETAIN

RETAIN



© 2021

W1166-0073

Lloyd's Register
Foundation