

SURFACES	ONE BOILER	3 BOILERS
TUBES	1843	5529
FIREBOX TOP AND SIDES	135	405
" BACK	70	210
TUBEPLATE	45	135
FURNACES	152	456
TOTAL HEATING SURFACE	2245	6735
GRATE AREA (5" 6" BARS)	59	177
TUBE AREA	9.02	27.06
WATER	14.6	438
STEAM SPACE	4.18	1254
GRATE AREA : HEATING SURFACE	1 : 38.1	
" : TUBE	1 : 31.3	
" : AREA	6.55 : 1	
" : WATER	1 : 2.48	
" : STEAM SPACE	1 : 7.1	
% BOILER ABOVE FIREBOX	31	
WEIGHT OF WATER	24 TONS	72 TONS

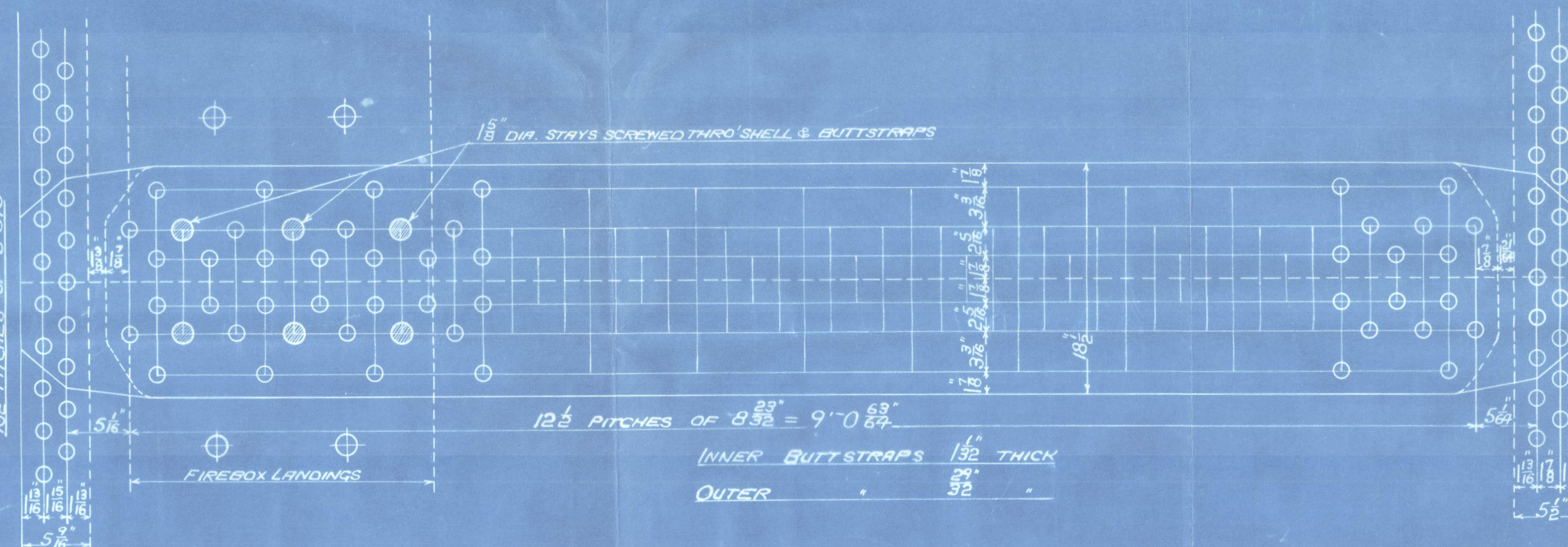
RIVETING	RIVET HOLE DIA		
	LONG	BACK END CIRC	FRONT END CIRC
PITCH	14	18	18
% PLATE	85.6	64.8	63
% RIVET	71	45.4	47.7

LIMITS OF TENSILE STRENGTH & MATERIAL

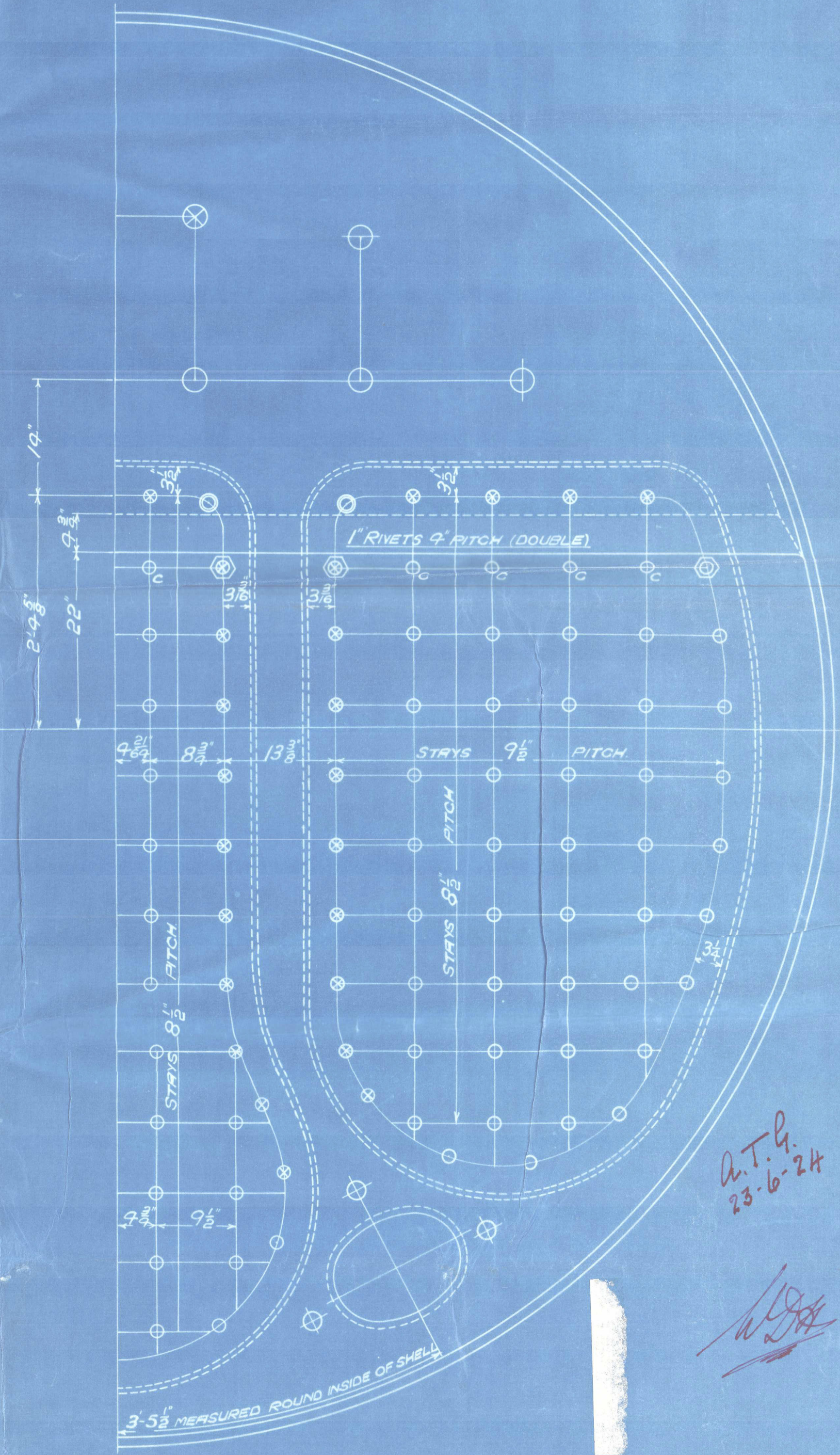
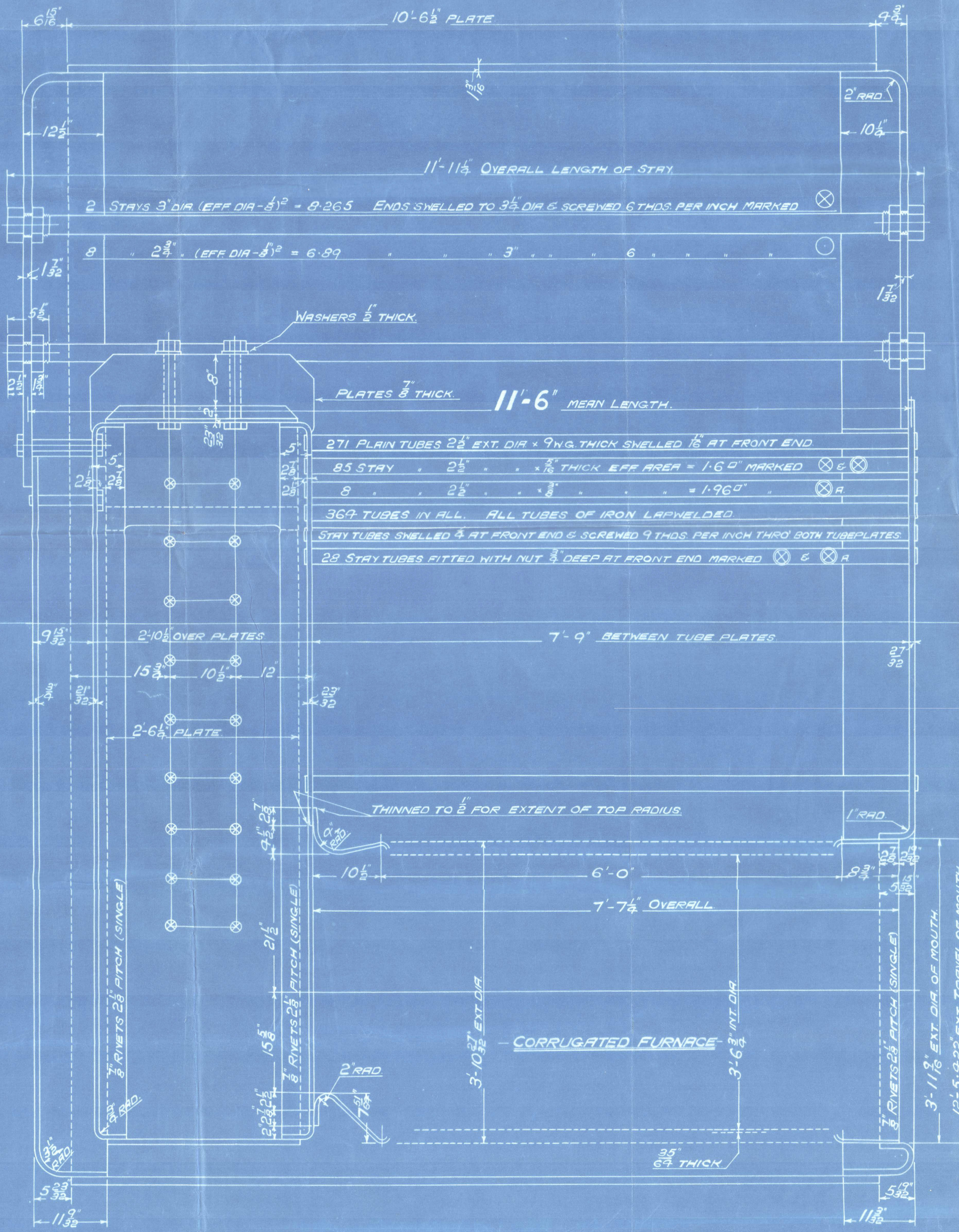
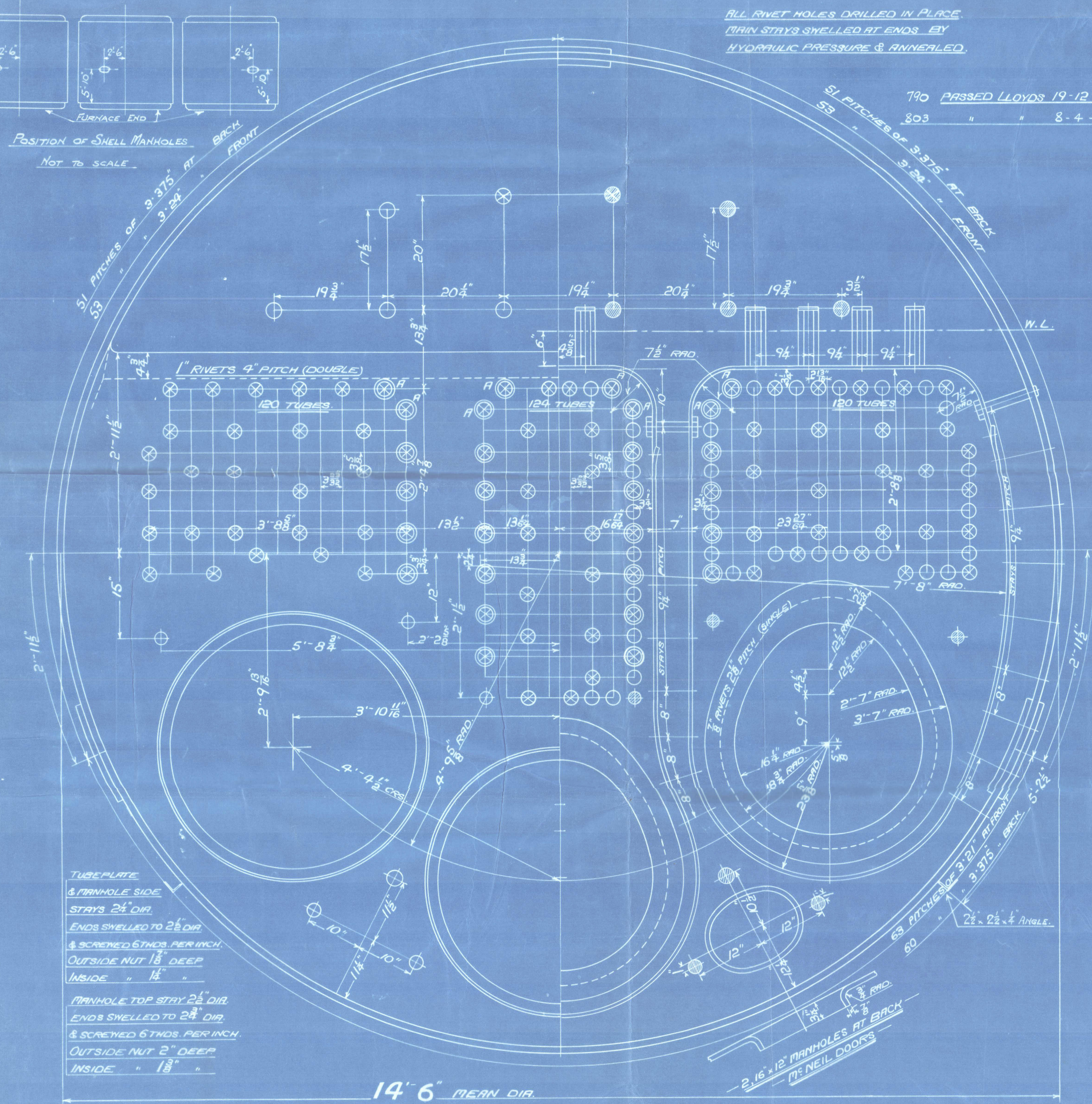
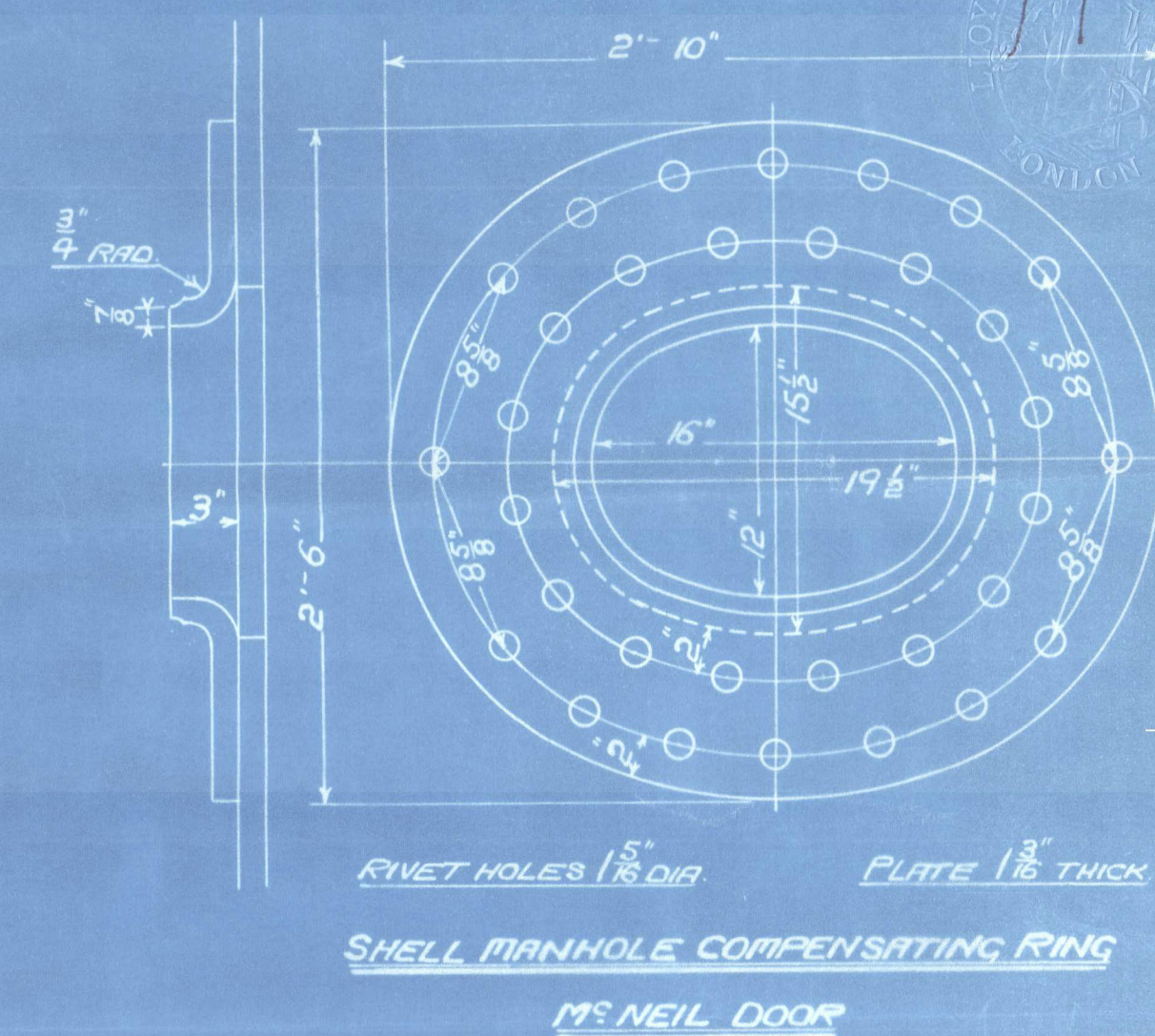
SHELL BUTTSTRAPS AND GIRDERS	28 TO 32 TONS
OTHER PLATES	26 " 30 "
FURNACES	26 " 30 "
MAIN STAYS	28 " 32 "
SCREWED STAYS	26 " 30 "
RIVET BARS	26 " 30 "

ALL RIVET HOLES DRILLED IN PLACE.
MAIN STAYS SHELLS AT ENDS BY
HYDRAULIC PRESSURE & ANNEALED.

BACK END CIRCUMFERENCE
162 PITCHES OF 3.375"



FRONT END CIRCUMFERENCE
162 PITCHES OF 3.375" AND 63 PITCHES OF 3.21"



MAIN BOILER
— 3 OFF — EACH CONT. NO.
CONT. NO. 700 805-810.
WORKING PRESSURE 180 LBS. PER SQ. INCH
TEST — 320 —
— TO PASS LLOYD'S SURVEY —
— SCALES :- 1" & 1/2" = ONE FOOT —

POSITION	MARK	DIA.	(DIA. - 267)	SCREWED THROUS/INCH
BACK	⊙	1 1/8"	1.894	10
TOP SIDES, BACK WIDE SPACE & TOP ROW	⊙	1 3/8"	2.199	10
BACK TOP CORNER	⊙	2"	3.003	10

ALL FIREBOX STAYS SCREWED THRO' BOTH PLATES AND NUT FITTED AT EACH END EXCEPT STAYS FROM WING FIRE BOX TO SHELL AND STAYS MARKED 'C' IN BACK BOTTOM END WHICH PROJECT 8" AND ARE CRANKED. ALL 1 1/8" & 1 3/8" NUTS 8" DEEP EXCEPT ON GIRDER TOPS WHERE THE OUTSIDE NUTS ARE 1 1/2" DEEP. ALL 2" NUTS 1" DEEP.



Dr. Rowan & Co. Ltd.

Cont. N° 810

3 S. E. Balers

WP 180 lbs./sq.

N° 16912
LLOYD'S TEST
320 LBS
WP-180 LBS
L.C.D. 20-8-25

also

GLASGOW REPORT No 45047

Gnrk 18458.

W116S - 0029



© 2020

Lloyd's Register
Foundation