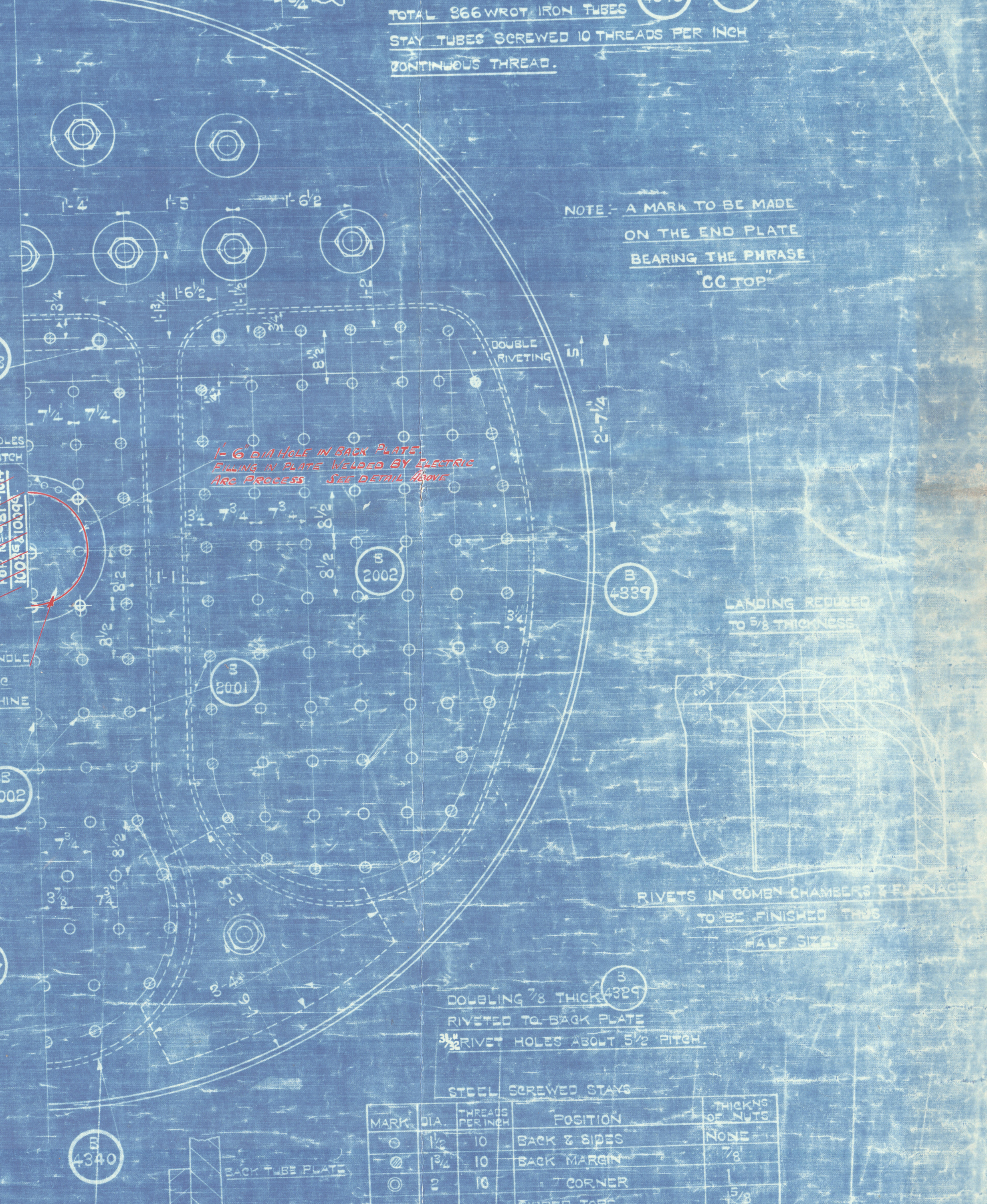
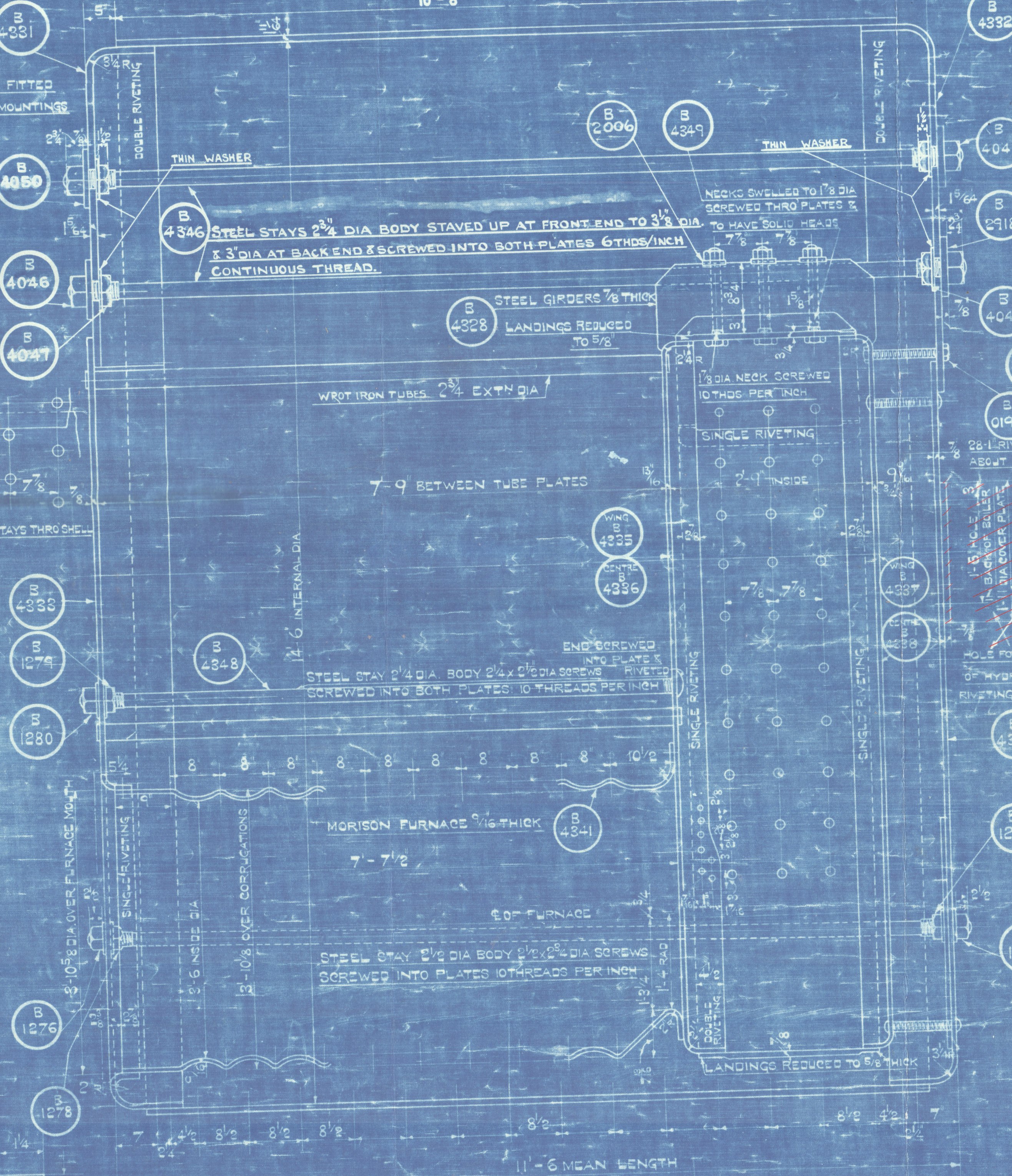
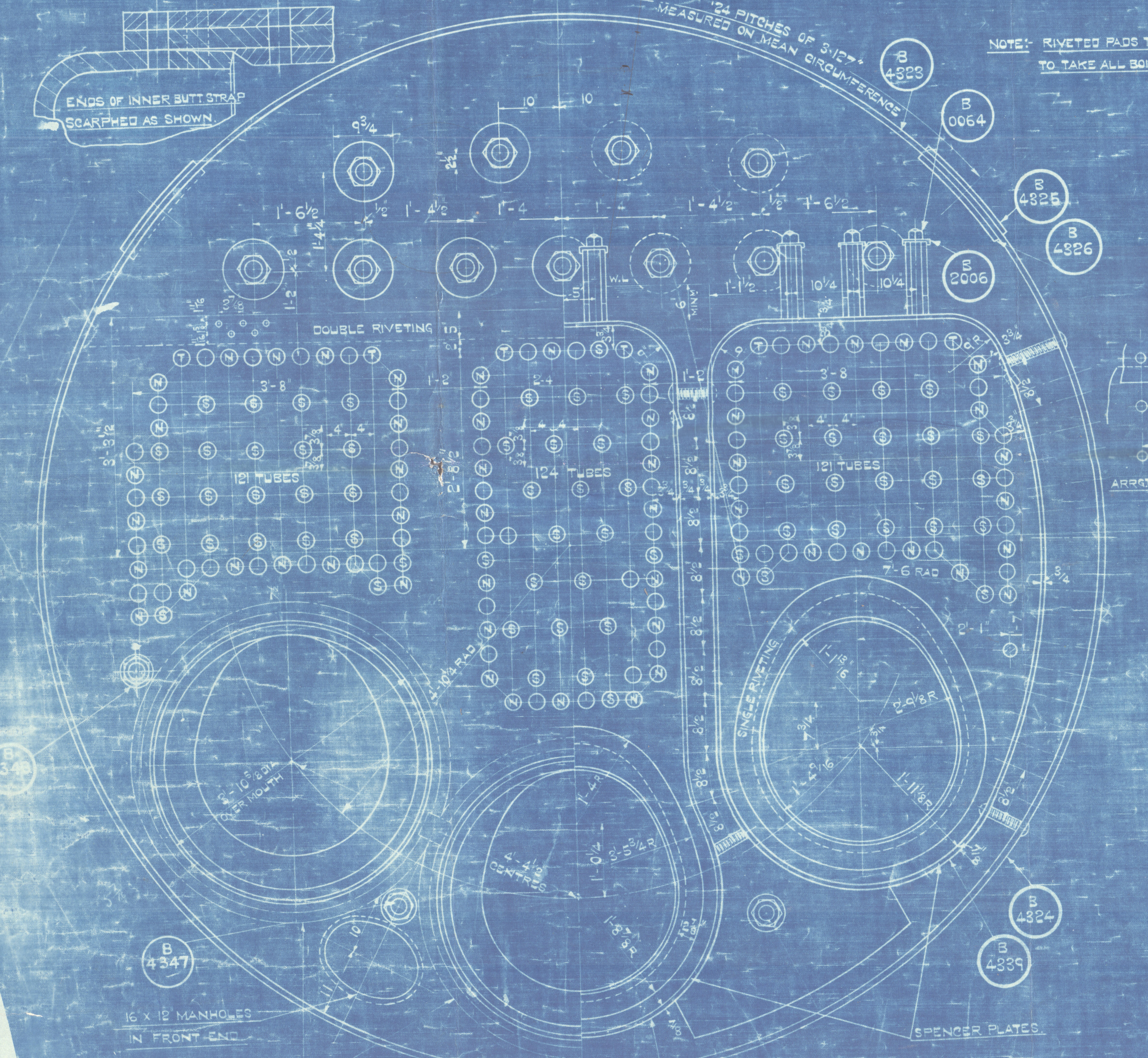
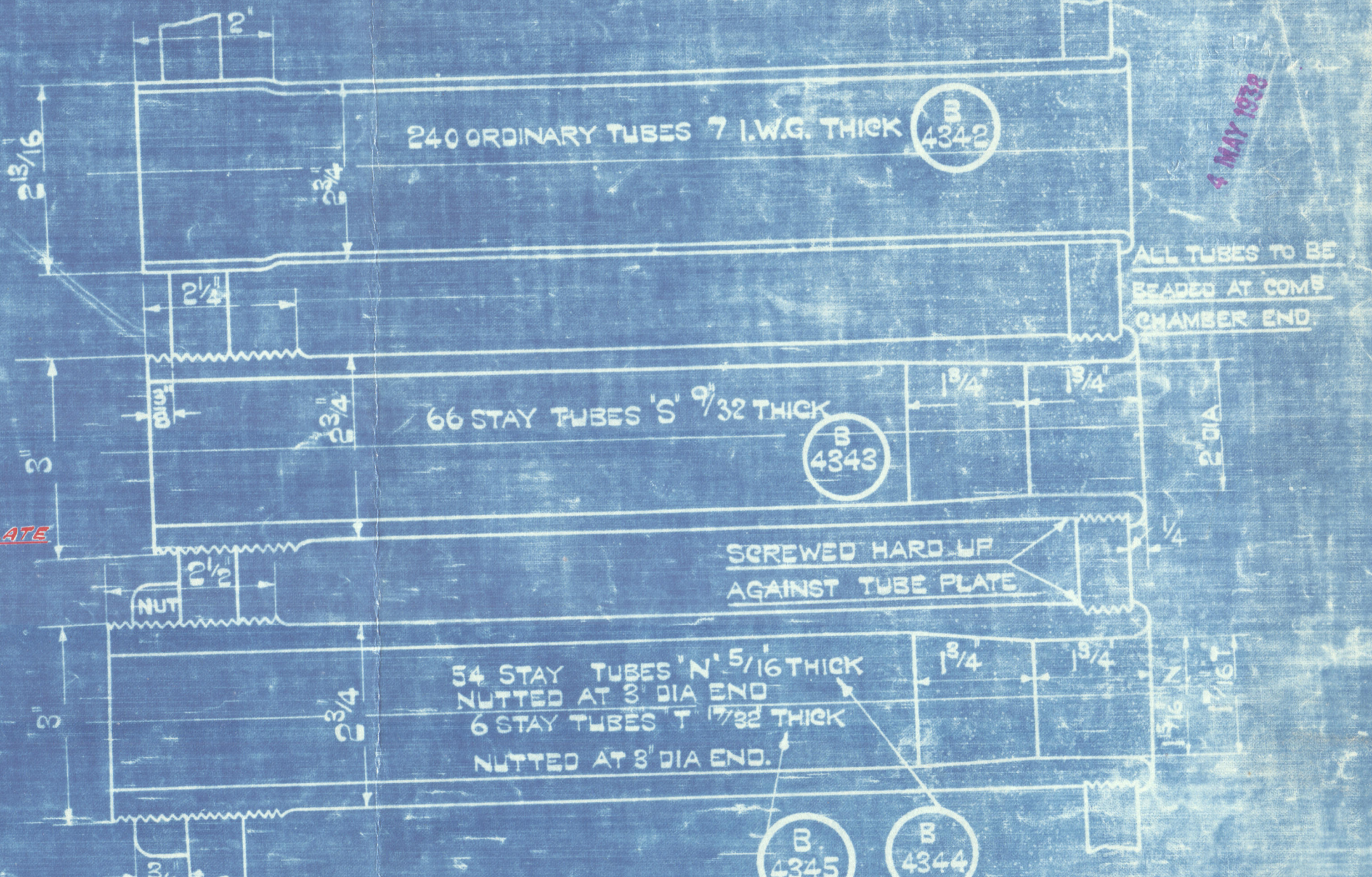
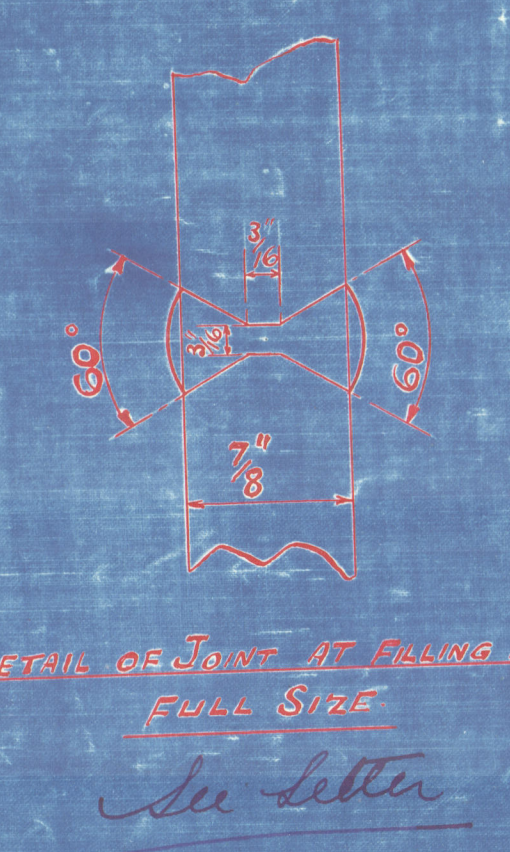


HEATING SURFACE ETC	18000
TUBES	2040
FURNACES	170
COMBUSTION CHAMBERS	268
FRONT TUBE PLATES	32
TOTAL	2505
STEAM SPACE	372
COMBUSTION SPACE	489
AREA THROUGH TUBES	10



NOTE: BEFORE ANNEALING BOILER FRONT PLATE AFTER FLANGING, RINGS FOR FURNACE FRONTS MUST BE WELDED IN POSITION. (SEE DRAWING 45842)

PARTICULARS OF RIVETING.

LONGITUDINAL SEAMS DOUBLE BUTT STRAPS RIVETED AS SHOWN.	
STRENGTH OF PLATE 85-67% STRENGTH OF RIVET 87-04%	
CIRCUMFERENTIAL SEAMS DOUBLE RIVETED AS SHOWN.	
WELDED DOUBLE RIVETED 1/2 RIVET HOLES 3/8 PITCH.	
END PLATES	
FURNACES & COMB CHRS	
SINGLE RIVETED 3/8 RIVET HOLES 1/2 PITCH; DOUBLE RIVETED 1/2 RIVET HOLES 3/8 PITCH.	
ALL PLATES & RIVETS STEEL. ALL HOLES DRILLED IN PLACE.	
TENSILE STRENGTH OF SHELL & BUTT STRAPS 25 TONS TO 26 TONS PER SQ INCH.	
GRIDERS	26 30
ENDS, FURNACE & COMB CHRS	26 30
LONGITUDINAL STAYS	26 30
SCREWED STAYS	26 30
RIVET BARS	26 30

WORKING PRESSURE 180 LBS PER SQ INCH
TEST 320
TO LLOYD'S REQUIREMENTS, TESTS & SURVEY
OIL FIRED WITH FORCED DRAUGHT.
1-BOILER REQUIRED FOR EACH SHIP NO.

SECTION 3 SUB-CODE 0392

Nos 9619 & 9629 9015 10085

DONKEY BOILER.

SCALE: 1 1/2" = 1' AS MARKED.

1014

2020

Lloyd's Register Foundation

HARLAND & WOLFF LTD.
BELFAST

No. 1014 ~~A~~

TITLE *Smiley Boilers*

DATE APPROVED *4th May '38*

•CAIRNDALE•

Bel. 12305.

CHAIN



W1161-0195

© 2

Lloyd's Register
Foundation

