

PLAN N^o 41.
~~N^o 1008-1009~~ N^o 1014.

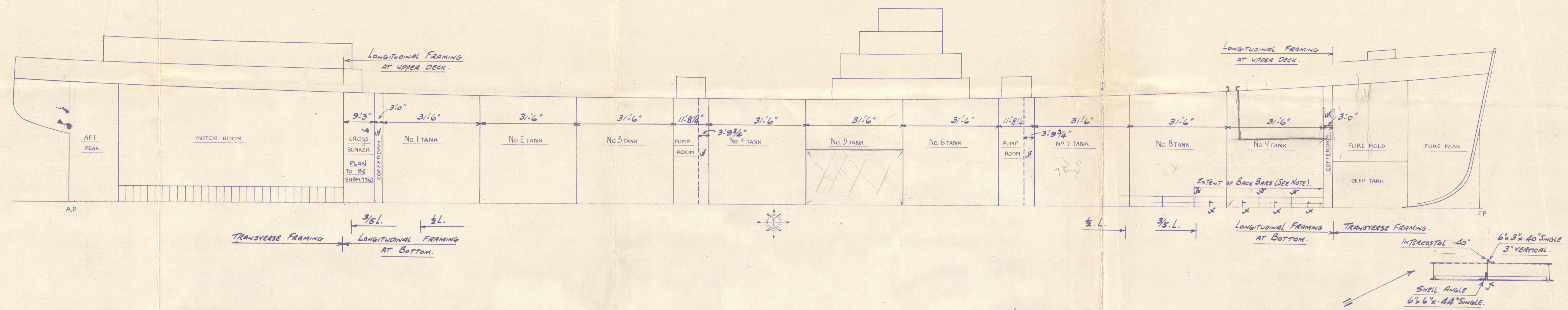
PROFILE AND DECK PLAN
Scale 1/16" = 1 Foot

CONTINUITY OF LONGITUDINAL STRENGTH TO BE MAINTAINED
AT JUNCTION OF LONGITUDINAL AND TRANSVERSE FRAMING.

6" x 3 1/2" x 40" B.A. STIFFENERS
ON SHELL SPACED ABOUT 3'-0"
IN VIEW OF WIDE FRAME SPACING.

ARRANGEMENTS IN WAY OF FORE END
TO BE SUBMITTED.

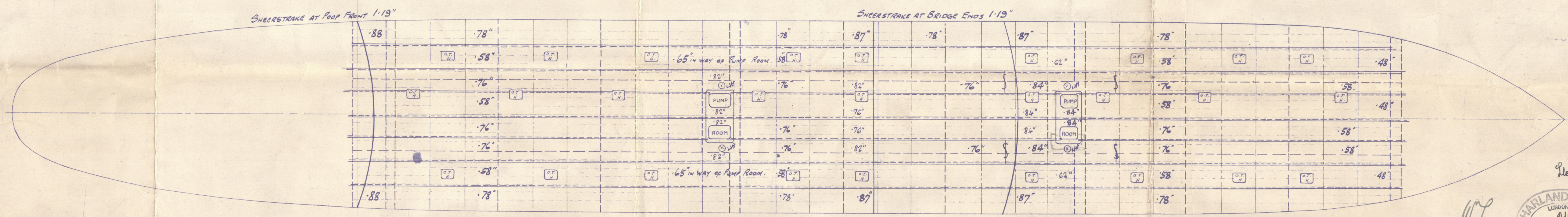
ARRANGEMENTS IN WAY OF AFTER END
TO BE SUBMITTED.



INTERCOSTALS TO BE FITTED TO BOTTOM OF NOS 8 AND 9 TANKS (CENTRE) WHERE MARKED X, BETWEEN THE LONGITUDINALS IN LIEU OF TAPERING THE SPACING OF SAME. BACK BARS TO SHELL 3 1/2" x 3 1/2" x 44" TO BE FITTED ON LONGITUDINALS IN NOS 8 AND 9 TANKS (CENTRE) FOR EXTENT SHOWN. SHELL CONNECTIONS ON TRANSVERSE FLOORS IN NOS 8 AND 9 TANKS (CENTRE) WHERE MARKED D 6 x 6 x 46" DOUBLE. 3 STRIKES OF SHELL PLATING NEXT KEEL INCREASED IN THICKNESS FROM 1/2 L. FORWARD TO RULE POSITION OF COLLISION BULKHEAD. SEE MIDSHIP SECTION.

ARRANGEMENT AT BREAK
INCLUDING DECK THICKNESSES
TO BE SUBMITTED.

CORNERS OF HATCHES TO BE WELL ROUNDED.



DECK THICKNESSES TO BE FURTHER INCREASED
IF ADDITIONAL COMPENSATION NOT FITTED
IN WAY OF VENTS.

66017E and DECK

HARLAND & WOLFF LTD.
BELFAST

No. 1014 "CAIRNDALE"

TITLE Profile & Deck Plan

DATE APPROVED 10/12/37

W S 165

RETAIN



© 2020

Lloyd's Register
Foundation

W1161-519