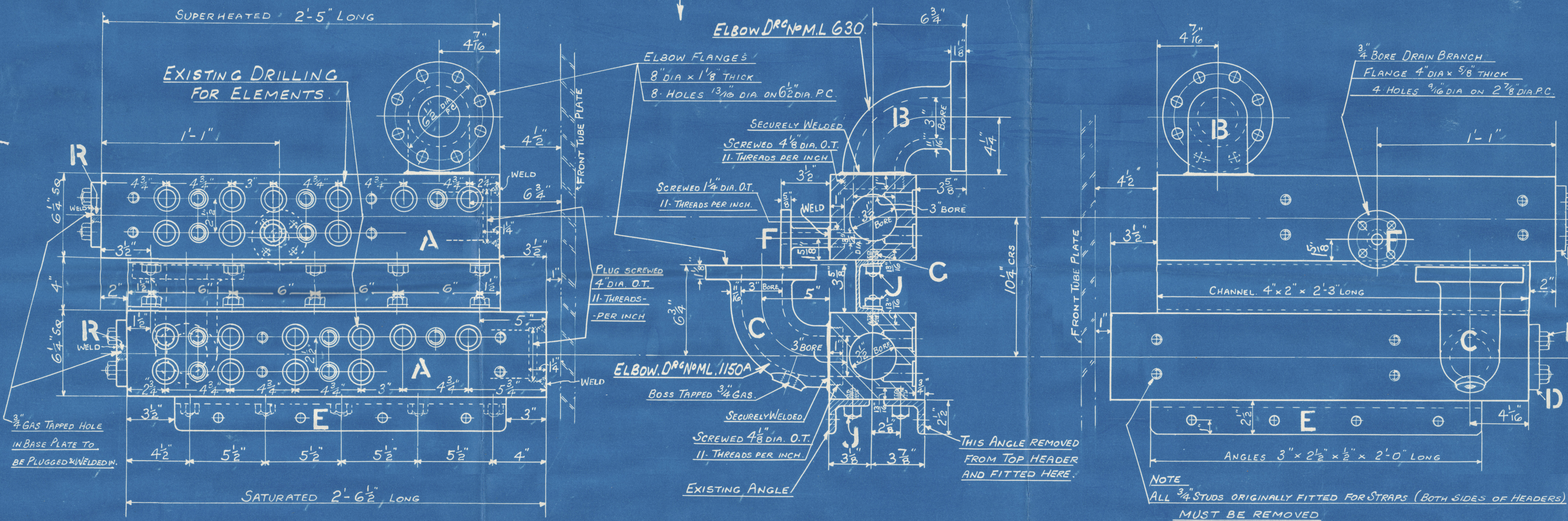
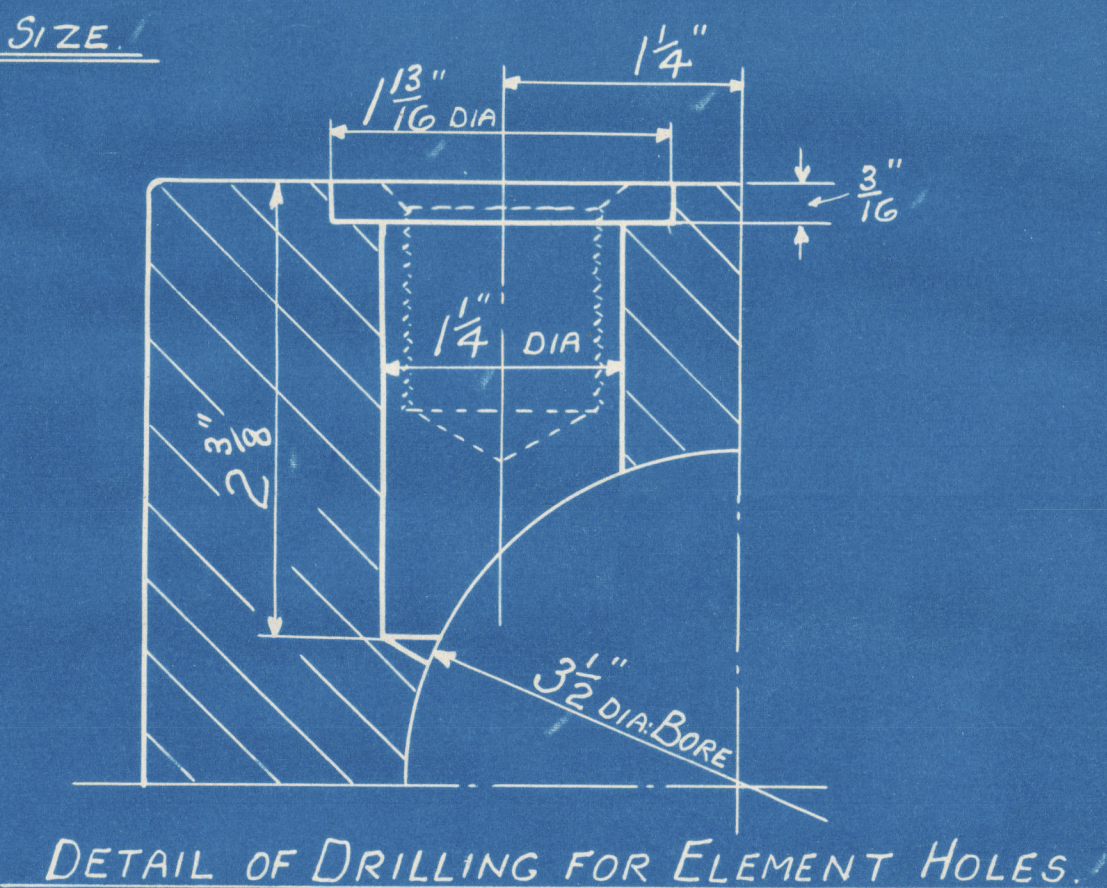
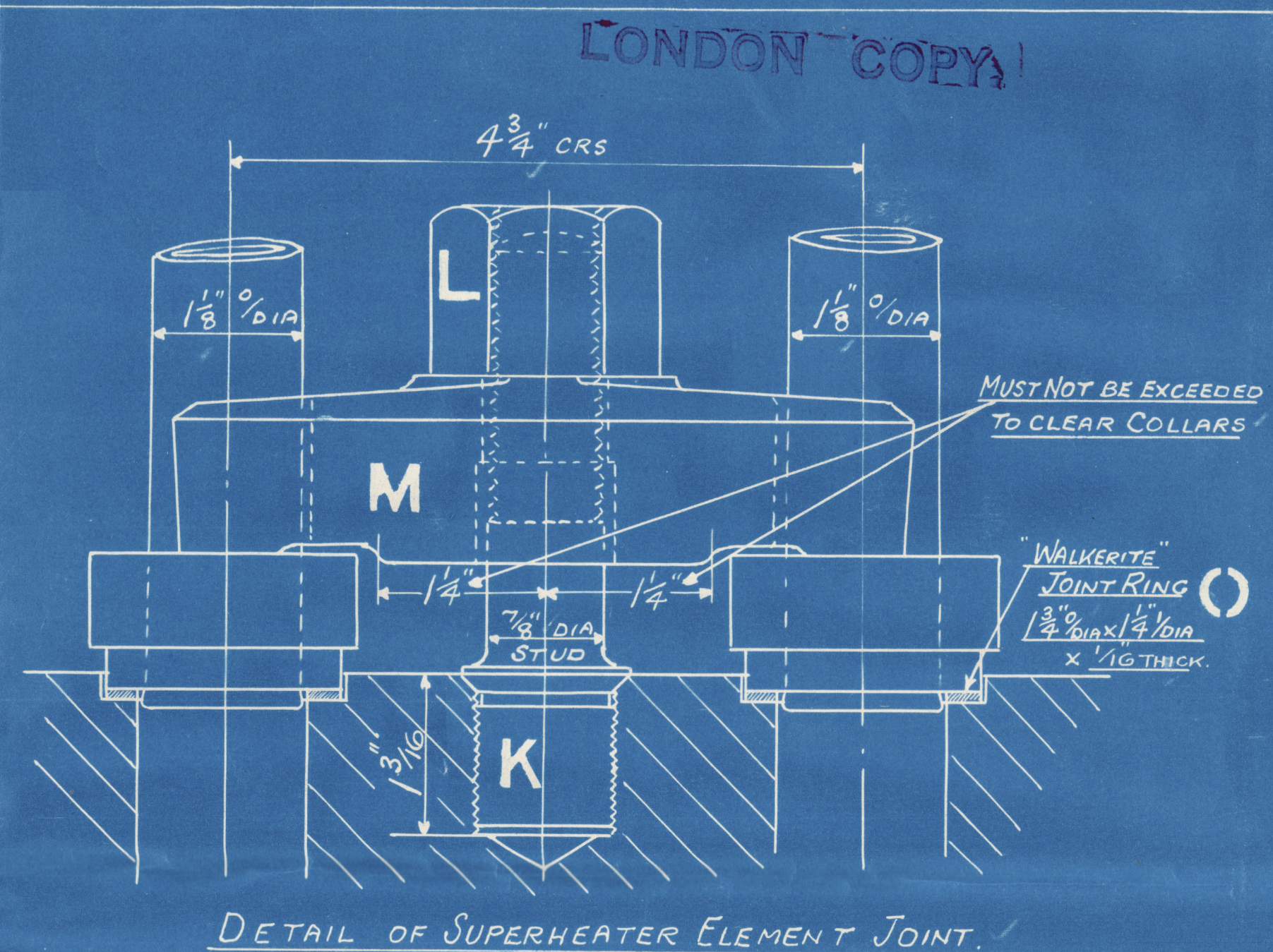
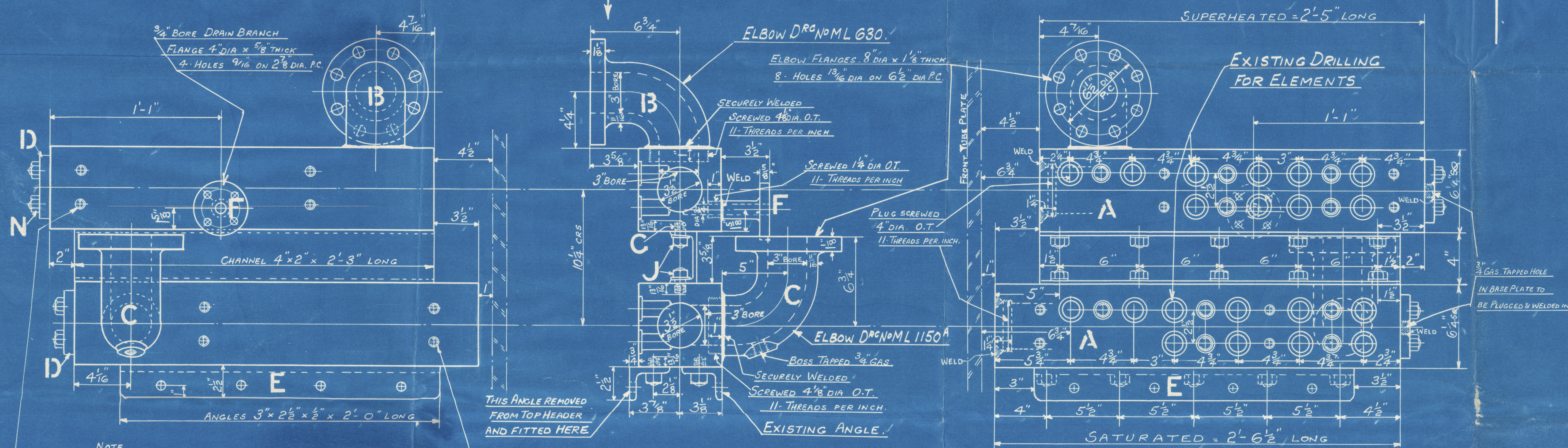


# RIGHT HAND HEADERS



# LEFT HAND HEADERS



## LIST OF MATERIAL FOR ONE BOILER

MARK	DESCRIPTION	NO OF	MATERIAL	REMARKS
A	HEADERS	4	STEEL FORGING	1 PAIR R.H. & 1 PAIR L.H. (EXISTING)
B	ELBOW	2	CAST STEEL	DRG No ML 630
C	"	2	"	ML 1150A
D	BASE PLATES	4	M.S.	" MM150A (EXISTING)
E	ANGLE SUPPORTS	4	"	(EXISTING)
F	3/4" DRAIN BRANCH	2	FORGED STEEL	MADE FROM DRG No S.L. 815 (TYPE)
G	3/4" WHIT STUDS	40	M.S.	DRG No MD217C (EXISTING)
H	3/8" " "	16	M.S.	" MD218C (EXISTING)
J	3/4" " NUTS	40	STEEL	" MEG2A (EXISTING)
K	3/8" COLLAR STUDS	20	M.S.	" MD280A (EXISTING)
L	3/8" WHIT NUTS	20	STEEL	" MEG5B (EXISTING)
M	4 3/4" DOGS	20	DROP FORGING	" MC1330 (EXISTING)
N	5/8" WHIT NUTS	16	STEEL	" MEG1B (EXISTING)
O	JOINT RINGS	40	WALKERITE	" MG390
P	HEADER PLUGS (SCREWED)	4	M.S.	THIS DRAWING
R	3/4" GAS PLUGS	4	M.S.	FOR BASE PLATES (WELDED IN)
	BLANK PLUGS (E.T.)	4	M.S.	DRG No MD1920

## TO PASS LLOYDS SURVEY

WORKING PRESSURE 230 LBS PER SQ. INCH  
TEST 690

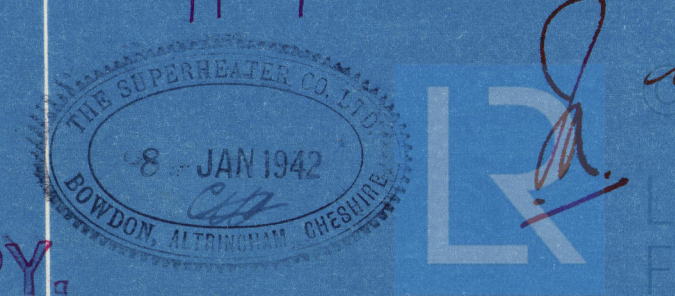
## THE SUPERHEATER CO LTD

## TITLE HEADERS

ORDER NO'S	REF	CHKD	DRAWING NOS
15053 M/REV	15053 M	7-1-42	15053/30

## S.S. "ST MARGARET."

Percept No. 15 Q304



LONDON COPY.

## NOTE

HEADERS ON THIS DRAWING INDICATE THE MODIFICATIONS NECESSARY TO EXISTING HEADERS MADE TO DRG No 9024/20.

EACH PAIR OF HEADERS TO HAVE "HAND" PAINTED ON (WHITE PAINT) TO DENOTE POSITION IN SMOKE BOX

SCALE

3" = ONE FOOT

DWN TCD

Approved 7/1/42