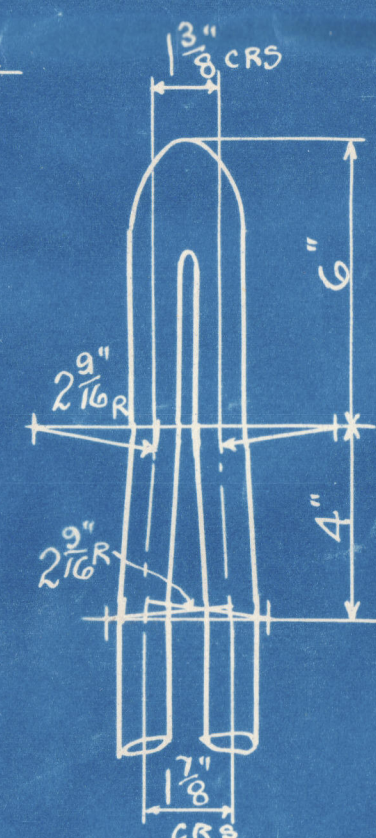
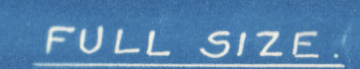
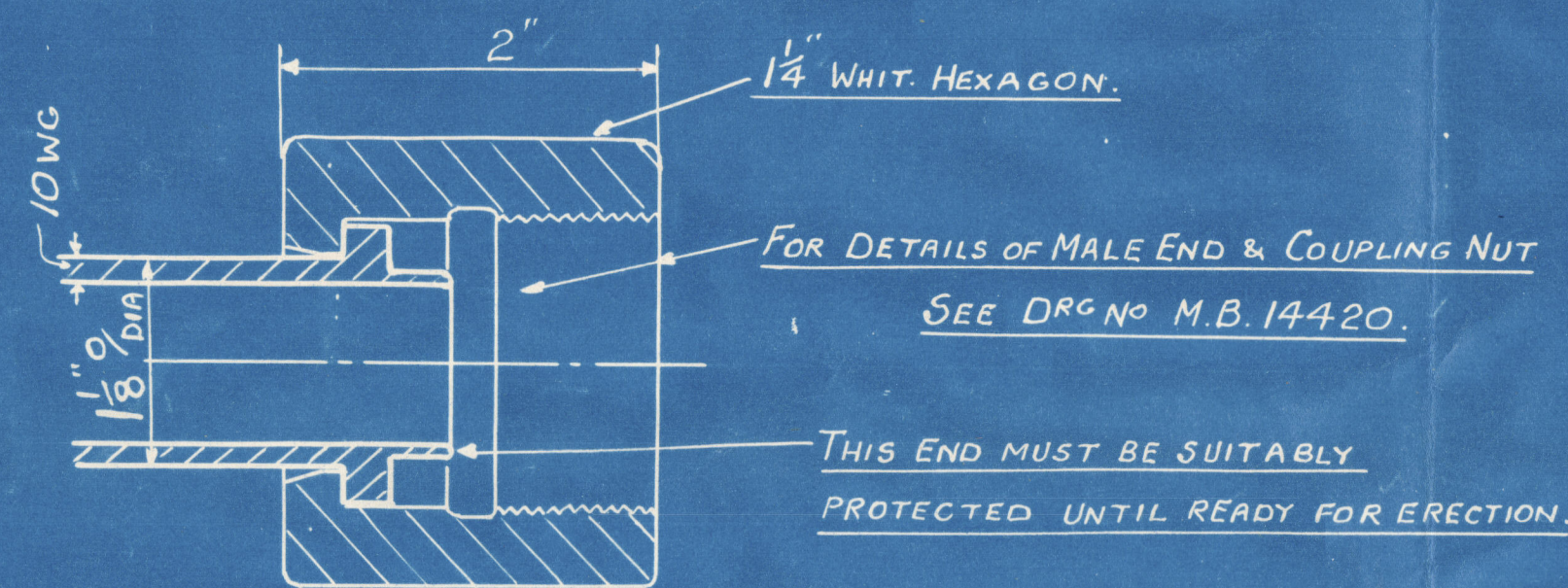
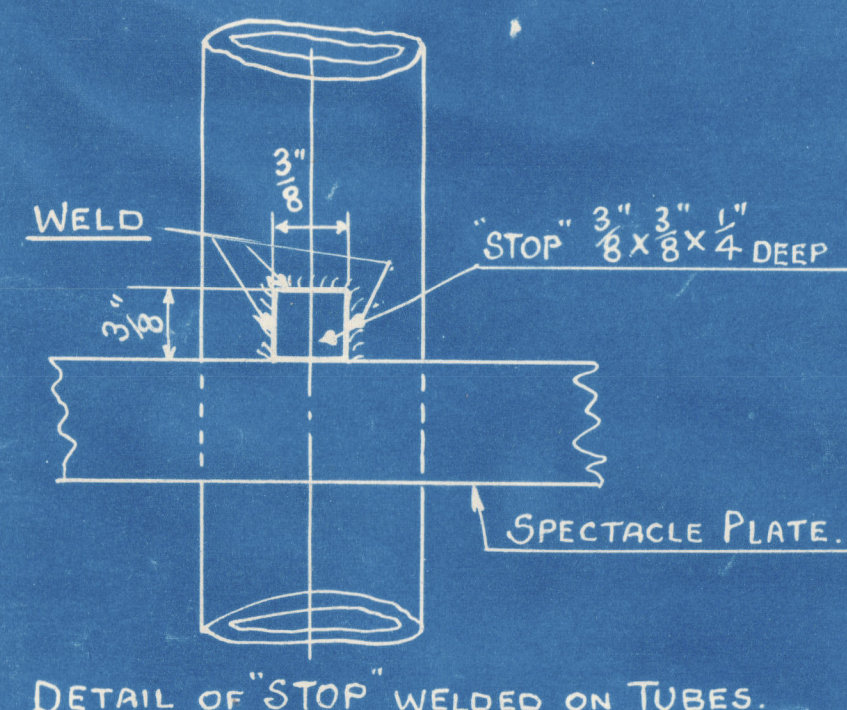


SOLID DRAWN STEEL PIPES $\frac{1}{8}$ " OUTS: DIA: X 10.WG.THICK
TO PASS LLOYDS SURVEY
WORKING PRESSURE 230 LBS PER SQ. INCH
TEST " " 690 " " " "



DETAIL OF SET ON FORGED RETURN ENDS.

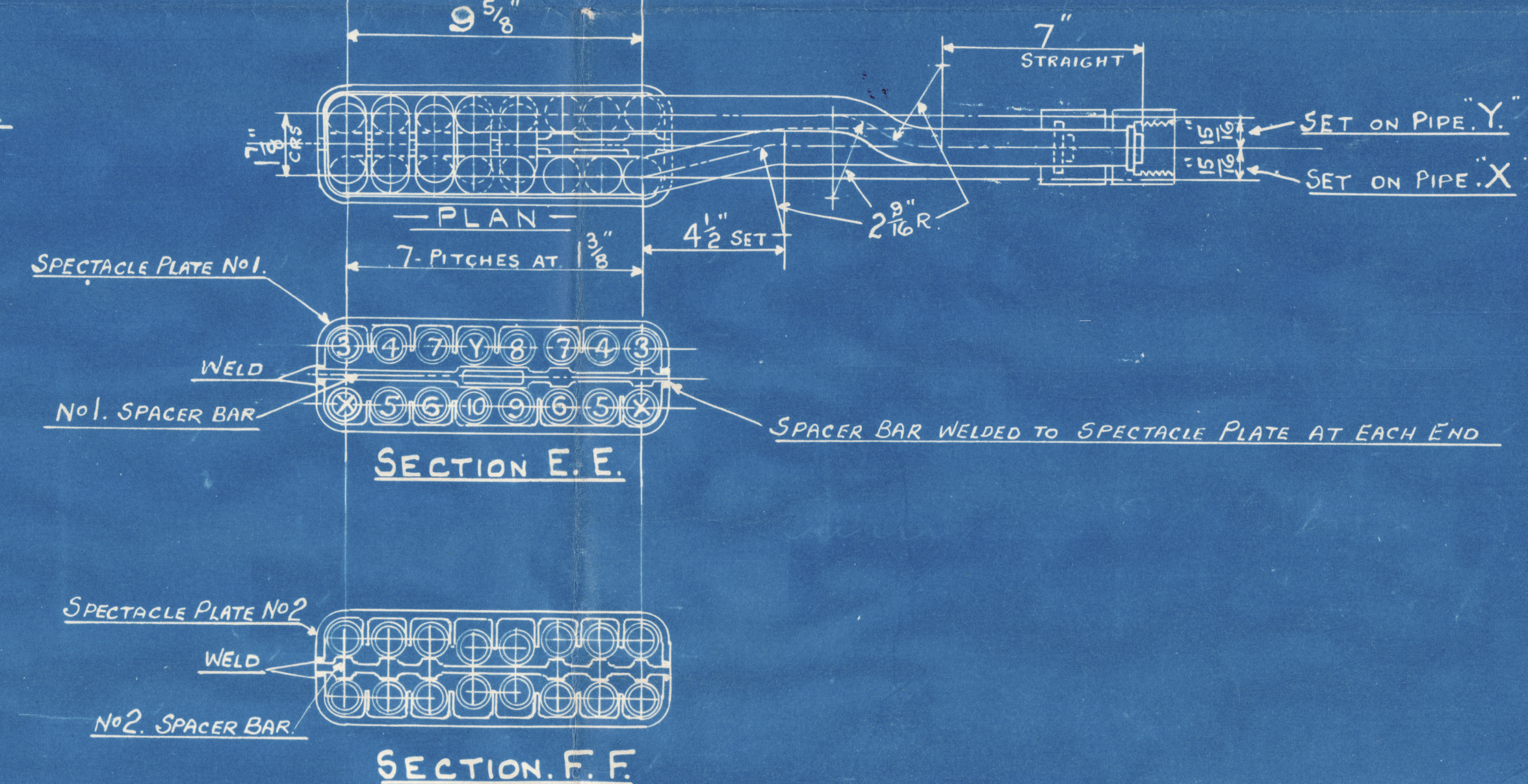
{ AT TOP - PIPES X & 3-4 & 5 - G & 7.
AT BOTTOM - PIPES 8 & 9 - Y & 10.



DETAIL OF "STOP" WELDED ON TUBES
FULL SIZE.

EVERY ELEMENT MUST HAVE A METAL TAG
FIXED ON.- CLEARLY STATING IDENTIFICATION "LETTER".

LIST OF MATERIAL FOR ONE BOILER.												
MARK	DESCRIPTION	NO OFF PER-SET	MATERIAL	PIPE LENGTHS BEFORE BENDING OR FORGING.								
				PIPE X	PIPE Y	PIPE 3	PIPE 4	PIPE 5	PIPE 6	PIPE 7	PIPE 8	PIPES 9&10
A	ELEMENT	8	S.D.S.	7'-9 ¹ / ₄ "	4'-8"	6'-2 ¹ / ₂ "	5'-9 ¹ / ₂ "	5'-11 ³ / ₄ "	5'-6 ³ / ₄ "	5'-4 ¹ / ₄ "	2'-3 ³ / ₄ "	2'-6 ¹ / ₄ "
B	" "	6	"	"	"	"	"	"	"	"	"	"
C	" "	2	"	7'-5 ¹ / ₂ "	4'-1 ¹ / ₂ "	6'-1 ¹ / ₂ "	5'-8 ¹ / ₂ "	5'-1 ¹ / ₄ "	5'-6 ³ / ₄ "	5'-3 ³ / ₄ "	2'-2 ³ / ₄ "	2'-6 ¹ / ₄ "
D	" "	2	"	"	"	"	"	"	"	"	"	"
SPECTACLE PLATE NO 1				18	H.R.S.	DRO NO 9024/62		PIPE ALLOWANCE INCLUDED IN ABOVE LENGTHS.				
" " NO 2				10	H.R.S.	" " "		FORGING MALE END = 2 ³ / ₄ "				
" " NO 3				8	H.R.S.	" " "		" RETURN END = 1 ¹ / ₄ "				
COUPLING NUTS				36	MS	" " ME 390						
CAP ENDS				72	MS	" " MB 10360						
STOPS WELDED ON ELTS				180	STEEL	WORKS STOCK						
ELEMENT HANGER				18	H.R.S.	DRO NO 9024/52						



THE SUPERHEATER CO LTD			
TITLE ELEMENTS			
REF	CKD		DRAWING NOS
15053	M- 151/241		MB 14600

S. S. "ST MARGARET."


 Bms Off
 rept. No. 50384
 © 2019
 Lloyd's Register
 Foundation
LONDON COPY

SCALE
3"=1'-0" & FULL SIZE
DWN TCD
JH Oliver 12/12/41