

ALTERATIONS	DATE	APPROVED
ALTERED IN ACCORDANCE WITH LLOYD'S RULES LATER DATED 2-18-1914 ADDITIONAL ORDER FOR PAIR P. N. 55	MAY 11/12	

CONSTRUCTED UNDER THE RULES OF THE BOARD OF SUPERVISING INSPECTORS  
DEPT. OF COMMERCE & LABOR & LLOYD'S REGISTER.  
FOR 120 LBS WORKING STEAM PRESS.

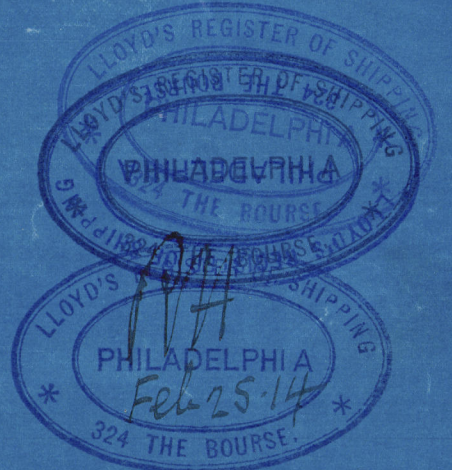
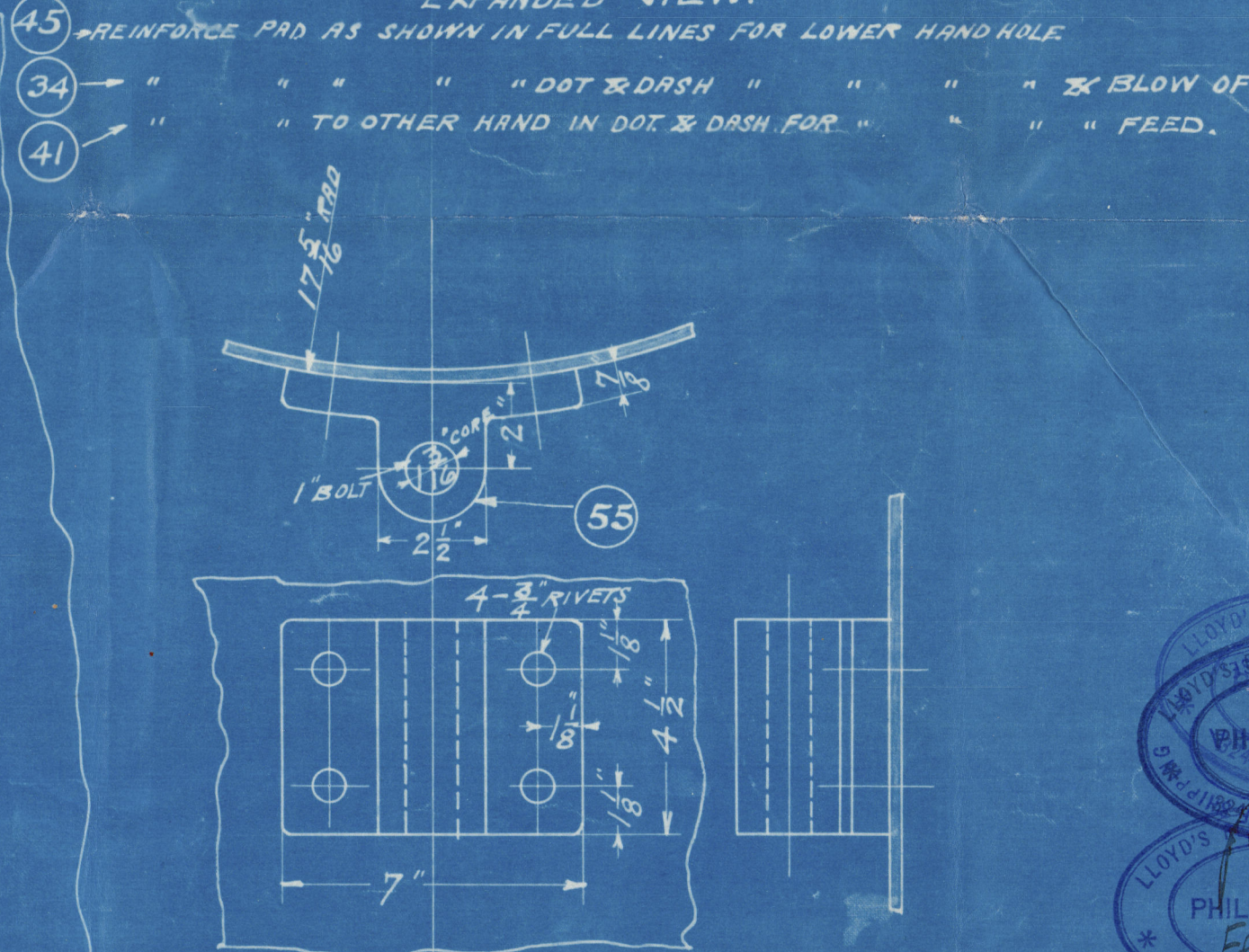
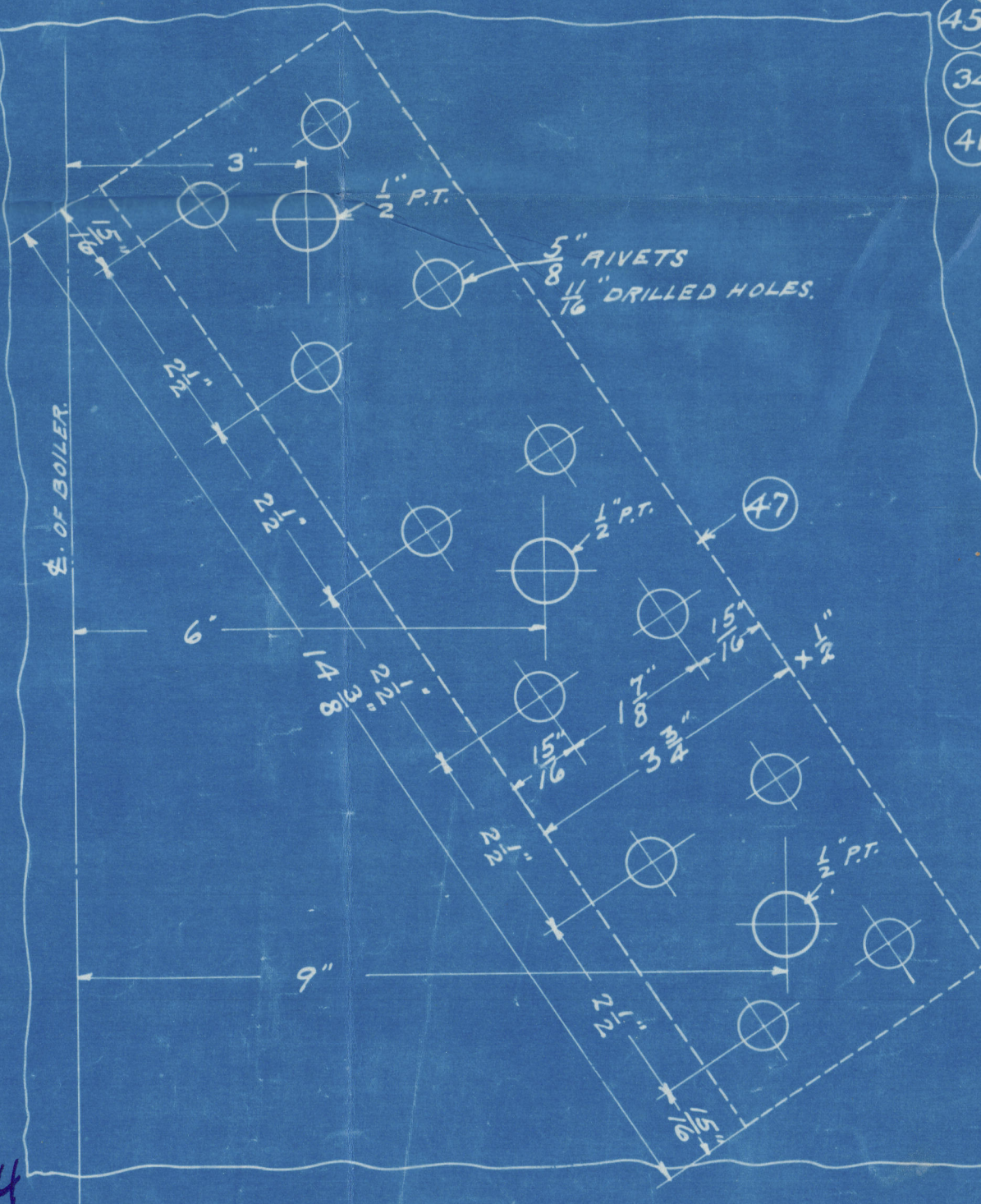
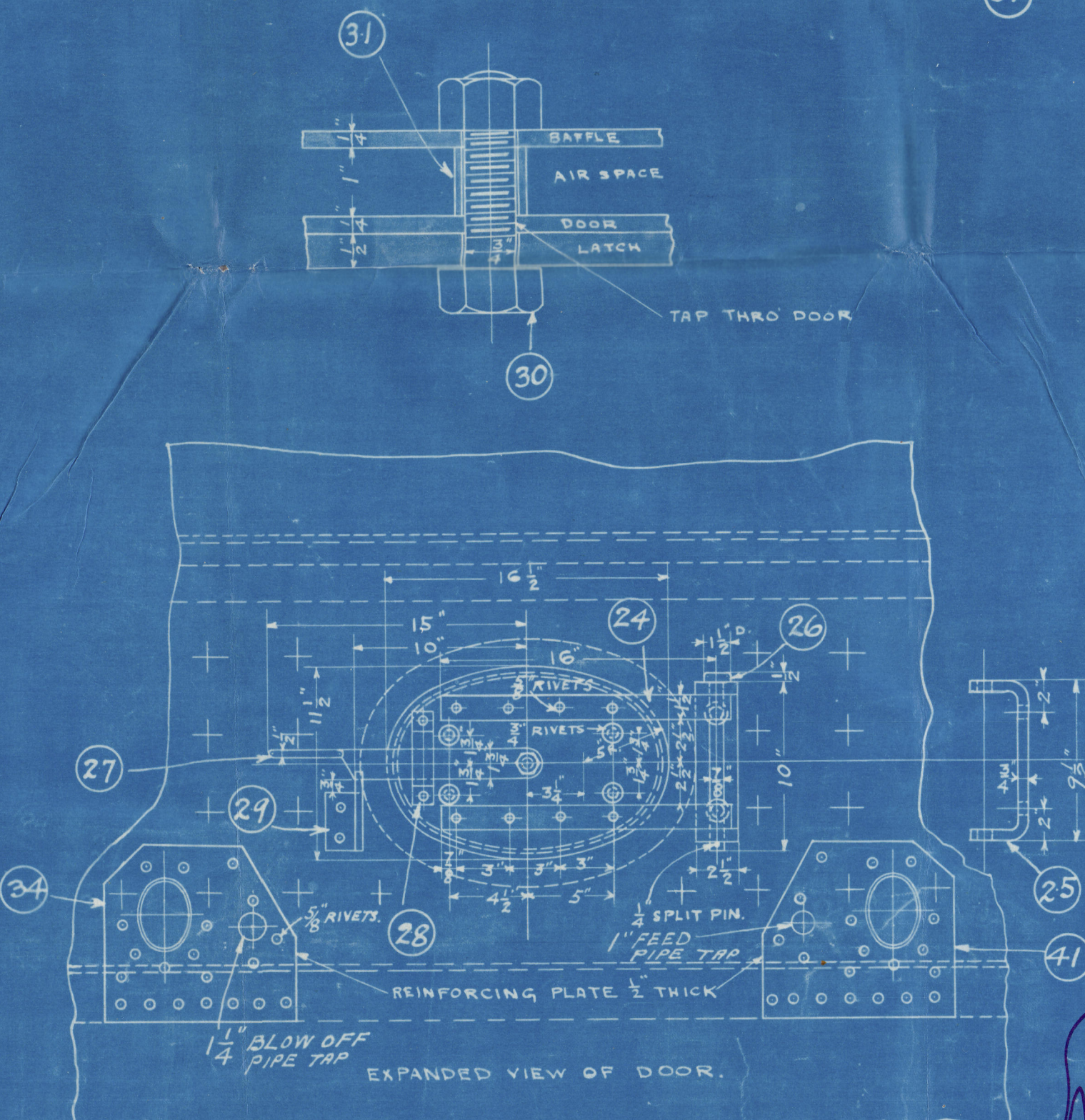
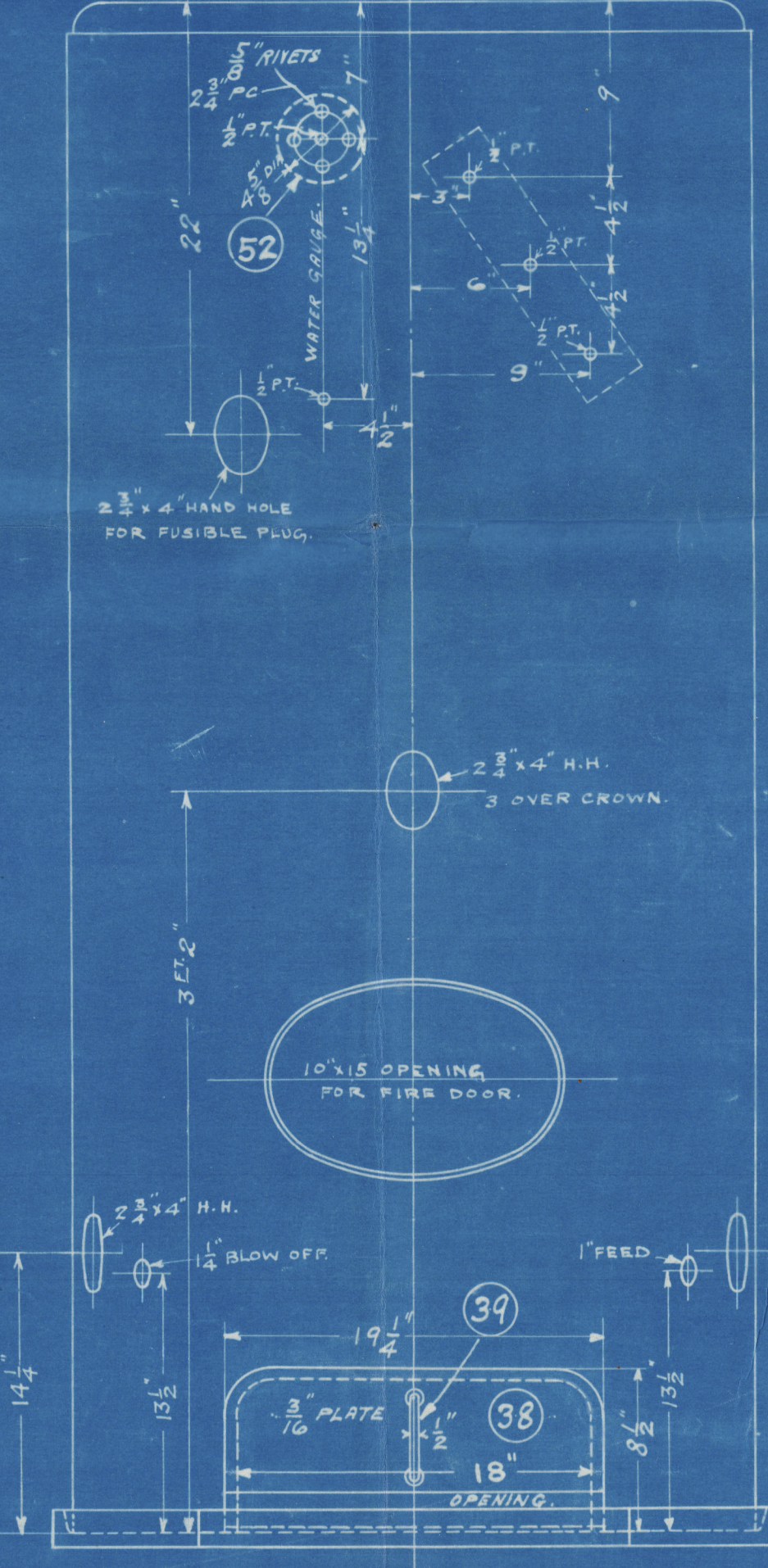
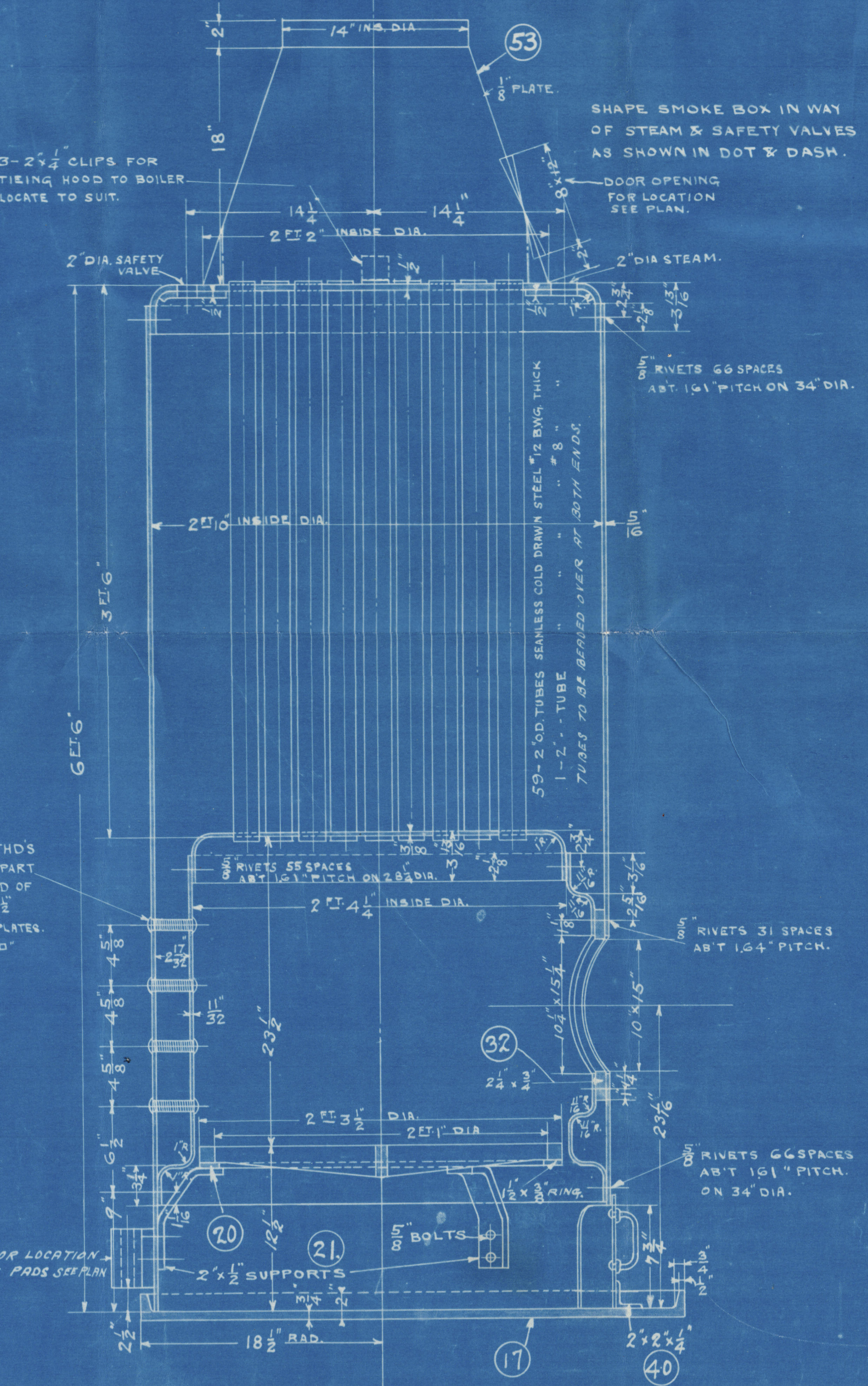
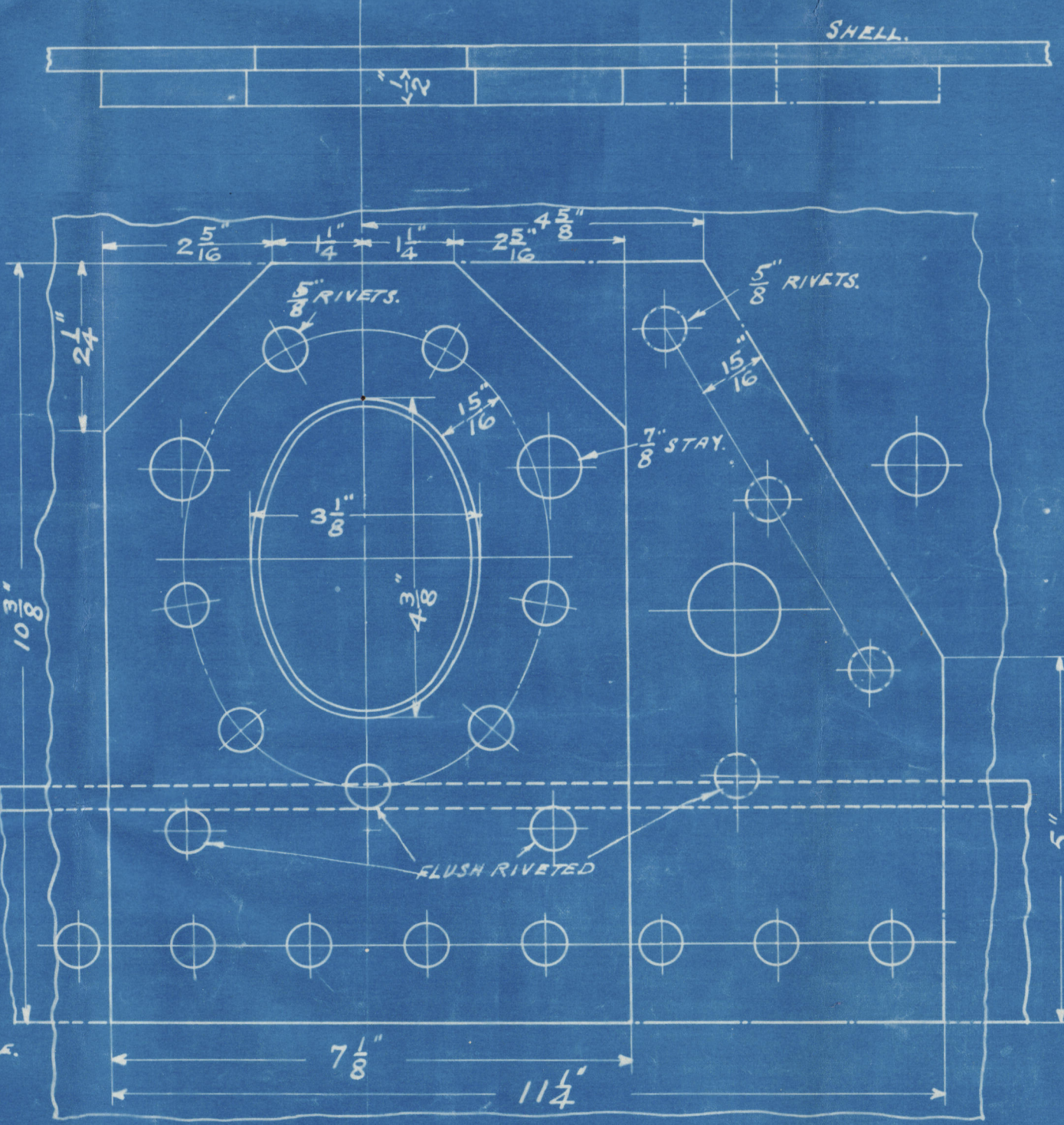
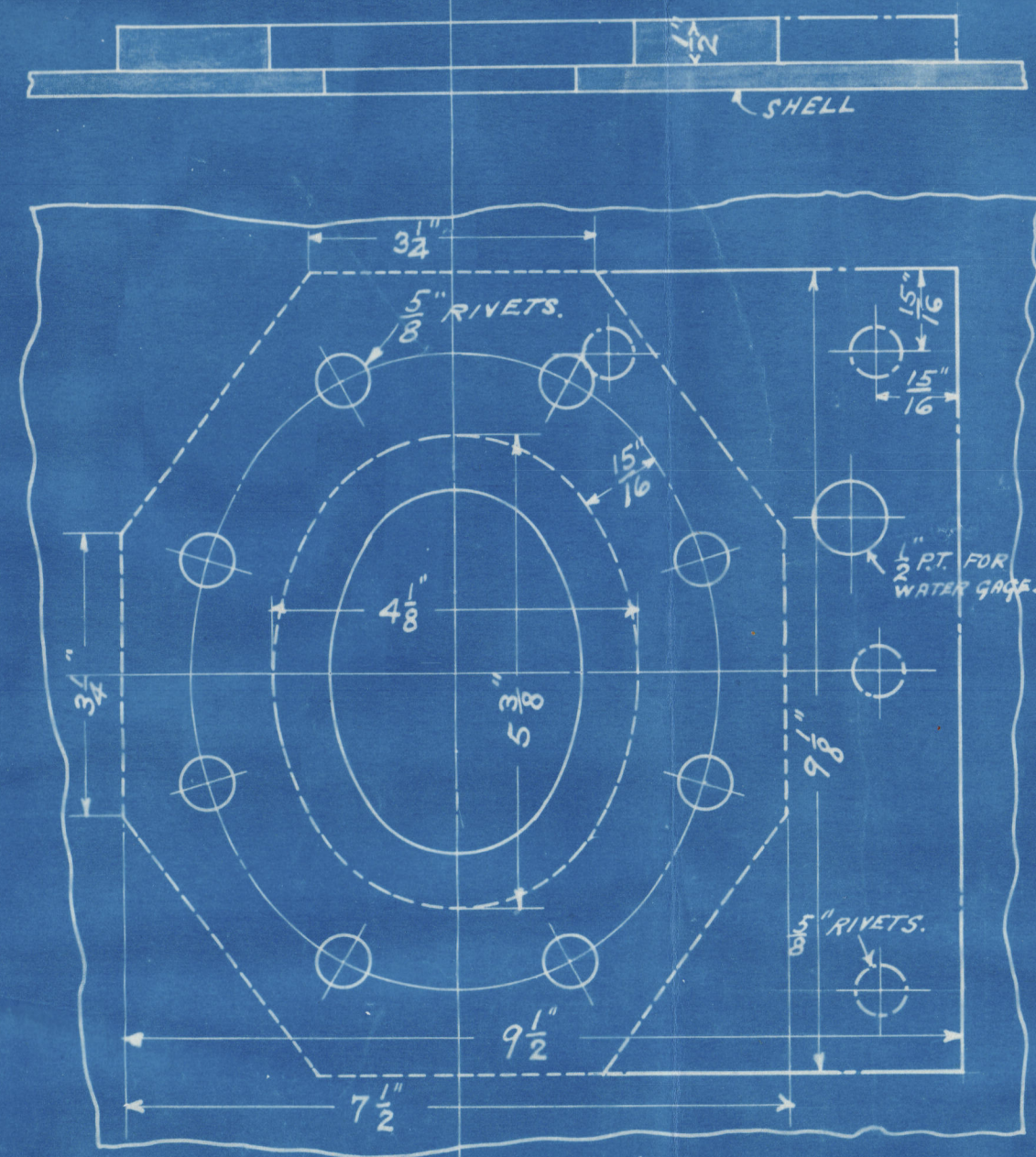
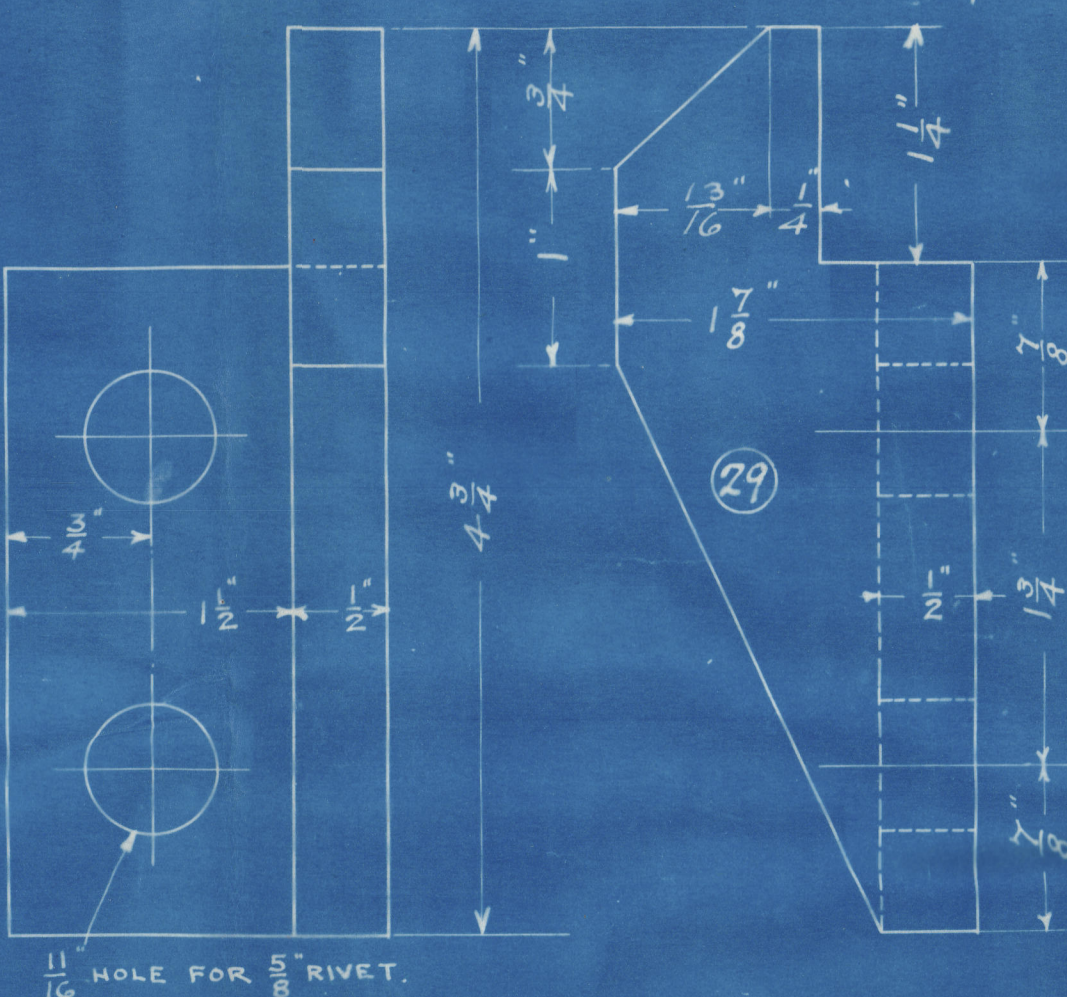
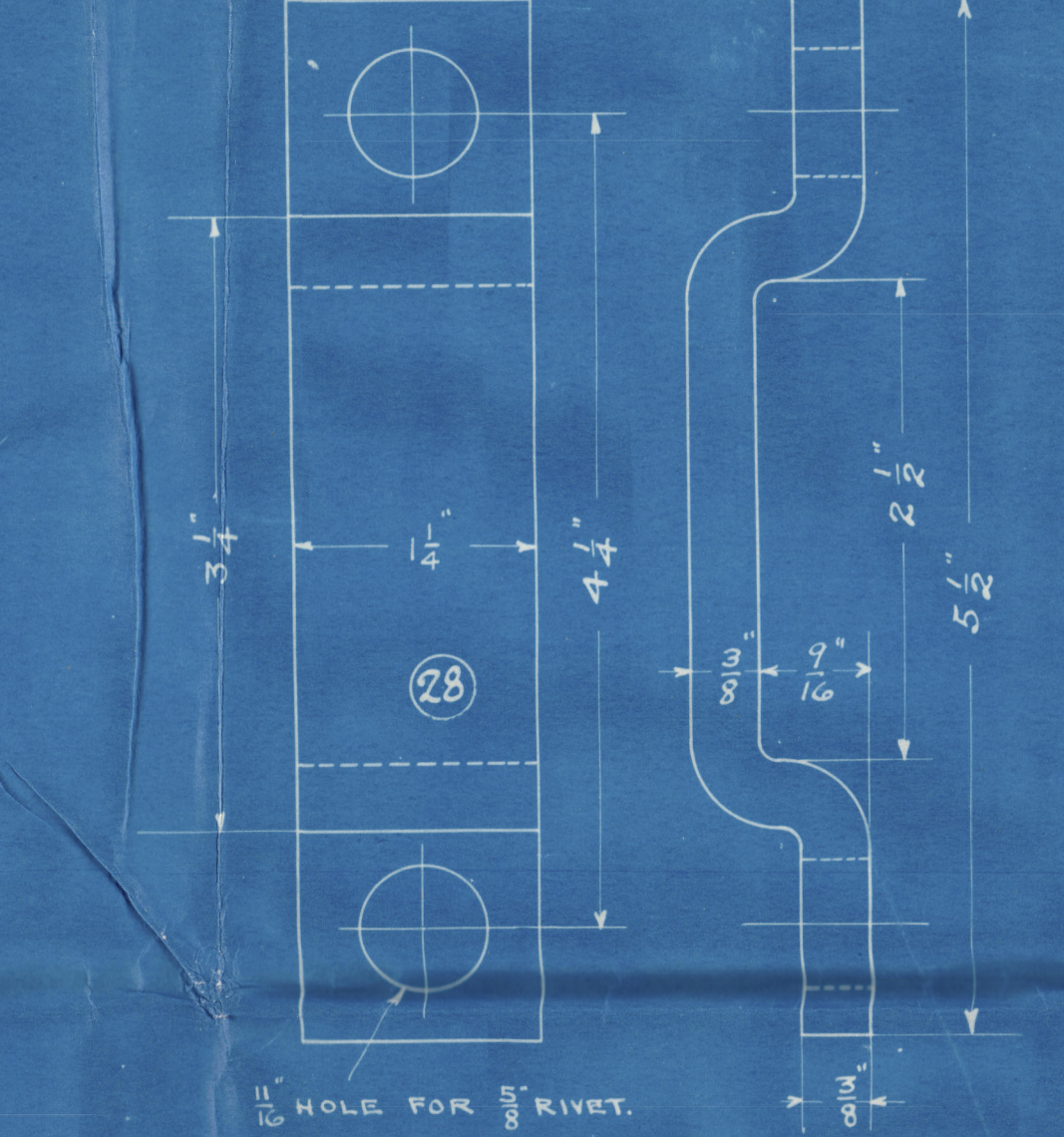
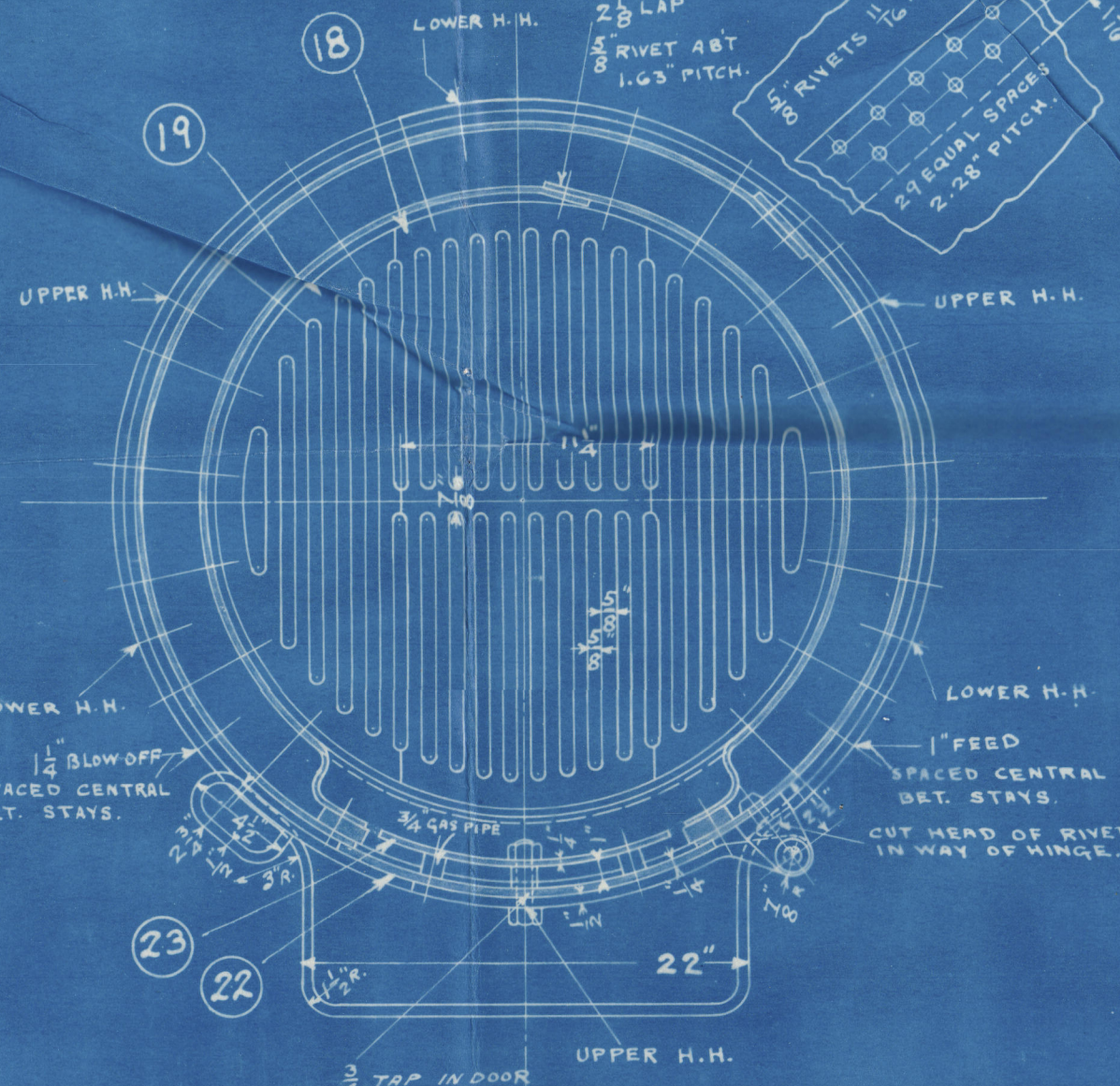
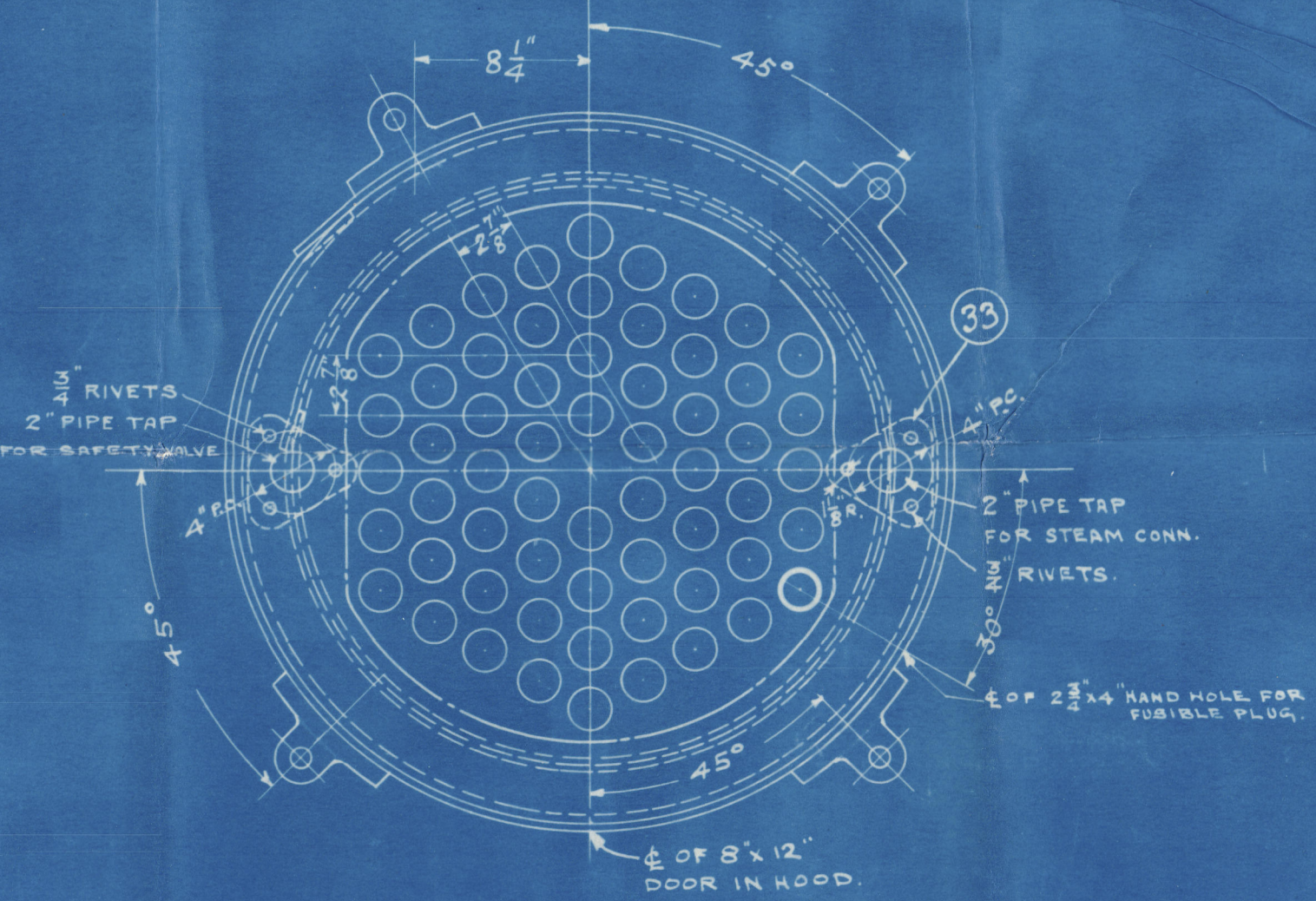
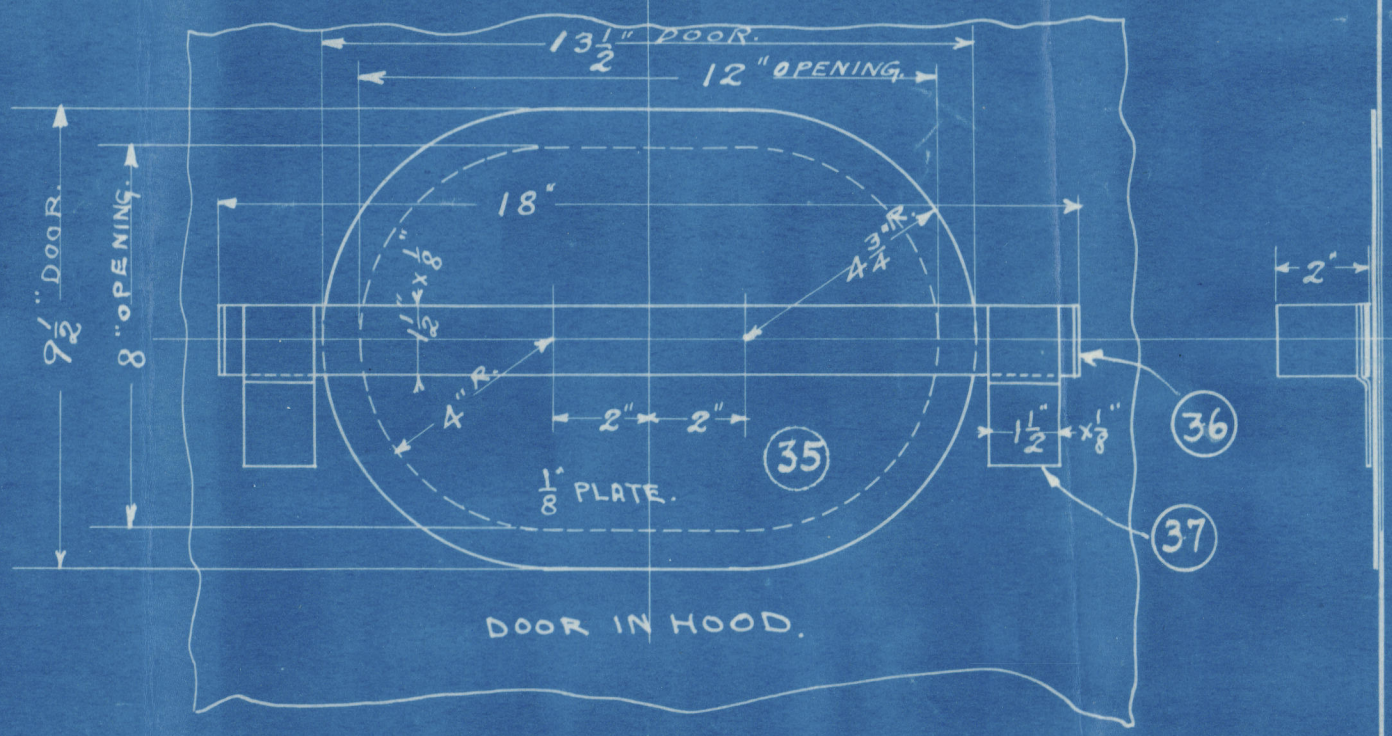
DESCRIPTION	THICKNESS	U.S. RULES	LLOYD'S RULES
SHELL PLATE	$\frac{5}{16}$ "	$\frac{62720 \times .312}{6 \times 11} + 20\% = 230$	$P. \frac{625 \times (5-2) \times 67.8}{34 \times 312} = 125$
FIRE BOX	$\frac{11}{32}$ "	$P. \frac{112 \times 2.5 \times 2}{4625} = 158$	$P. \frac{90 \times 5.5 \times 2}{19726} = 138$
FIRE BOX STAY	$\frac{7}{8}$ " DIA	$S. \frac{120 \times 2.25 \times 4625}{4071} = 5794$	

HEATING SURFACE	
TUBES	107.6 #
FIRE BOX	19.1 #
TOTAL H.S.	126.7 #
GRATE SURFACE	4.3 #
RATIO	29.4
CALORIMETER	1.03 #
RATIO	4.1
EVAPORATION 50 LBS. WATER PER SQ. FT. OF GRATE PER HR.	

TENSILE STRENGTH OF SHELL PLATES 62720 TO 71680 LBS  
" " FLANGE " 58240 " 67200 "  
WORKING PRESS. 120 LBS PER SQ. INCH  
WATER TEST " 180 " " " "  
2" DIA. SAFETY VALVE SINGLE SPRING.

QUANTITY FOR ONE COMPLETE					
No.	NAME	MATL	PATT NO	WT. LBS	REMARKS
1	ASH PAN	C.I.	125-565-17		
1	MIDDLE GRATE BAR	"	125-565-18		
2	SIDE	"	125-565-19		
2	HALF BEARER BAR	W.I.			FASTENED TOGETHER WITH SINGLE BUTT JOINTS.
3	BEARER BAR SUPPORT	W.I.			
1	DOOR ELLIPTICAL	S			10 1/2 x 11 1/2 x 1/4"
1	BAFFLE	"			13 x 9 x 1/4"
2	HINGES	W.I.			
1	HINGE BRACKET	"			
1	" PIN	"			
1	LATCH	"			
1	GUARD	"			
1	CATCH	"			
1	BOLT	"			
5	3/4" GAS PIPE	W.I. STD			1" LONG
1	DOOR RING	W.I.			
2	REINFORCING PLATE	S			
1	"	"			3RD ON 3/4" 125-565-1
1	DOOR IN HOOD	"			13 1/2 x 9 1/2 x 1/4"
1	CLAMP	W.I.			1 1/2 x 3/8 x 22" LONG
2	CLIP	"			
1	ASH PIT DOOR	STEEL			
1	" HANDLE	W.I.			
1	" ANGLE	STEEL			2 x 2 1/2 x 19 1/2" LONG
1	REINFORCING PLATE	"			3RD ON 3/4" 125-565-1
1	REINFORCING PLATE	"			
3	"	"			
1	"	"			
1	"	"			
1	"	"			TAKE FROM PLATE CUT OUT OF SHELL FOR FIRE DOOR COLLAR
4	P.D.	C.S.	125-565-55		

FOR CONT. 156/157 SEE B.M. 156/157-641-



ENGINE DEPARTMENT  
TITLE  
AUXILIARY BOILER 22 1/10" INSIDE DIA.  
BY GET C. HIGH. 120 LBS PRESS.  
SCALE 1 1/2" = 1 FT. DRAWN BY J.E.S. DATE 10 JAN 1914  
TRACED BY 222, CHECKED BY C.L. CHIEF DRAFTSMAN.  
NEW YORK SHIPBUILDING COMPANY,  
CAMDEN NEW JERSEY, U.S.A.  
DR. 125-641-1 REGISTERED  
APPROVED: [Signature] CHIEF ENGINEER

10.3.14  
J.P.S.

REINFORCE PAD EXPANDED.  
BENT TO SUIT CURVE OF BOILER.



NEW YORK SHIPBUILDING CO.,  
CAMDEN, N. J., U. S. A.  
BLUE PRINT ROOM  
Print No. 43.  
Made JAN 7 1914  
For Dep't 13

W116-0156

PHILADELPHIA  
New York 8/13 8



© 2019

Lloyd's Register  
Foundation



PHILADELPHIA

New York S B &  
1 Donkey Boiler

Contracts 156-~~7~~

W.P. 120~~7~~

No 63

LLOYD'S TEST

180<sup>th</sup>

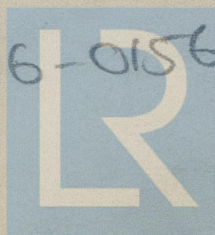
5-25-14

R.H.

s.s. Gulf light. Cont: no 156  
n.n. "Refast"

PHILADELPHIA. Rpt no 2160

W116-0156



© 2019

Lloyd's Register  
Foundation