

N<sup>os</sup> 9923

## NUMERALS.

$L+D$	$450 \times 37$	16650	✓
$L \times (B+D)$		45000	✓
$D$		37	✓
$L/D$	TO UPPER DECK	12.17	✓
$L/D$	TO BRIDGE DECK	9.98	✓
$d$		9	✓

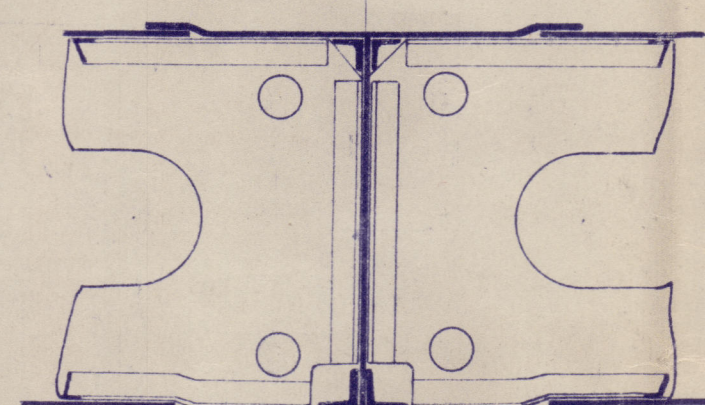
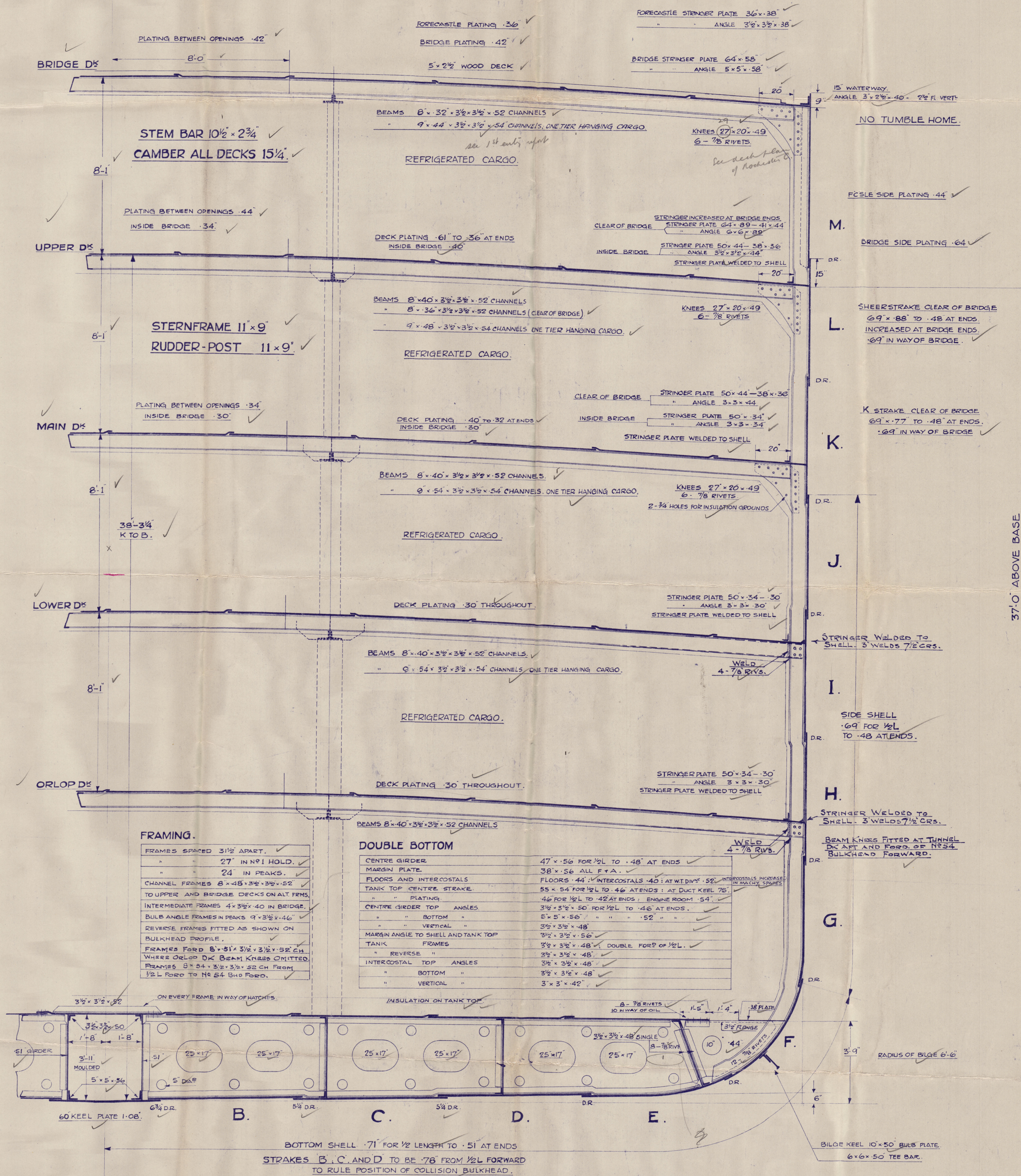
# MIDSHIP SECTION

SCALE:  $\frac{1}{2}'' = 1 \text{ FOOT.}$

**DIMENSIONS** 450' B.P.  $\times$  63'  $\times$  37' MOULDED TO UPPER DECK.

LLOYD'S CLASS ✠ 100 A1 "FULL SCANTLING VESSEL" 42% ERECTIONS.

EQUIPMENT	NUMERAL NOT EXCEEDING	48800.	
3 BOWER ANCHORS (STOCKLESS)	232 CWT.	COLL WT.	
1 STREAM ANCHOR (EX STOCK)	23½ "		
300 FATHOMS	2½	CHAIN CABLE.	
120 "	4½	S.F.S.W.R. (G=24) STREAM WIRE.	
130 "	5½	S.F.S.W.R.	TOWLINE.
2 HAWSERS	100 FMS	2¾	F.S.W.R.
2 WARPS	100 "	"	"



KEEL PLATE  
60" x 90" FOR 3/5L ✓  
TO .81 AT ENDS.  
RULE SIZE 53 1/2" x 90 ✓

SECTION THROUGH MOTOR ROOM SHOWING ENGINE SEATING TO  
BE SUBMITTED SEPARATELY.

BOTTOM FORWARD STRENGTHENING AS PER RULE

LR  
3.12.34  
As



*Rowallan Castle*

*H & W*

*10 12 / 3*

MIDSHIP SECTION

*Wreck Section 108*

\* ROWALLAN CASTLE  
BEL. F. E. R. T. NC. 12335

W116-0102



© 2019

Lloyd's Register  
Foundation