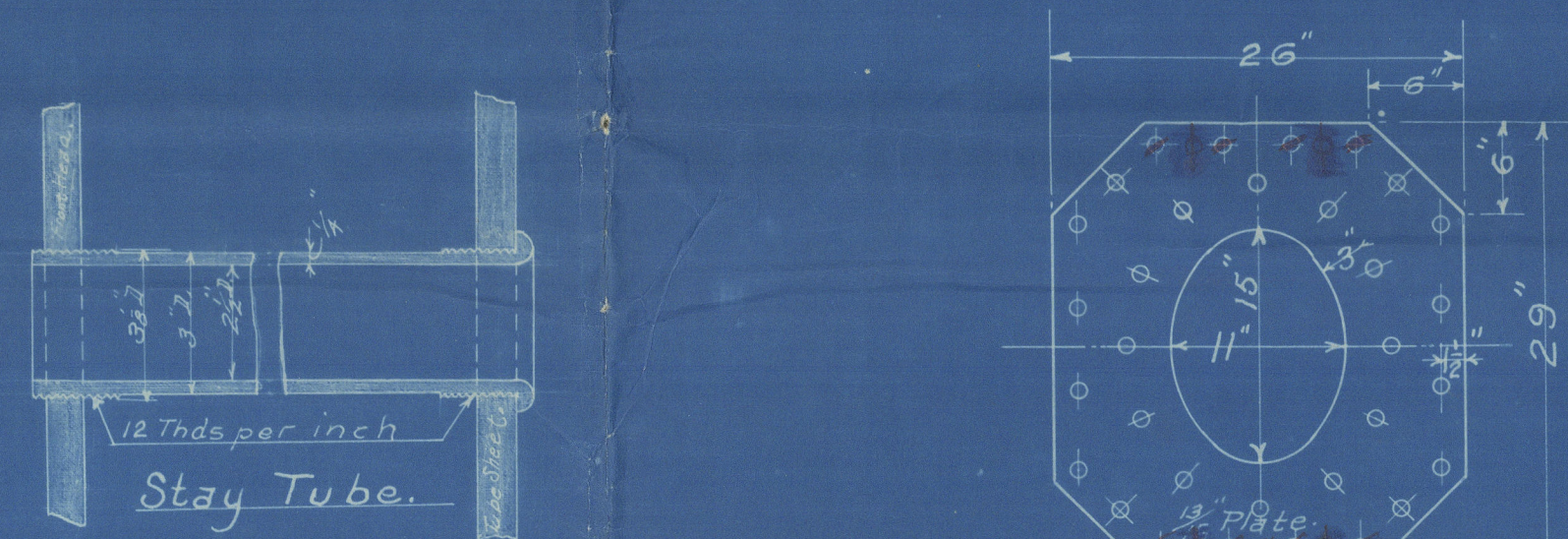
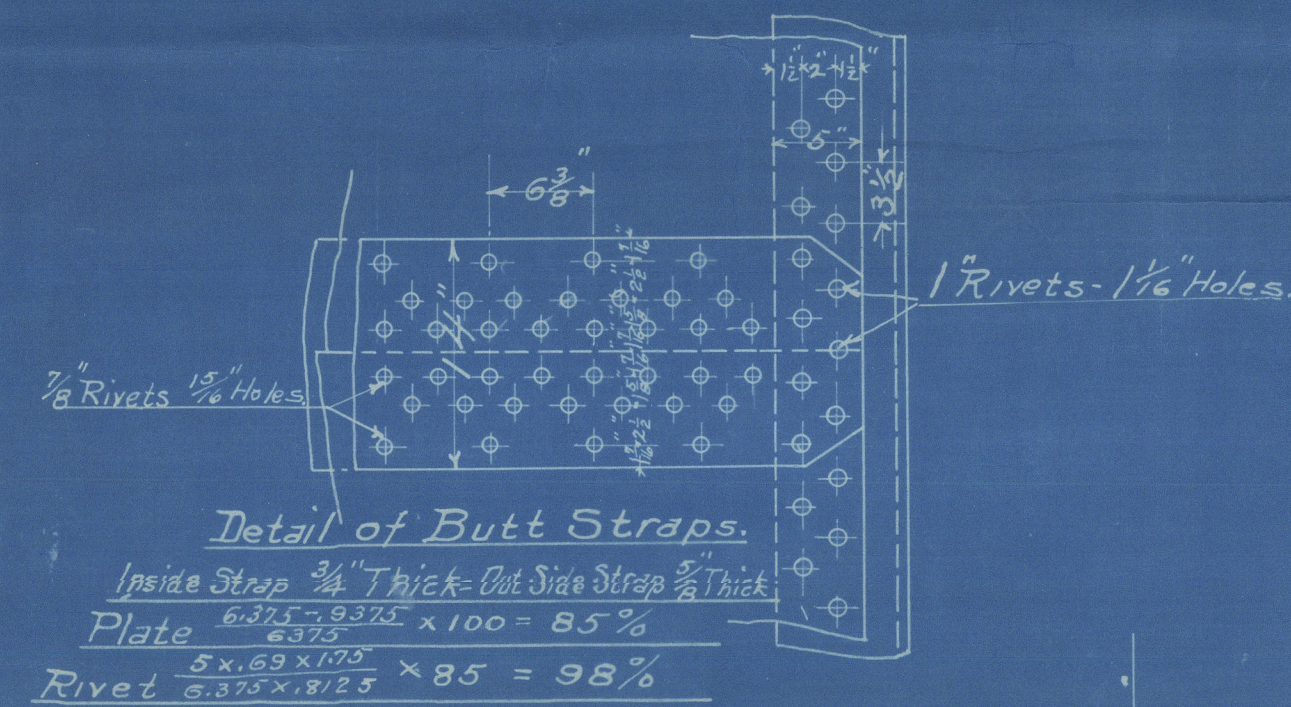


Seattle (U.S.A.) District

9/2/16

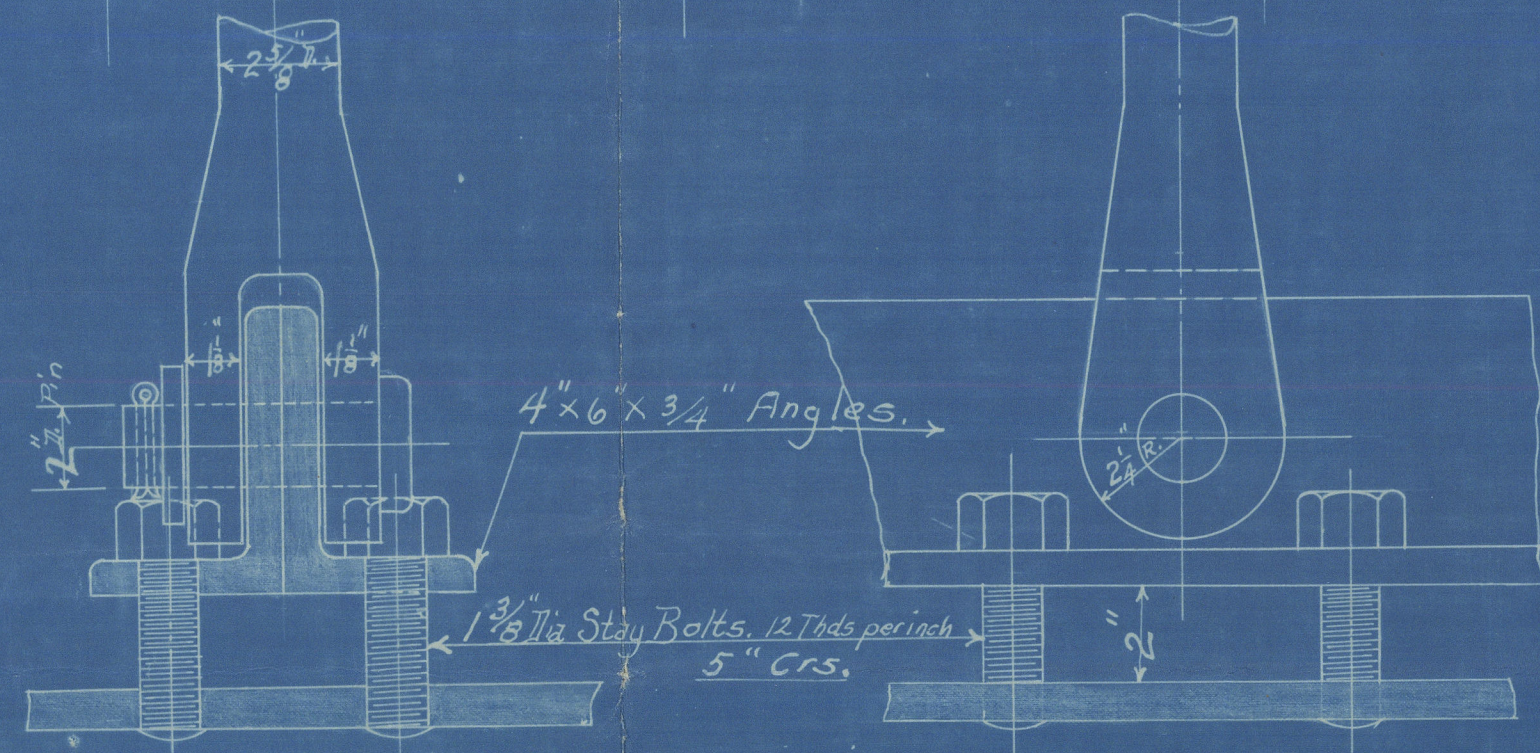
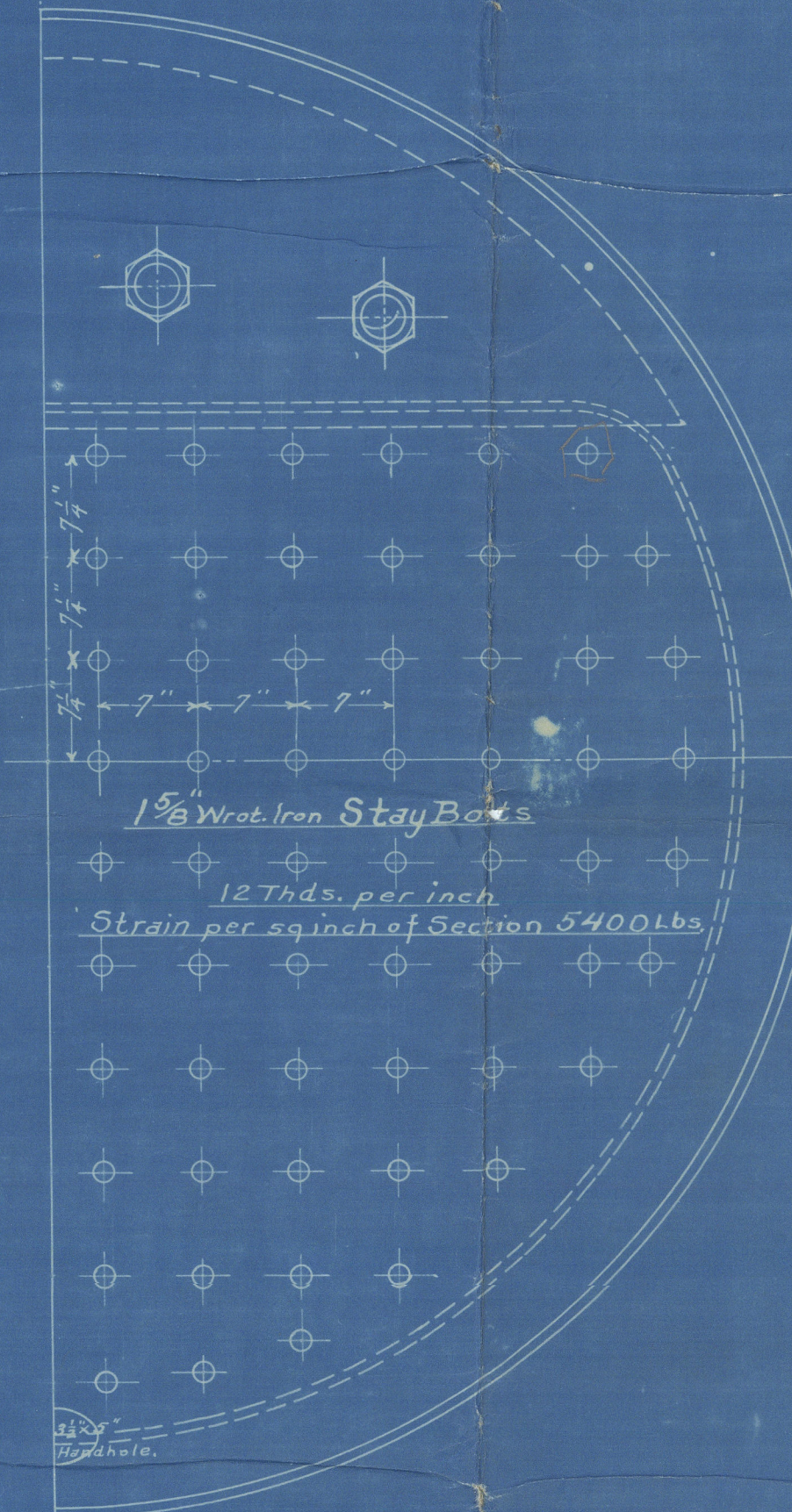
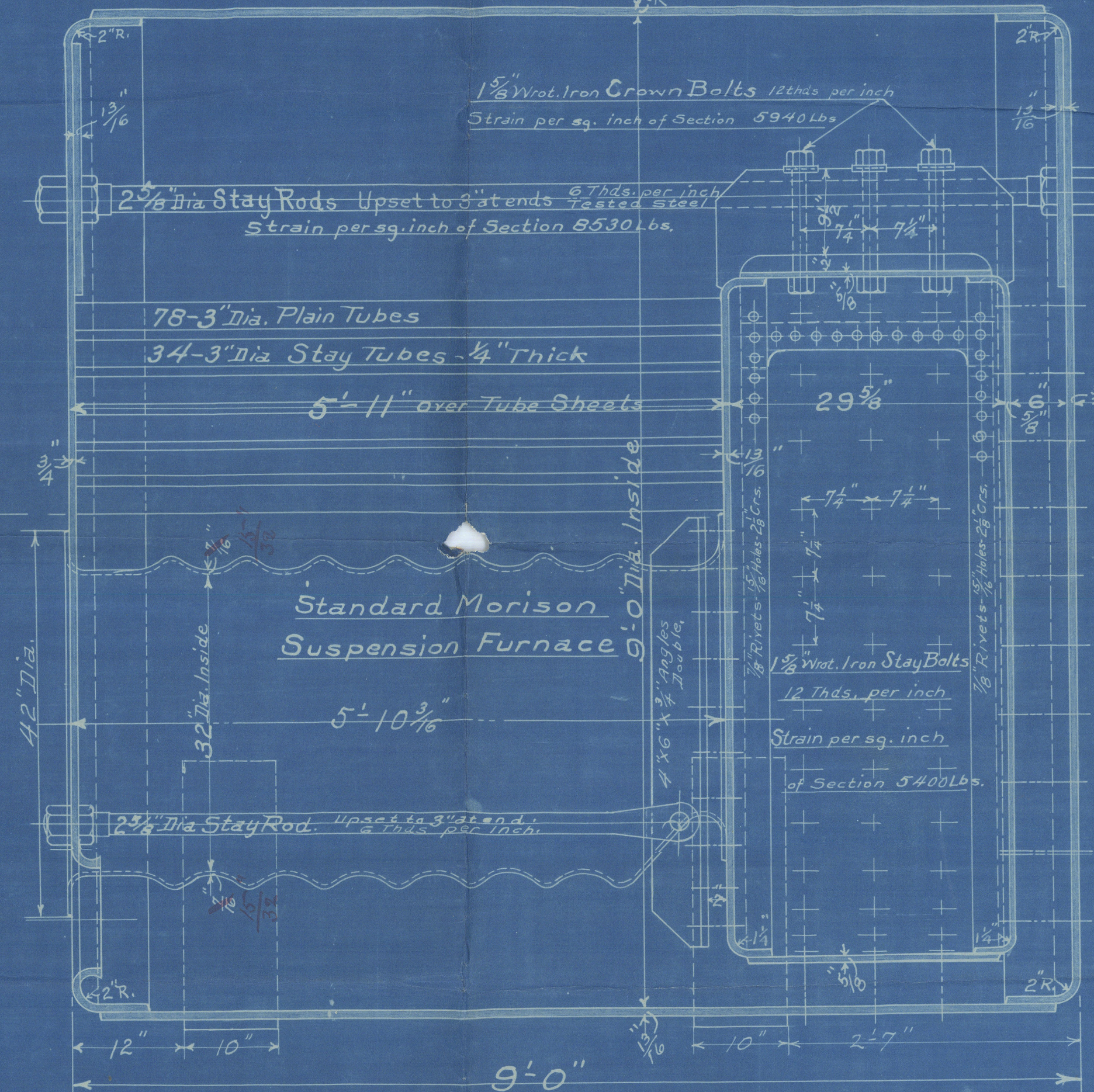
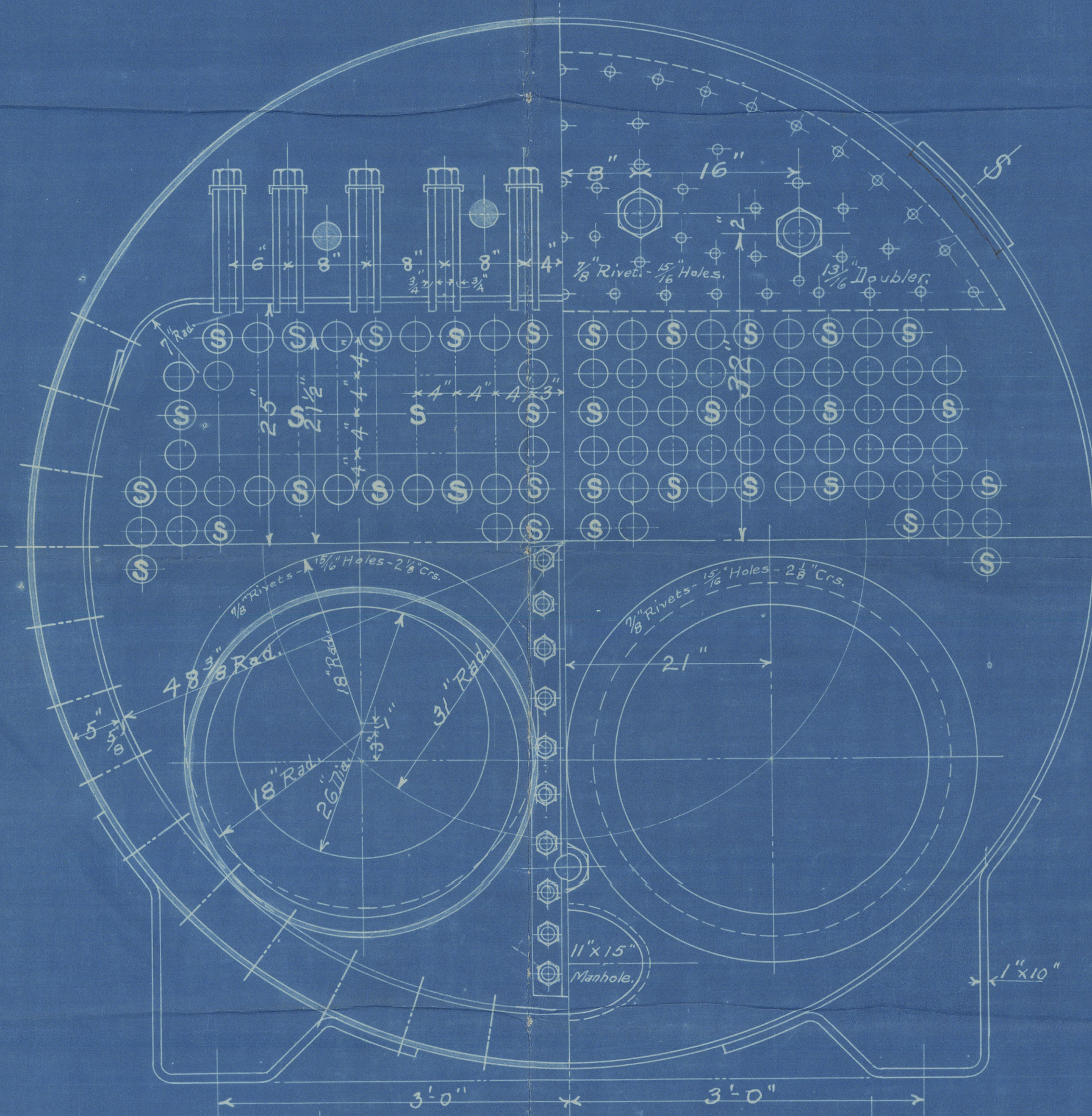


Manhole Reinforcing
1" Rivets - 1/16" Holes.



Detail of Butt Straps.

Inside Strap 3/4" Thick - Outside Strap 3/8" Thick
Plate $\frac{6.345 \times 9.375}{8.33} \times 100 = 85\%$
Rivet $\frac{5.3 \times 1.193}{6.375 \times 1.125} \times 85 = 98\%$



U.S. Rules			Lloyds Rules		
Item	Working Pressure		Item	Working Pressure	
Shell	63000 x 8/125	168	Shell	22 x (13-2) x 8.5	196
Upper Heads	200 x (12+13.72)²	256	Upper Heads	175 x (12+13.72)²	234
Tube Sheet Front Head	140 x 12²	210	Tube Sheet Front Head	140 x 12²	210
Wrapper Sheet	120 x 100	228	Wrapper Sheet	100 x 100	190
Crown Sheet	135 x 100	211	Crown Sheet	135 x 100	232
Crown Bars	825 x 9.5² x 1.5	226	Crown Bars	10660 x 9.5² x 1.5	237
Tube Sheet	4-2.782 x 8.125 x 2.708	208	Tube Sheet	1750 x (4-2.782) x 1.3	236
Furnace	15600 x 4.375	200	Furnace	1259 x (7-2)	191

All holes Drilled - Steel Plates - Steel Rivets

Shell 62720 to 71600 Lbs T.S.
Lloyds Flange 58240 to 67200 " "

All screwed Stays to be Drilled both ends with
3/8" Hole to a depth of 1/2" beyond inside surface
of Sheet.

Working Pressure 180 Lbs.
Tensile Strength 63000 Lbs.
Heating Surface 700 sq. ft.
Lloyds & U.S. Steamboat Inspection Rules

Donkey Boiler 9'-0" Dia. x 9'-0" Long
for
United Engineering Works Hull N° 16
San Francisco, California.
Scale: 1" = 1 Foot. Date: Jan. 1916
Commercial Boiler Works,
Seattle, U.S.A.

9/2/16
APR



Boiler not attached
11-11-16

27.1.16



Seattle (U.S.A.) District

Donkey Boiler to be made
by the Commercial Boiler
Works Seattle, for United
Engineering Works, San Francisco,
Hull No. 116.

Senta
S. S. "Regulus"

S. No. Rkt. No. 2477.



© 2020

Lloyd's Register
Foundation