

BOILER NO	SHIP NO	REMARKS
5436	615	AS PLAN
5438	540	Tubes 8g.
5439	542	Tubes 8g.

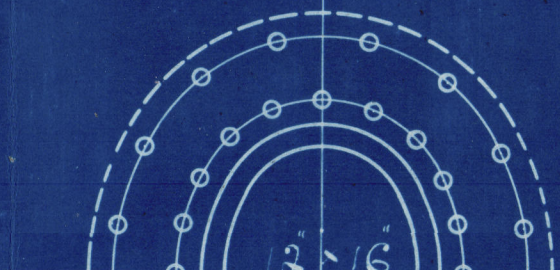
STEEL BOILER

10-6 DIA 10-0 LONG 100 LBS W.P. LLOYDS

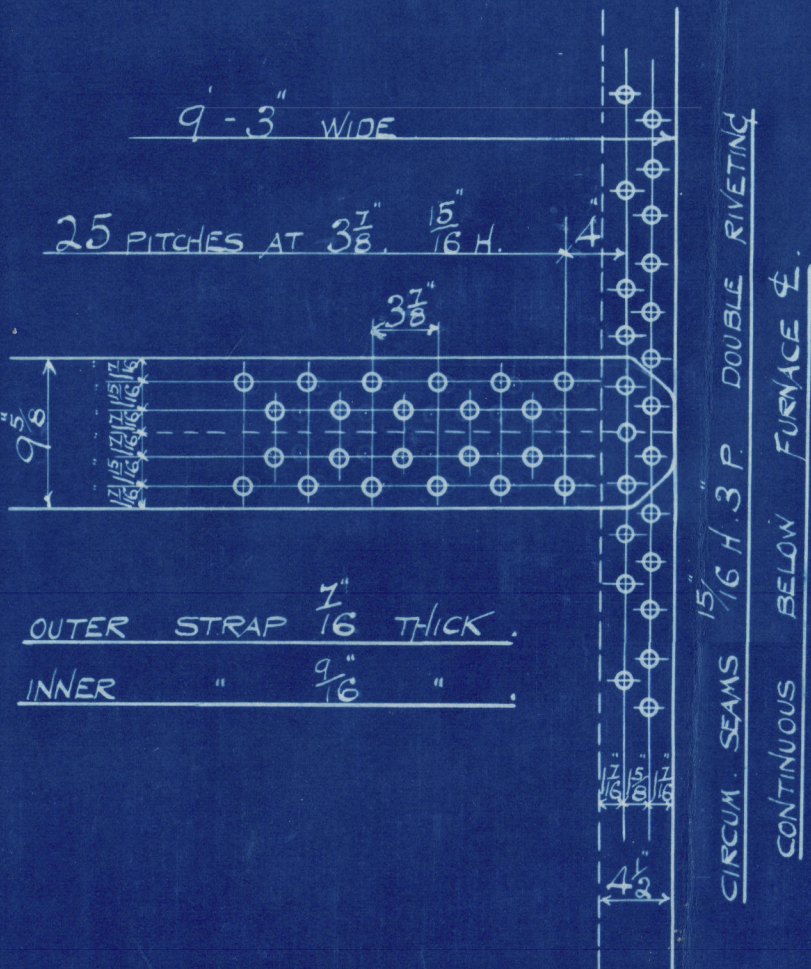
5531-2

SPECIFICATION OF MATERIALS

SHELL, STRAPS, COMPS RING, GIRDERS & MAINSTAY BARS	28 TO 32 TONS.
BALANCE OF PLATES, RIVETS & SCREW STAYS	26 " 30 "

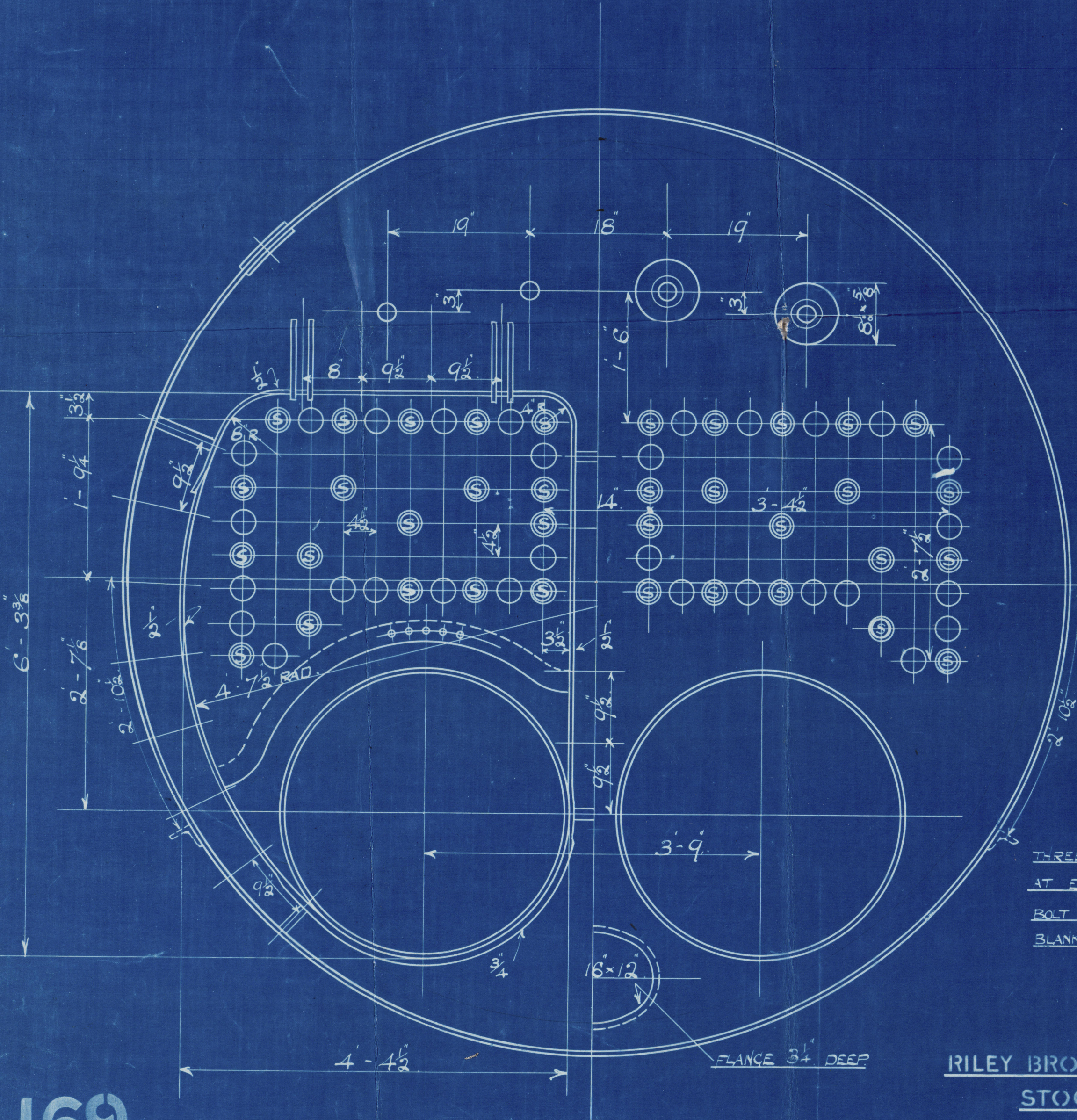


MANHOLE RING RIVETING
36-15 1/8" H. ABOUT 3" P. AT INNER ROW.



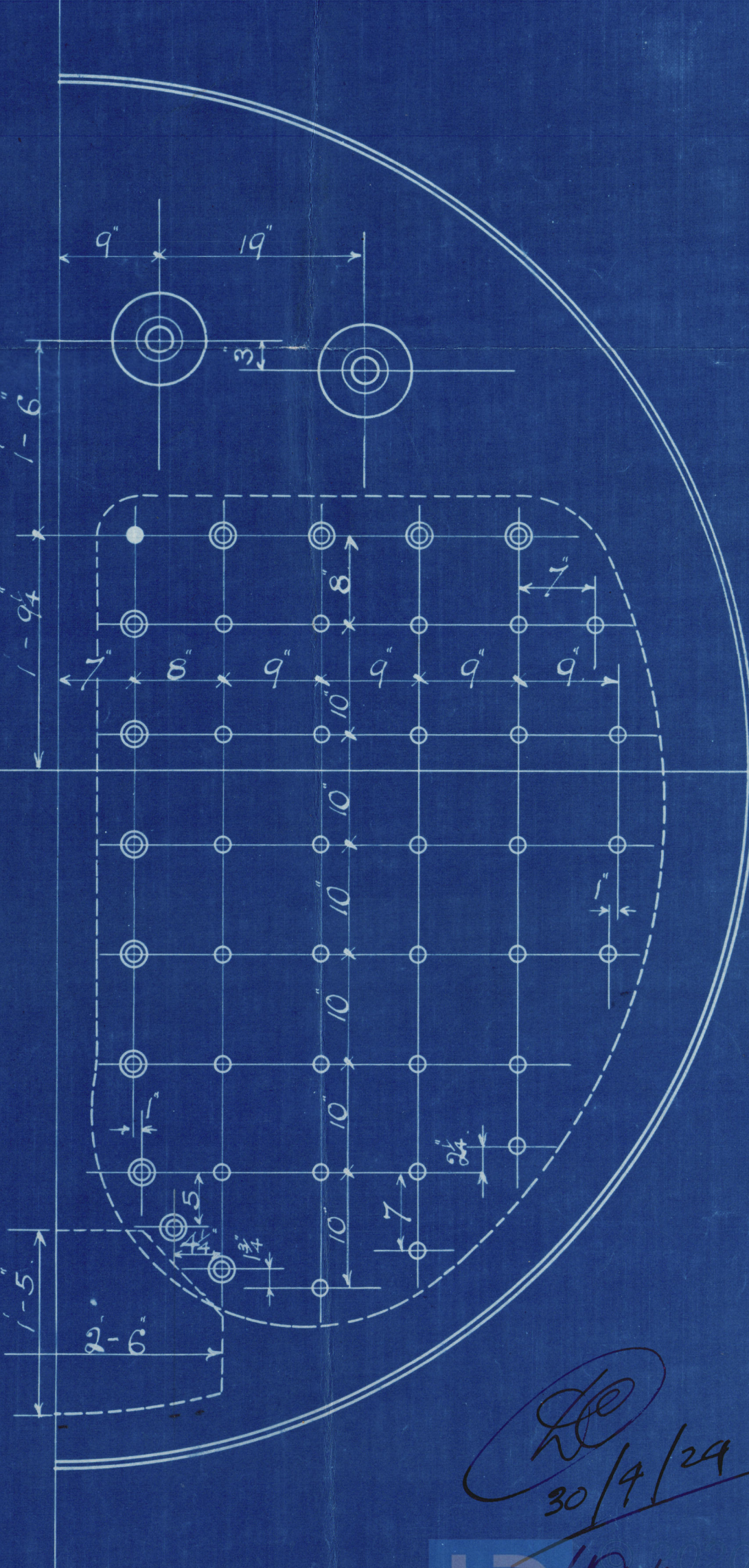
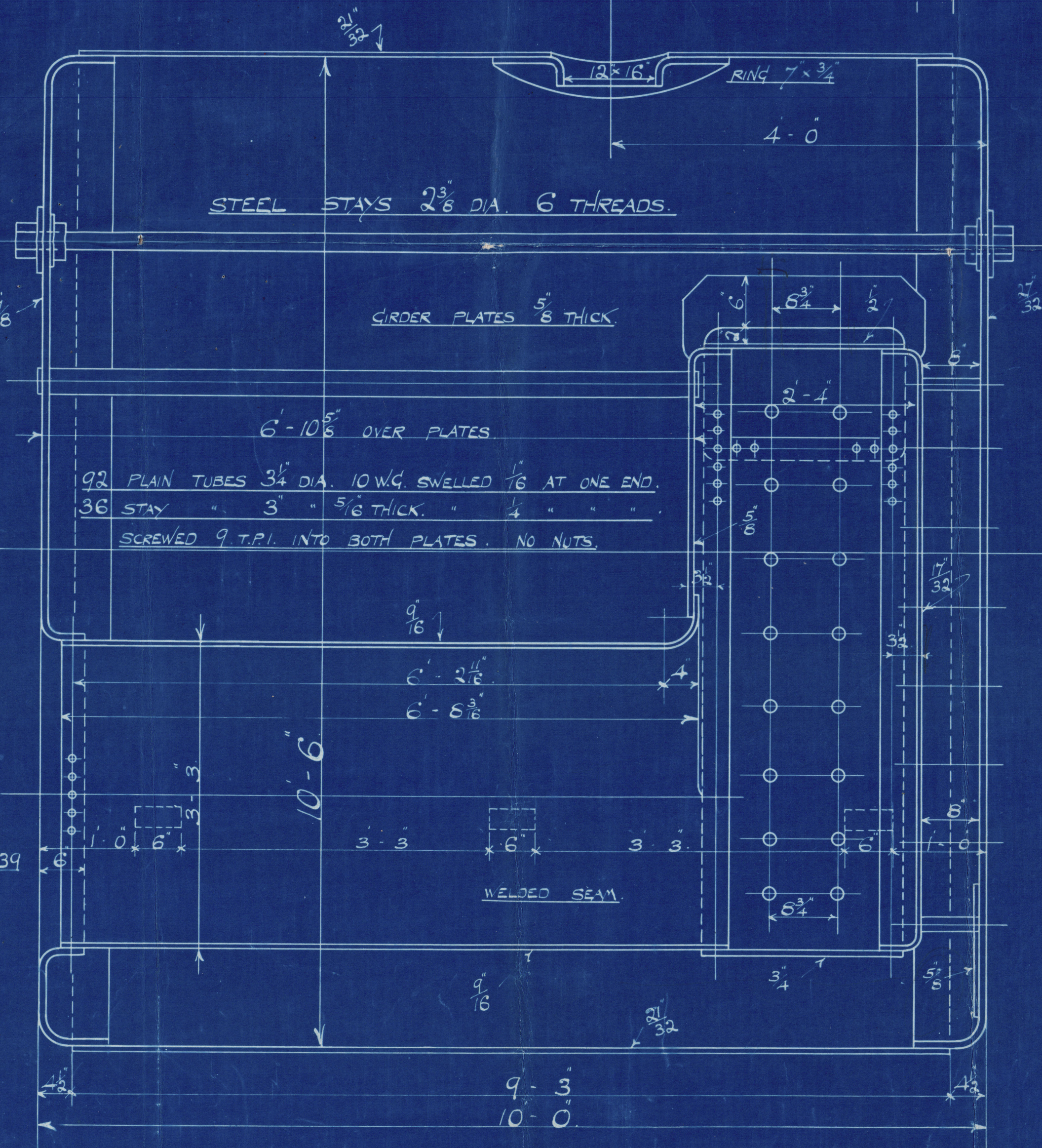
COMBUSTION CHAMBER SCREW STAYS

9 T.P.I. SINGLE NUT AT ENDS.	
AT BACK MARK	1 3/8" DIA.
" " "	1 1/2" "
" " "	1 5/8" "
AT TOP IN GIRDERS & IN SIDES	1 3/8" "



THREE 3'-3'-2" LAGGING LUGS
AT EACH SIDE OF BOILERS 5438 & 5439
BOLT HOLE TO BE PUNCHED IN
BLANK FLANGE

RILEY BROS (BOILERMAKERS) LTD.
STOCKTON ON TEES.



HEATING SURFACE	975 sq ft
GRATE AREA	34.3 sq ft
FIREBARS	5-6 LONG

30/4/24

30/4/24

30/4/24

Messrs Riley Bros Ltd

Bolton Nos 5531
5532

for

Thos Roper S. B. Co Ltd

{ S.S. 545
" 546

Working Pressure 100 lbs.

5531

No. 6391
LLOYD'S TEST
200 lbs.
W.P. 100
11.9.24 - WM

S.S. Redpool
Middlebrough
Sht No. 12098

5532

No. 6401
LLOYD'S TEST
200 lbs.
W.P. 100
6.10.24 - WM

"Drakepool"

S.S.
MDB. RPT. No. 12110

See Builders No 5436

Mdb Rpt No 11555

REMAIN

W1155-0097



© 2020

Lloyd's Register
Foundation