

PRINCIPAL DIMENSIONS.

LENGTH B.P.	389'0"
BREADTH EX.	56'0"
" MLD.	55'8 1/2"
DEPTH MLD. UPPER DK.	33'10"
" " 2ND DK.	25'4"
DEPTH TO LENGTH	11'5"

MIDSHIP SECTION.

55. N° 573.

COMPLETE SUPERSTRUCTURE TYPE.

LLOYDS 100A1. CLASS.

Scale 1/2" = 1 Foot.

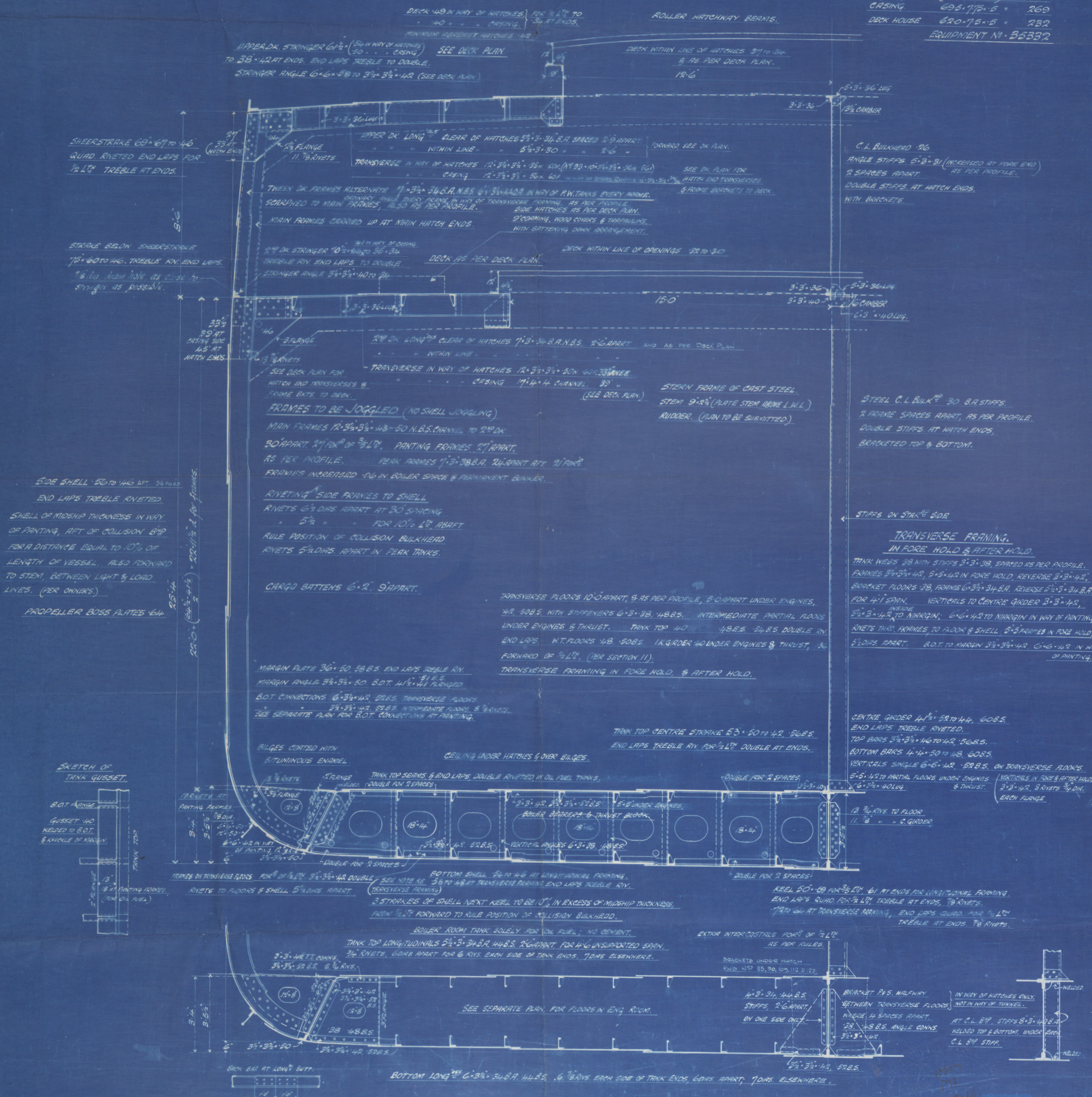
WITH A FREEBOARD CORRESPONDING TO
A COMPLETE SUPERSTRUCTURE VESSEL,
HAVING A TONNAGE OPENING.

NUMERALS.

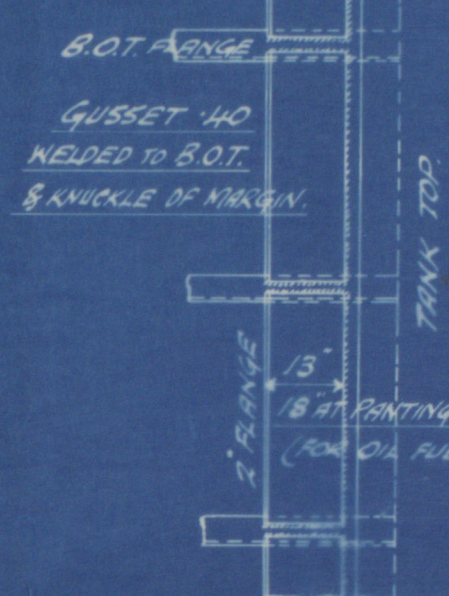
L.O. = 389 (25'33" + 8'0") = 389.3333 = 12966.
L(B+D) = 389 (55'7 1/2" + 25'33") = 34636.

EQUIPMENT NUMERALS.

L(B+D) = 389 (55'7 1/2" + 25'33") = 34831.
CASING 695.715 = 269
DECK HOUSE 620.75 = 232
EQUIPMENT N° 35332



SKETCH OF TANK GUSSET.



✓ W.S. 110 X

SUNDERLAND

W1153-0068

Messrs. J. L. Thompson & Sons, Ltd.

No 573.

"St Helena" Sld 31859

Midship Section.
(as built)



~~PLANS TRANSFERRED~~
~~TO SISTER VESSEL~~

RETAIN



© 2020

Lloyd's Register
Foundation