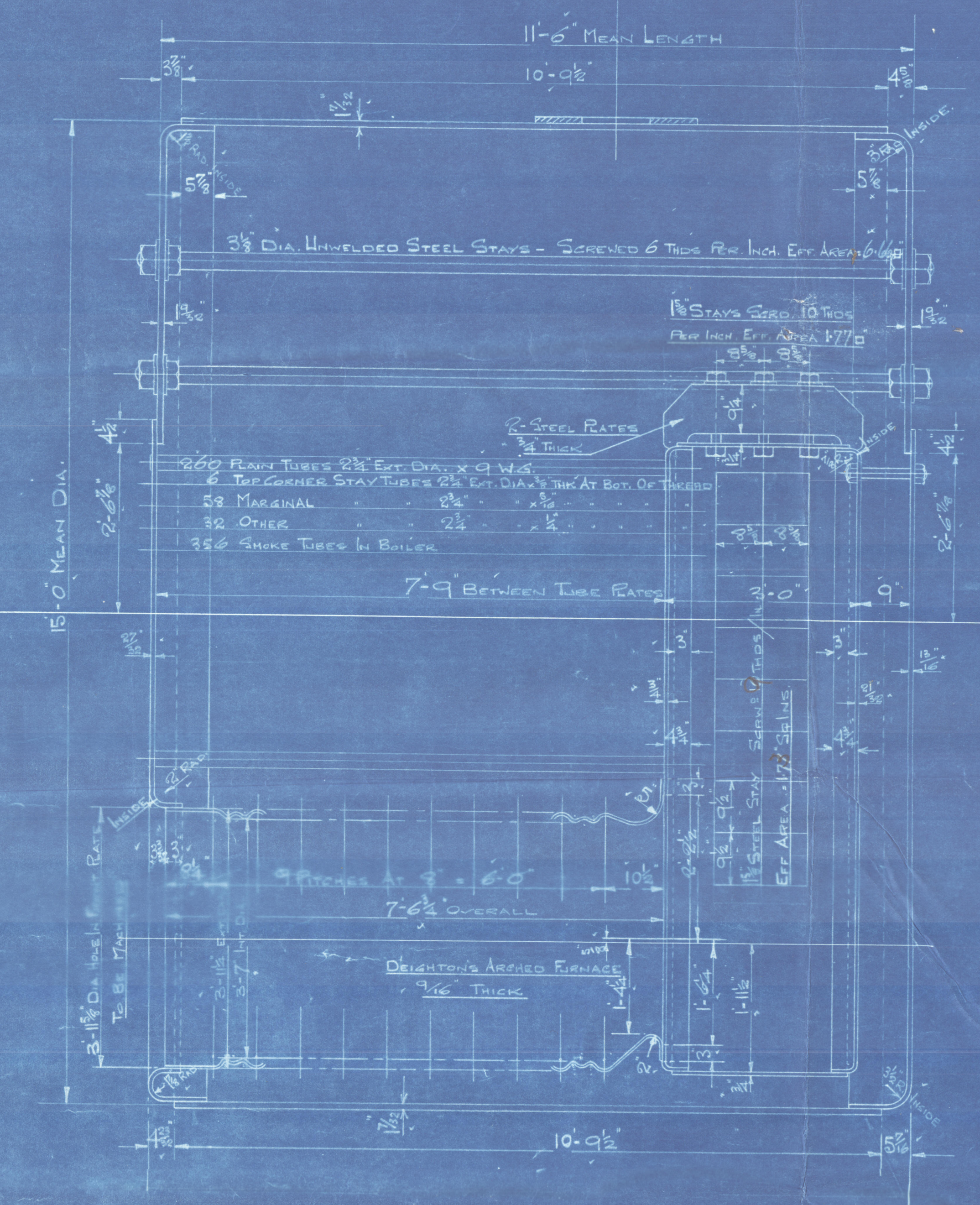
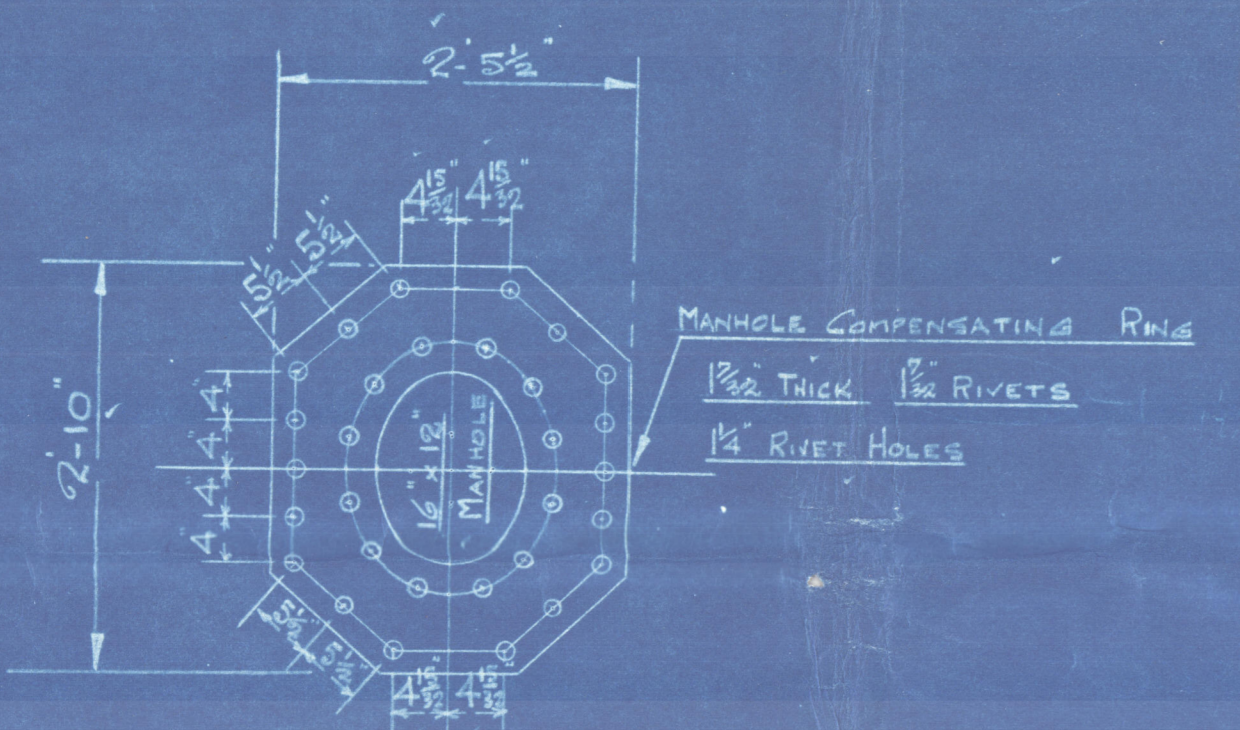
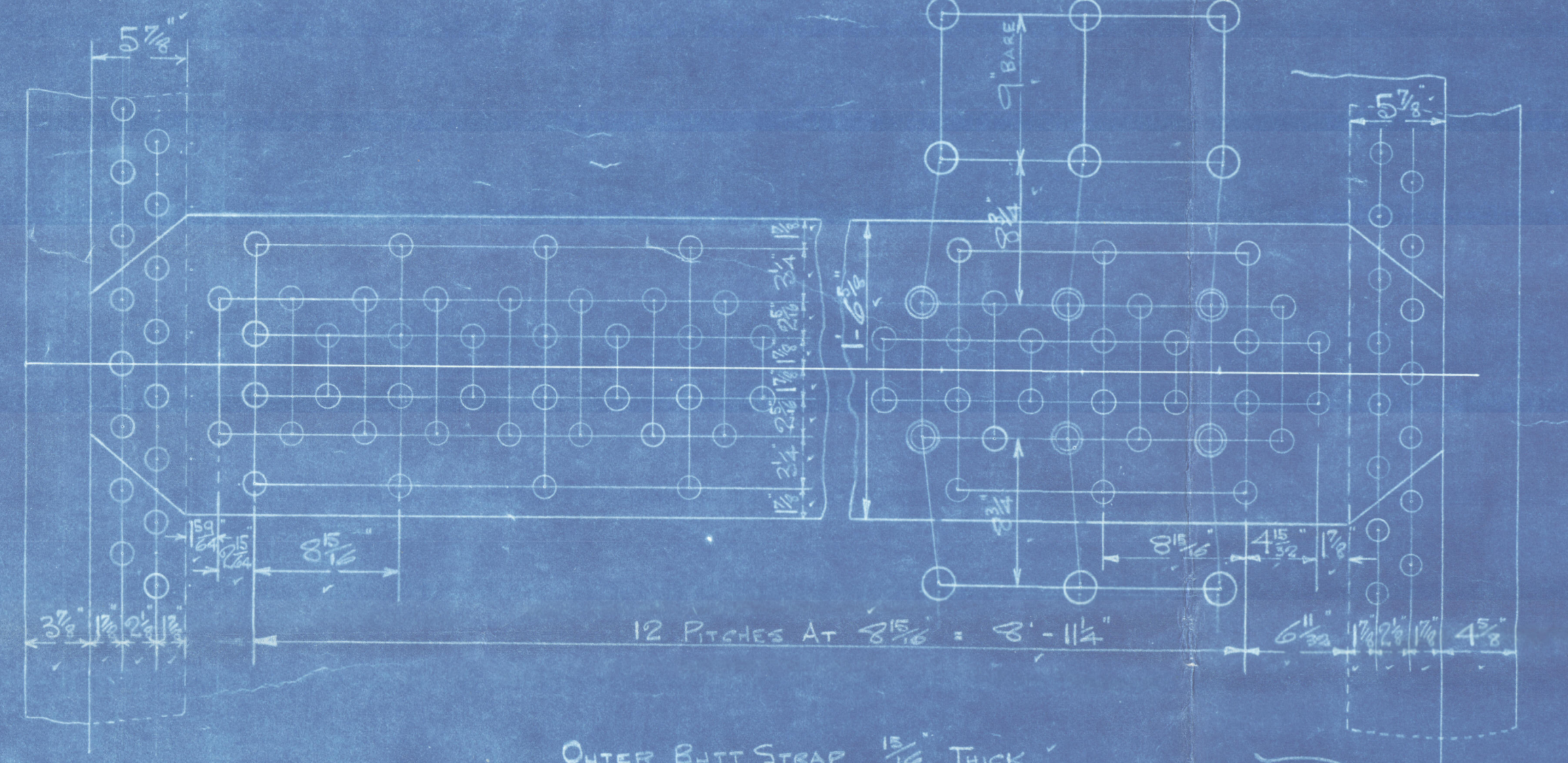
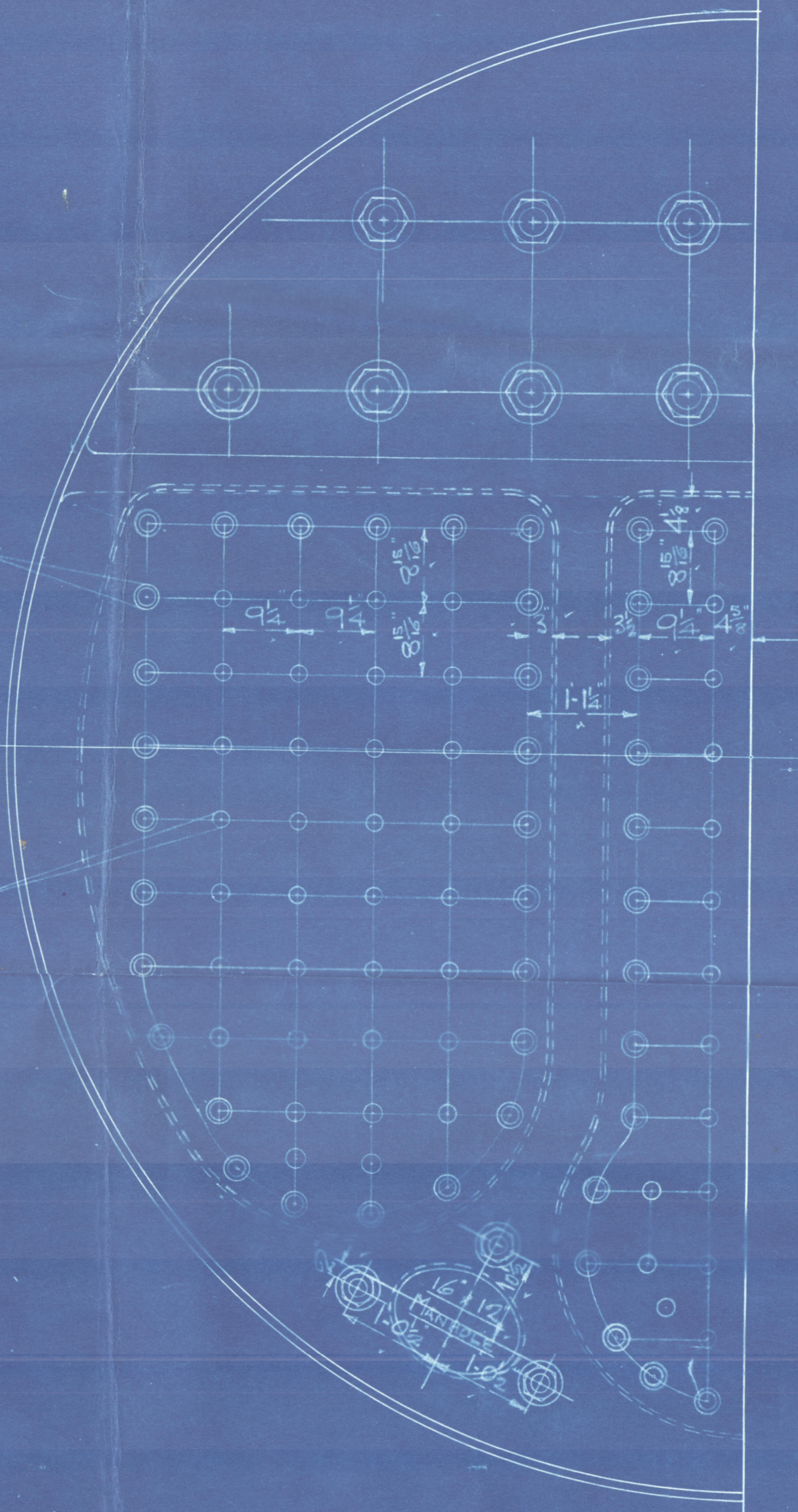


2/2/25



1 1/2" MARGINAL STAYS SORD 9 TUBES/IN. EFF. AREA = 206.0" NUTS ON BOTH ENDS.

1 1/2" INNER STAYS SORD 10 TUBES/IN. EFF. AREA = 177.0" NUTS ON UNIVER. END ONLY



OUTER BUTT STRAP 1 1/2" THICK  
INNER 1/2"  
RATE 1/2 = 68.2  
RIVET 1/2 = 42.1206  
CROWN SEAMS 1/4" RIVET HOLES  
LONGITUD 1/4"  
JOINT  
RATE 1/2 = 68.014  
RIVET 1/2 = 42.1206  
COMBINED 89.27

MATERIAL ALL STEEL EXCEPT TUBES TUBES TO BE OF WROTH IRON

TENSILE STRENGTH OF SHELL PLATES, BUTT STRAPS, GIRDES, & MANHOLE DOUBLERS TO BE 28-32 TONS/0"

TENSILE STRENGTH OF END RATES & COMBUSTION CHAMBER RATES & FURNACES TO BE 26-30 TONS/0"

STEAM SPACE & WATER SPACE LONG<sup>TD</sup> STAYS TO BE 28-32 TONS/0" TENSILE STRENGTH

COMBUSTION CHAMBER SORDED STAYS TO BE 26-30 TONS/0" TENSILE STRENGTH

COMPENSATING PLATES OR SADDLES WILL BE FITTED UNDER STOP VALVES IF OPENING FOR THESE EXCEED 5 1/8" DIA.

HEATING SURFACE	
ONE BOILER	THREE BOILERS
TUBES = 1986.50 Sq. Ft.	TUBES = 5959.50 Sq. Ft.
OTHER = 468.5 "	OTHER = 1357.5 "
TOTAL = 2455.0 "	TOTAL = 7317.0 "
GRATE SURFACE = 59.5	178.5 Sq. Ft.

MAIN BOILERS 3 - OFF  
SCALE 3/4" = 1 FOOT

ENG N° 413

To Pass Lloyd's Survey For 180 LBS W.P.

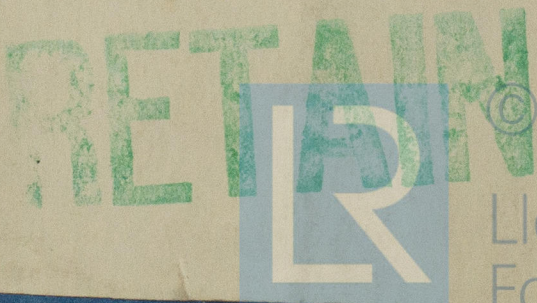
Supplied at time 990407  
Approved 10/7/24  
Worm 14/24/25  
20/2/25



Maui Berles  
Rankin + Blackmore & Co  
N.P. 180th

Duplicate of Hair No 407

S/S "Newbury"  
Greenock Ref No 18650



© 2020

Lloyd's Register  
Foundation

W1152-0039