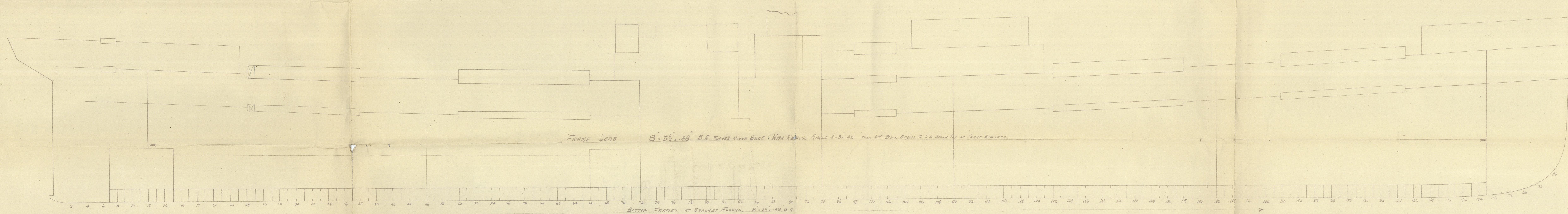


4/7/17

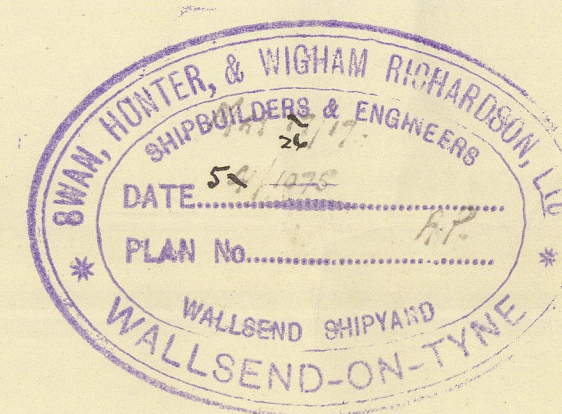
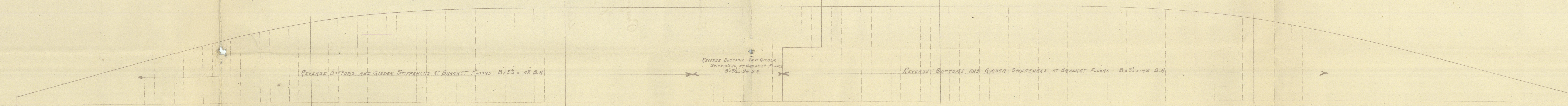
# S.S. No 1075. STANDARD STEAMER.

400'0 B.P. x 52'0 M<sup>2</sup> x 31'0 M<sup>2</sup>.

SECTION SHOWING PROPOSED MODIFICATION OF SCANTLING TO UTILIZE  
THE FRAME LEGS OF S.S. 1053, OF BULB ANGLES 8.3½ x 48 (ANOTHER ARE 54 x 54)  
SCALE 1/8" = 1 FOOT.



## PLAN AT TANK TOP.





Swan, Hunter Wigham  
Richardson L<sup>d</sup>

No 1075.

Profile & modification  
of frame scantlings.

Standard Type B  
McLure

S.S. DACRE CASTLE  
NEWCASTLE ON TYNE.

Report No. 41746.

RETAIN  
ON LANE

W1151 - 0283

1075  
1075



© 2020

Lloyd's Register  
Foundation