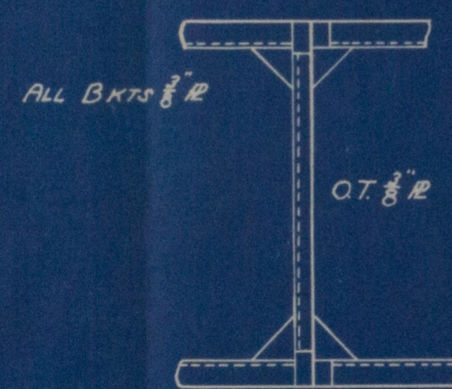
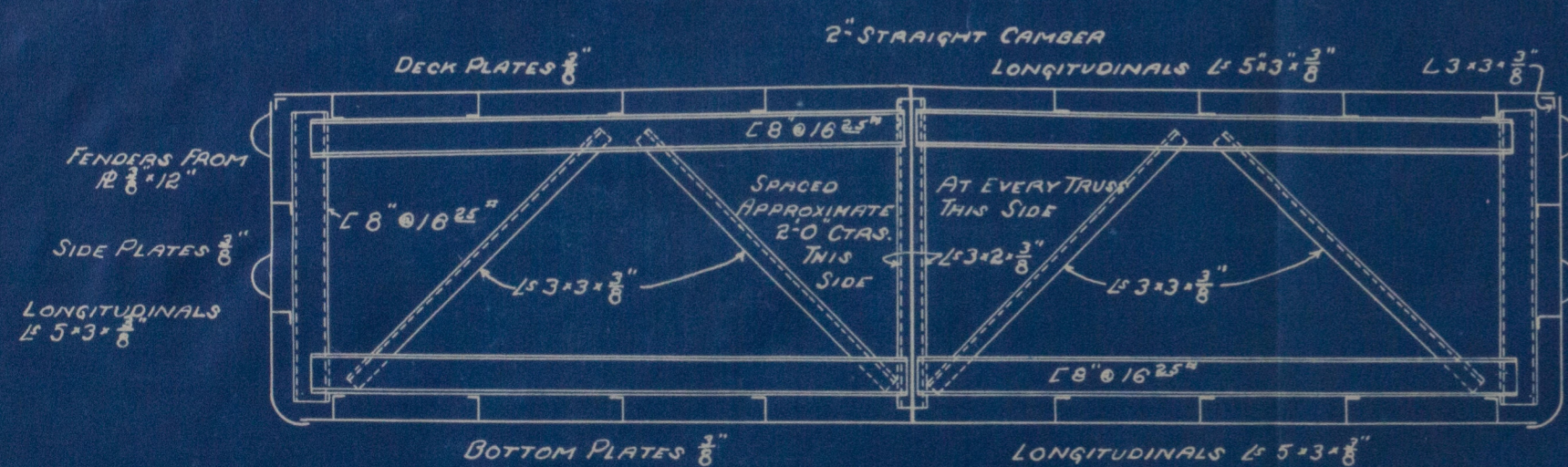


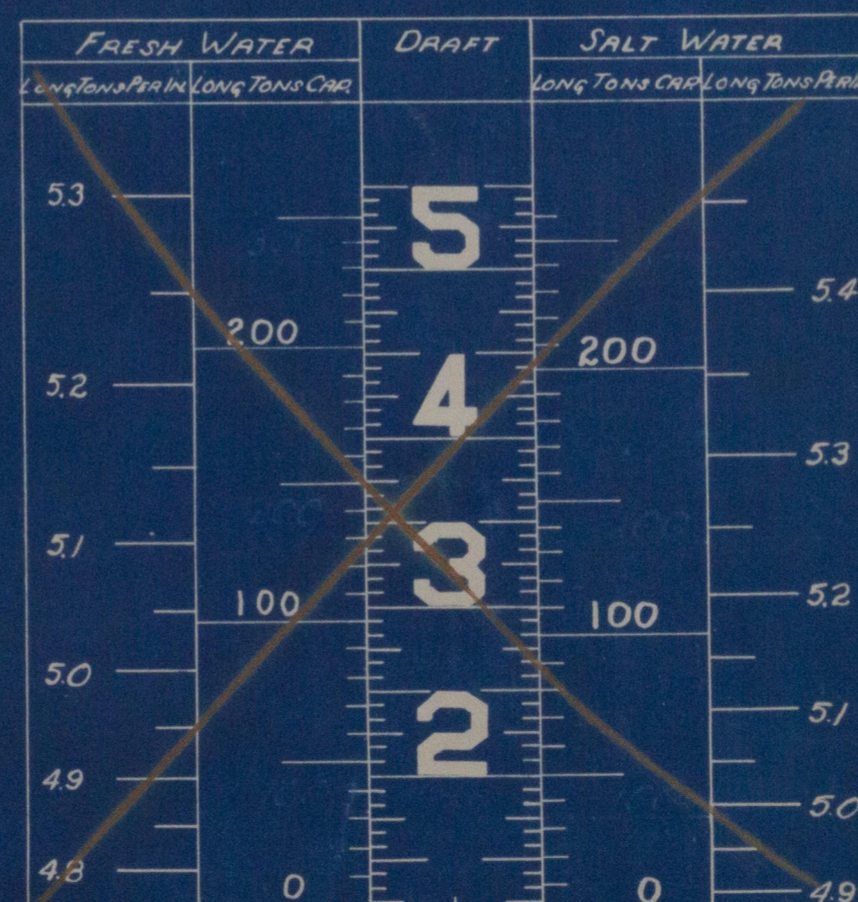
MIDSHIP TRANSVERSE BULKHEAD



SECTION A-A



MIDSHIP SECTION SHOWING TRANSVERSE TRUSS LOOK FWD.



CAPACITY CHART

Class A-
"Barge to be towed"
"Carrying petroleum in bulk"
"For Coastwise Service in the Gulf of Mexico"
"Longitudinal Framing"
"Electrically Welded"

The capacity chart must be done with an assumed draft of 5'-0" and the requirements of the U.S. Coast Guard for the application of the U.S. Coast Guard rules for the construction of the barge must be carried out.

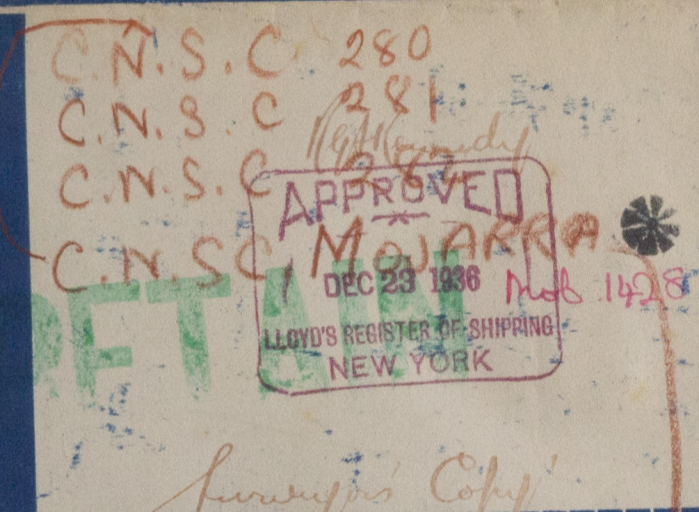
ALTERATIONS

MARK	DESCRIPTION	DATE	APP'D
	PAINTING INSTRUCTIONS CHANGED	9-28-36	

GENERAL NOTES AND REFERENCES

ALL STEEL SHAPES AND PLATES TO CONFORM TO THE REQUIREMENTS OF LLOYD'S REGISTER OF SHIPPING. BARGE TO BE ALL WELDED AND SHIELDED ARC ELECTRODES TO BE USED THROUGHOUT. ALL OIL TIGHT SEAMS, JOINTS, AND BUTTS TO BE WELDED WITH A FULL CONTINUOUS BEAD ON ONE SIDE AND A LIGHT CONTINUOUS BEAD ON THE OPPOSITE SIDE. ALL STRUCTURAL JOINTS ARE TO BE WELDED AS SHOWN ON DETAIL PLANS. PAINTING: INTERIOR OF ALL TANKS AND BOTH RAKES: ONE COAT BOILED LINSEED OIL. EXTERIOR UP TO 1'-6" WATER LINE: TWO COATS DARE PLATE PRIMER, TWO COATS ANTI-CORROSIVE, ONE COAT ANTI-FOULING. EXTERIOR ABOVE LIGHT LOAD LINE: ONE COAT LINSEED OIL, TWO COATS RED LEAD. DRAFT MARKS, PORT AND STARBOARD ON BOTH ENDS AT RAKE BULKHEADS, TO BE LAID OUT, CUT IN, AND PAINTED WHITE. ON BOTH EXPANSION TRUNKS, ON PORT AND STARBOARD SIDES OF EACH, C.N.S.C. 282 TO 287, FOR HULLS #100 TO 135 RESPECTIVELY, TO BE CUT IN AND PAINTED WHITE. UNDER THE NUMBER, PORT SIDE FORWARD, AND STARBOARD AFT, THE WORDS REG NO TO BE CUT IN AND PAINTED WHITE. SIZE OF LETTERS: DRAFT MARKS 6" BARGE NO'S 10" REG. NO. 3"

APPROVAL STAMP



PRINT RECORD

Date of Issue	Owner	Approval Office	Purch'g	Gen. Sup'd	Mold Loft	Plate Shop	Yard Foreman	Weld. Shop	Pattern Shop	Foundry	Pipe Shop	Carp. Shop	Elec. Shop	LLOYD'S	Inspector
12/10															
11/4/36															
10/10/36															
8-17-36															
8-5-36															

BARGE 101'-0" x 22'-6" x 5'-6"

GENERAL AREA

ALABAMA DRY DOCK & SHIPBUILDING CO. MOBILE, ALA.

SCALE 3/8" = 1' DATE August 6, 1936

DRAWN BY: F. J. L. CHECKED BY: TRACED BY: GR. NO. 142 ITEM NO. 142-1 HULL No. 142 PLAN No. 142-1

C.N.S.C. N° 142-1