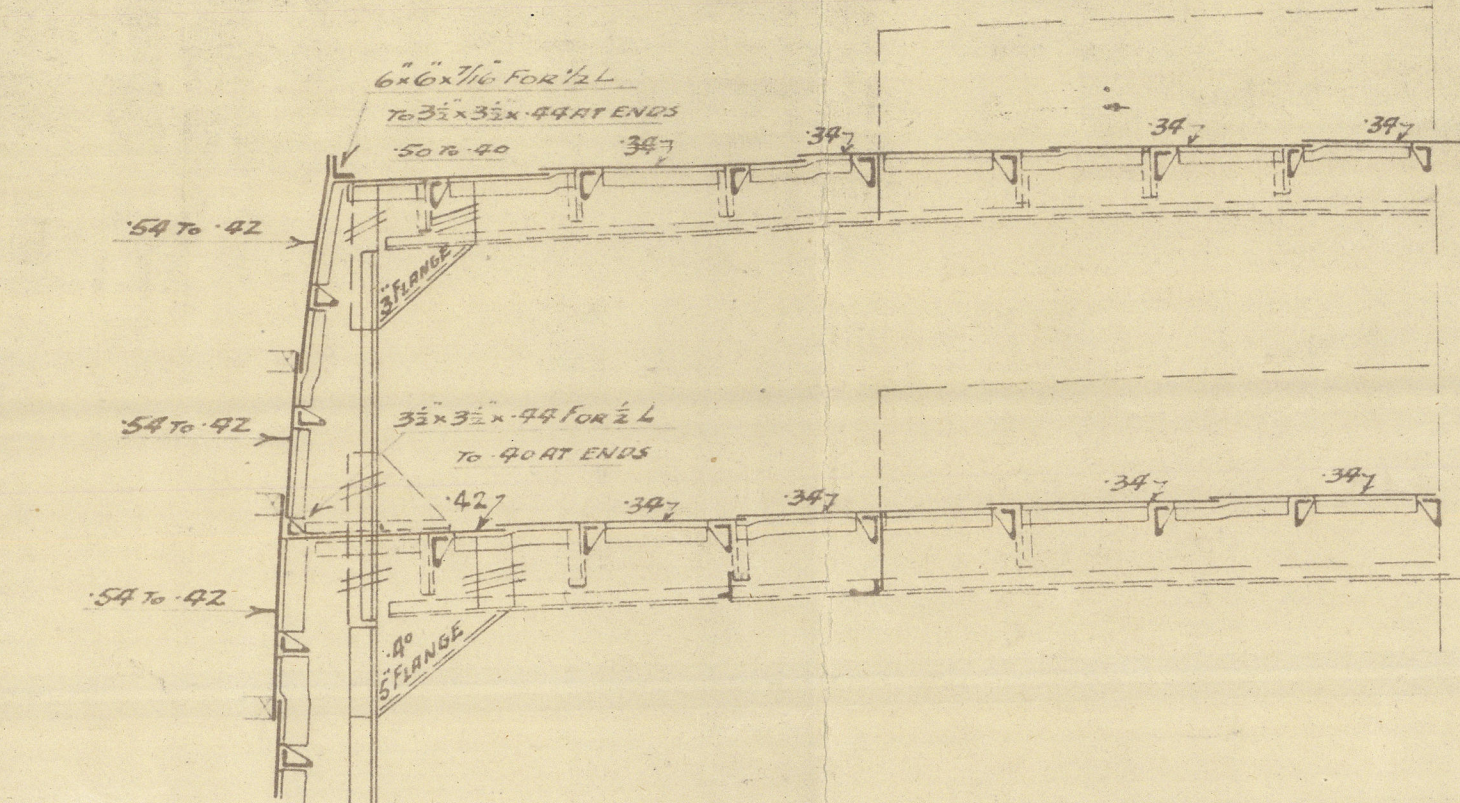


WALKERS LTD. OLD. 1921.
S.S. ECHU
Built By

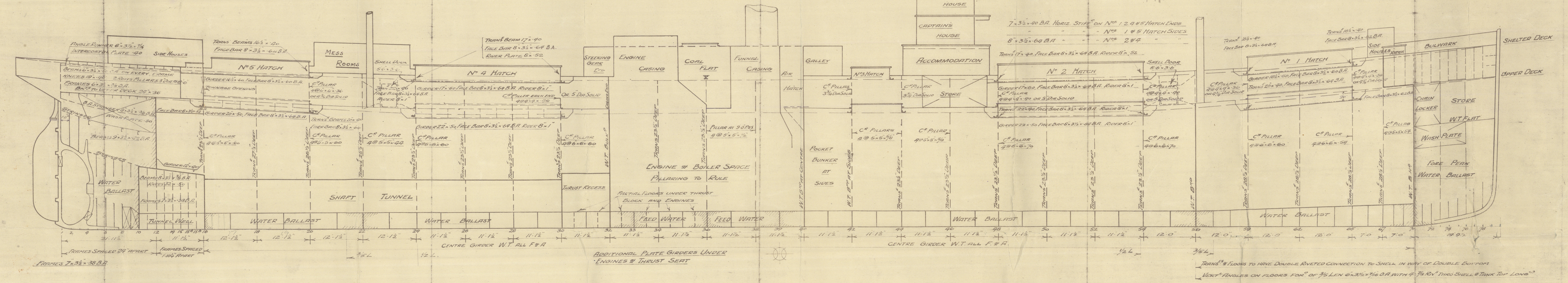
SHIPS N^os 7 TO 10, 35, 36, 37, AND 39 TO 46.
COMMONWEALTH STANDARD STEAMERS
PROFILE & DECK PLANS
SHELTER DECK STEAMERS 331'-0" x 47'-9" x 26'-1" TO UPPER DECK

ISHERWOOD SYSTEM PATENT



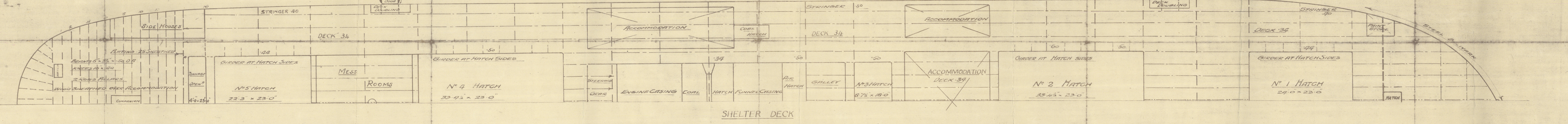
Equipment T^o 26528

2 Bower Anchors	stockless	48% cwt's
1 Stream	ex-stock	41 1/2 "
1 Kedg		13 "
270 fathoms of 2" steel chain cable	(see fathoms War Measure)	5 1/2 "
90	4 1/2 Stream wire	
180	4" Steel wire line-line	
2 of 90	7 Manila hawser or 2 1/2" Steel wire	
2 of 90	7	2 1/2 "



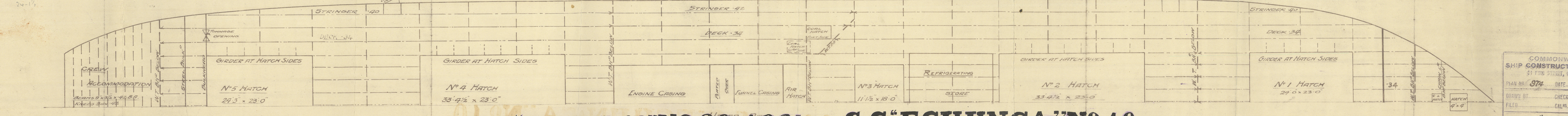
NOTE - LONGITUDINALS AT HATCH SIDES TO SCARPH 3'-0" ON TO HATCHES

SHELTER DECK LONGITUDINALS 7'-3 1/2" x 34 B.A.



NOTE LONGITUDINALS AT HATCH SIDES TO SCARPH 3'-0" ON TO HATCHES

UPPER DECK LONGITUDINALS 7'-3 1/2" x 34 B.A.



S.S. ECHUCA N^o 39. 1921, S.S. ECHUNGA N^o 40.
Built By
WALKERS LTD, OLD. 1922.

COMMONWEALTH
SHIP CONSTRUCTION BRANCH
61 FINE STREET, MELBOURNE.

PLAN NO. 374 DATE 29/1/21

DRAWN BY: CHECKED BY: ALL

FILED: CALMS

COPY FOR: 1/15/21

NO. 897 DATE 1/15/21

Walkers Ltd.

39+40.



"Echuca"

M.N. "MAREEBA"

Bsb. 1313

"Echunga" Bbn 1352.

Profile of Deck.

W/S 96

RETAIN

R

© 2021

Lloyd's Register
WFL48 - 0094
Foundation