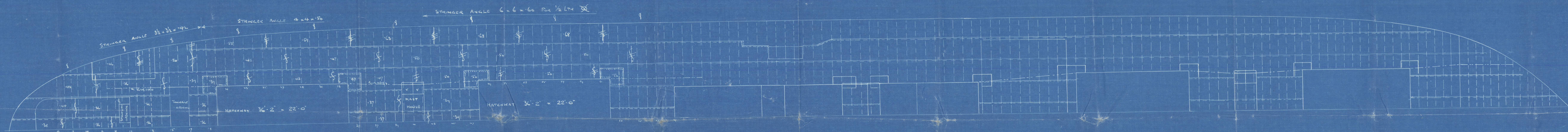


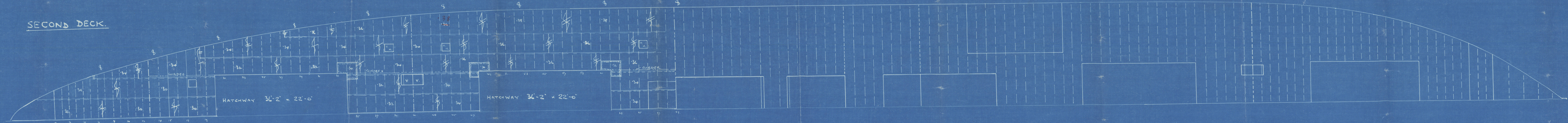
31.7.36

# DECKS N° 275.-273

## UPPER DECK.



## SECOND DECK.



31.7.36



W1147-0152


SUNDERLAND

Messrs. Barham & Sons, Ltd

S.S. No. 275

Decks



S.S. "Llanashe"   
SUNDERLAND RPT. NO. 31942

S.S. "LLANDAFF"  
SUNDERLAND RPT. NO. 32092



© 2020

Lloyd's Register