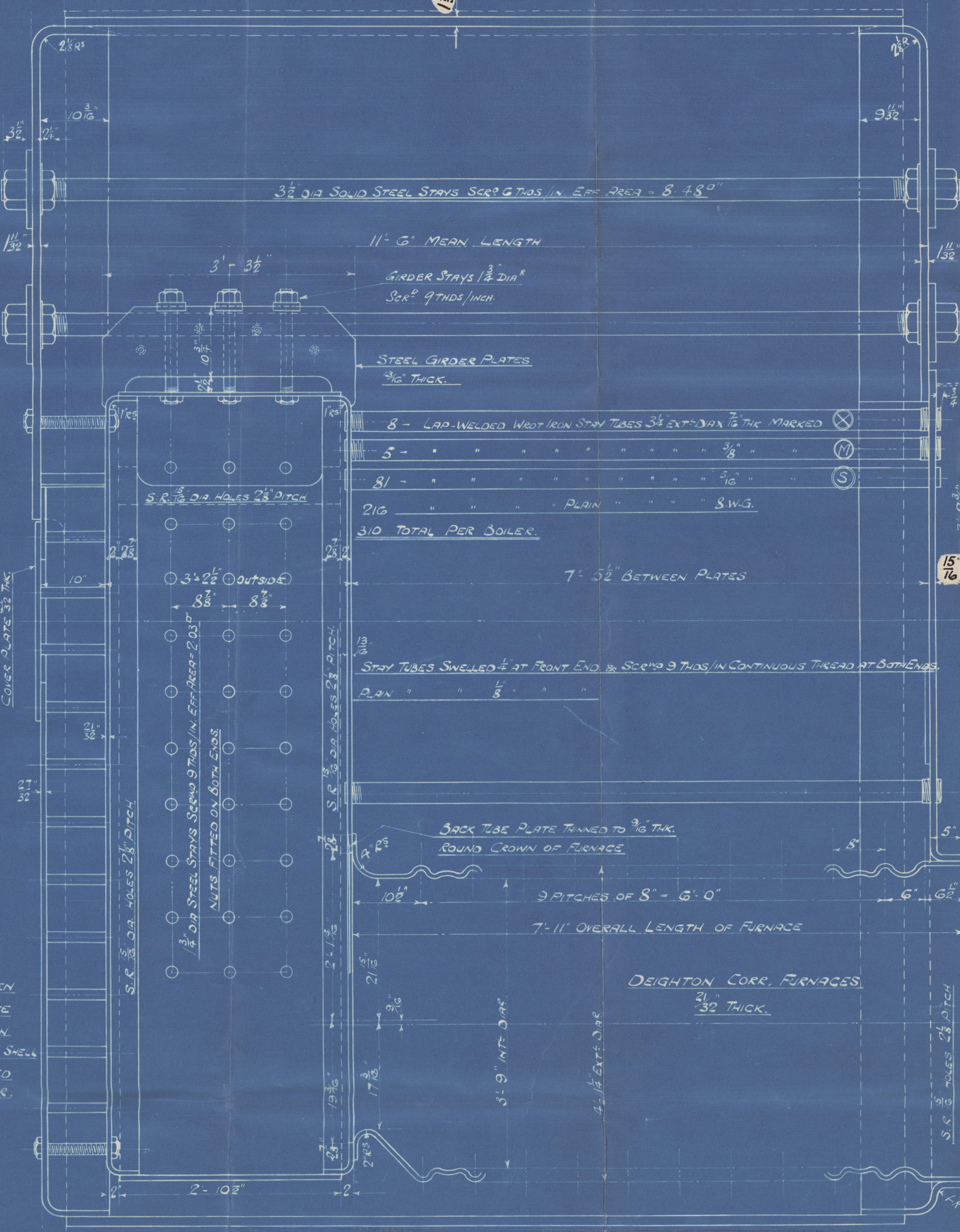
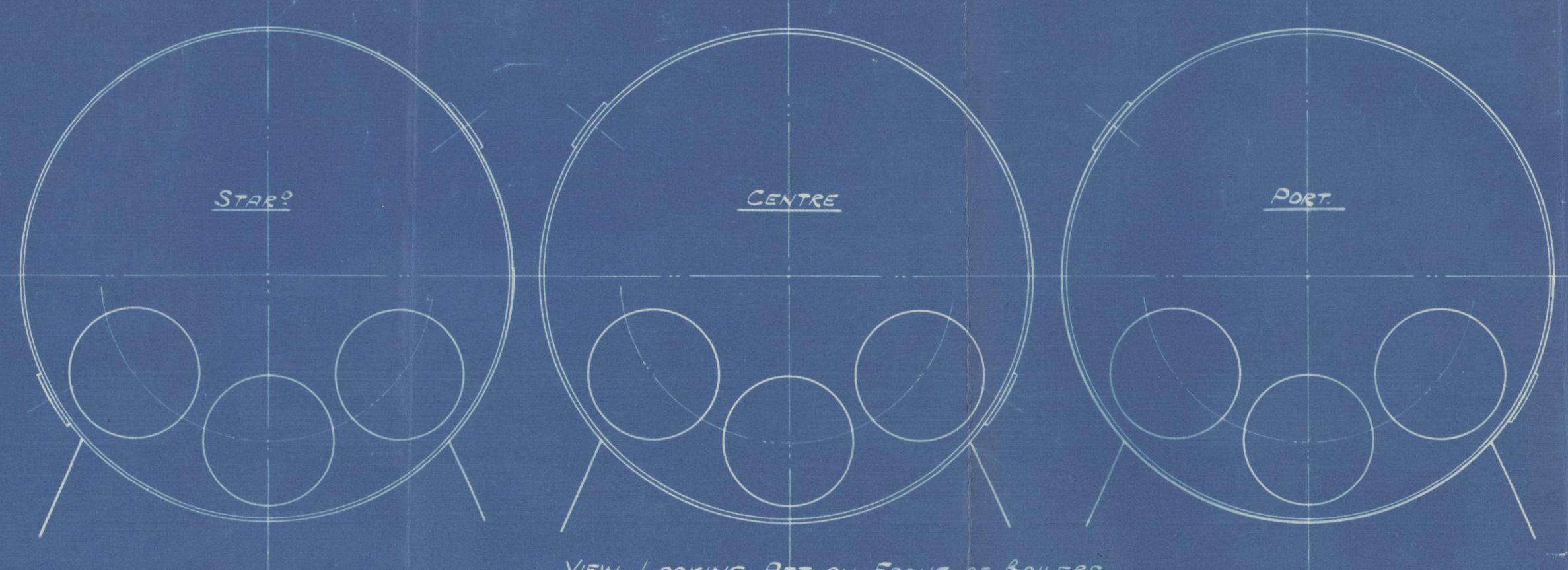
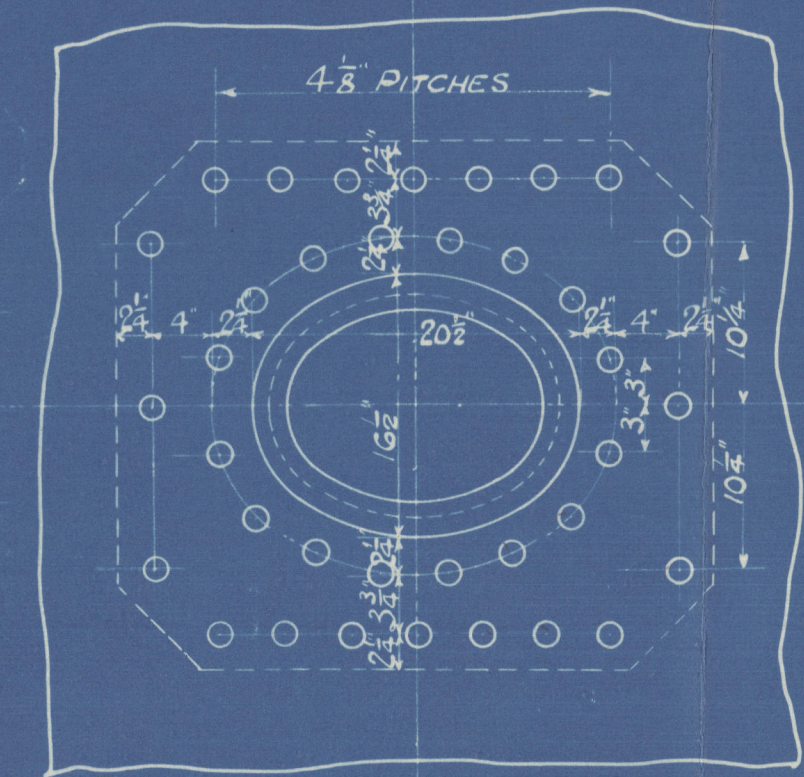


4/1/29

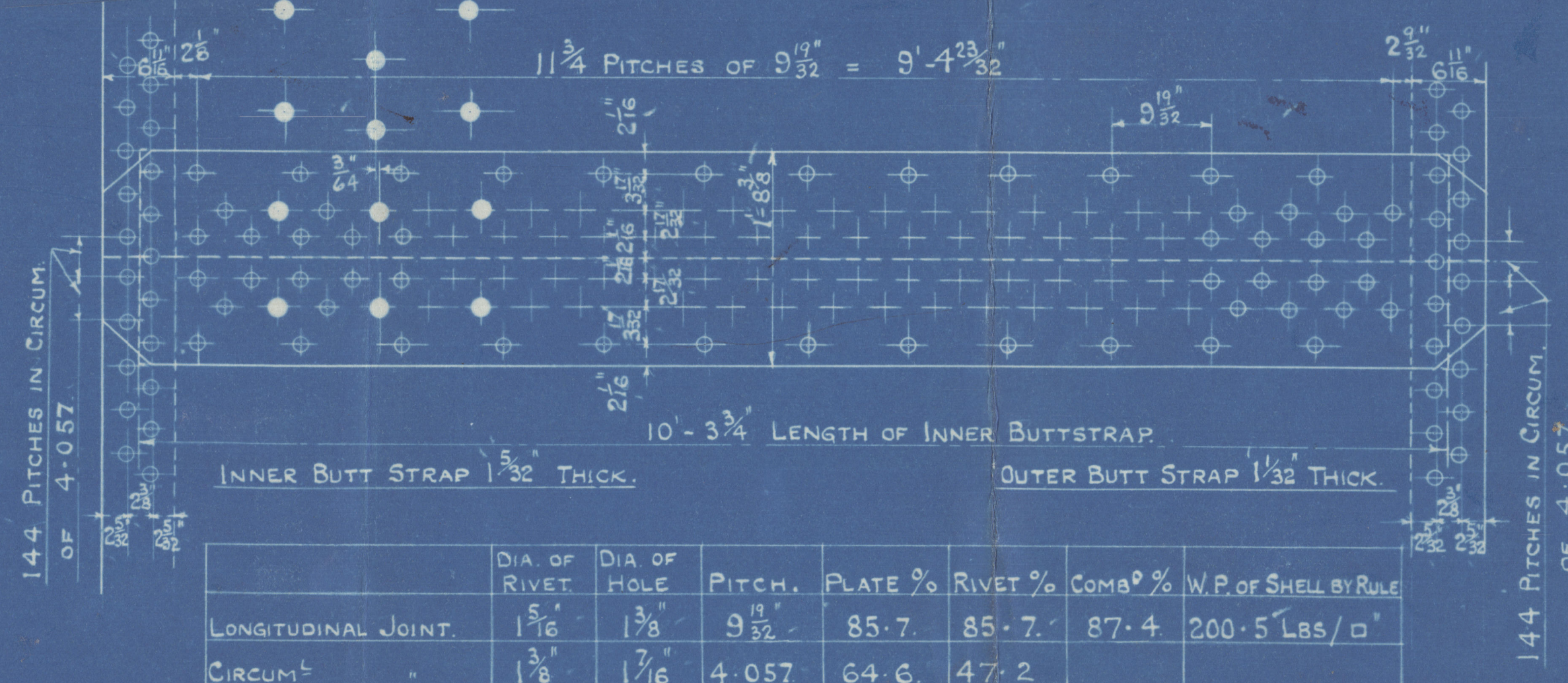


ALL PLATES, STAYS & RIVETS OF STEEL. MARTIN MILD STEEL  
TUBES - LAMINATED IRON  
LONG JOINT - DOUBLE BUTT STRAPS RIVETED  
CIRC - RIVETED  
WORKING PRESSURE - 200 LBS PER SQ INCH  
TEST " - 350 LBS  
ALL HOLES TO BE DRILLED AFTER PLATES ARE SENT & FITTED  
TOGETHER, THEN PLATES TAKEN APART & BURS REMOVED  
RIVETING DONE BY HYDRAULIC PRESSURE WHERE PRACTICABLE.

PART	THICKNESS	TABLE LIMITS
SHELL PLATES	1 1/2"	29-33 TONS/D
INNER BUTT STRAPS	1 1/2"	"
OUTER	1 1/2"	"
STAYS	1 1/2"	"
TOP END PLATES	1 1/2"	26-30 TONS/D
FRONT BOTTOM END	1 1/2"	"
BACK	1 1/2"	"
" TUBE PLATES	1 1/2"	"
G.C. BACKS	1 1/2"	"
WEAPERS PLATES	1 1/2"	"
STAYS	1 1/2"	"
MANHOLE COMPENSATION RING	1 1/2"	"
LONGITUDINAL STAYS	1 1/2"	28-32 TONS/D
COMBUSTION CHAMBER STAYS	1 1/2"	26-30 "
RIVET BARS	1 1/2"	26-30 "

SURFACES, RIVETS ETC.	1 BOILER	3 BOILERS
3/16 TUBES 3 1/2 EXT DIA	186	558
RIVETES	173	519
COMBUSTION CHAMBERS	305	915
TOTAL HS	2445	7335
FIRE BRICKS 5' 6" ONE LENGTH		
GRATE AREA	61.875	185.625
REAR THROUGH TUBES	13.55	40.65
GRATE AREA TUBE REAR 45TH		

CORAL BURNING - NATURAL DRAUGHT



	DIA OF RIVET	DIA OF HOLE	PITCH	PLATE %	RIVET %	COMB %	W.P. OF SHELL BY RULE
LONGITUDINAL JOINT	1 1/2"	1 3/8"	9 1/2"	85.7	85.7	87.4	200.5 LBS/D
CIRCUM	1 1/2"	1 3/8"	4.057	64.6	47.2		

# BOILERS. ENC. NO. 660

15' 6" MEAN DIA. X 11' 6" MEAN LENGTH X 200 LBS/SQ W.P.  
3 OFF FOR EACH ENGINE.

TO PASS LLOYD'S TESTS & REQUIREMENTS.

SCALE 1" = 1' 00"

26th DEC. 1928.

IDRC. NO. 6225

cm.  
4/1/29.

2020



W1146-0050

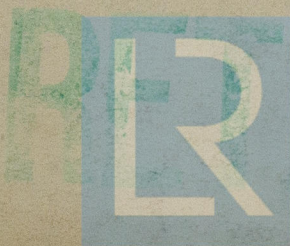
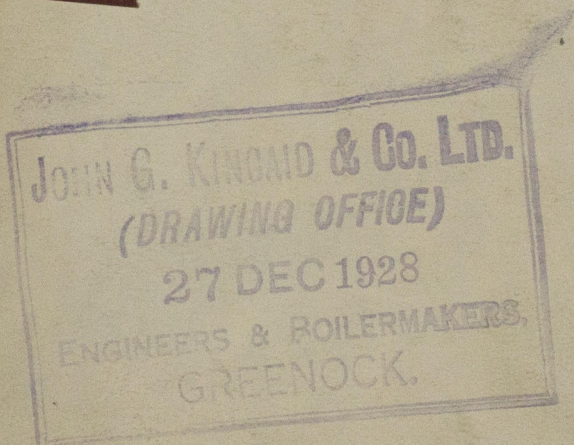
Kuccaido No 660

Man Boulon WP. 200

saumon 8 1/8 409

S. S. Darcoln

Greenock Lock Entry Report N: 19930.



© 2020

Lloyd's Register  
Foundation