

# STEEL BOILERS

SCALE 1 INCH = 1 FOOT.

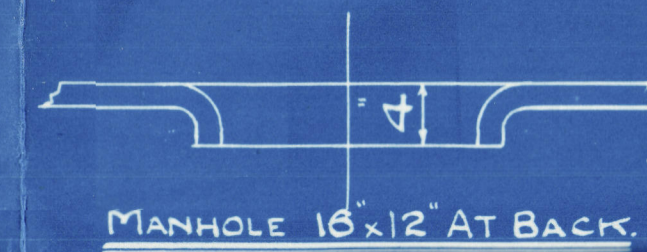
N <sup>o</sup>	DESCRIPTION	MINIMUM TENSILE STRENGTH	LETTER
2	SHELL PLATES	28 1/2 TONS	A.B.
1	FRONT TOP	26	D.
1	" BOTTOM	26	E.
1	BACK TOP	26	F.
1	" BOTTOM	26	G.
1	BACK T.P. CENTRE	26	H.
2	" WINGS	26	I.
1	C.C. WRAPPER CENTRE	26	J.
2	" WINGS	26	K.
1	BACK CENTRE	26	L.
2	" WINGS	26	M.
16	GIRDERS	28	N.
2	SHELL BUTT STRAPS INS.	28 3/4	O.
2	" " OUT.	28 3/4	P.
3	MANHOLE COVERS	26	Q.
3	FURNACES	26	R.
	STEAM SPACE STAYS	28	S.
	SCREWED STAYS	26	T.
	RIVETS	27	U.

APPROVED BY BUREAU VERITAS 17.5.18.  
" " BRITISH CORPORATION 19.5.18.  
" " LLOYDS 23.5.18.

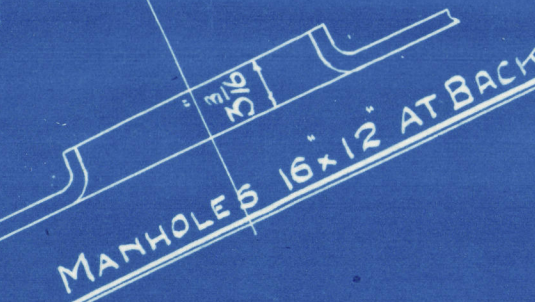
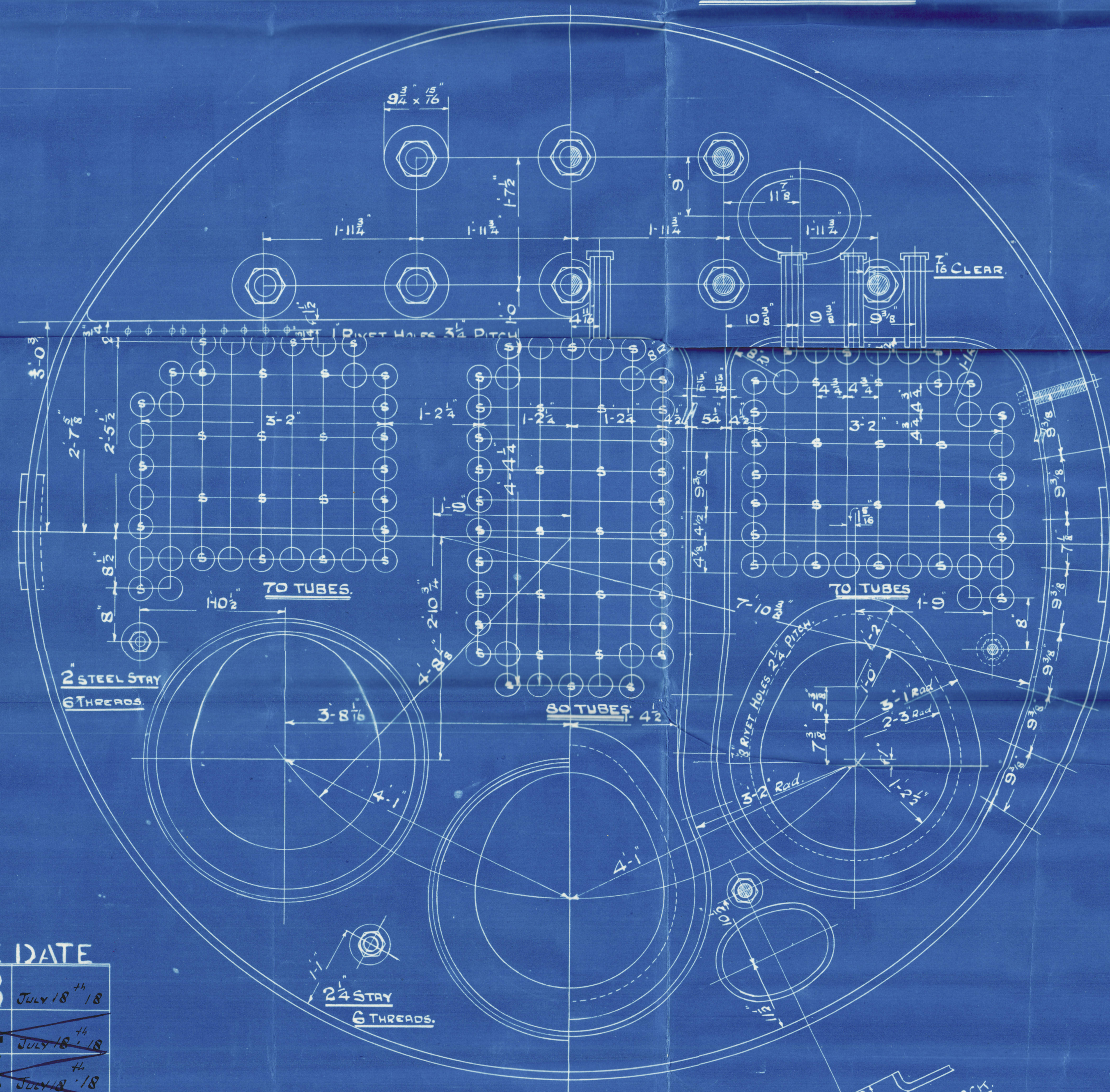
% STRENGTH OF PLATE = 86.0

% STRENGTH OF RIVETS = 86.1

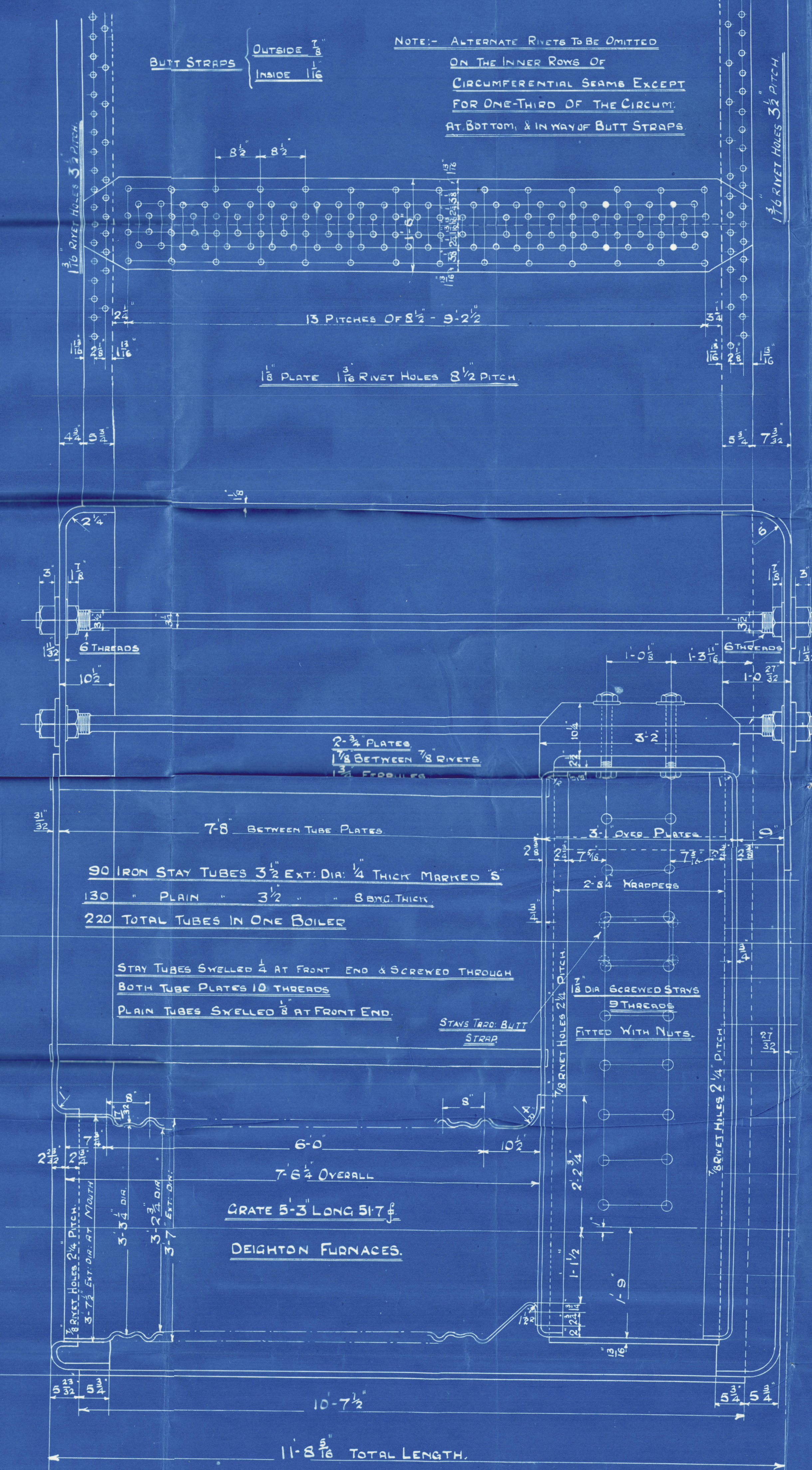
SHELL (LLOYDS)  $22.58 (18-2) \times 86 = 187.1 \text{ LBS.}$   
165.75



MANHOLE 16x12 AT BACK.



MANHOLES 16x12 AT BACK.



BUTT STRAPS  
OUTSIDE 1/8  
INSIDE 1/16

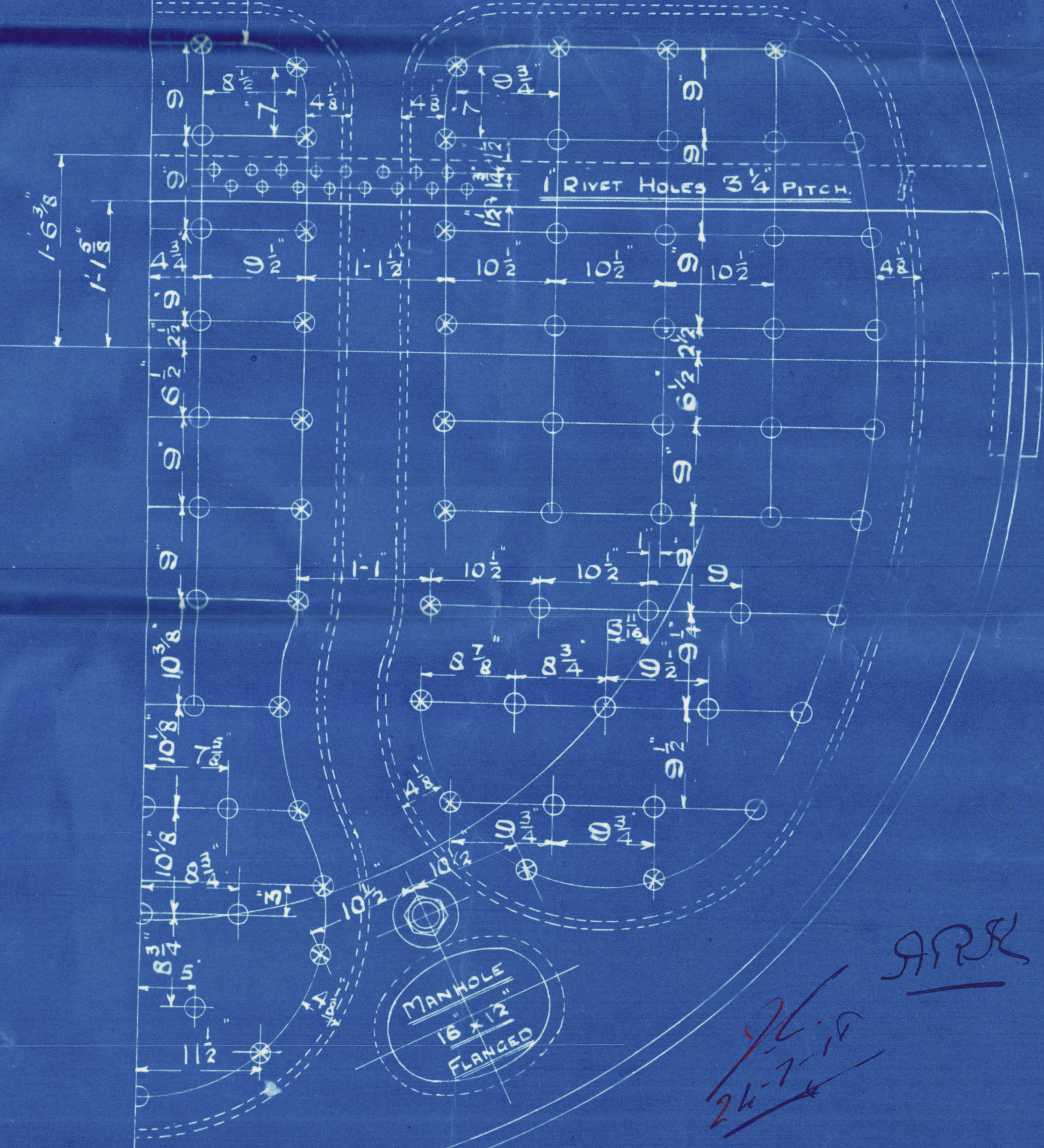
NOTE:- ALTERNATE RIVETS TO BE OMITTED  
ON THE INNER ROWS OF  
CIRCUMFERENTIAL SEAMS EXCEPT  
FOR ONE-THIRD OF THE CIRCUM.  
AT BOTTOM, & IN WAY OF BUTT STRAPS

HEATING SURFACE ON TUBES BETWEEN T. PLATES = 1545 sq. ft.  
ELSEWHERE INCLUDING T. PLATES = 430 sq. ft.  
TOTAL = 1975 sq. ft.

STEAM SPACE = CUB. FT.  
WORKING PRESSURE = 180 LBS. / SQ. IN.  
TEST = 360

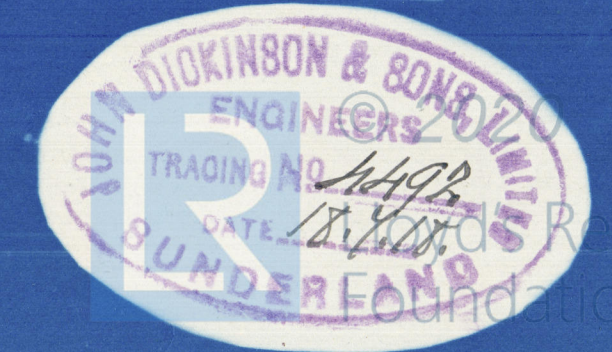
NOTE:- ALL PLATES, STAYS ETC. TO BE OF STEEL. SMOKE TUBES OF IRON.  
TENSILE STRENGTH OF SHELL PLATING TO BE FROM 28 1/2 TO 33 TONS.  
ALL HOLES DRILLED IN PLACE AFTER PLATES ARE BENT

NOTE:- ALL MARGINAL STAYS IN BACKS TO HAVE NUTS ON  
BOTH ENDS. REMAINDER OF SCREWED  
STAYS TO HAVE NUTS ON INNER  
END ONLY & TO PROJECT  
3/4 ON OUTSIDE & TO BE  
CAULKED.



STAYS MARKED THUS O 1/8 DIA 9 THREADS  
" " " 2 1/8 9  
ALL SCREWED STAYS SCREWED INTO PLATE

2 THUS STAR & CENTRE  
1 TO OPP. HAND PORT  
FOR EACH CONTRACT.



WH45-0188

ENGINE DATE	
S43	JULY 18 '18
S44	JULY 18 '18
S45	JULY 18 '18



# SUNDERLAND.

J. DICKINSON & SONS L<sup>TD</sup>

(3) BOILERS. N<sup>o</sup> 843.

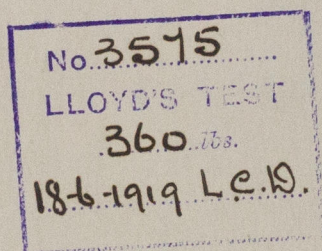
STANDARD. "C" TYPE.

NATURAL DRAUGHT.

W. P. = 180 LBS.  $\square$

W1145-0188

W. BLUMER & CO: S/S N<sup>o</sup> 251



*Kaiwatta*

SUNDERLAND RPT. NO.

27577

RETAIN

© 2020

Lloyd's Register