

W1145-0170

N 5911

NEWCASTLE, 29, COLLINGWOOD BUILDINGS.

LONDON, VICTORIA MANSIONS,
32, VICTORIA ST (THIRD FLOOR)

GLASGOW, 11, BOTHWELL ST

Newburn Steel Works.

Newcastle-on-Tyne. Nov 23rd 1918

Messrs John Dickinson & Son Ltd.

Monkwearmouth

CASH

m 29877

To

John Spencer & Sons Limited.

Steel Manufacturers.

ROLLING MILLS DEPT

TERMS: CASH NETT ON 10TH OF MONTH FOR AMOUNT OF PRECEDING MONTHS INVOICES.

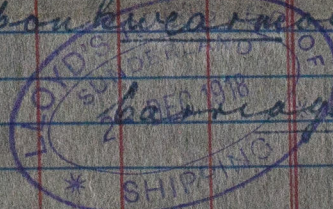
BOILER

WAGON NO	MARK	NO OF SHIP OR BOILER	NUMBER OF PLATES	LENGTH	BREADTH	THICKNESS	CONSECUTIVE NO	CAST NO	TONS	CWT	QRS	PS	PRICE	£	S	D
15607	JH	843	1	14 1/2	4 1/4	3/16	2733	6863	2	14
.	.	.	1	.	R	.	9234	.	2	14	2
.	.	.	2	5	8	2

26 to 30 tons



To Monkwearmouth



freight paid.



© 2020

Lloyd's Register
Foundation