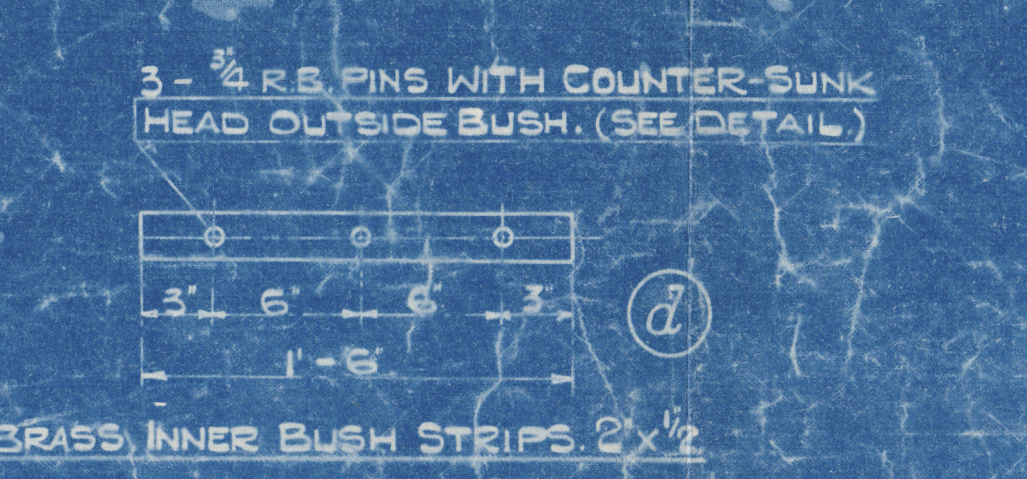
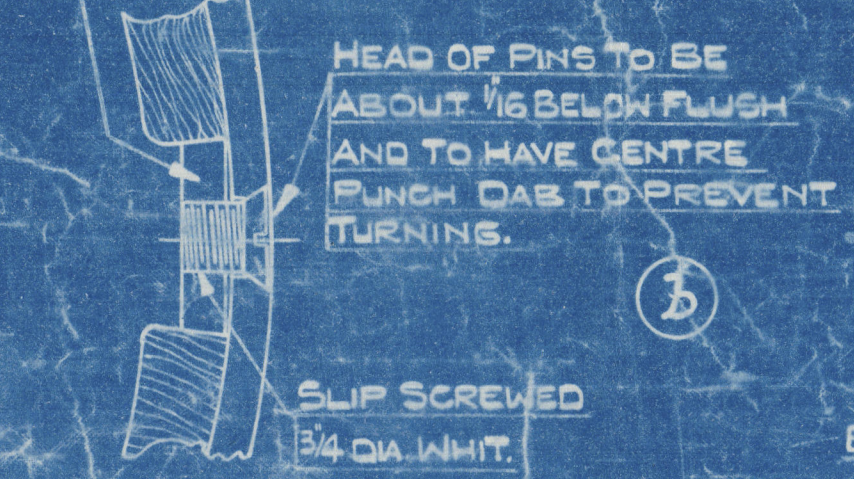
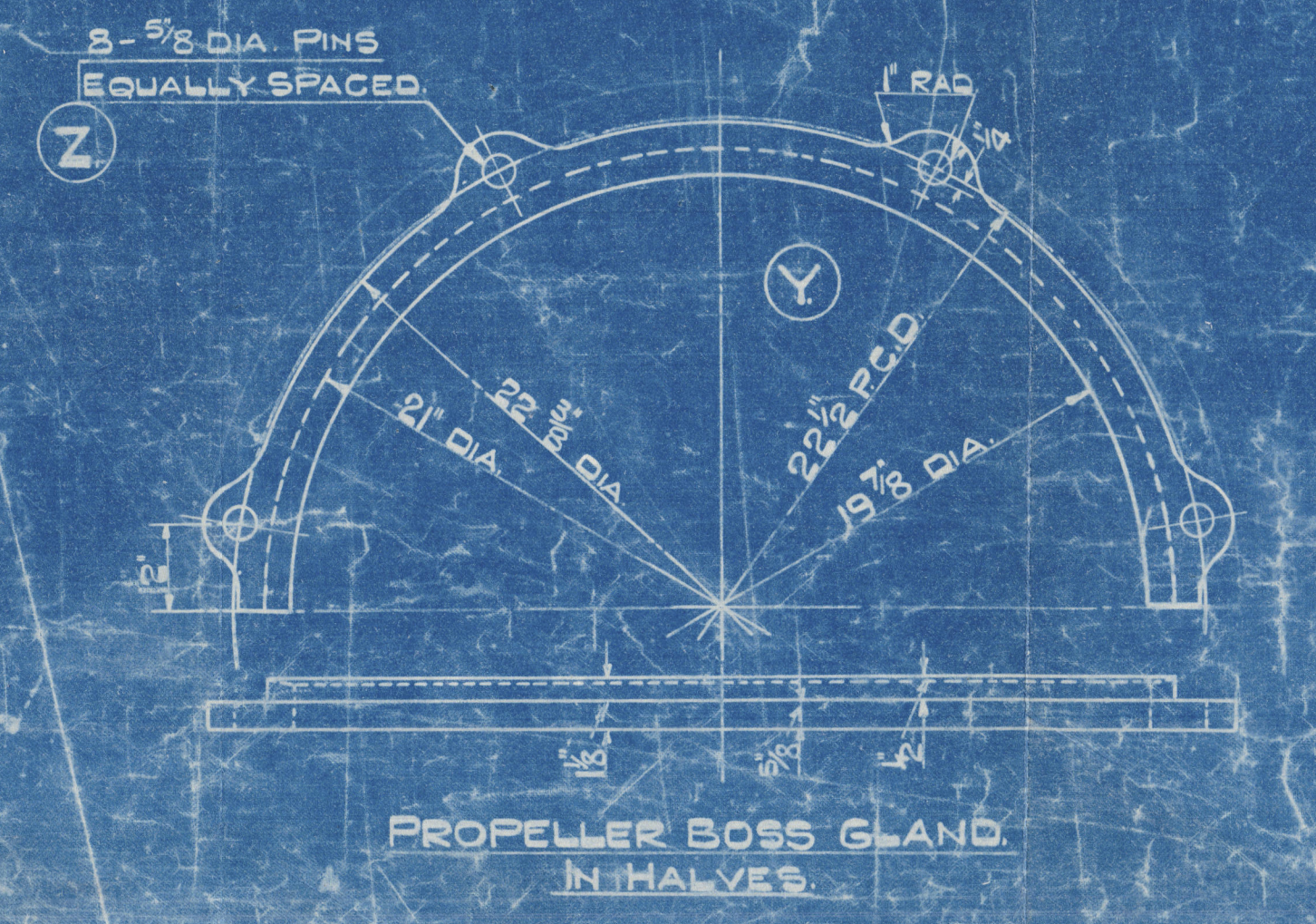
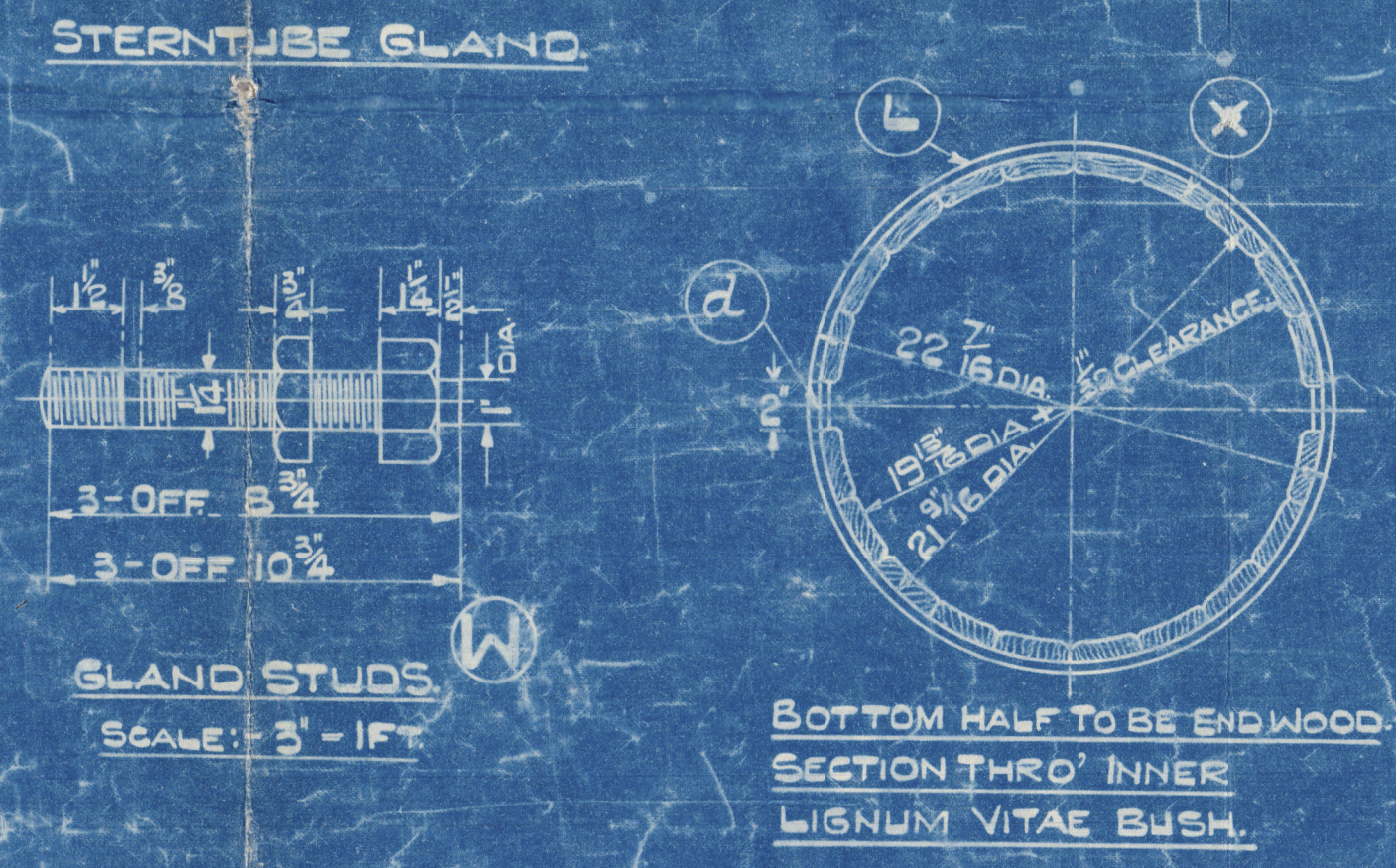
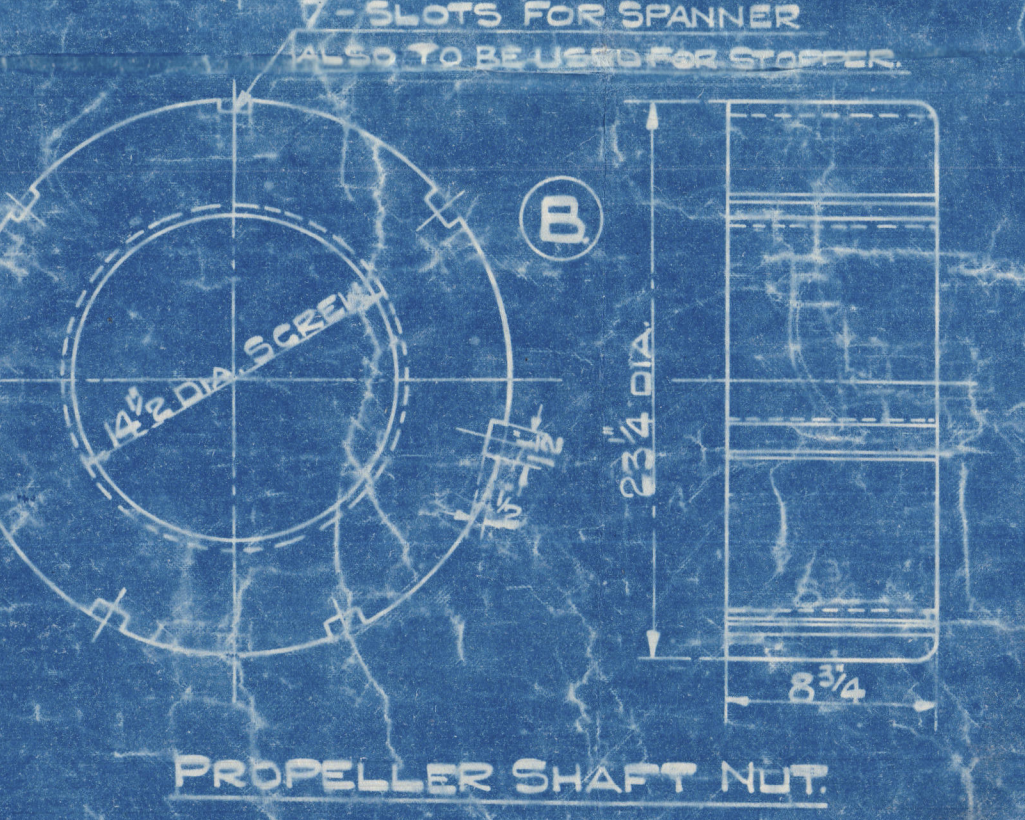
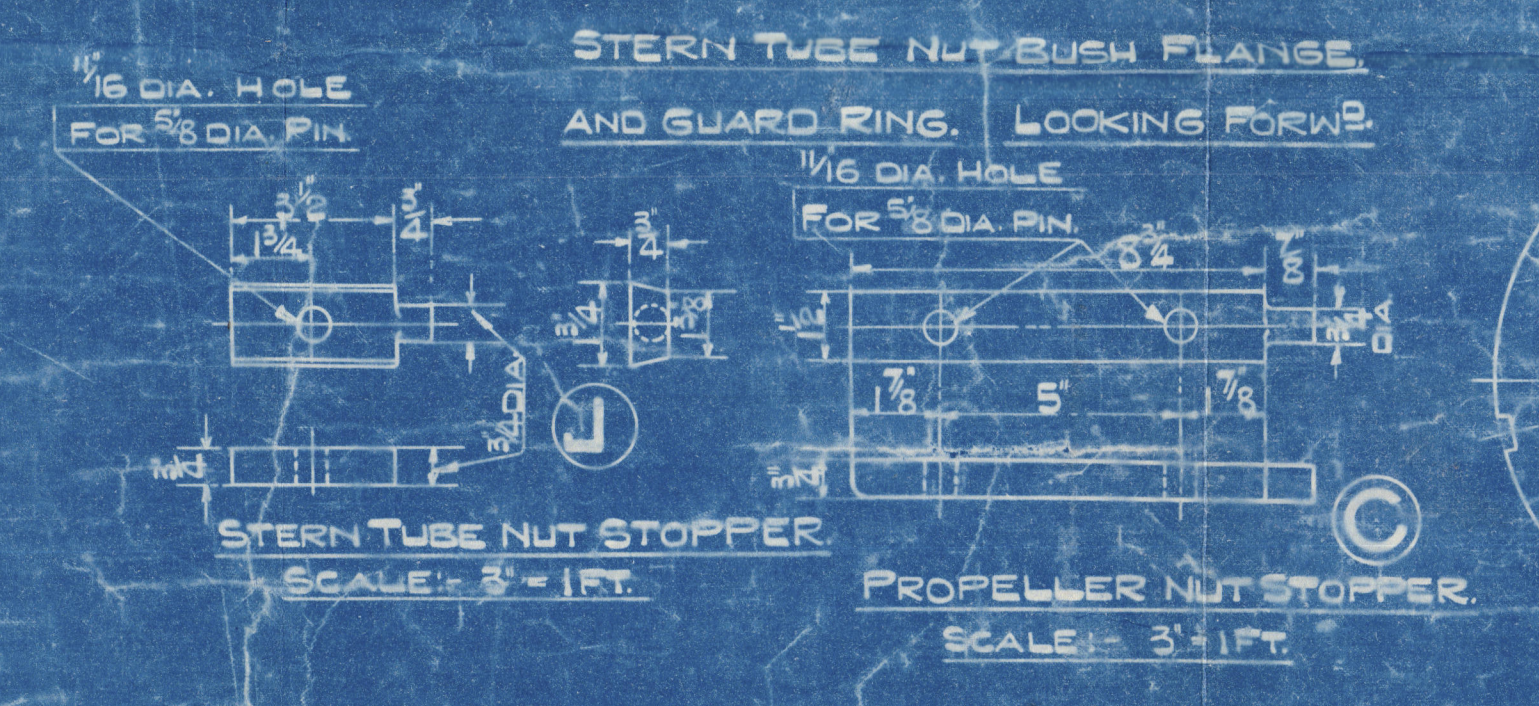
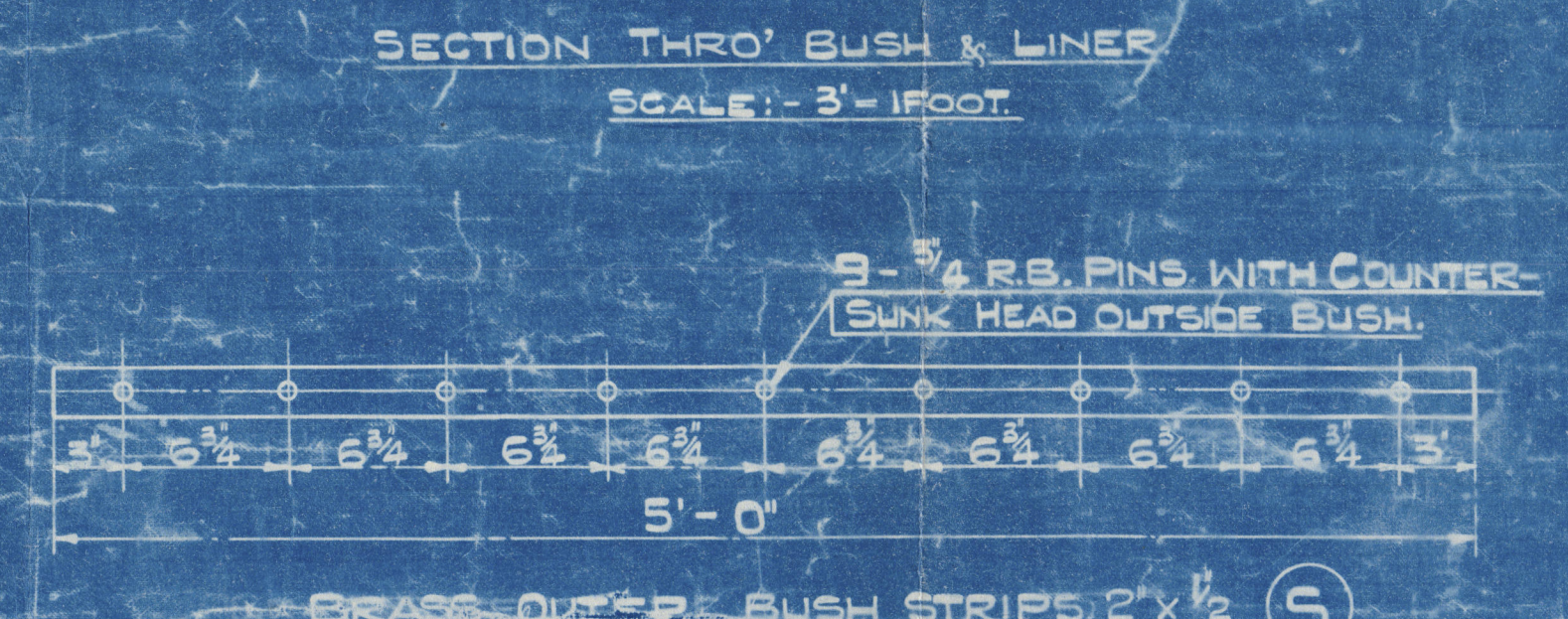
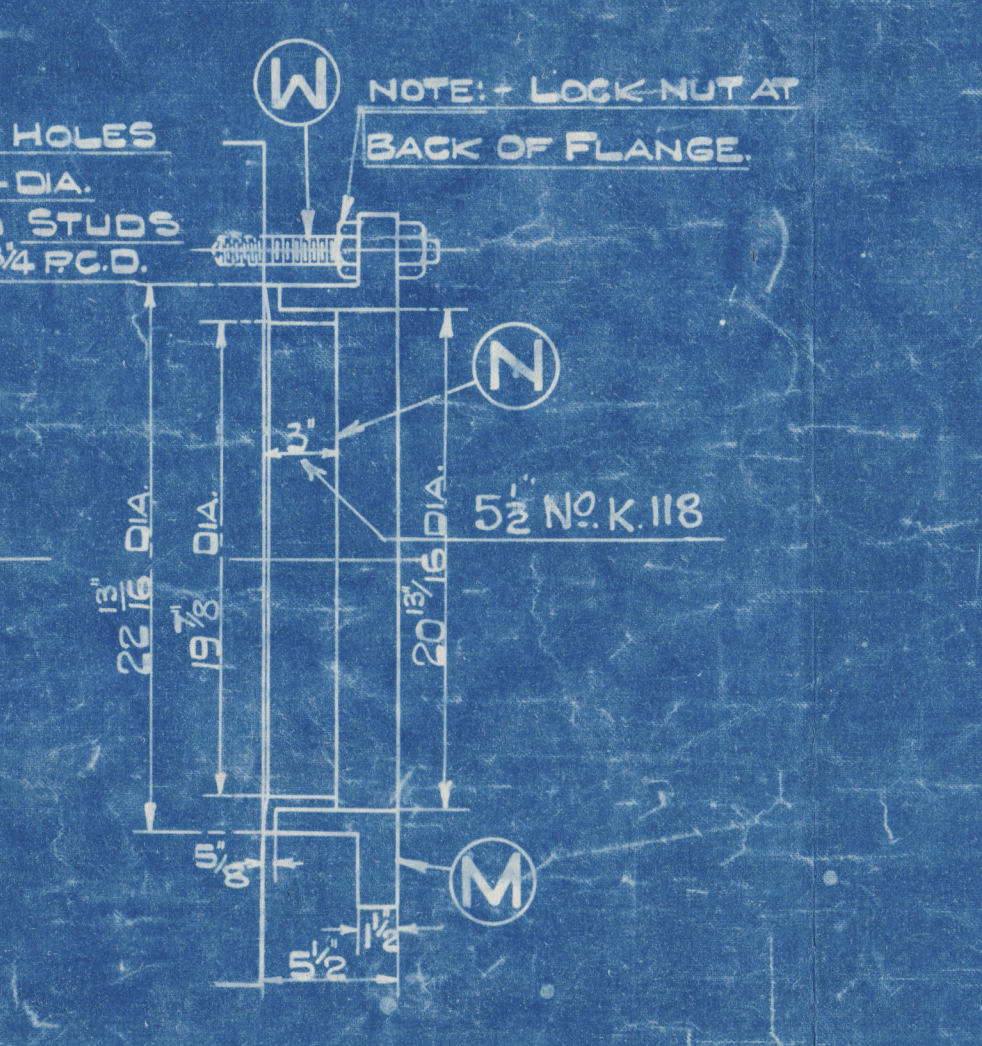
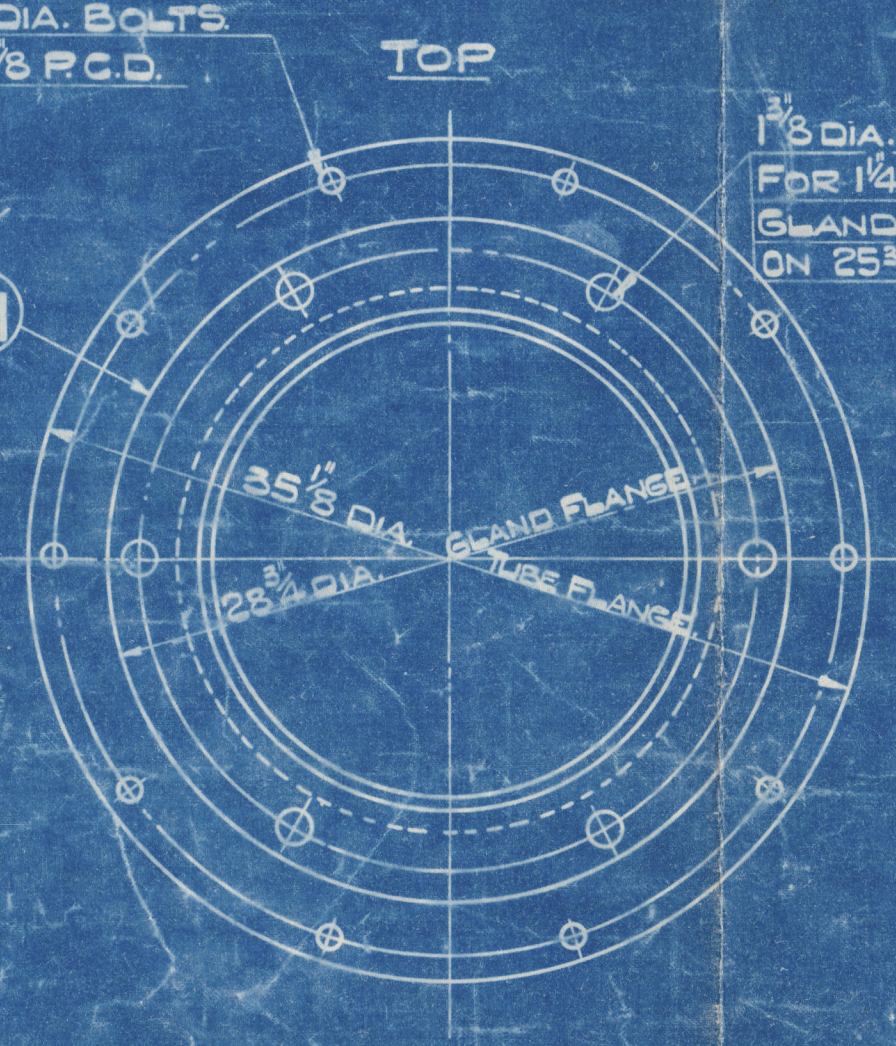
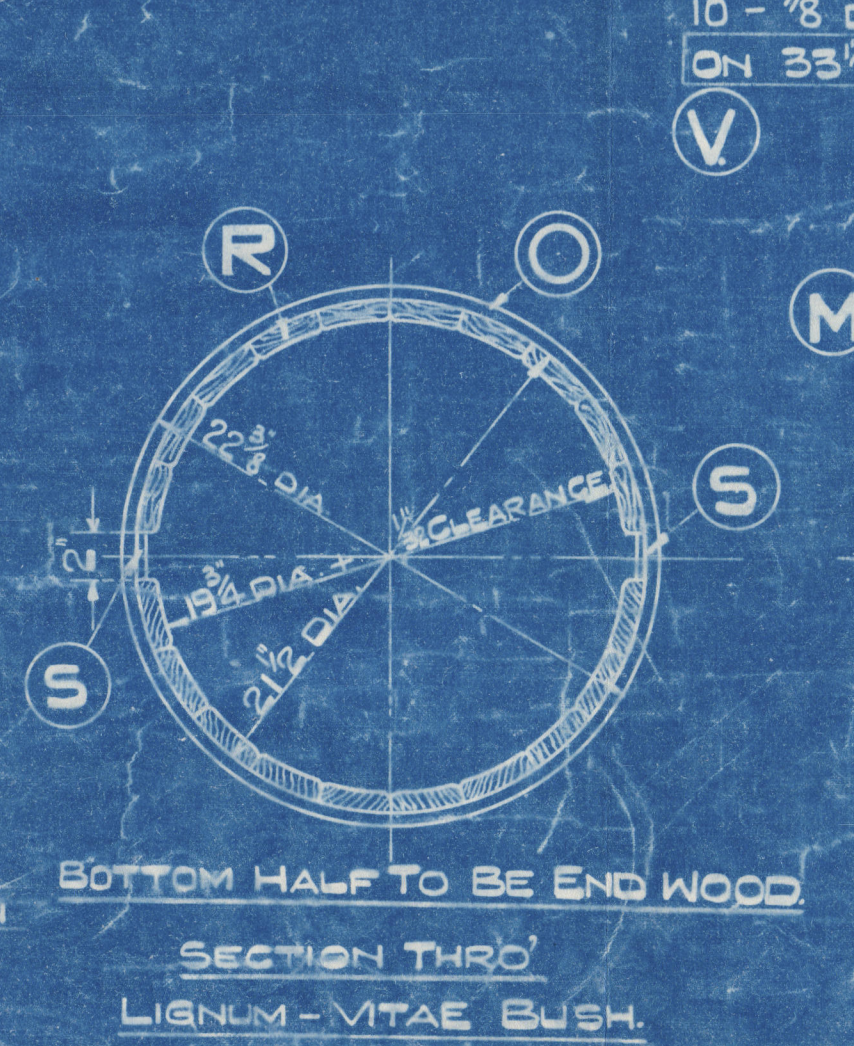
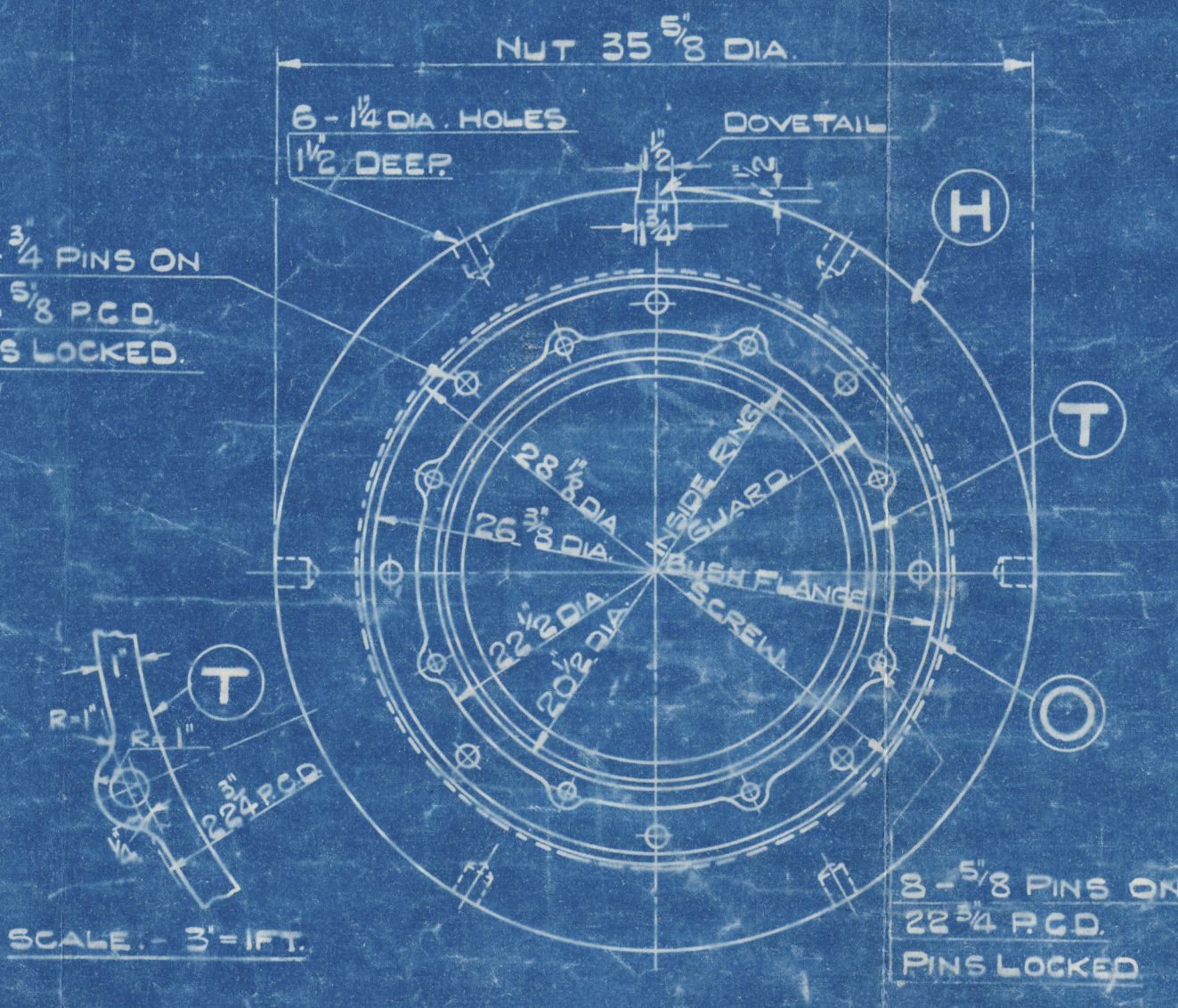
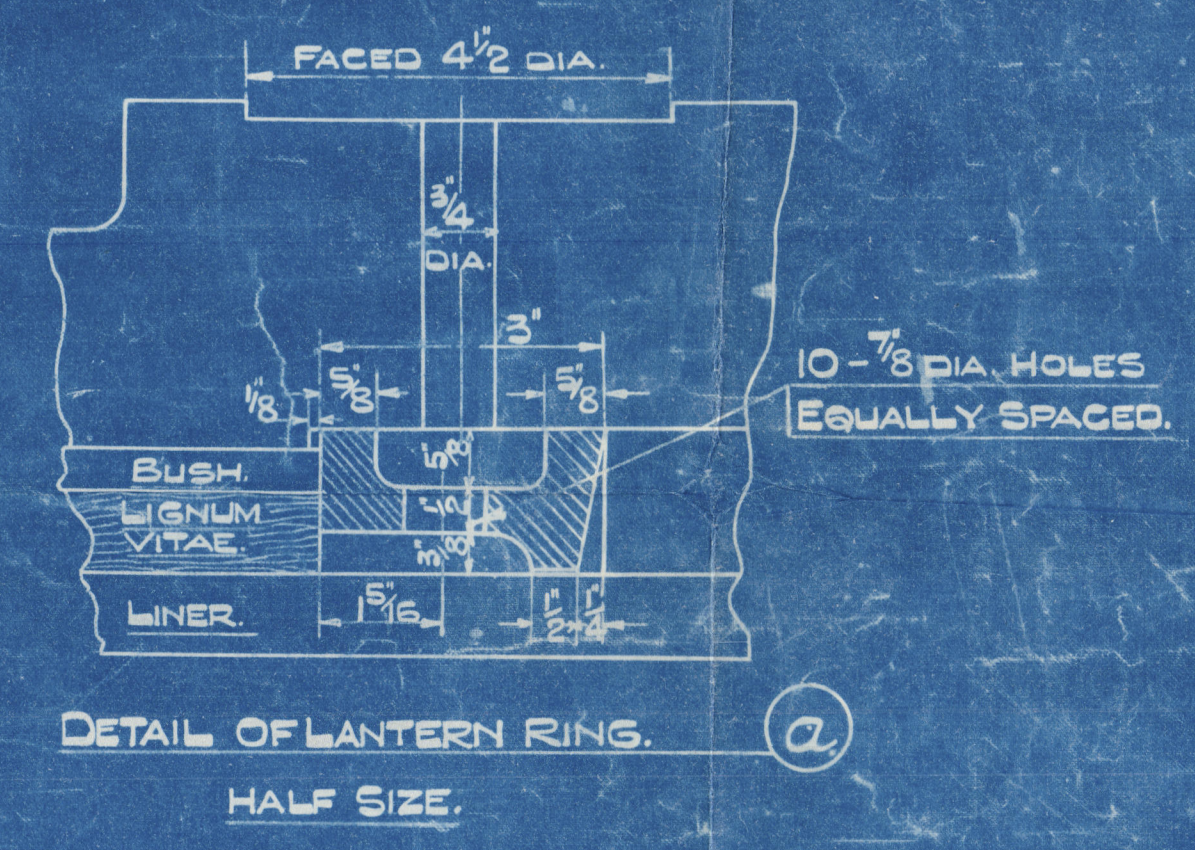
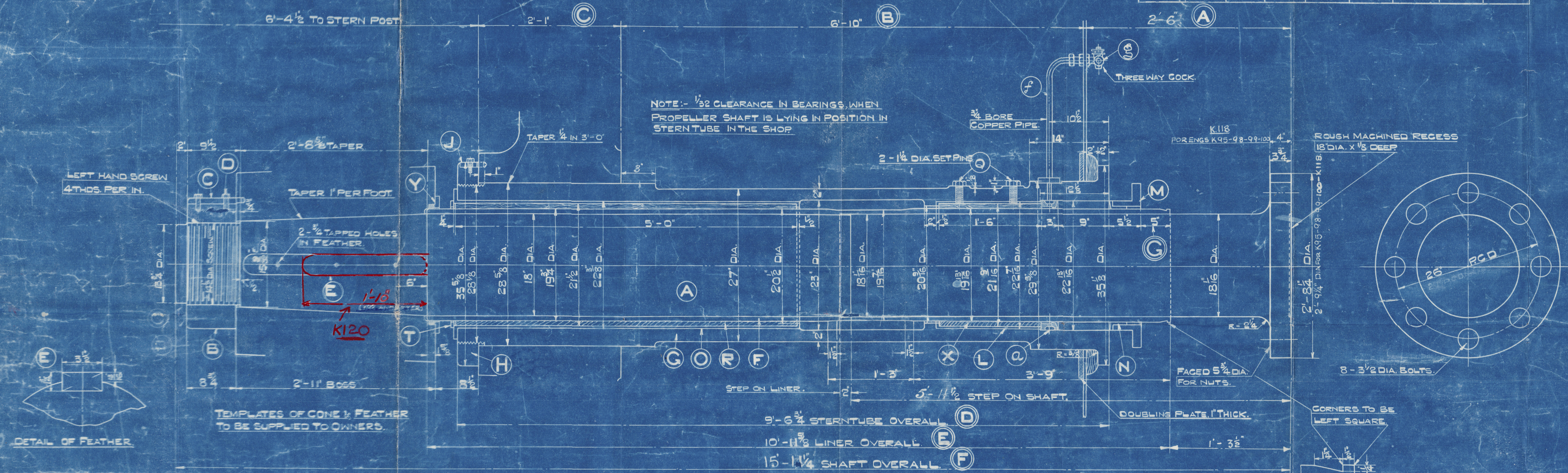


LENGTHS MEASURED FROM SHIP							DATE
ENG. NO.	A.	B.	C.	D.	E.	F.	G.
K78	2'-7 $\frac{1}{4}$ "	6'-9 $\frac{5}{8}$ "	2'-1"	9'-6 $\frac{3}{8}$ "	11'-0 $\frac{5}{16}$ "	15'-11 $\frac{13}{16}$ "	6 $\frac{1}{16}$ "
K77	2'-8 $\frac{3}{8}$ "	6'-7 $\frac{1}{2}$ "	2'-0 $\frac{5}{8}$ "	9'-3 $\frac{3}{4}$ "	10'-11 $\frac{1}{2}$ "	15'-10 $\frac{7}{8}$ "	7 $\frac{1}{8}$ "
K74	2'-6 $\frac{1}{16}$ "	6'-9"	2'-0 $\frac{5}{8}$ "	9'-5 $\frac{5}{8}$ "	10'-11 $\frac{3}{8}$ "	15'-10 $\frac{9}{16}$ "	5 $\frac{7}{8}$ "
K92	2'-6 $\frac{3}{8}$ "	8'-11"	2'-0 $\frac{5}{8}$ "	9'-6 $\frac{3}{8}$ "	10'-11 $\frac{1}{16}$ "	15'-11 $\frac{7}{8}$ "	5 $\frac{3}{16}$ "



INDEX	MARK	DESCRIPTION.	NO. OFF.	WORK SPARE	MATERIAL.	REMARKS.
A		PROPELLER SHAFT.	1	1	CRANE MARIN INSET STEEL	
B		" " NUT.	1	1	WROT IRON	
C		" " STOPPER.	1	1	MILD STEEL	
D		" " " PIN.	2	2	WROT IRON	
E		" " SHAFT FEATHER.	1	1	MILD STEEL	
F		" " LINER.	1	1	GUNMETAL	88% COPPER 10% TIN, 2% ZINC
G		STERN TUBE.	1		CAST IRON	
H		" " " NUT.	1		MILD STEEL	
J		" " " STOPPER.	1		"	
K		" " " PIN.	1		WROT IRON	
L		" " " INNER LIGNUM-VITAE BUSH.	1		BRASS	
M		" " " GLAND.	1		CAST IRON	
N		" " " BUSH.	1		BRASS	
O		" " " LIGNUM-VITAE BUSH.	1		"	
P		" " " BUSH. PINS.	8		"	
R		" " " " WOOD LINING.	-		LIGNUM-VITAE	
S		" " " " STRIPS.	2		BRASS	
T		" " " GUARD RING.	1		"	
U		" " " " PINS.	8		"	
V		" " " FLANGE BOLTS.	10		WROT IRON	
W		" " " GLAND STUDS.	6		MUNTZ METAL	
X		" " " INNER BUSHWOOD LINING.	-		LIGNUM-VITAE	
Y		PROPELLER BOSS & GLAND.	1	-	BRASS	IN HALVES
Z		" " " PINS.	3		"	
a		STERN TUBE INNER BUSH & SET PIN.	2		STEEL	
a		" " " LANTERN RING.	1		BRASS	
b		OUTER BUSH STRIP PINS.	18		ROLLED BRONZE	
c		STERN TUBE INNER BUSH STRIPS.	2		"	
e		INNER BUSH STRIP PIN.	6		"	
f		WATER SERVICE PIPE.	1		COPPER	
g		" " " COCK.	1		BRASS	TO SKETCH SHEET
h		WASHERS FOR BUSH PINS.	8		COPPER	
k		" " " GLAND.	3		"	

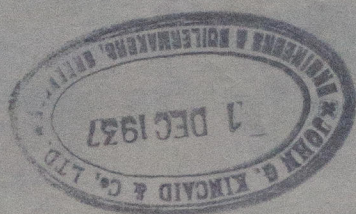
44
10/1/57

STERNTUBE & PROPELLER SHAFT
ENGINE NO. K.74-77-78

Duplicate of 111415/7
 115224/2/37
 8/12/37
 SCALE:

K 95-96	97-98	99-100
29-7-31		28-11-37
K 101-102	K 121-122	TO RED
K 9-31		
K 120	TO RED	

K02 *22nd February 1972*
to RED
 DRC © 2020
 Lloyd's Register
 8307
 W1145-0064



PROP SHAFT
K.120

(2)

Propeller Shaft. Skin tube

Tweeds N.120

Plythwoods 53

Duplicate of N.114/5/7

M.V. "KARS"

GRK. FIRST ENTRY REPORT N° 20717

W1145-0064



© 2020

Lloyd's Register
Foundation