

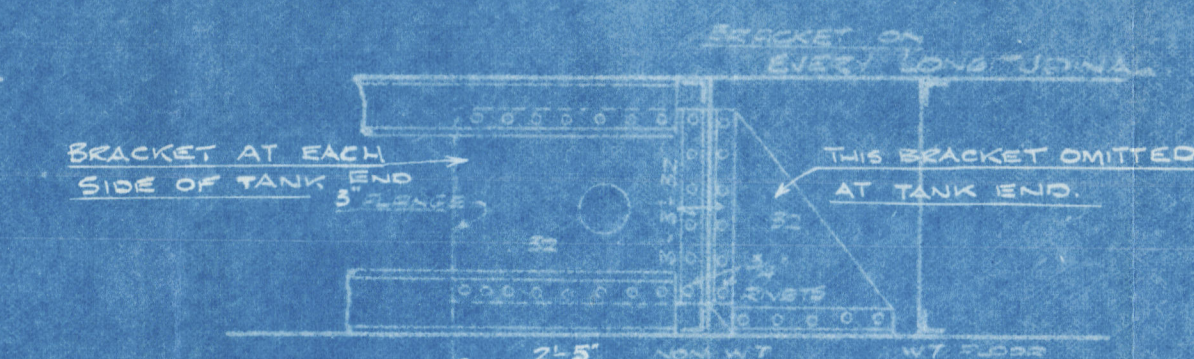
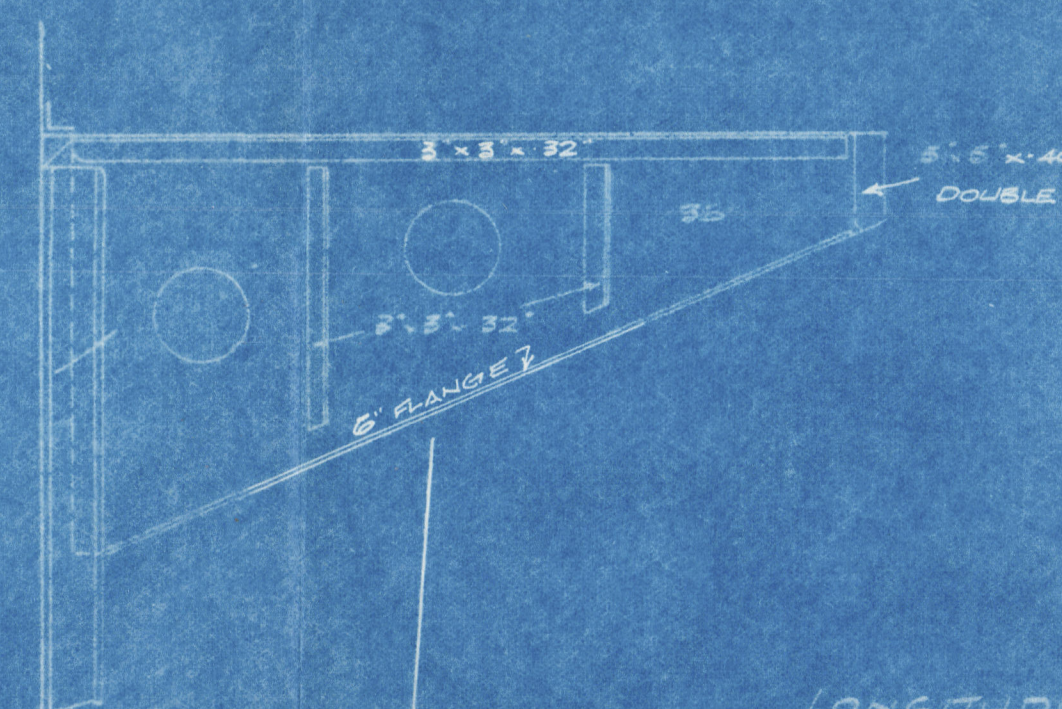
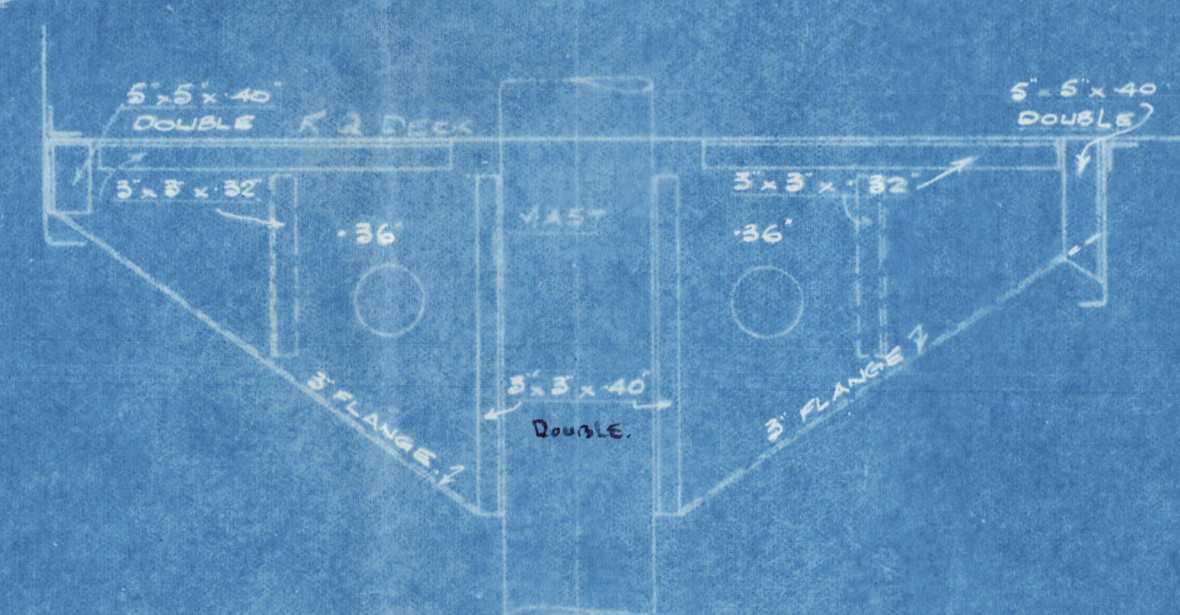
5.5. N° 60.

PROFILE & DECK PLAN

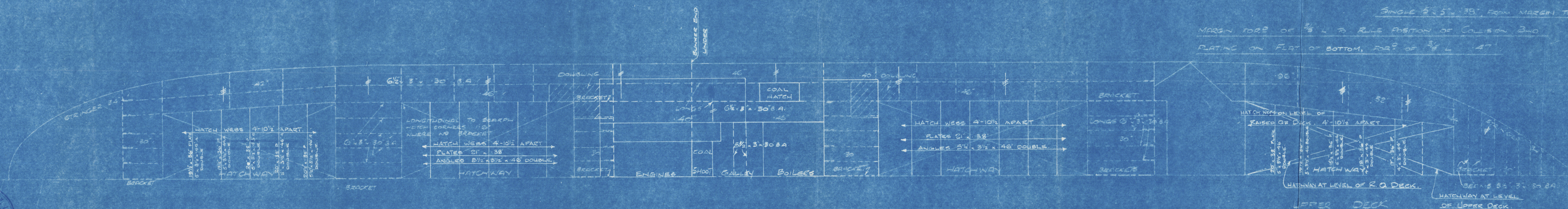
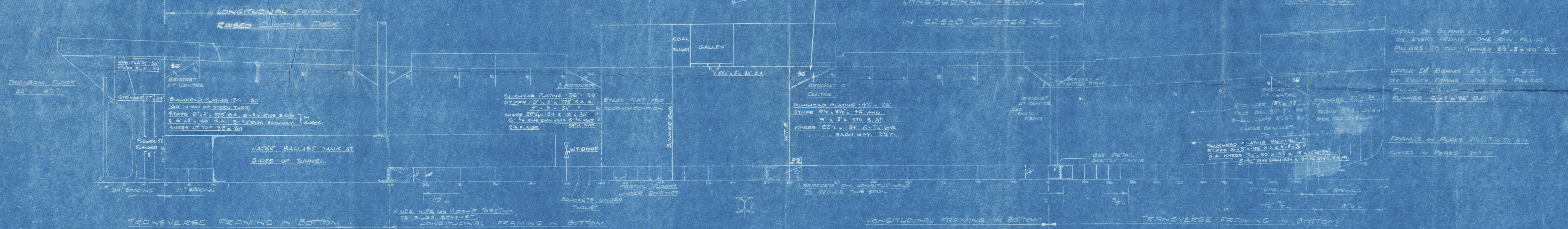
DIMENSIONS: LENGTH B.P. 245'-0" BREADTH MLD 33'-6" DEPTH MLD 17'-6" UPPER DK. 21'-3" R.O. DK.

SCALE $\frac{1}{8}$ " = 1 FOOT

MILLAR SYSTEM LTD. TO CLASS 100 A.I. LLOYDS



ALSO ARRANGEMENT OF LONGITUDINAL BRACKETS AT TANK ENDS



W1145-0045

Furness Shipbuilding Coys Ltd

S.S. Timberham

Profile & Deck's
~~Midship Section~~ (as Built)

"Kenneth Hawksfield"

ex
S.S. Timberham (No. 60)

MDB. RPT. No. 11939



© 2020

Lloyd's Register
Foundation