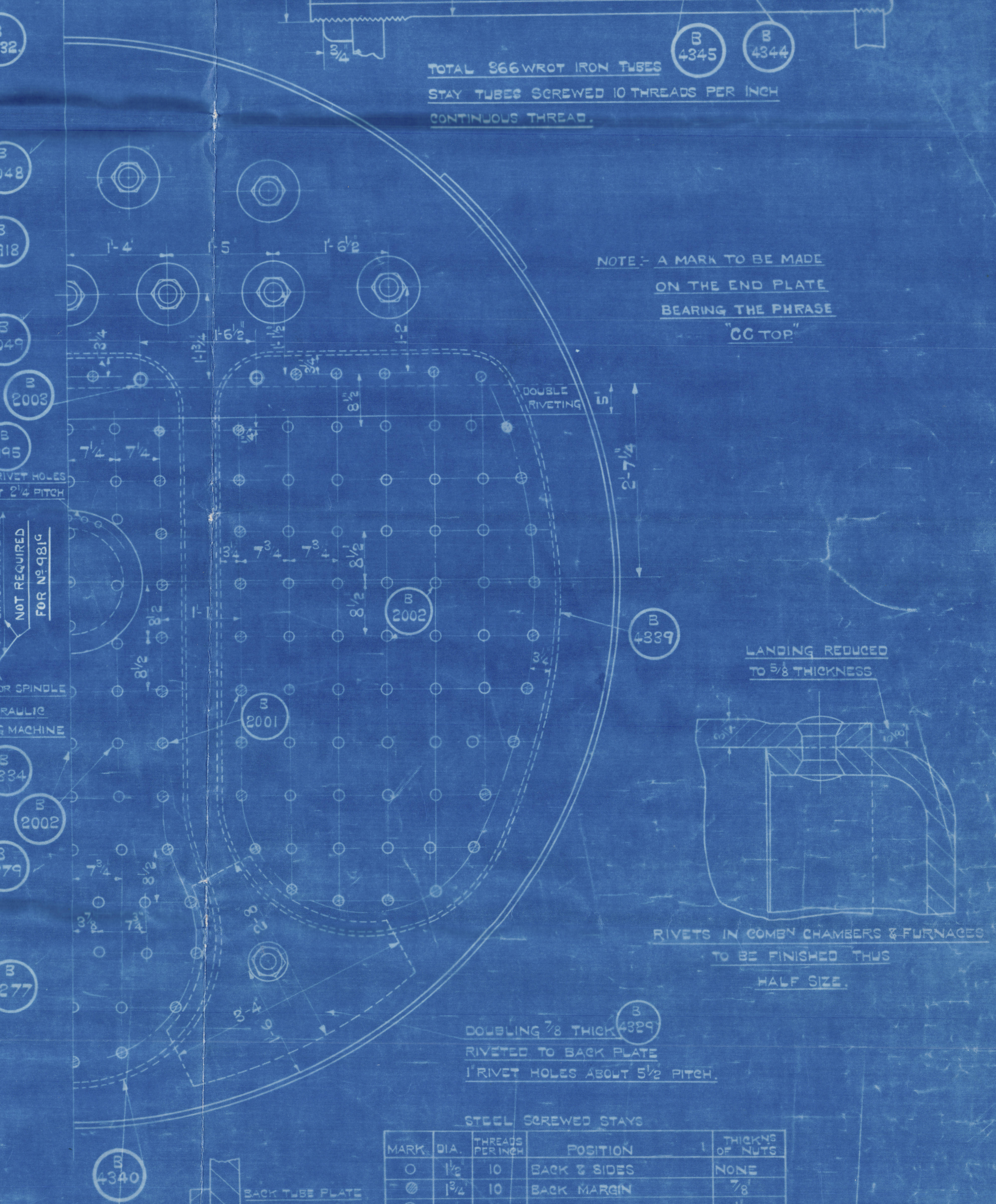
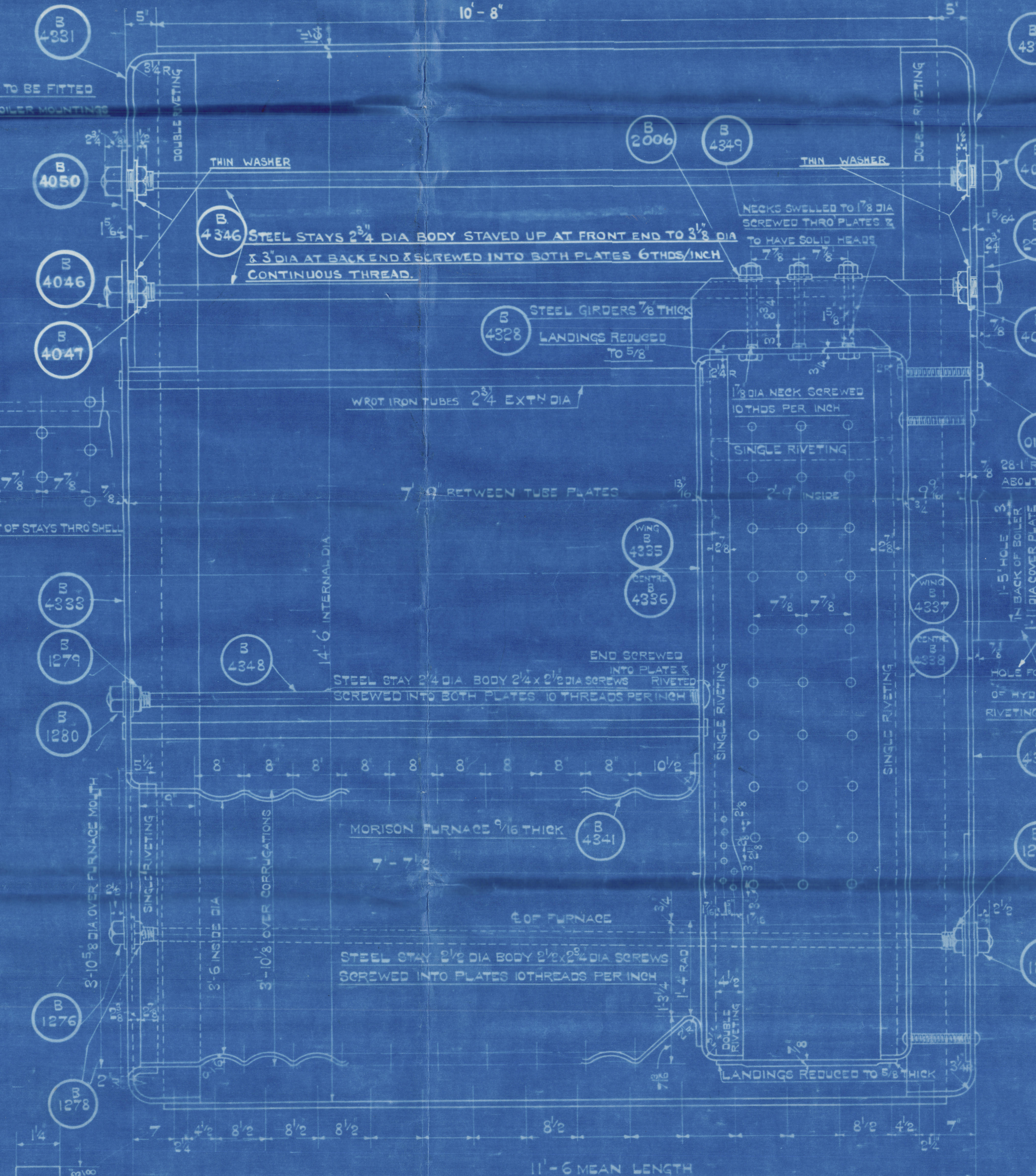
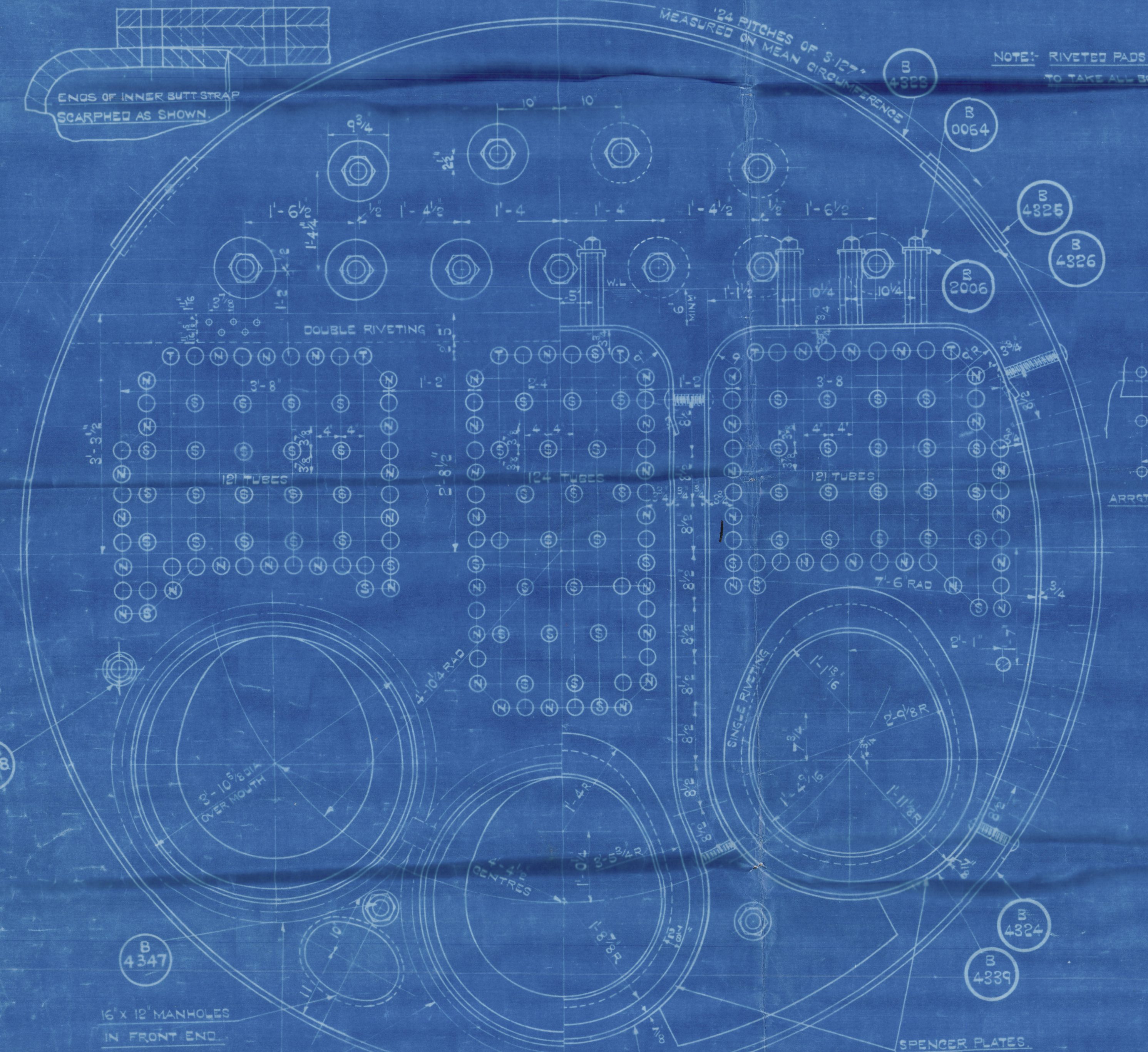
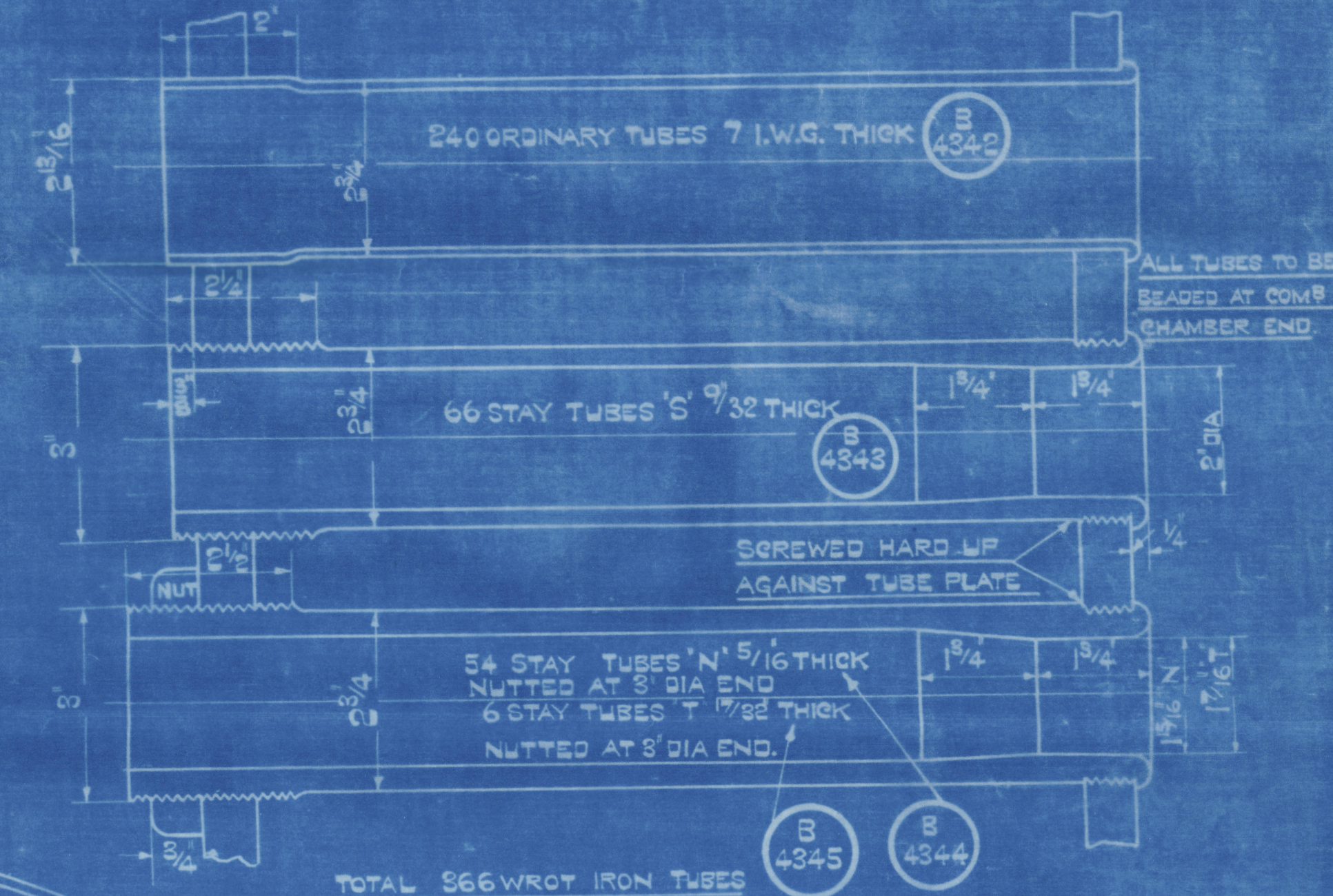


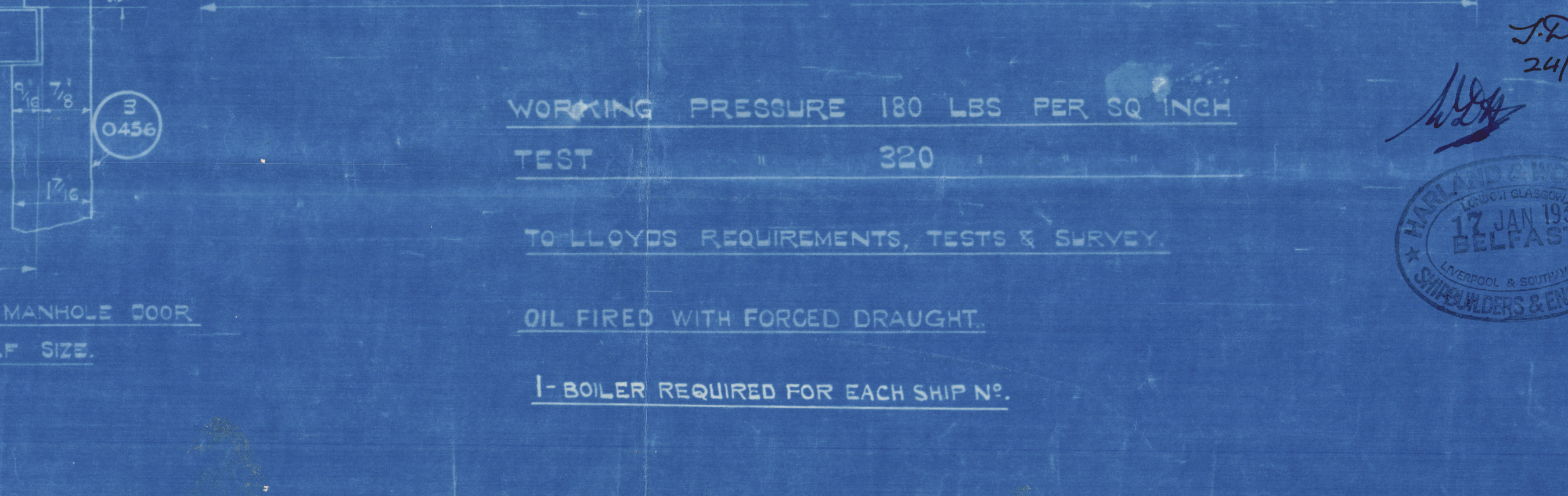
HEATING SURFACE ETC	BOILER
TUBES	2040 #
FURNACES	170
COMBUSTION CHAMBERS	268
FRONT TUBE PLATES	32
TOTAL	2508
STEAM SPACE	872 #
COMBUSTION SPACE	489 #
AREA THRO' TUBES	10 #



NOTE:  
BEFORE ANNEALING BOILER FRONT PLATE AFTER FLANGING,  
RINGS FOR FURNACE FRONTS MUST BE WELDED  
IN POSITION. (SEE DRG NO 45842)

PARTICULARS OF RIVETING

SHELL	LONGITUDINAL SEAMS DOUBLE BUTT STRAP RIVETED AS SHOWN.
	STRENGTH OF PLATE 85-89% STRENGTH OF RIVET 91%.
END PLATES	CIRCUMFERENTIAL SEAMS DOUBLE RIVETED AS SHOWN.
	WAPPED DOUBLE RIVETED 1 1/2" RIVET HOLES 3 1/8" PITCH.
FURNACES & COMB CHRS	SINGLE RIVETED 1 1/2" RIVET HOLES 3 1/8" PITCH; DOUBLE RIVETED 1 1/2" DIA HOLED 3 1/8" PITCH.
	ALL PLATES & RIVETS STEEL. ALL HOLES DRILLED IN PLACE.
	TENSILE STRENGTH OF SHELL & BUTT. STRAPS 29 TONS TO 33 TONS PER SQ INCH.
	GIRDERS 28 32
	ENDS FURNACES & COMB CHRS 26 30
	LONGITUDINAL STAYS 28 32
	SCREWED STAYS 26 30
	RIVET BARS 26 30



STEEL SCREWED STAYS

MARK	DIA	THREADS PER INCH	POSITION	THICKNESS OF NUTS
○	1 1/2	10	BACK & SIDES	NONE
◎	1 1/2	10	BACK MARGIN	7/8"
◎	2	10	CORNER	1"
			GIRDER TOPS	1 1/2"

COMBUSTION CHAMBER MARGIN STAYS TO BE SCREWED  
INTO BOTH PLATES & FITTED WITH NUTS AT EACH END  
ALL OTHER SCREWED STAYS TO BE SCREWED INTO PLATES  
AND RIVETED OVER. SCREWED STAYS NOT TO BE WORKED IN FIRE  
SCREWED STAYS TO HAVE AN 1/2" DIA. HOLE DRILLED IN EACH END TO A  
DEPTH OF 3/8" BEYOND THE LIMIT OF THE PLATES

SECTION 3  
SUB-CODE 0382

NOS 961C & 962C 981C

DONKEY BOILER.

SCALE: 1" = 1 FOOT AS MARKED.



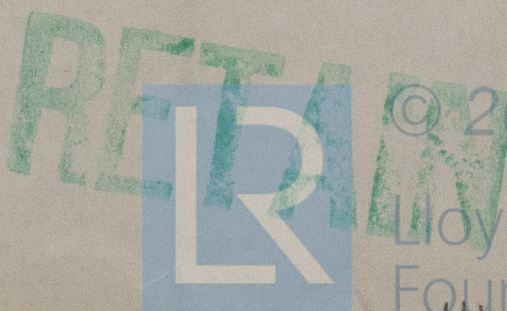
Harland & Wolff Ltd  
981681

DBaker

Donkey boiler

Sitala

GLASGOW REPORT No. 58157



© 2020

Lloyd's Register  
Foundation

W1142-0141