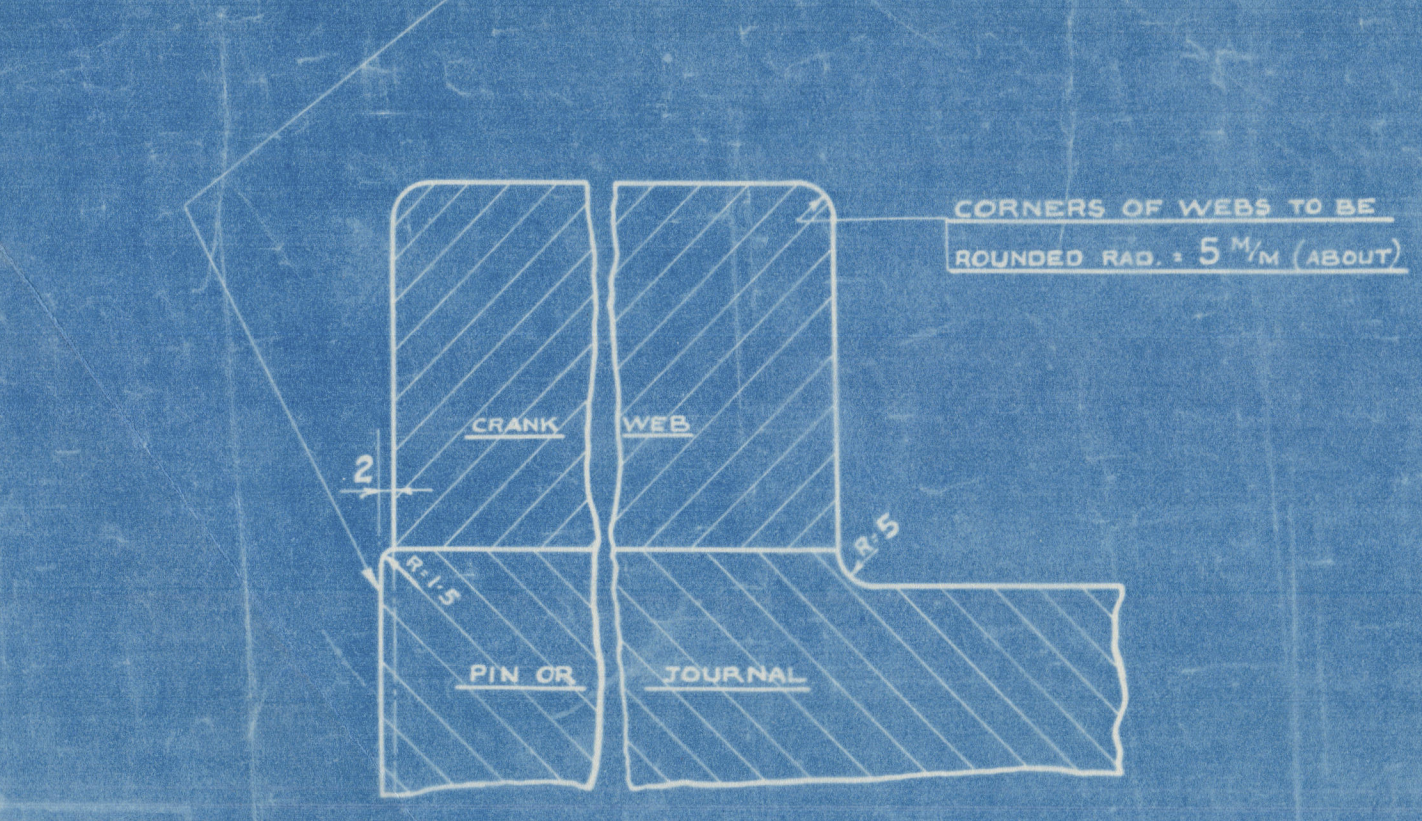
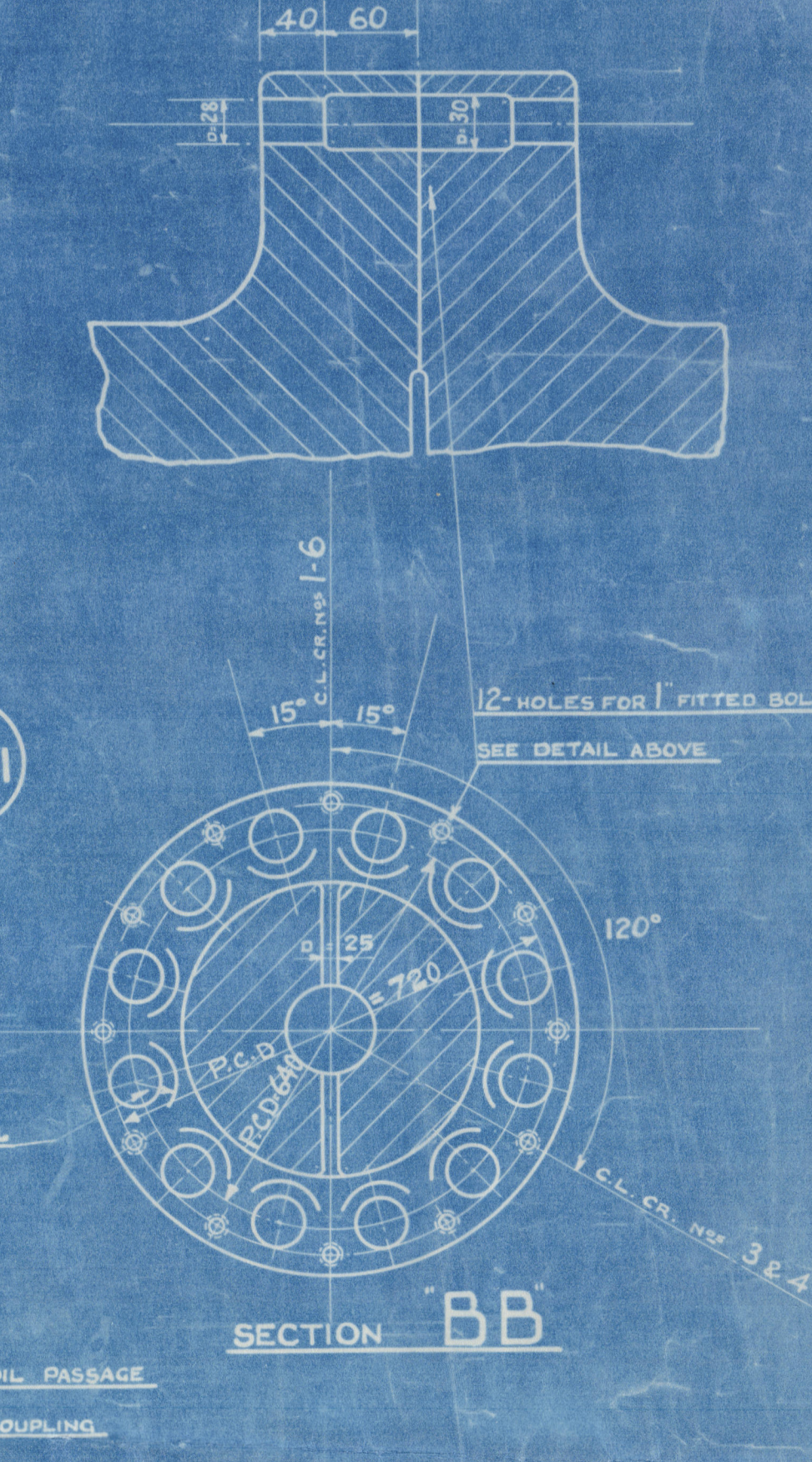
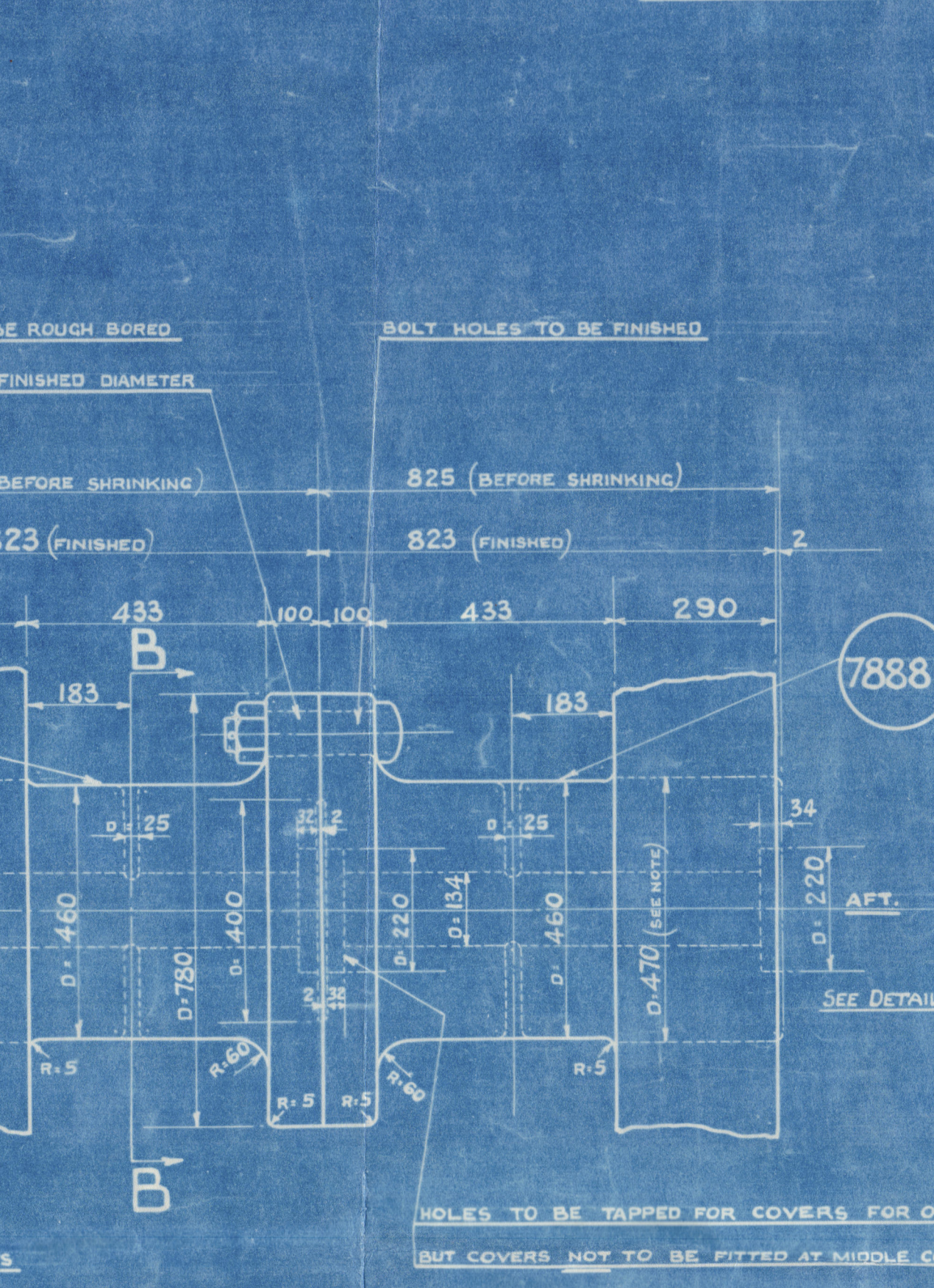
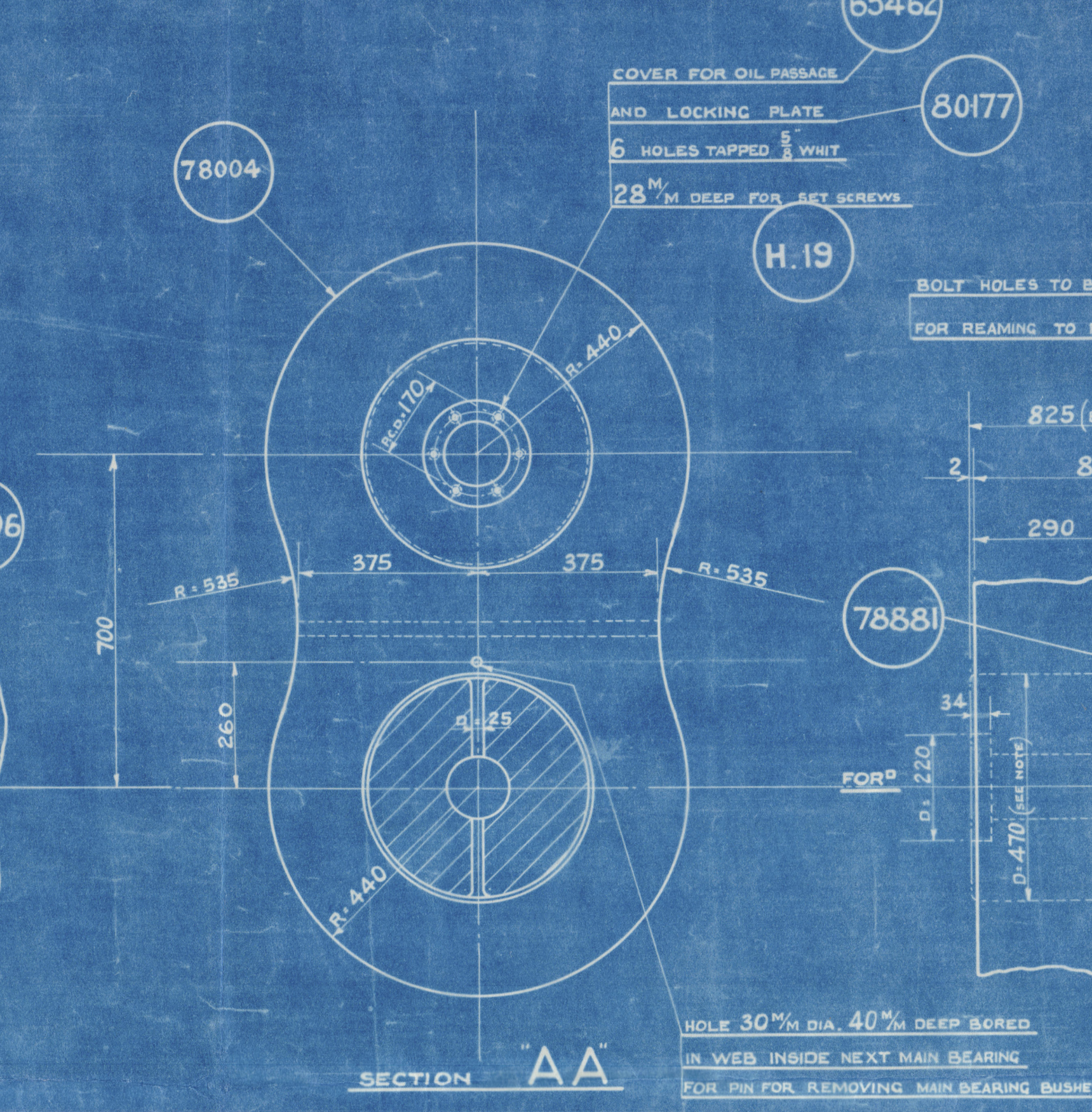
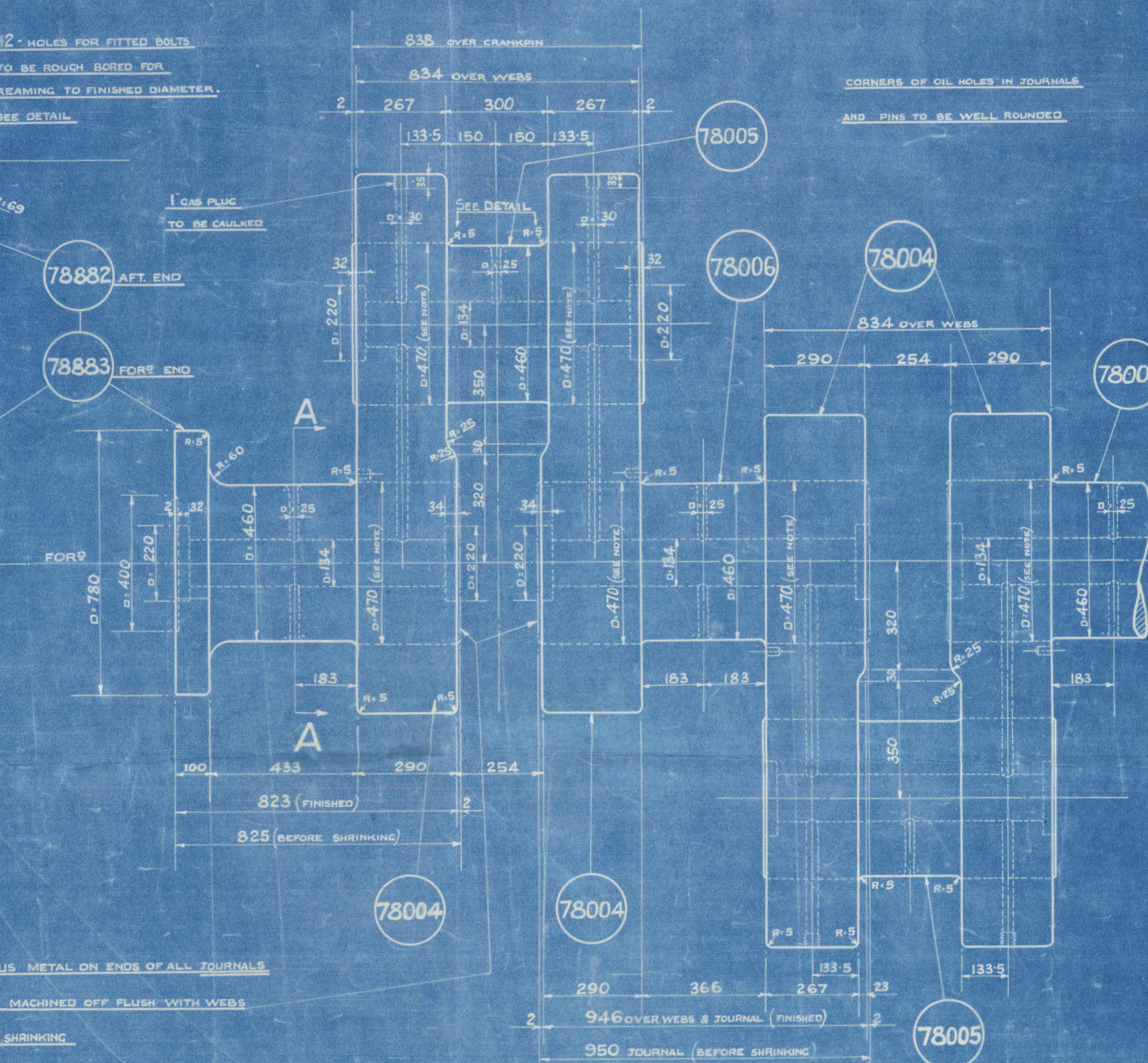
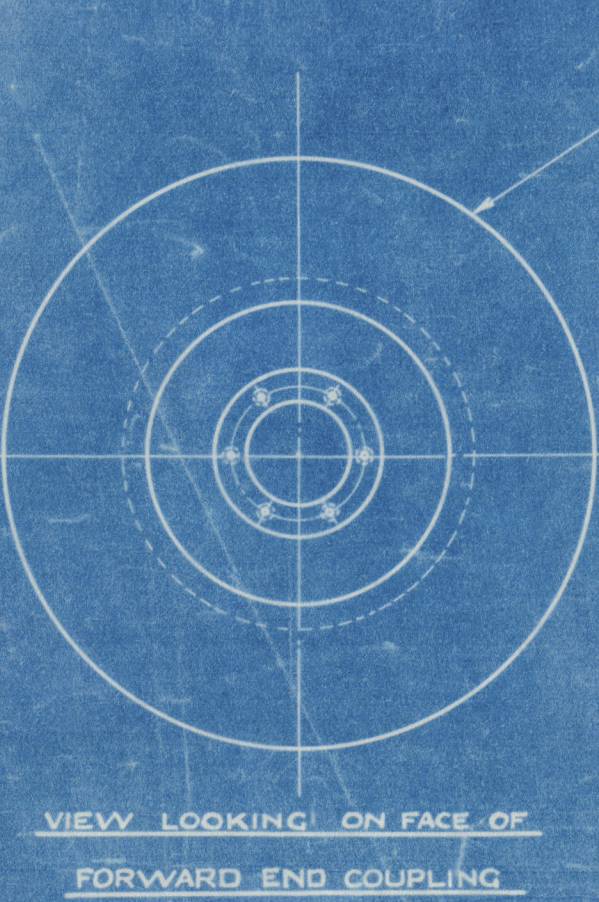
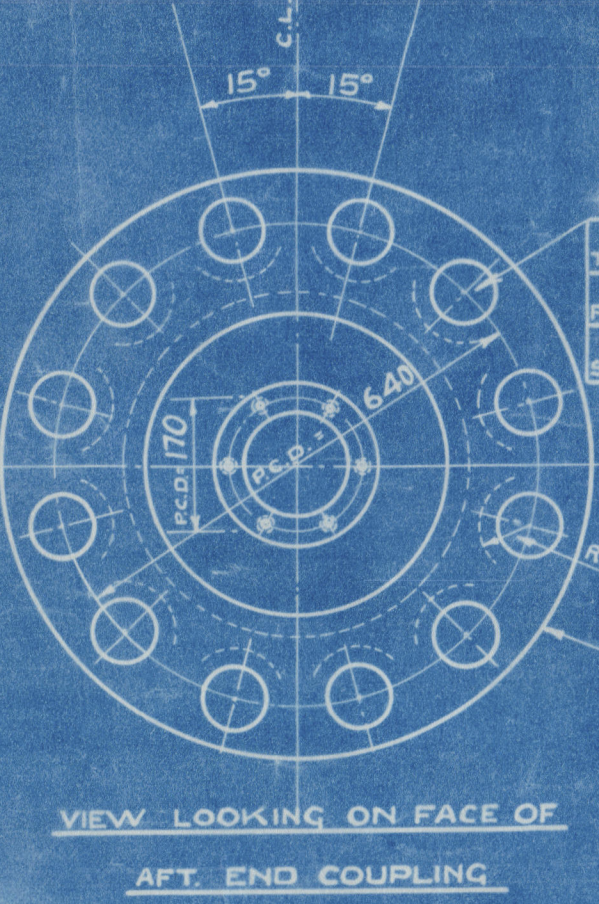
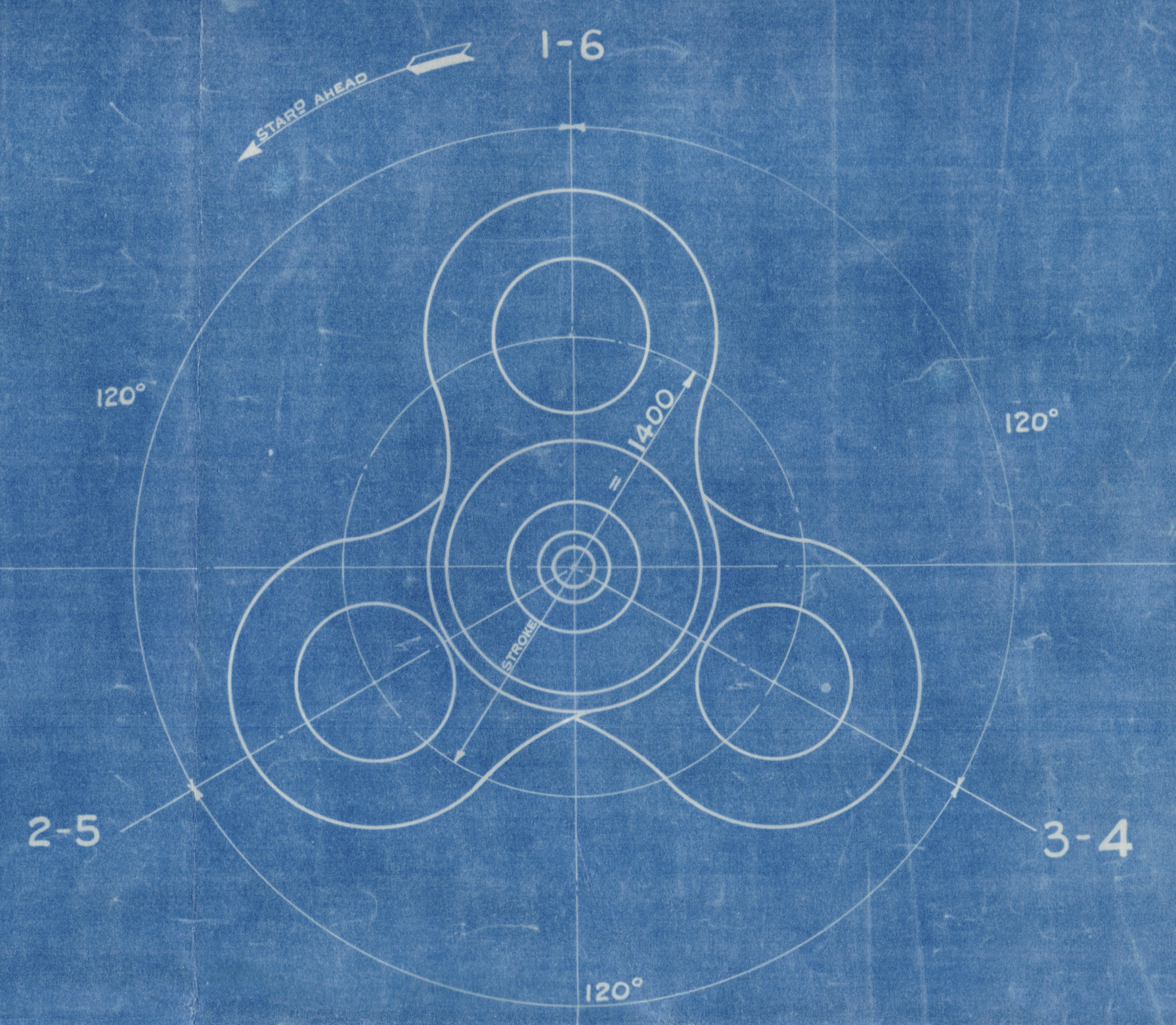


— DRAWN FOR STARBOARD ENGINE —



M/V N° 981 G.

NEWELL STANDARD LIMITS TO BE USED					
NO. OFF PER ENG	DESCRIPTION	PATTERN NUMBER	MATERIAL	WEIGHT IN KGS.	REMARKS
STARBOARD ENGINES	CRANKSHAFT (FORWARD PART)	78879	SIEMENS-MARTIN INCOG	18936	BUILT FROM PARTS AS SHOWN
	" (AFT PART)	78880	"	18778	"
12	CRANKWEBS	78004	"	1820	"
6	CRANK PIN	78005	"	1064	SEE NOTE
4	CRANK JOURNAL	78006	"	1156	"
2	" " " " WITH COUPLING (MIDDLE)	78881	"	1174	REGARDING
1	" " " " (AFT)	78882	"	1180	SHRINKING
1	" " " " (FORWARD)	78883	"	1240	"
12	COUPLING BOLT	78884	3/4 NICKEL STEEL	14	"
12	NUT FOR COUPLING BOLT	78885	WROG IRON	4	"
12	1/8 SPLIT PIN FOR BOLT		STEEL		"
26	COVER FOR OIL PASSAGE	65462	CAST IRON	6	STD. Dwg. No. 23107
1	LOCKING PLATE	80177	SOFT IRON		23107
156	1/8 SCREW FOR COVER	H. 19	BAR STEEL		23940
12	1 GAS PLUG		BAR STEEL		STOCK

CRANKSHAFT TO BE MACHINED ALL OVER  
MATERIAL - SIEMENS-MARTIN INCOG STEEL 28-32 TONS/SQ. IN TENSILE  
TO THE SURVEY AUTHORITIES' REQUIREMENTS TESTS AND INSPECTION

S.A.6 650 1400 A.I.P.I.  
CRANKSHAFT

SCALES: 1:15, 1:10 & 1:4  
CODE N° 0421

HARLAND & WOLFE  
LONDON GLASGOW  
BELFAST  
HULL  
MILWAUKEE  
NEW YORK  
PHILADELPHIA  
PITTSBURGH  
ST. LOUIS  
WHEELING



H. & W. N<sup>o</sup> 9819.  
MAIN ENG. CRANK SHAFT.

---

*Sitala*  
GLASGOW REPORT No. 58157

GLASGOW REPORT No. —

GLASGOW REPORT No. —

RETAIN



© 2020

Lloyd's Register  
Foundation

W 1142-0140