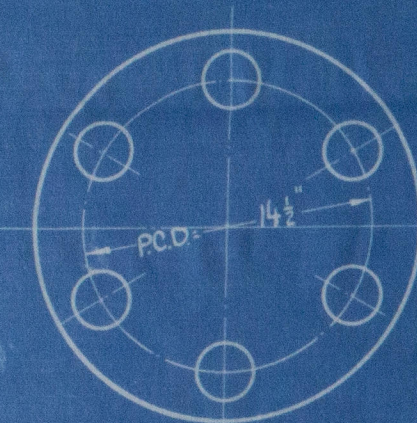
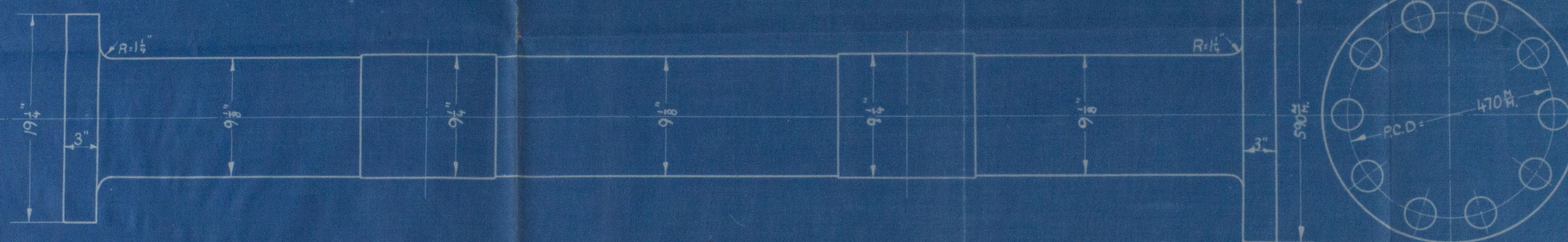


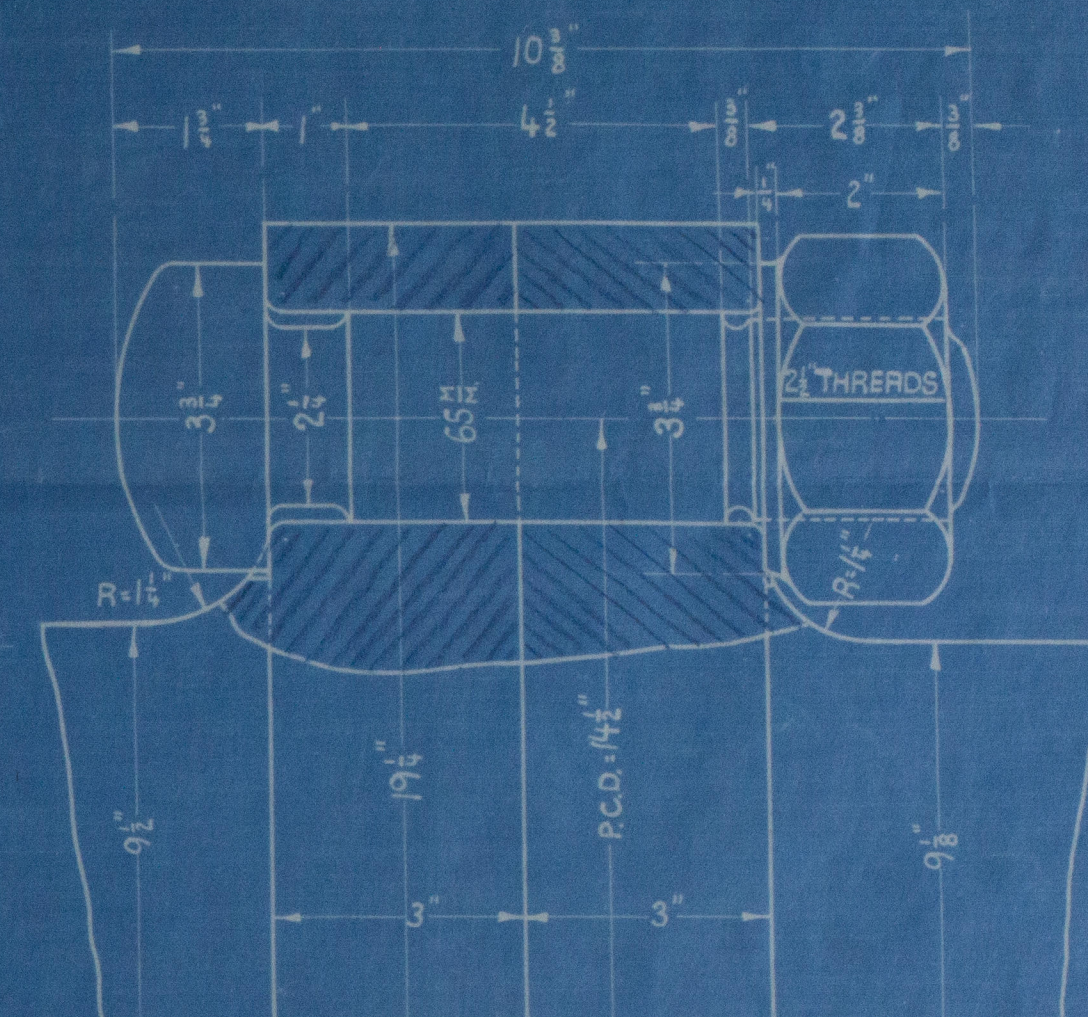
31950



6 OFF 65 H BOLTS

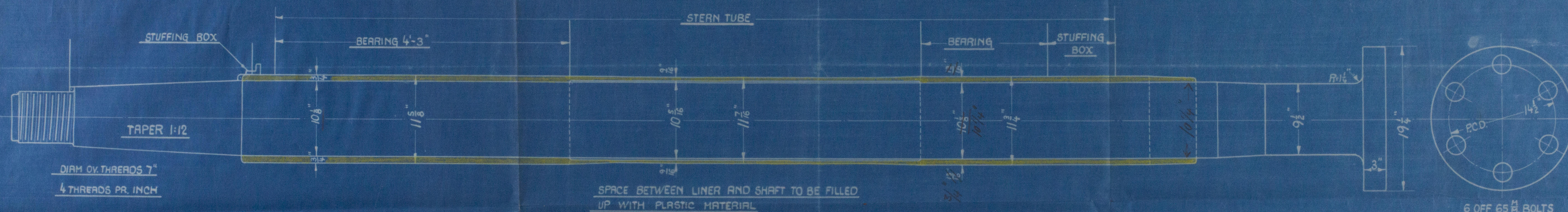


10 OFF 65 H BOLTS



TAIL SHAFT

INTERMEDIATE SHAFT



6 OFF 65 H BOLTS

## SHAFTS FOR NAKSKOV YARD N° 28

6 CYLINDER FOUR STROKE CYCLE DIESEL ENGINE

|                |                  |
|----------------|------------------|
| CYLINDER DIAM. | 550MM = 21,65"   |
| STROKE         | 1000MM = 39,375" |
| REVS. PR. MIN. | 135              |

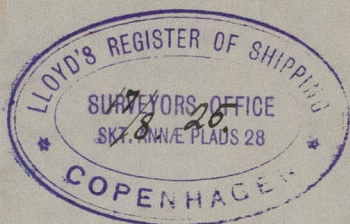
|                    |                     |
|--------------------|---------------------|
| DIAM. OF PROPELLER | 11' 3"              |
| FLY WHEEL          | 2120MM = 6' 9 9/16" |
| WEIGHT             | 6,7 TONS            |

AKTIESELSKABET  
BURMEISTER & WAIN'S MASKIN- OG SKIBSBYGGERI  
14-8-1925

12-13

AKTIESELSKABET  
BURMEISTER & WAIN'S  
MASKIN & SKIBSBYGGERI  
14-1-1925 N° 31950  
W1142-0095





*Plan of*  
INTERMEDIATE AND PROPELLER SHAFTS  
FOR THE DIESEL OIL ENGINES

*to be constructed by*

AKTIESELSKABET  
BORMEISTER & WAINSKIN- OG SKIBSBYGERI  
Copenhagen

*for the Twin Screw Motor Vessel*

*Yard N<sup>o</sup> 28*

*being built by*

*akts. Næskov Skibsverft.  
Næskov.*

*M/S "TALOMA" OF COPENHAGEN.*

*RPT. N<sup>o</sup> 7353.*

Lloyd's Register  
Foundation

W1142-0095