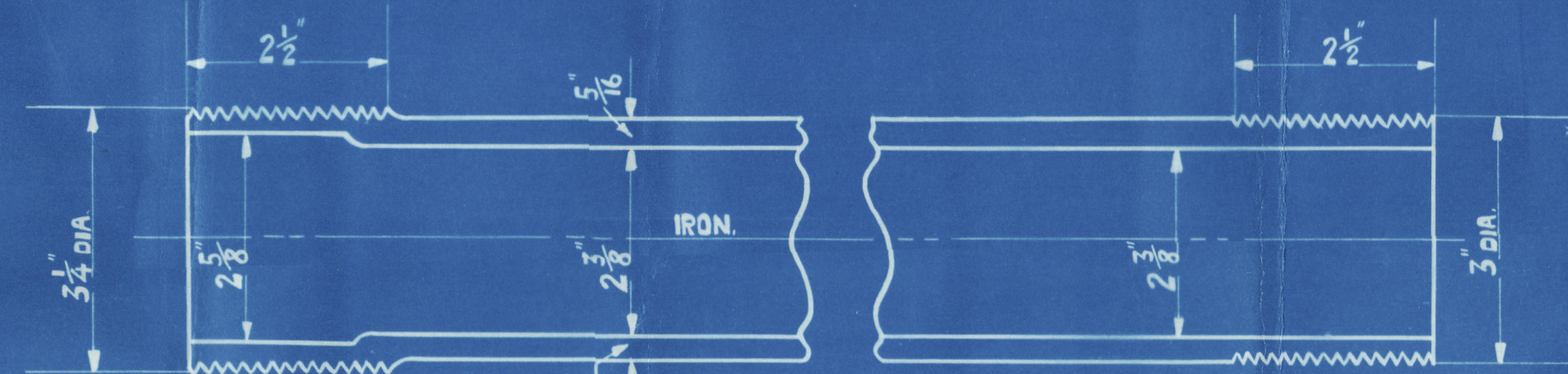


HEATING SURFACE	SQ FT
366 TUBES 7-11 LONG X 3 EXT DIA	2275
4 FURNACES 38" X 40 1/2" MEAN	183
FIREBOX TOPS AND SIDES	186
BACKS	72
BACK TUBE PLATES	49
FRONT	45
TOTAL H.S. IN ONE BOILER	2810
THREE BOILERS	8430

GRATE SURFACE	SQ FT
4 FURNACES 38" INSIDE DIA. X 5'-6" BARS	69.666
TOTAL G.S. IN 3 BOILERS	208.99

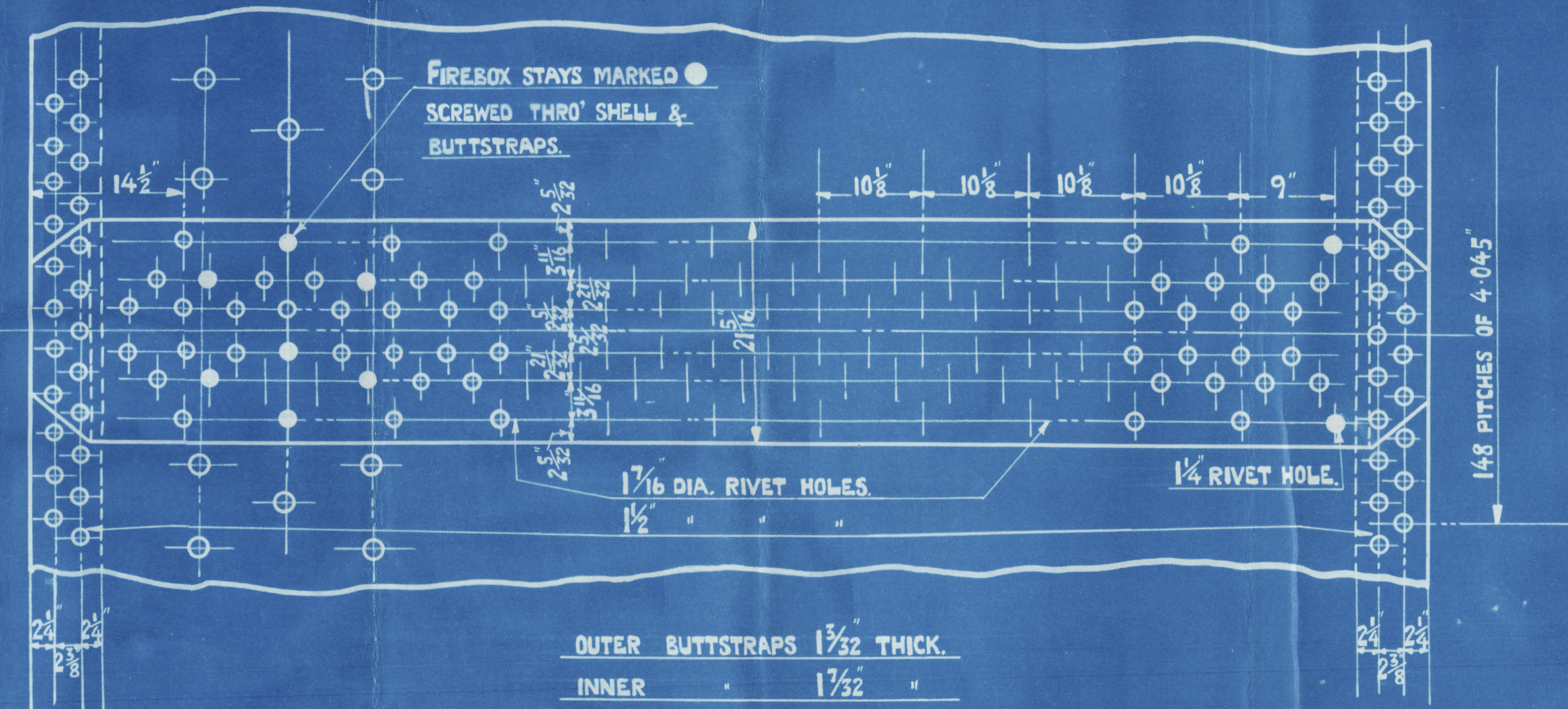
H.S. = 40.3 T.S. = 32.6
G.S. = 40.3 G.S. = 32.6

STEAM SPACE FROM 9' ABOVE FIREBOX TOP = 444 CUBIC FT.
WEIGHT OF FRESH WATER 9' ABOVE FIREBOX TOP 28 1/4 TONS.
AREA THRO' TUBES = 11.28 SQ FT.



DETAIL OF STAY TUBES MARKED ③
SCREWED 9 THDS PER INCH
EFF. AREA = 1.98"

STEEL STEAM SPACE STAYS
MINIMUM TENSILE STRENGTH OF BARS = 28 TONS PER SQ
STAYS 3/8 DIA. 6 THDS PER AREA = 7.851"
DEPTH OF OUTSIDE NUTS = 3 3/8
INSIDE = 1 1/2



OUTER BUTTSTRAPS 1 3/32 THICK
INNER 1 1/32 "
TENSILE STRENGTH OF SHELL PLATES AND BUTTSTRAPS 28 TO 32 TONS PER SQ
GIRDER PLATES 28 " 32 " "
ALL OTHER 26 " 30 " "
ALL RIVET HOLES DRILLED TO PLACE.

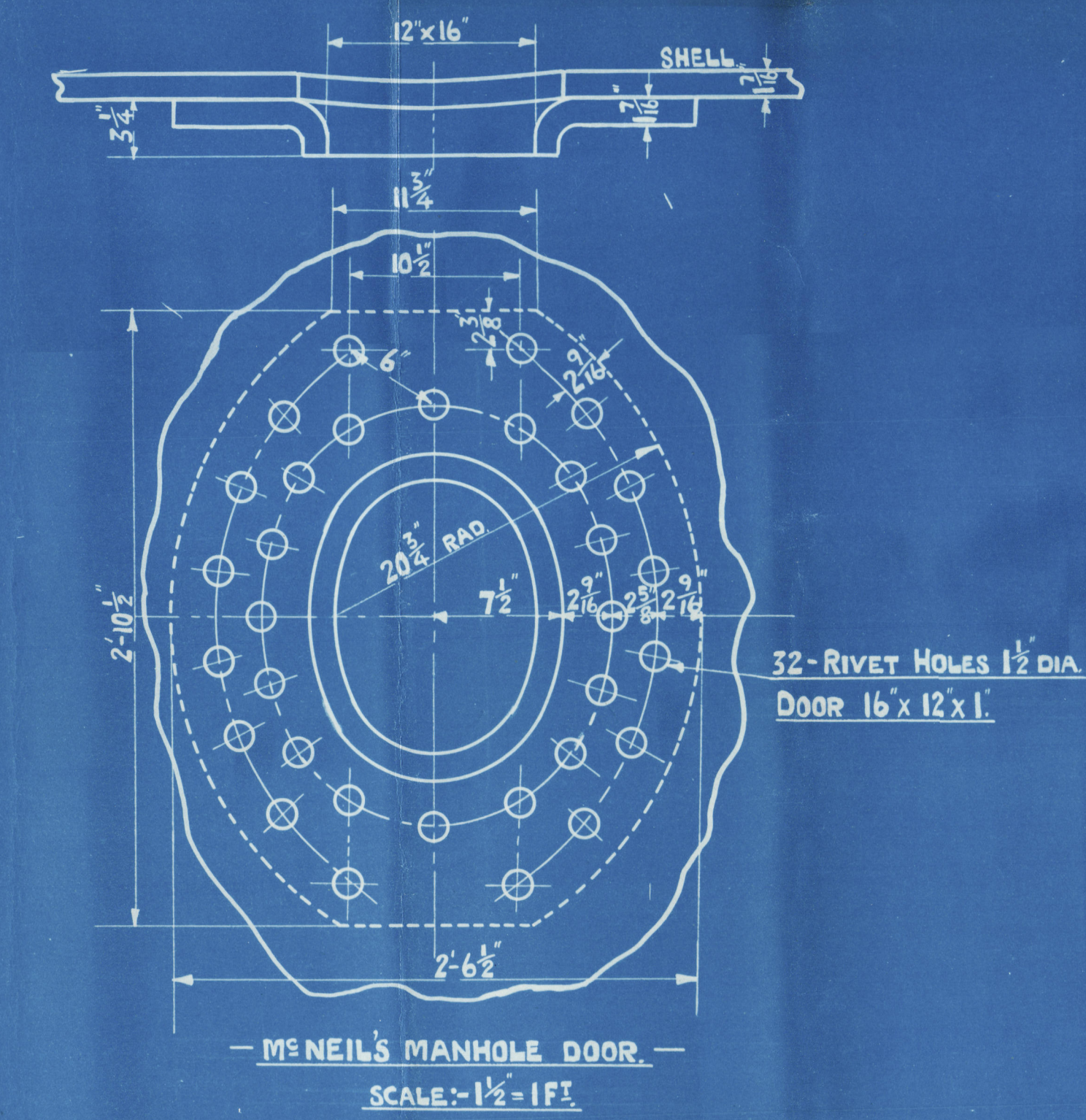
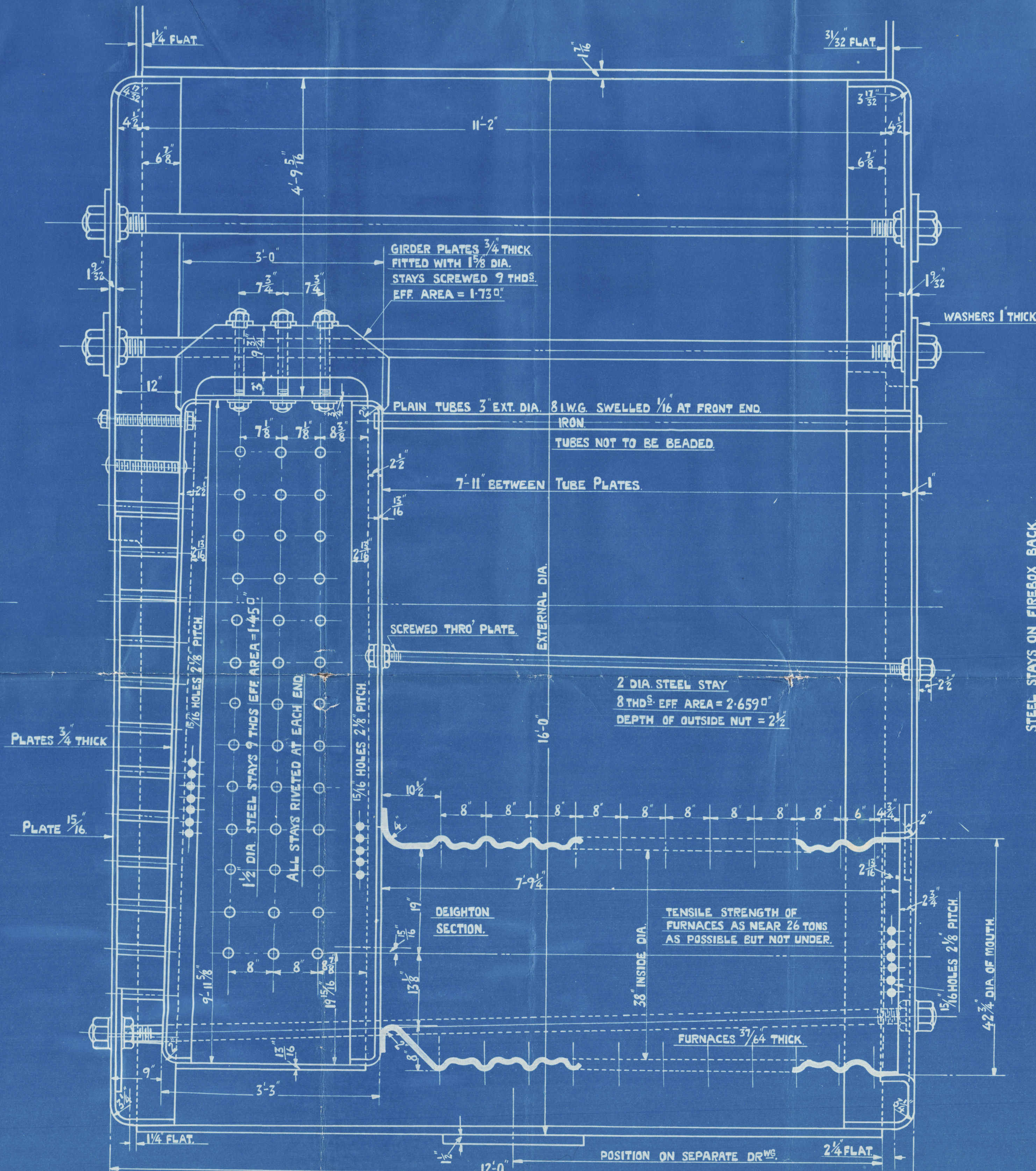
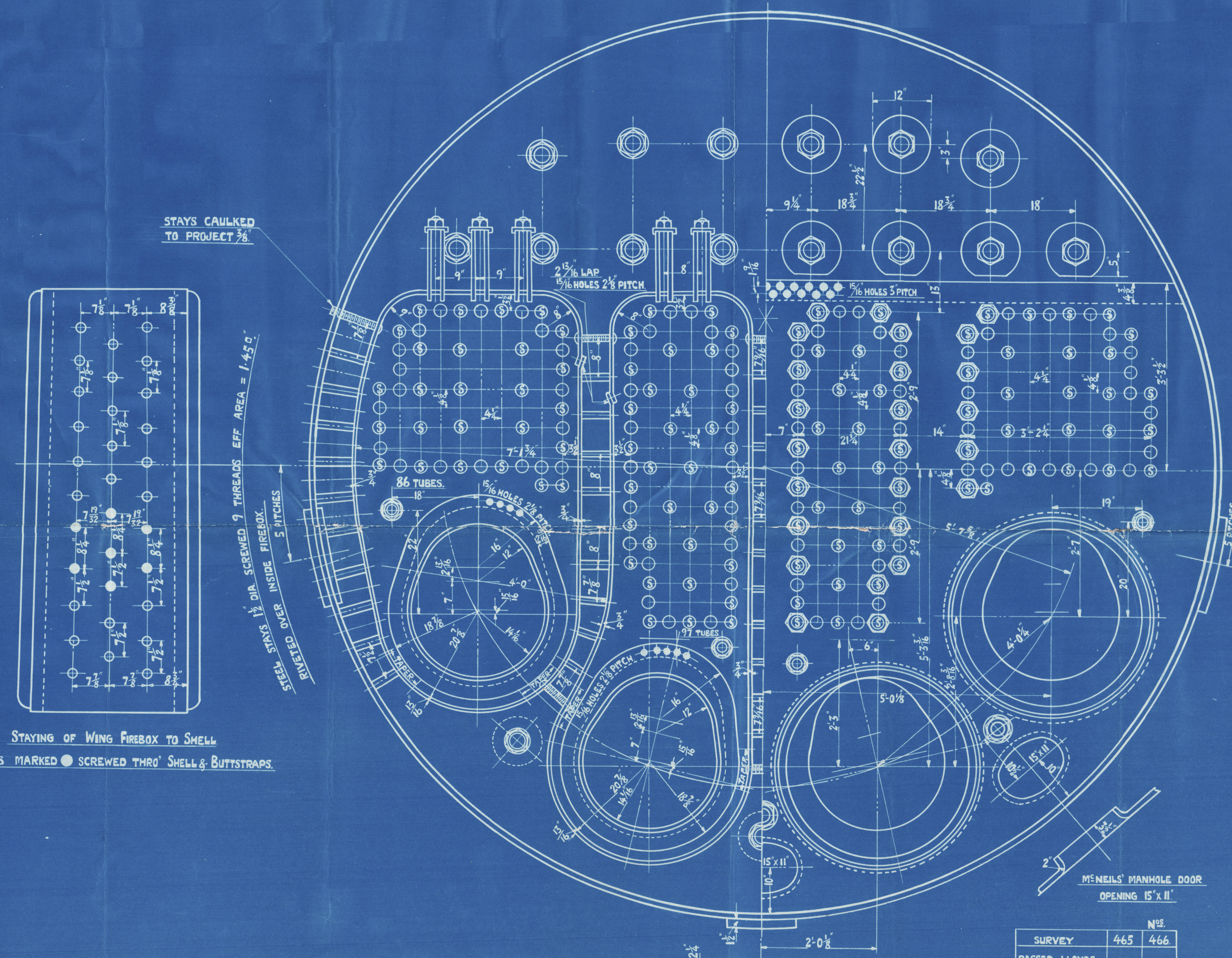
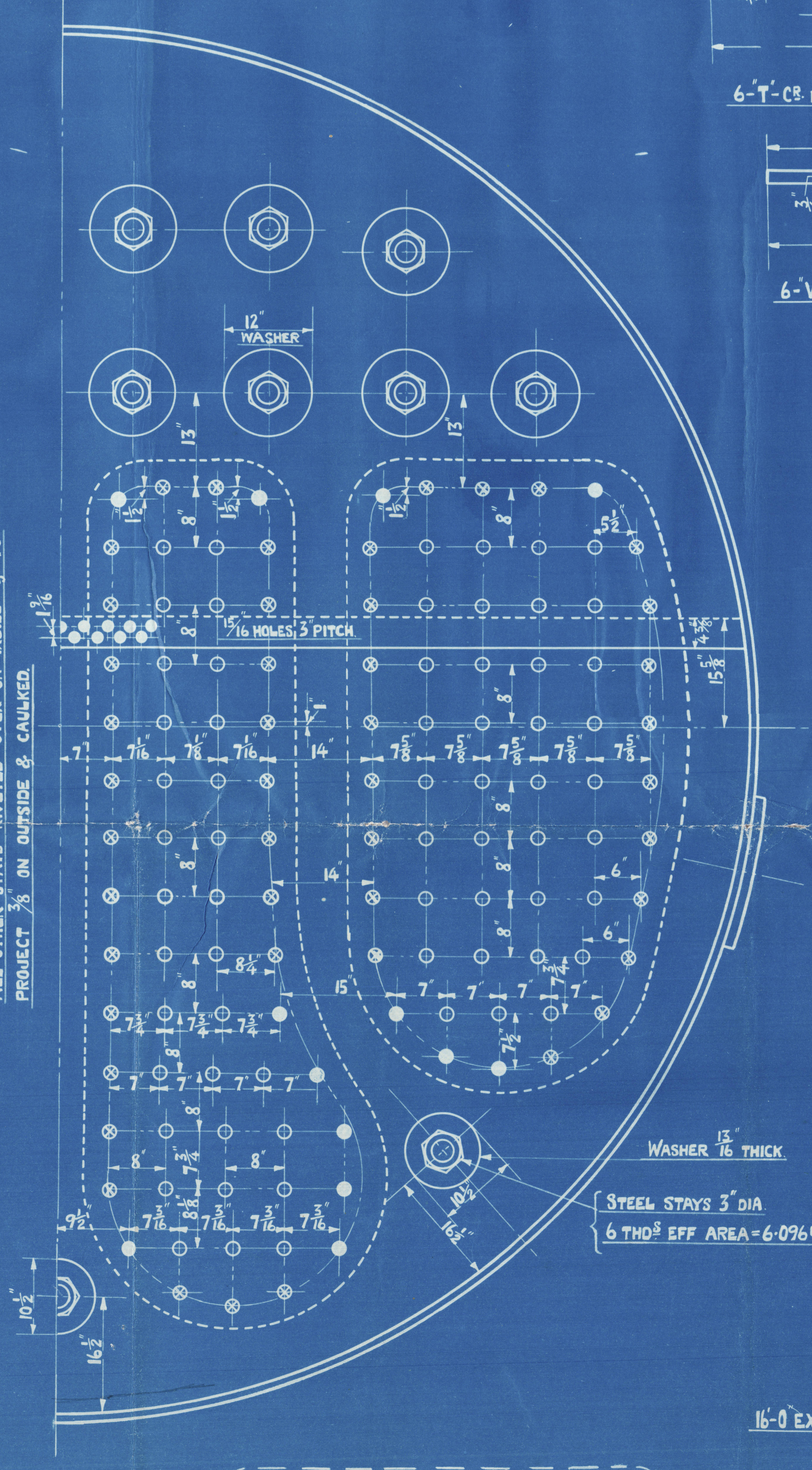


PLATE LIST				
Nº	STRAKE	DESCRIPTION	LENGTH	BREADTH THICK
3	A	SHELL TOP	134 1/4	1 1/16
3	B	" BOTTOM	"	"
6	C	BUTTS OUTER	11'-2"	21 3/16 1 3/32
6	D	" INNER	"	1 1/32
6	E	GIRDERS	38'	3 1/4
3	F	TOP FRONTS		1 3/32
3	G	FURNACE FRONTS		1'
3	H	TOP BACKS		1 3/32
3	J	BOTTOM BACKS		15' 1/16
3	K	C ^B BACK TUBE PLATES		15' 1/16
6	L	WING "		3 1/4
3	M	C ^B FIREBOX BACKS		3 1/4
6	N	WING "		"
1	P	PAD FOR CHOCKS	3'-10 1/2	25' 1 1/2



STEEL STAYS ON FIREBOX BACK
STEEL STAYS MARKED ● 1 1/2" DIA. 9 THDS EFF. AREA = 2.36"
" " " " 1 1/4" " 9 " " " = 2.03"
" " " " 1 1/2" " 9 " " " = 1.45"
MARGINAL STAYS NUTTED AT EACH END.
ALL OTHER STAYS RIVETED OVER ON INSIDE & TO PROJECT 3/8 ON OUTSIDE & CAULKED.



STAY BAR LIST			
Nº	DESCRIPTION	DIA	LENGTH
42	STEAM SPACE	3 3/8	12'-9 1/2
9	WATER SPACE	3"	12'-7 1/2
	BREAST STAYS	2"	8'-5 1/2
	SCREWED	1 3/8	18'-0
	"	1 1/2	"
	"	1 1/2	"

Nº	
SURVEY	465 466
PASSED LLOYDS	
OWNER'S APPVL	

ALL MATERIAL STEEL EXCEPT TUBES WHICH ARE IRON.
3 BOILERS THUS FOR EACH N.
HYDRAULIC TEST PRESSURE = 350 LBS PER SQ

WORKMAN CLARK & CO. LTD
ENGINEERING DEPT. BELFAST
DRAWING N^º 24329 A DATE 10-3-21
DRAWN BY
CHECKED BY
TRACING CHECKED BY

16'-0" EXTERNAL DIA X 12'-0" LONG X 200 LBS WP
TO PASS LLOYDS SURVEY
NOS 465-6
MAIN BOILERS
SCALE: 1" = 1 FT.



Belfast
Workman Clark & Co
- PS. 465 - 6

W1140-0168

Main Boilers
S.S. Dutche Workman
Bel Repl. No. 8734.
SS

Please return
to Belfast Office