

Nº 263

- MIDSHIP SECTION -

DIMENSIONS: 290'0" LENGTH B.P. x 44'0" BREADTH MLD. x 19'12" DEPTH MLD TO 2ND D.
27'12" UPPER D.

SCALE 1/2" = 1 FOOT.

TO CLASS 100 R.I. WITH FREE BOARD, CORRESPONDING TO A DRAFT NOT EXCEEDING THAT CONTEMPLATED BY THE RULES FOR A COMPLETE SUPERSTRUCTURE VESSEL HAVING A TONNAGE OPENING.

LLLOYDS NUMERALS

1. DEPTH D = 26.62
2. $L \times D = 290 \times 26.62 = 7720$
 $L \times (B+D) = 290(44+26.62) = 20480$
3. PROPORTIONS = $290/27.12 = 10.69$
4. FRAMING - d IN WAY OF No. 2 HOLD
10'08" - (1/2 DIFFERENCE BETWEEN RULE & ACTUAL BEAM KNEES)

d CLEAR OF No. 2 HOLD
= 16'08" - (1/2 DIFF. BETWEEN RULE & ACTUAL FRAME & BEAM KNEES)

EQUIPMENT NUMERAL

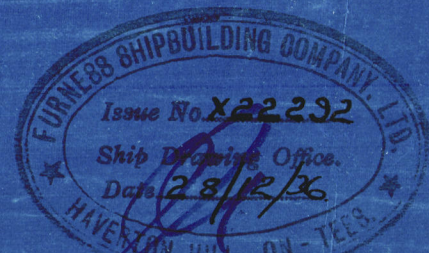
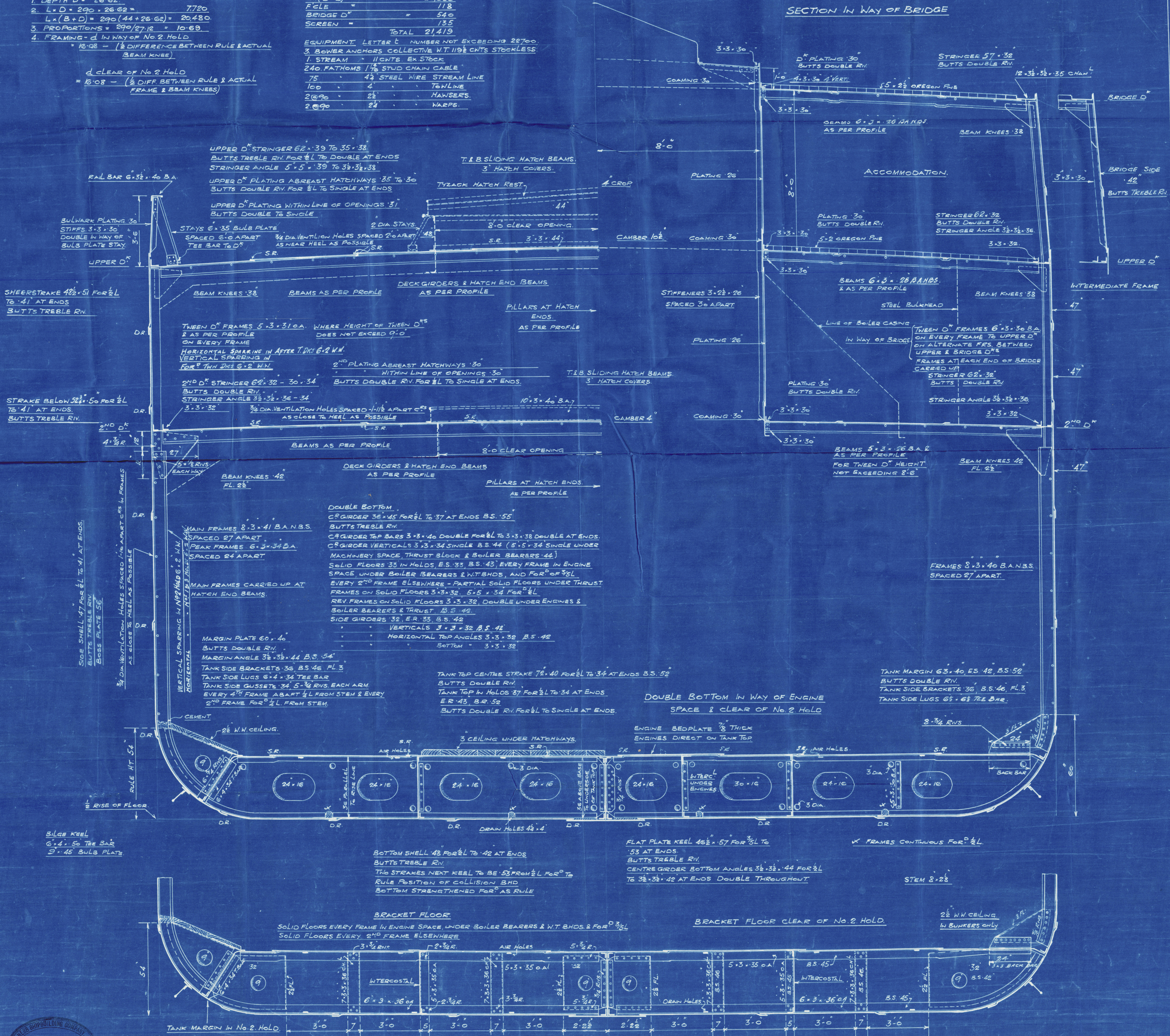
| | | |
|----------|---|--------|
| Lx(B+D) | = | 20,626 |
| F.C.E. | = | 118 |
| BRIDGE D | = | 540 |
| SCREEN | = | 135 |
| TOTAL | = | 21,419 |

EQUIPMENT LETTER C NUMBER NOT EXCEEDING 22700.
3. BOWER ANCHORS COLLECTIVE W.T. 1192 CENTS STOCKLESS
1. STREAM 11 CENTS EX STOCK
240 FATHOMS 1 1/2" STUD CHAIN CABLE
75 42 STEEL WIRE STREAM LINE
100 4 TONLINE
2090 22 HAWERS.
2090 24 WARPS.

OWNERS EXTRAS

ON PLAT OF BOTTOM WHERE IN CONTACT WITH GROUND - FLOORS & FRAME BOTTOMS TO BE NOT LESS THAN 3/16" THICK
SHELL BOTTOM FOR 3 STRAKES AMIDSHIPS TO BE INCREASED .04
TANK END FLOORS INCREASED 7/16" ABOVE RULE.
ADDITIONAL RIVETING ABOVE RULES TO TANK MARGIN CONNECTION IN FORE HOLD.

SECTION IN WAY OF BRIDGE



FURNESS S.B. Co.

No. 263

"CYPRIAN PRINCE"

MIDSHIP SECTION

AS BUILT.

W140-0033

Cyprian Prince
S.S. MDD. RPT. No. 15892.

RETAIN



© 2020

Lloyd's Register
Foundation