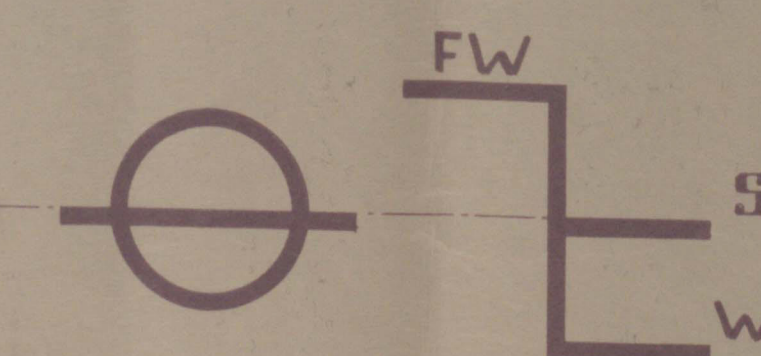


CAPACITY PLAN.

$$18244 t_o = 17956 t_s \text{ DW}$$


FRESH WATER			
BETWEEN EASERS	COMPARTMENT	CUBIC MET.	CUBIC FT. (FMS.)
15-31	ENGINE ROOM D.B. FEED WATER	61.8	218.2
42-46	" " " " FRESH WATER	58.6	206.9
	TOTALS	120.4	425.1
64-41	CULINARY WATER TANKS 2 DECK	47.4	167.4
	FRESH WATER TOTALS	167.8	592.5

CARGO HOLD			
BETWEEN FRAMES	COMPARTMENT	GRAIN CUBIC MET. CUBIC FT.	BALES CUBIC MET. CUBIC FT.
80 - 96	TWEEN DECK HOLD	6070 23555	6050 213

3,07m LIGHT DRAFT 10' $\frac{7}{8}$ "
7350 to LIGHT DISPL. 7235 ts.

A circular purple ink stamp. The outer ring contains the text "Bremer Vulkan" at the top and "Vegesack" at the bottom, separated by two small stars. The center of the stamp contains the date "12. Jan. 1933" and the text "Schiffbau und Maschinenfabrik" below it. A handwritten number "41" is visible in the center, partially overlapping the date and the company name.

BREMERVULKAN VEGESACK
SCHIFFBAU UND MASCHINENFABRIK
1932.

CAPACITY PLAN.
SCALE 1:200.

TWIN SCREW MOTORSHIP:

M.S. "VICTOR ROSS."

"Victor Ross"
Capacity plan.



© 2020

Lloyd's Register

WU39-0197