

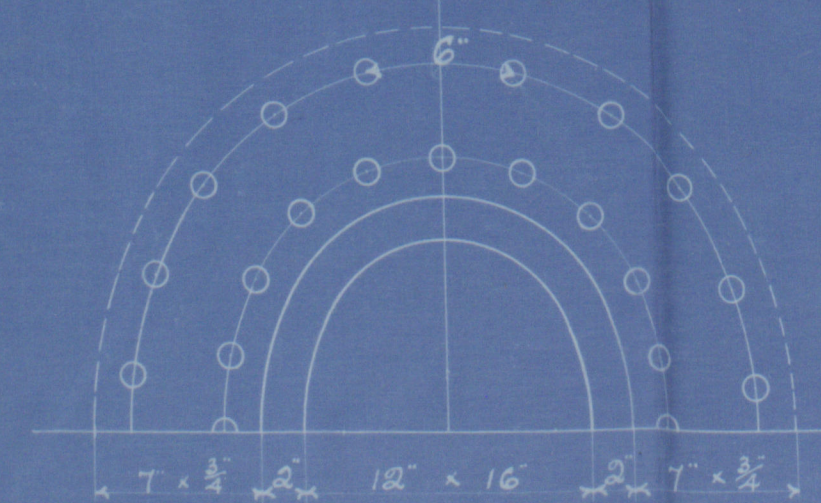
STEEL BOILER 11-0 DIA 11-0 LONG 120 LBS W.P. LLOYDS

5577

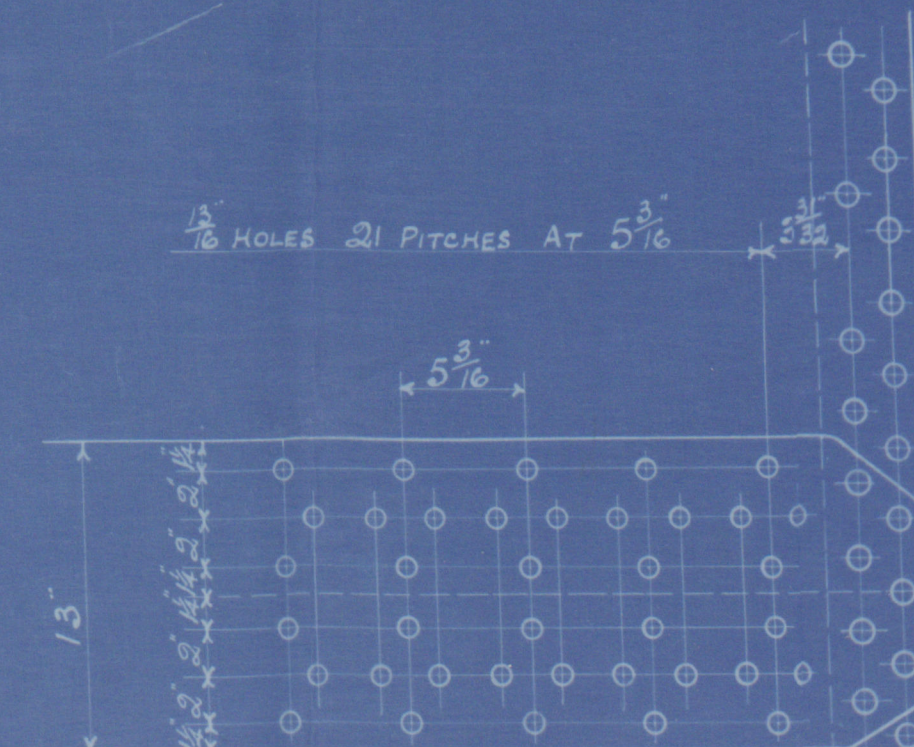
3/11/24

SPECIFICATION OF MATERIALS

SHELL STRAPS GIRDERS & MAINSTAYS 28 TO 32 TONS.  
BALANCE OF PLATES RIVETS & SCREW STAYS 26 - 30 "



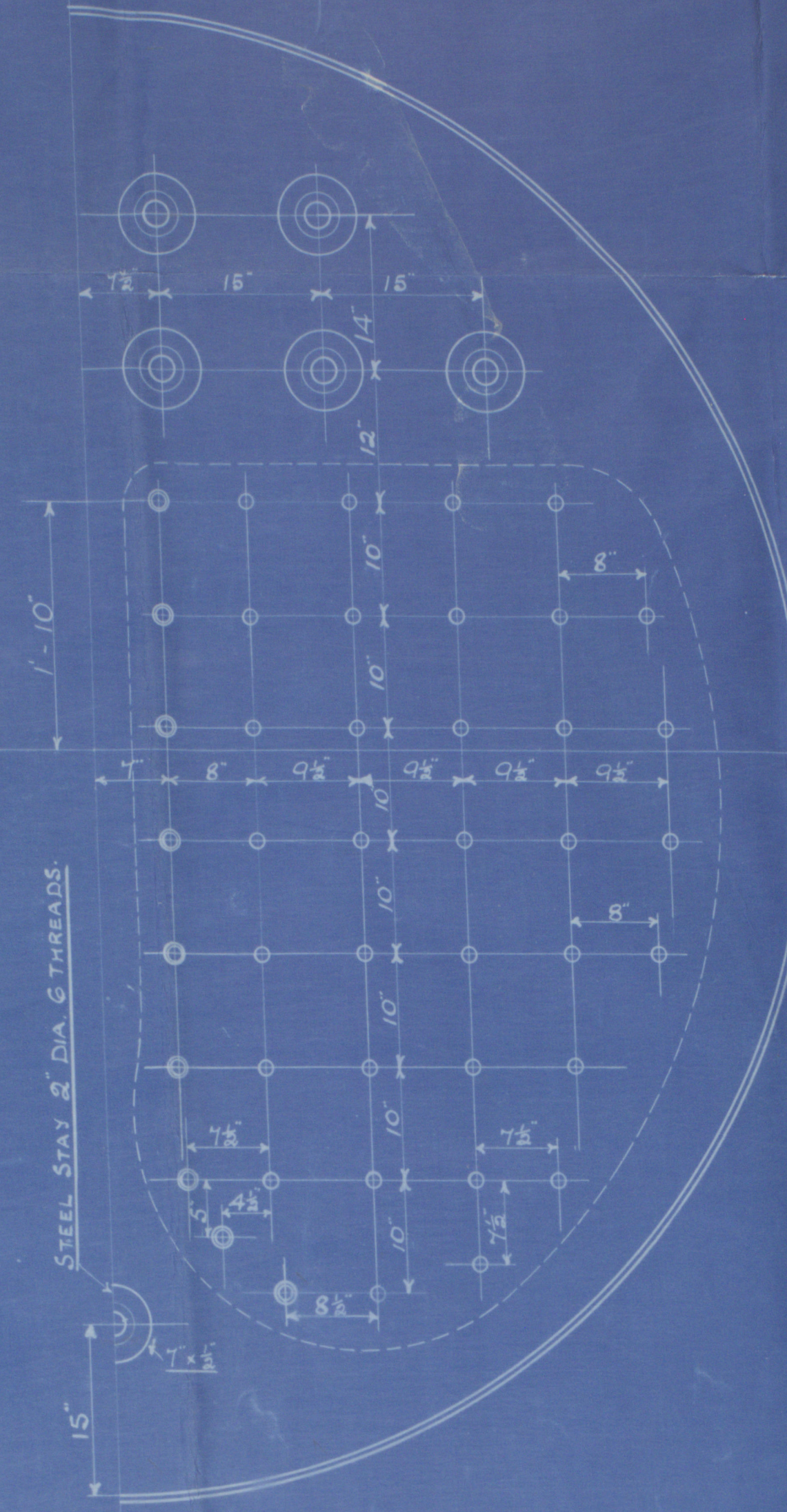
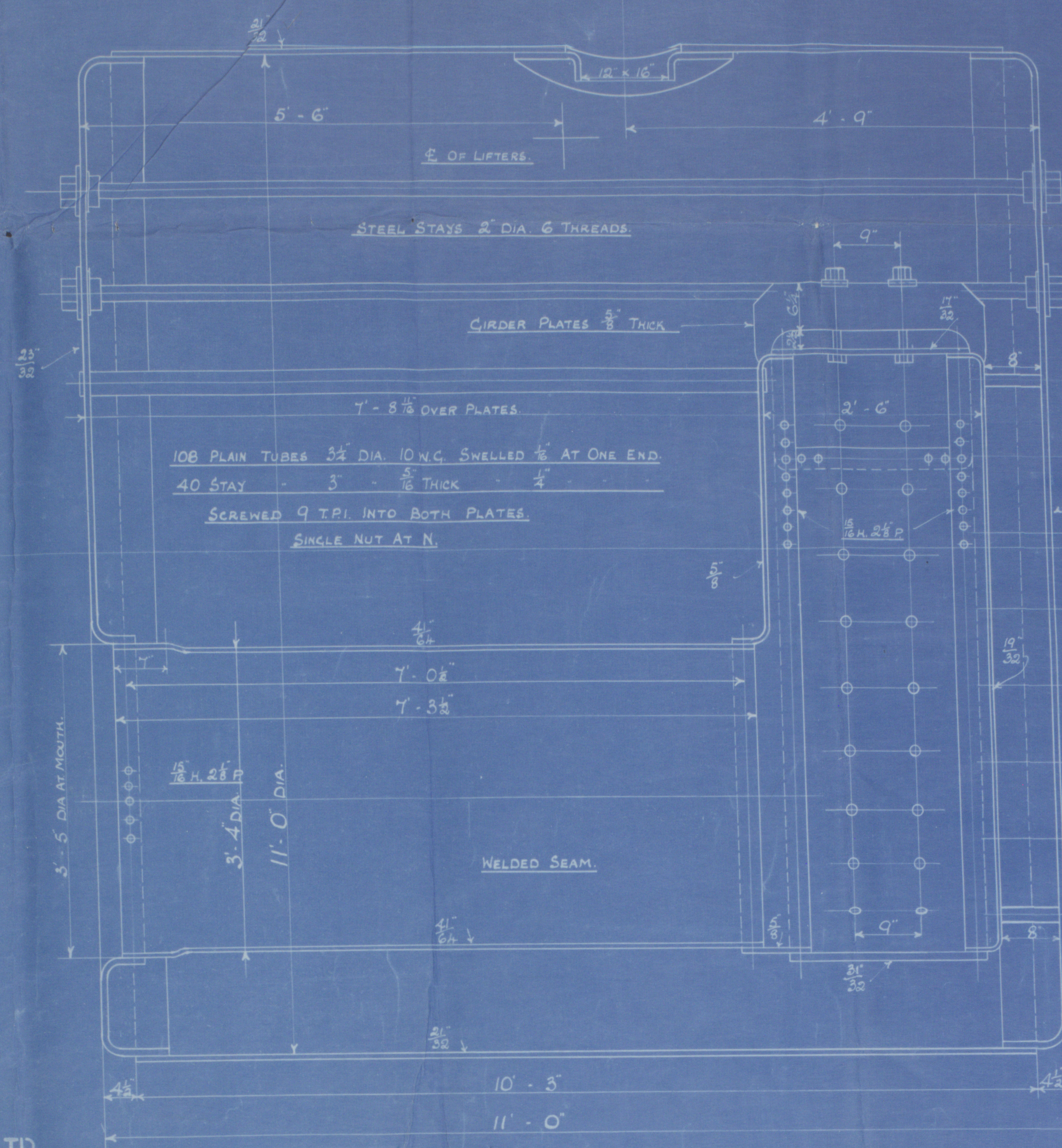
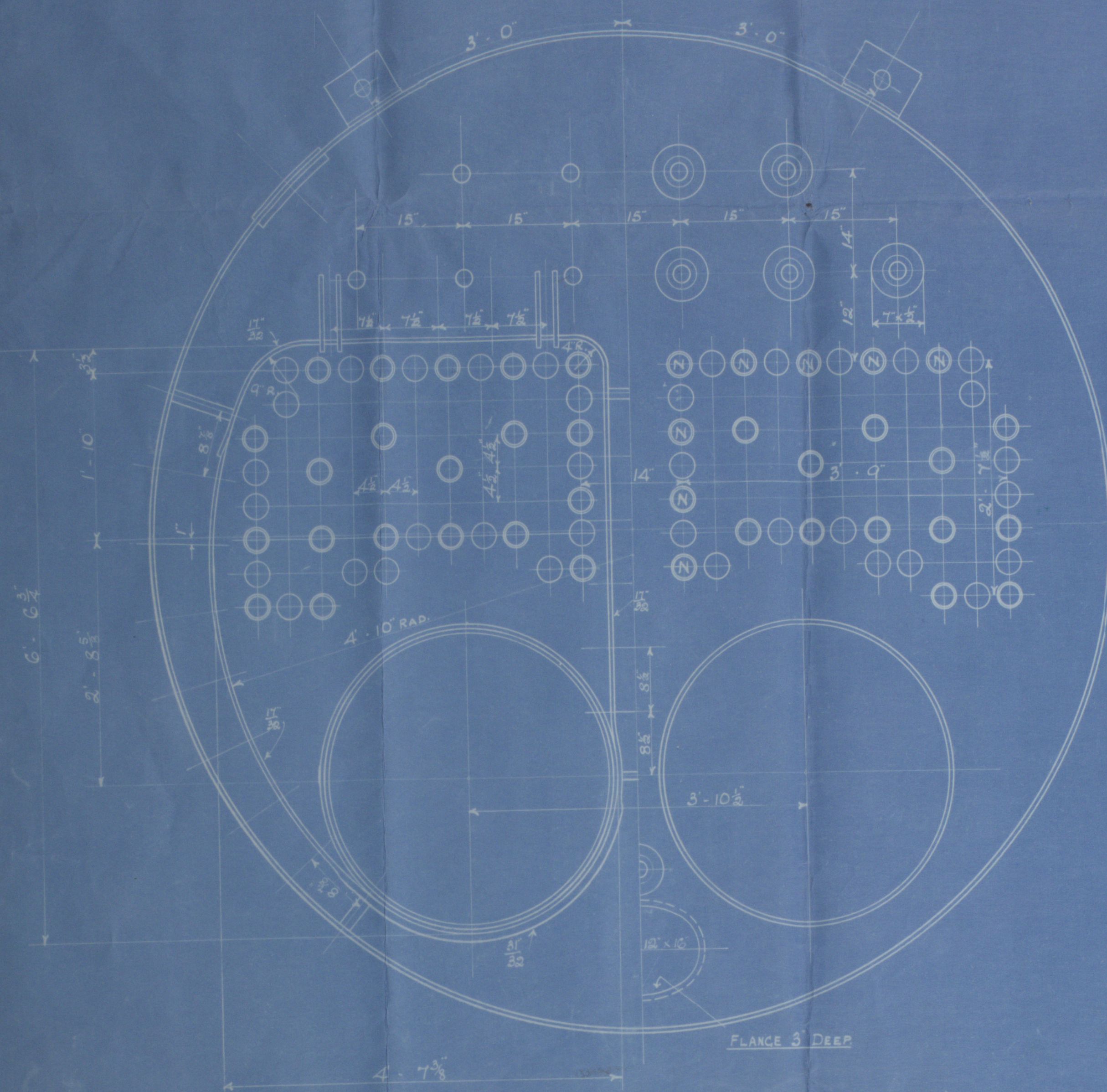
MANHOLE RING RIVETING  
40 - 16 H. ABOUT 3 1/2 P. AT INNER ROW



OUTER STRAP 1 1/2" THICK  
INNER 1 1/2"

CIRCUM. SEAMS 16 H. 3 P. DOUBLE RIVETING  
CONTINUOUS BELOW FURNACE

COMBUSTION CHAMBER SCREW STAYS  
SCREENED 9 TPI. NUTTED AT ENDS  
AT BACK MARK 1 1/2" DIA.  
AT SIDES 1 1/2"  
AT TOP IN GIRDERS 1 1/2"



HEATING SURFACE 1175 sq. ft.  
GRATE AREA (5'-6" BARS) 35 sq. ft.

209

RILEY BROS. (BOILERMAKERS) LTD  
STOCKTON ON TEES

96. 1139  
3/11/24



Messrs Riley Bros.  
Boiler No 5577  
for.

Messrs Wm Dobson & Sons.

Working Press 120 lbs  
Duplicate of No 5551.

**MIDDLESBROUGH**

Rpt No 11205.

-9 JAN 1925

West Walls  
**NEWCASTLE ON TYNE.**

Report No. 79027



© 2020

Lloyd's Register  
Foundation

W1139

-6133