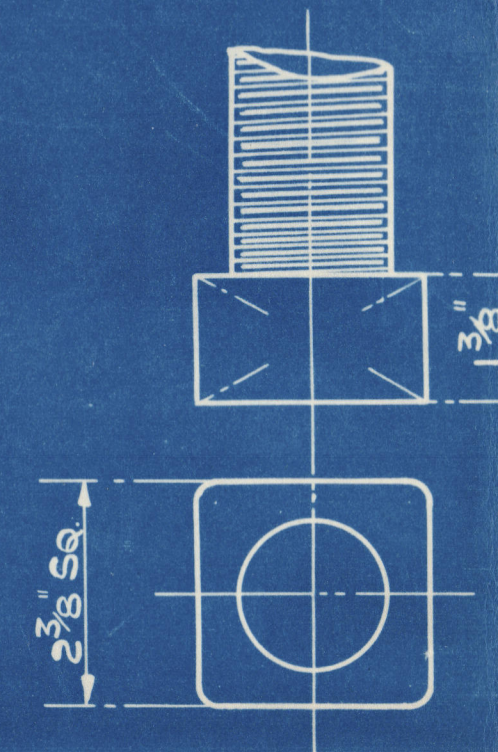


16"x12" MANHOLE FITTED
WITH FLAT PLATE TYPE DOOR
RECESS MACHINED OUT
SOLID PLATE.



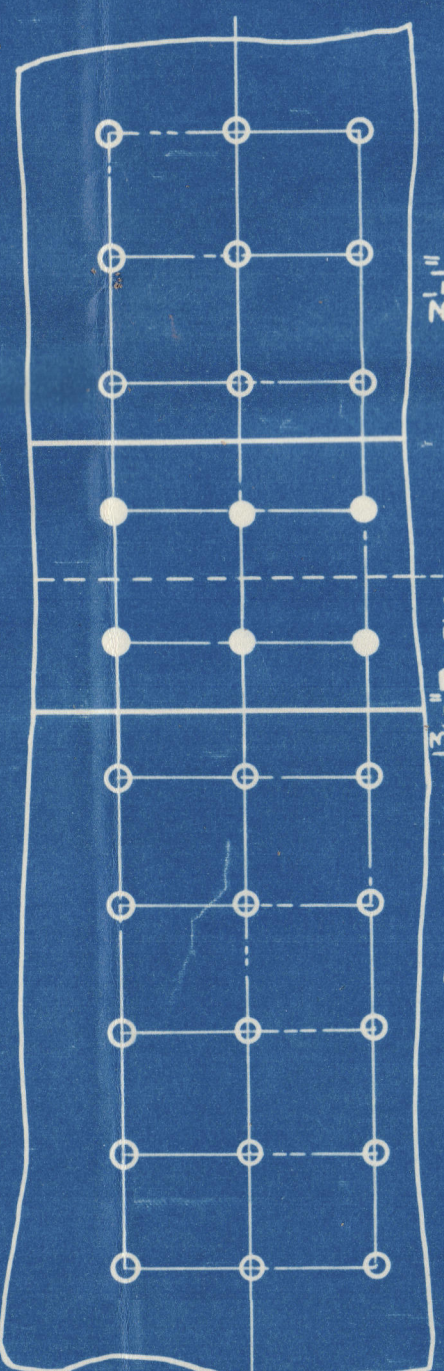
DETAIL OF HEAD FOR
GIRDER STAYS.
HALF SIZE.

MANHOLE COMPENSATING RING.
38 RIVETS 1/4 DIA. 1 1/2 DIA. HOLES.

FOR POSITION OF SHELL MANHOLE
SEE BOILER MOUNTING DRAWING.

STAYS TO BE SCREWED THRO' FRONT & BACK PLATE.
ENDS OF STAYS TO BE CAULKED ONLY
BEFORE NUTS ARE SCREWED ON.

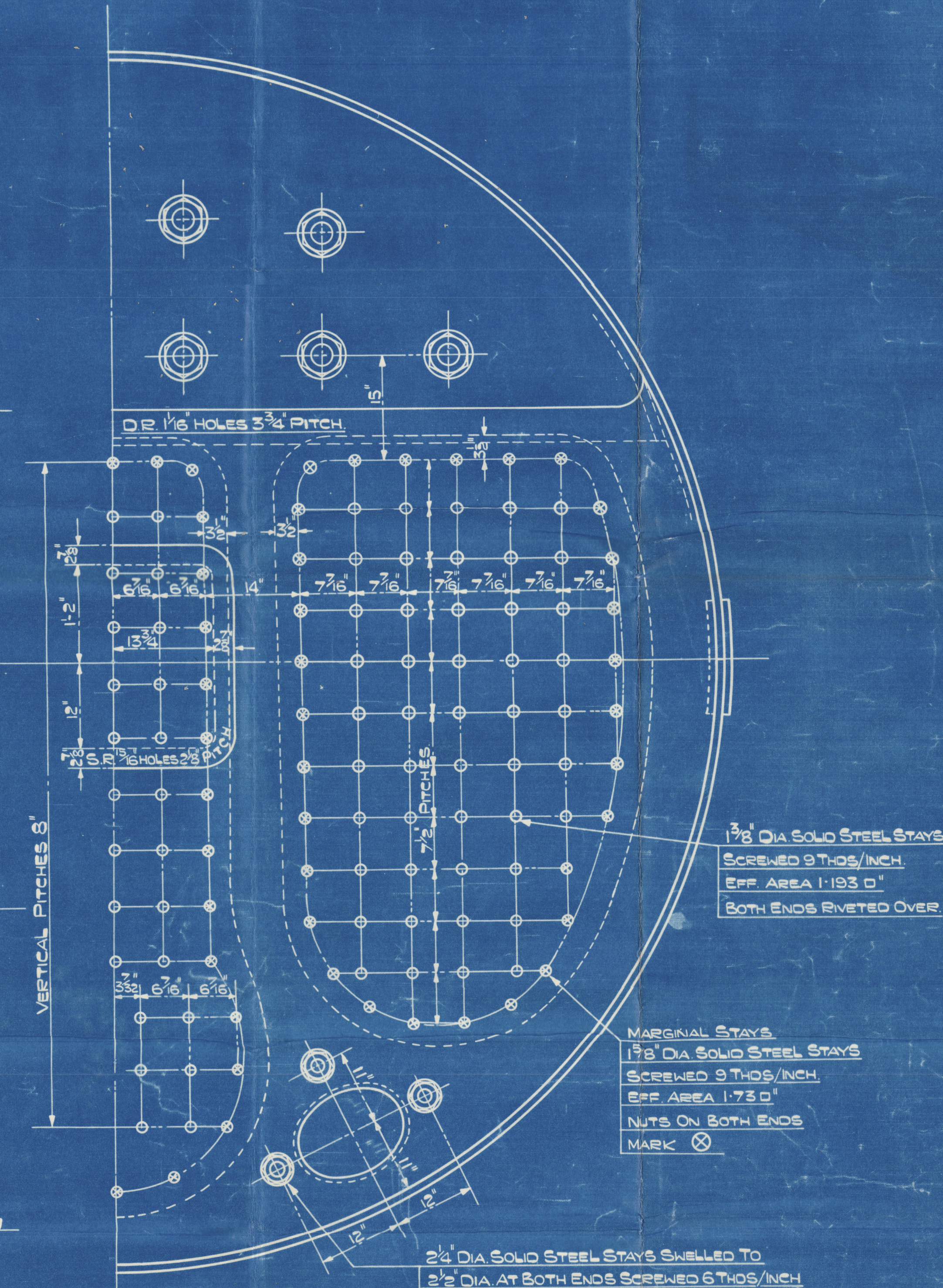
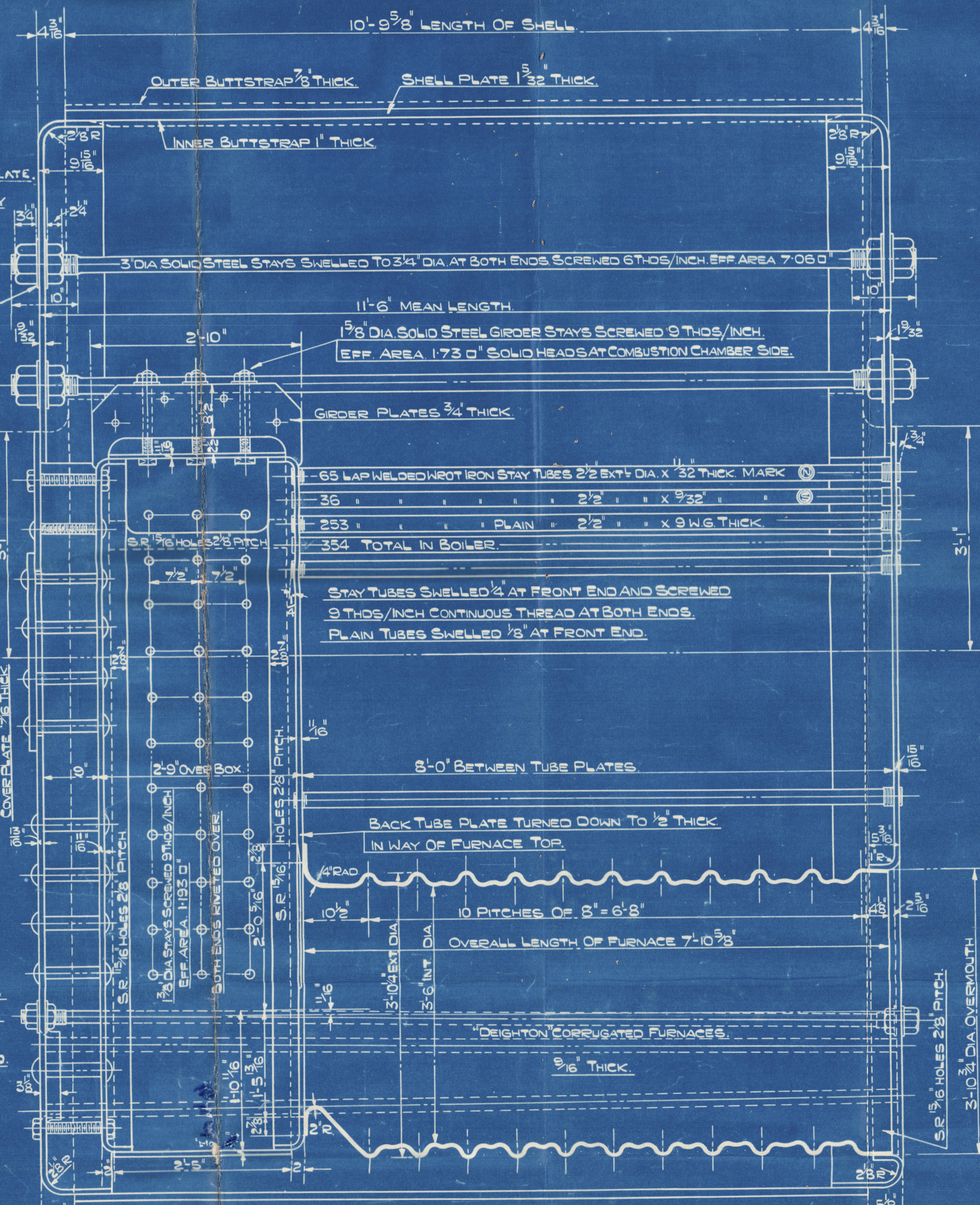
WASHERS 1/4 THICK.



STAYS BETWEEN C.C. & SHELL.
1 1/8 DIA. STAYS SCREWED 9 THOS/INCH.
EFF. AREA 1.1935'

SCREWED THRO' SHELL & CAULKED.
OTHER END RIVETED OVER.

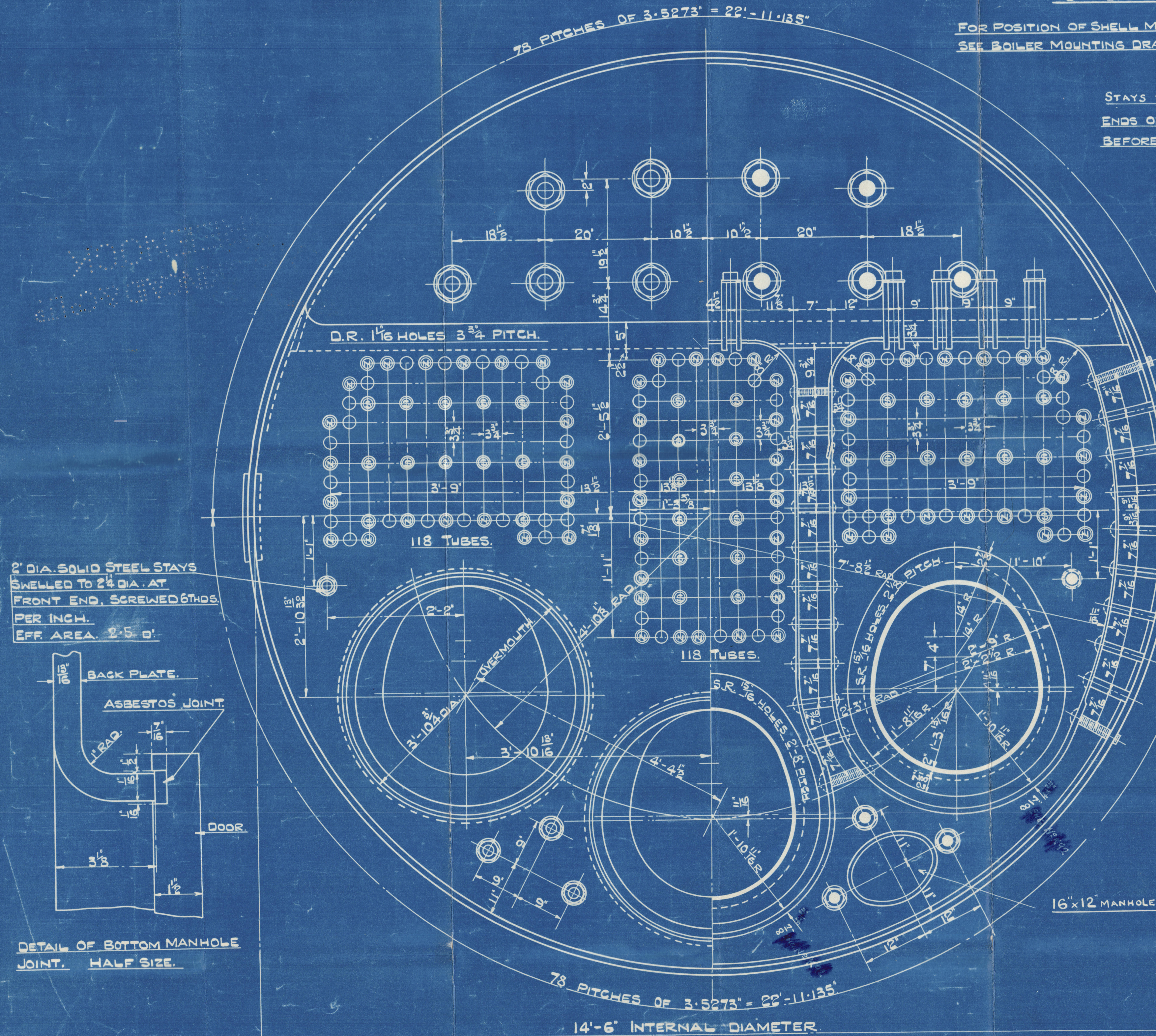
16"x12" MANHOLE



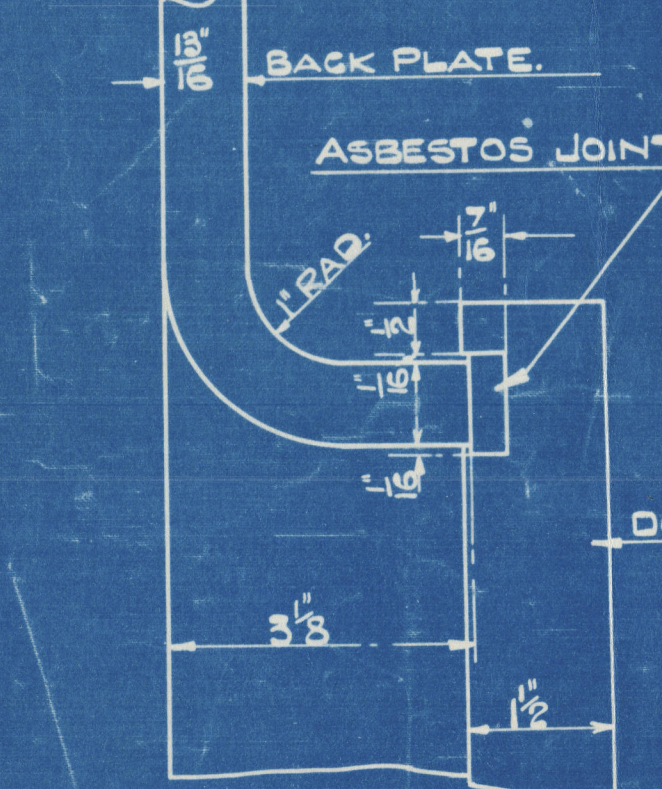
1 1/8 DIA. SOLID STEEL STAYS
SCREWED 9 THOS/INCH.
EFF. AREA 1.1935'

MARGINAL STAYS.
1 1/8 DIA. SOLID STEEL STAYS
SCREWED 9 THOS/INCH.
EFF. AREA 1.730'

2 1/2 DIA. SOLID STEEL STAYS SHELLED TO
2 1/2 DIA. AT BOTH ENDS SCREWED 6 THOS/INCH
EFF. AREA = 3.970'



2" DIA. SOLID STEEL STAYS
SHELLED TO 2 1/2 DIA. AT
FRONT END, SCREWED 6 THOS.
PER INCH.
EFF. AREA 2.500'



DETAIL OF BOTTOM MANHOLE
JOINT. HALF SIZE.

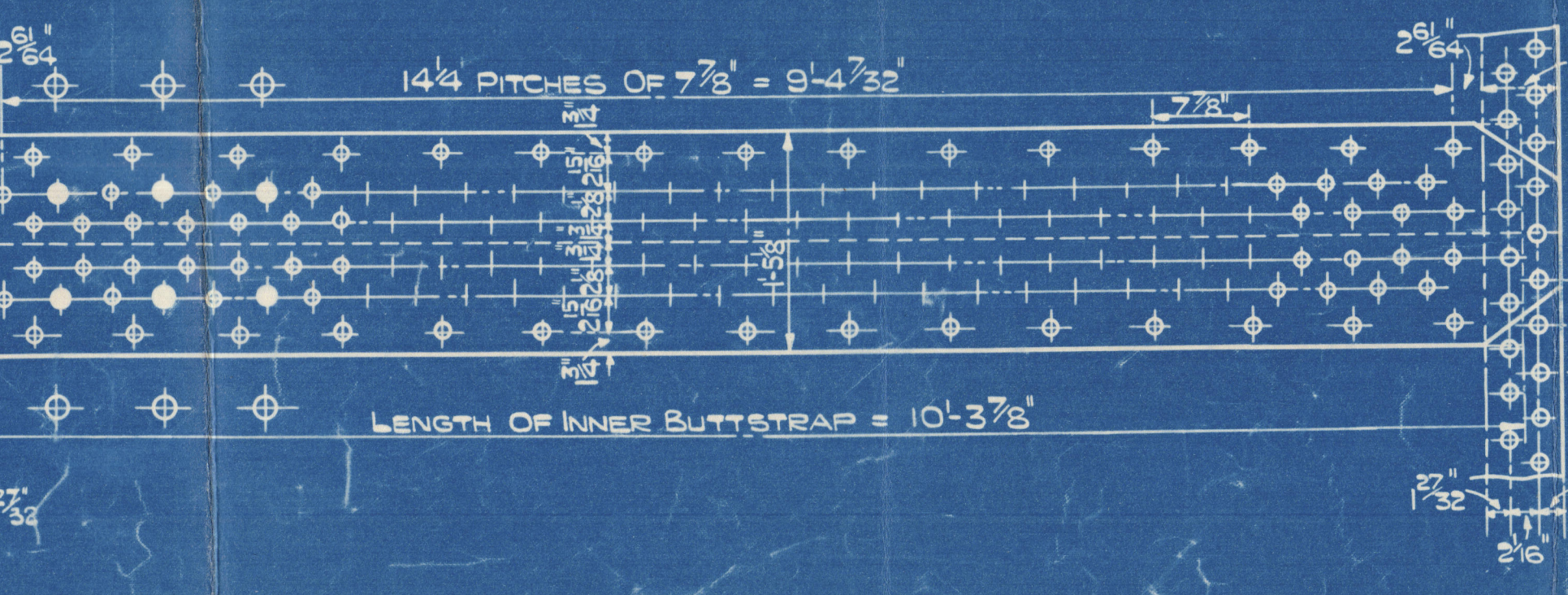
ALL PLATES, STAYS & RIVETS OF SIEMENS-MARTIN MILD STEEL.
TUBES OF LAP WELDED WROT IRON.
LONG SEAMS DOUBLE BUTTSTRAPS TREBLE RIVETED.
CIRC. SEAMS DOUBLE RIVETED LAP.
WORKING PRESSURE 180 LBS. PER SQ. INCH.
TEST PRESSURE 320 "
ALL RIVET HOLES TO BE DRILLED AFTER PLATES ARE BENT & FITTED
TOGETHER, THEN PLATES TAKEN APART & BURRS REMOVED.
RIVETING BY HYDRAULIC PRESSURE WHERE PRACTICABLE.

A.H.M.
J.W.G.S.W.
A.H.M.

STRENGTH OF MATERIAL		
	THICKNESS	TENSILE
SHELL PLATES.	5/32	29-33 TONS/0'
INNER BUTT STRAPS.	1	29-33 "
OUTER "	7/8	29-33 "
GIRDER PLATES.	3/4	29-33 "
TOP ENDS.	1 1/2	26-30 "
FRONT BOTTOM END.	1 1/2	26-30 "
BACK "	1 1/2	26-30 "
BACK TUBE PLATES.	1 1/2	26-30 "
C.C. BACKS.	1 1/2	26-30 "
WRAPPERS.	1 1/2	26-30 "
FURNACES.	9/16	26-30 "
MANHOLE COMPS. RING.	1 1/2	26-30 "
COVER PLATE.	1 1/2	26-30 "
LONG STAYS MILD STEEL.	—	26-30 "
C.C. STAYS "	—	26-30 "
RIVET BARS.	—	26-30 "

HEATING SURFACE.	SQUARE FEET.
354 TUBES.	1854
FURNACES.	319
COMBUSTION CHAMBERS.	329
TOTAL PER BOILER.	2502
AREA THRO' TUBES.	8.61

BOILER OIL BURNING IN CONJUNCTION WITH FORCED DRAUGHT
AND AIR HEATING. DIESEL ENGINE EXHAUST GAS TO ALL FURNACES.
RETARDERS IN TUBES.



SEAM.	DIA. OF RIVET.	DIA. OF HOLE.	PITCH.	PLATE % RIVET % COMB. W.P. OF SHELL BY RULE.
LONG. JOINT.	1 1/2	1 1/2	7 1/2	85-32 85-75 87-79 180-35 LBS/0'
CIRCUM.	1 1/2	1 1/2	3-5 2/3	65-4 45-3

Duplicate of 1192 1/8" *Quanta*
date 25/12/34
J.M.M. 25/12/34

BOILER.
DIESEL ENC. NO. K 74/R-K 92/R.
K. 96-97/R.

J.D.P.
28/2/36.
W.G.

TO PASS LLOYDS TESTS & REQUIREMENTS.

ONE OFF.

SCALE: 1" = ONE FOOT.

25TH DECEMBER 1933

APPROVED BY LLOYDS-3-1-34. K 74.

20-9-35 K 92.

DRC. NO. 8200.

W1138-0105

Albacore Boilers

Muscaid K96-97

Blythwood H3-44

Duplicate of K92 M's "Amara"
Link repl. No. 19920

M.V. "SAN CASIMIRO"

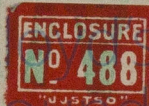
GRK. REPORT NO 20298.

M.V. "ADULA"

GRK. REPORT. NO 20349.



© 2020



Registered
Foundation