

Nº 43
MIDSHIP SECTION -

SCALE 1/2" = 1 FOOT.

EQUIPMENT NUMERALS	
L x (B+D) 460 (59 + 34)	= 42700 00
POOP 92.75 x 75 x 3/4	= 521 55
BRIDGE 46.12 x 75 x 3/4	= 259 42
FILE 46.12 x 75 x 3/4	= 343 33
BRIDGE HOUSE 39 x 75 x 1/2	= 146 25
POOP CASING 76 x 80 x 1/2	= 304 00
EQUIPMENT NUMBER	44354-32

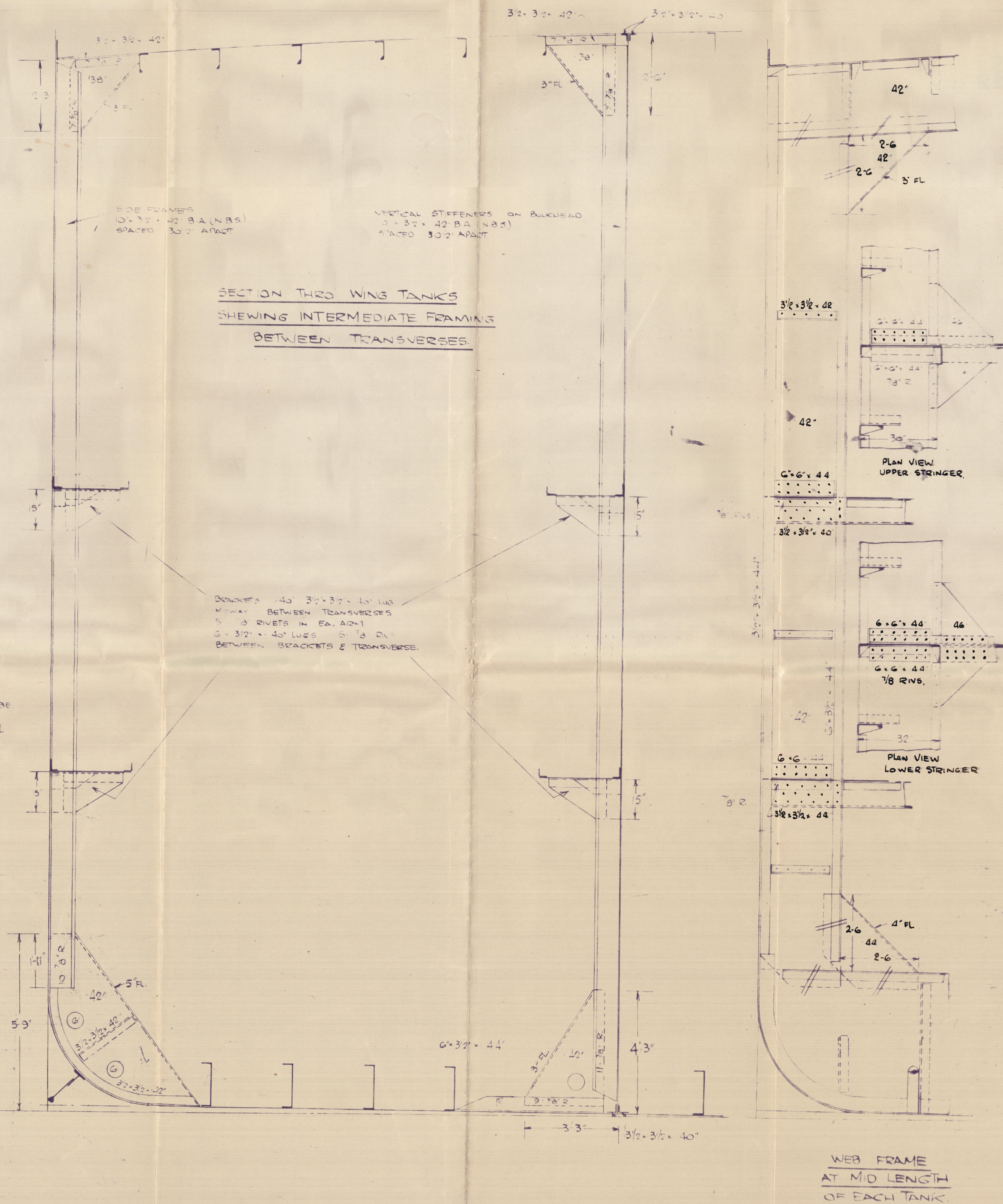
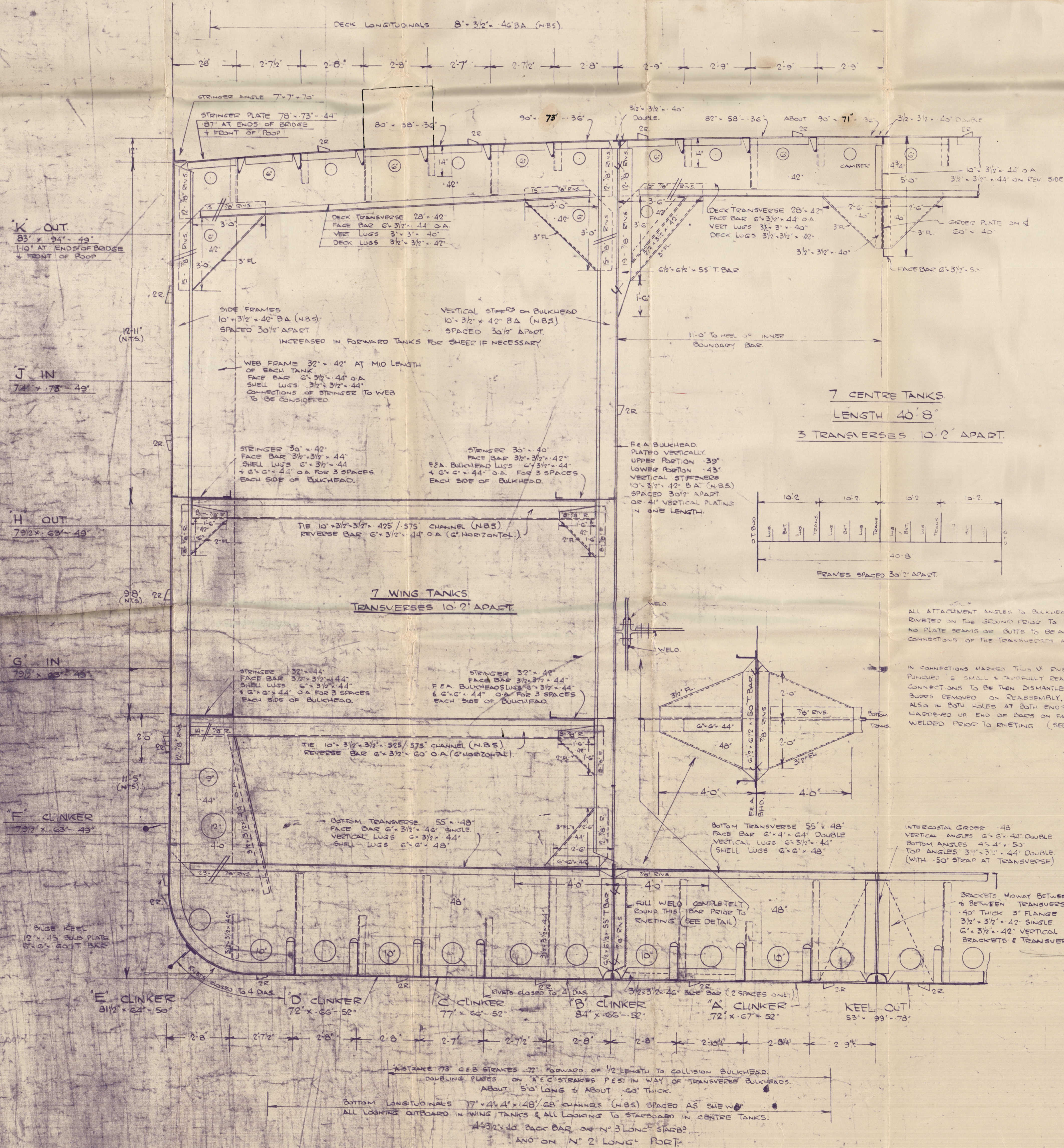
EQUIPMENT	
2 BOWER ANCHORS	77 cwt
1 BOWER ANCHOR	65 1/2
1 STREAM ANCHOR	22 (E-Stock)
300 FATHOMS 2 1/2" STUD LINK CABLE	
120 FATHOMS 5" STREAMWIRE	
130 FATHOMS 5 1/4" TOWLINE	
2-100 FATHOMS 3 1/4" HAWSER	
2-100 FATHOMS 3 1/4" WARD	

DIMENSIONS
LENGTH 460'-0" B.P. BREADTH 59'-0" M.D. DEPTH 34'-0" M.D.

TO CLASS LLOYDS 100 A1 * CARRYING PETROLEUM IN BULK.
SPECIAL NOTATION LONGITUDINAL FRAMING ON BOTTOM AND AT DECK
SCANTLINGS CLEAR OF OIL COMPARTMENTS TO BE SPECIALLY CONSIDERED
SUITABLE INCREASES TO BE MADE FOR SHEER AT ENDS

Two 3'-0" OPENINGS ALLOWED FOR IN FULL WIDTH OF SHIP.

NUMERALS	
LENGTH B.P. ON LWL	L = 460'-0"
BREADTH M.D.	B = 59'-0"
DEPTH M.D. TO UPPER D	D = 34'-0"
L x D 460.0 x 34.0	= 5640 0
L x B x D 460 (59.0 + 34.0)	= 22780 0
L/D 460 / 34.0	= 13.52



WEB FRAME
AT MID LENGTH
OF EACH TANK

W1138-0104

Blythwood S. B. Co Ltd

43

San Casimiro

Midship Section
(As built)

GLASGOW REPORT No. 57790

RETAIN



© 2020

Lloyd's Register
Foundation