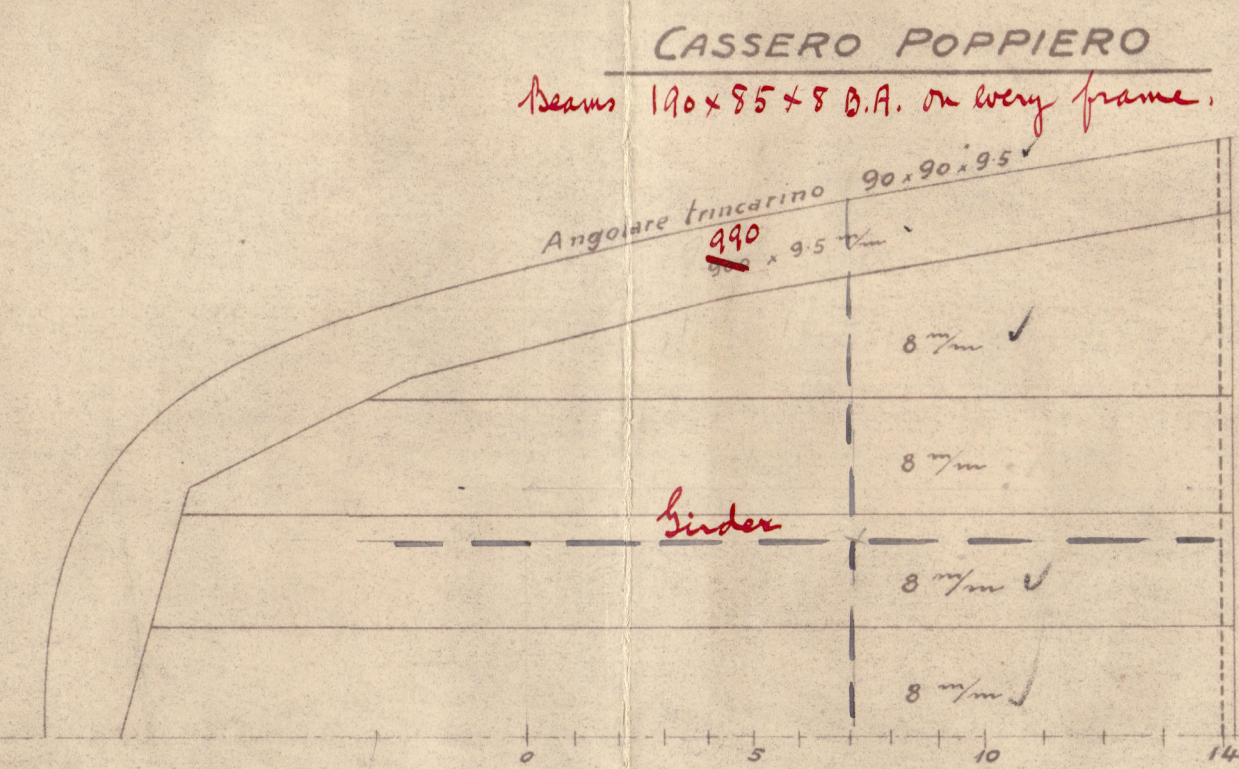


MOTONAVI N° 748-749

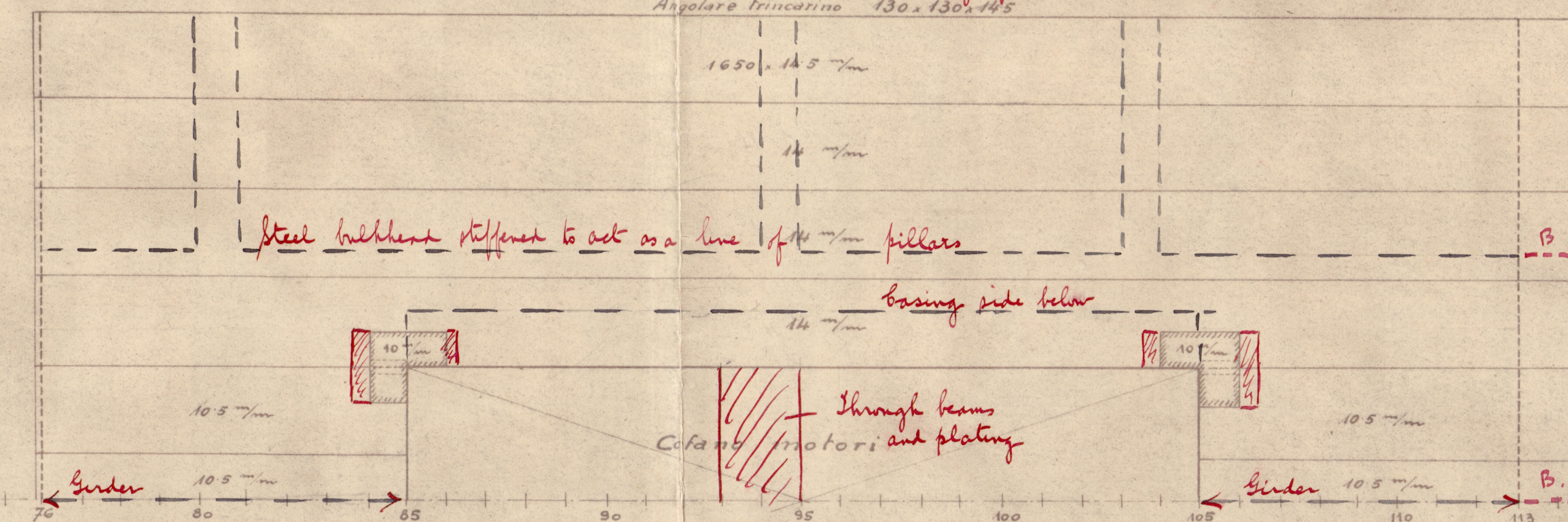
PIANO DELLE COPERTE PER LA CLASSIFICA
Classe Registro Italiano 100 As 1-L *
Classe Lloyd's Register of Shipping 100 A1 *

Dimensioni principali Lunghezza 147.75 m - 484.74' *
Larghezza 18.90 m - 62.00' *
Puntate 10.65 m - 34.94' *
Le erezioni di primo ordine, Cassero centrale, Cassero poppiero e provano danno una sovrastruttura complessiva di cda 36.32'



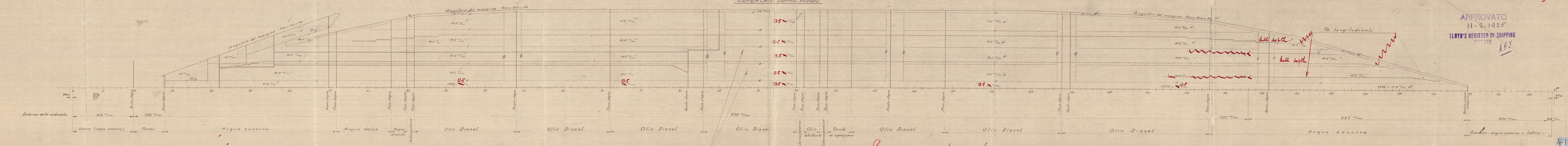
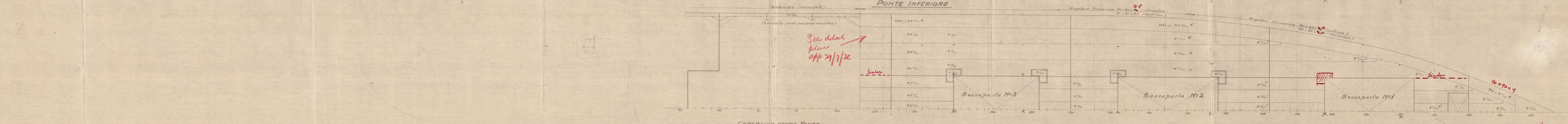
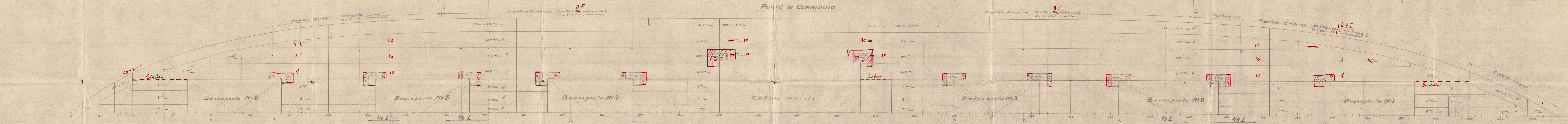
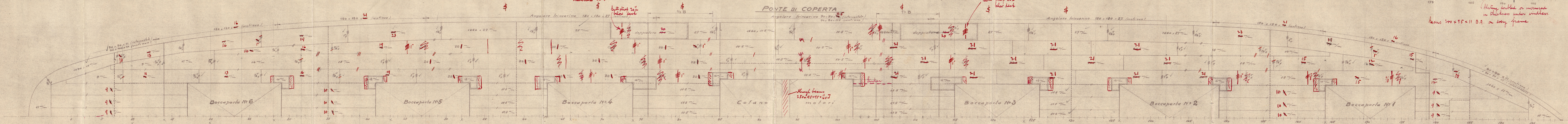
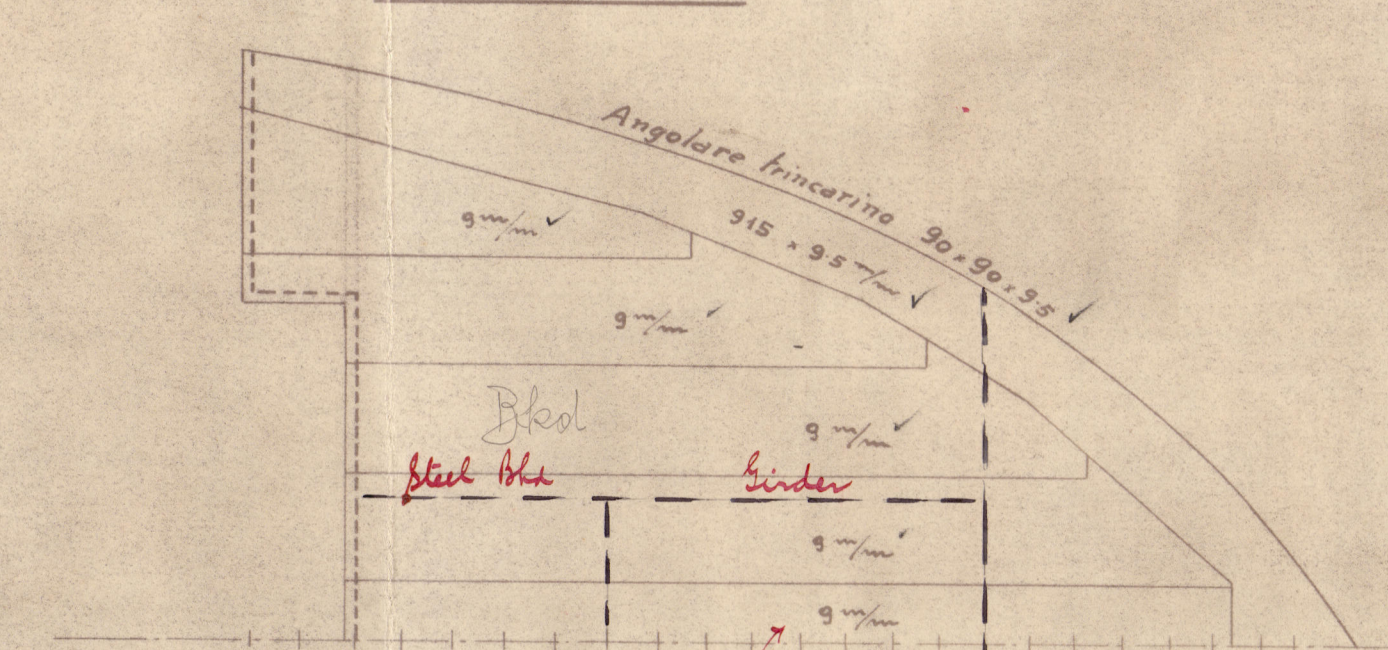
CASSERO CENTRALE

Beams 100x55x11 B.A. on every frame
Angolare trincerino 130x130x12



CASTELLO

Beams 100x55x11 B.A. on every frame
Angolare trincerino 90x90x12



APPROVATO

11.2.1926

LLOYD'S REGISTER OF SHIPPING

100 A1

748-749

MOTONAVI

PIANO DELLE COPERTE

PER LA CLASSIFICA

100 A1

1:100

Lloyd's Register

Foundation

W1138-0025

W1138-0025

S.T.T. Nos 748 & 749

Approved Deck plan

(4)

See plan Modification of Bridge (or.)

M/V Romolo

Trust Rept 7/3/75



© 2020

Lloyd's Register
Foundation