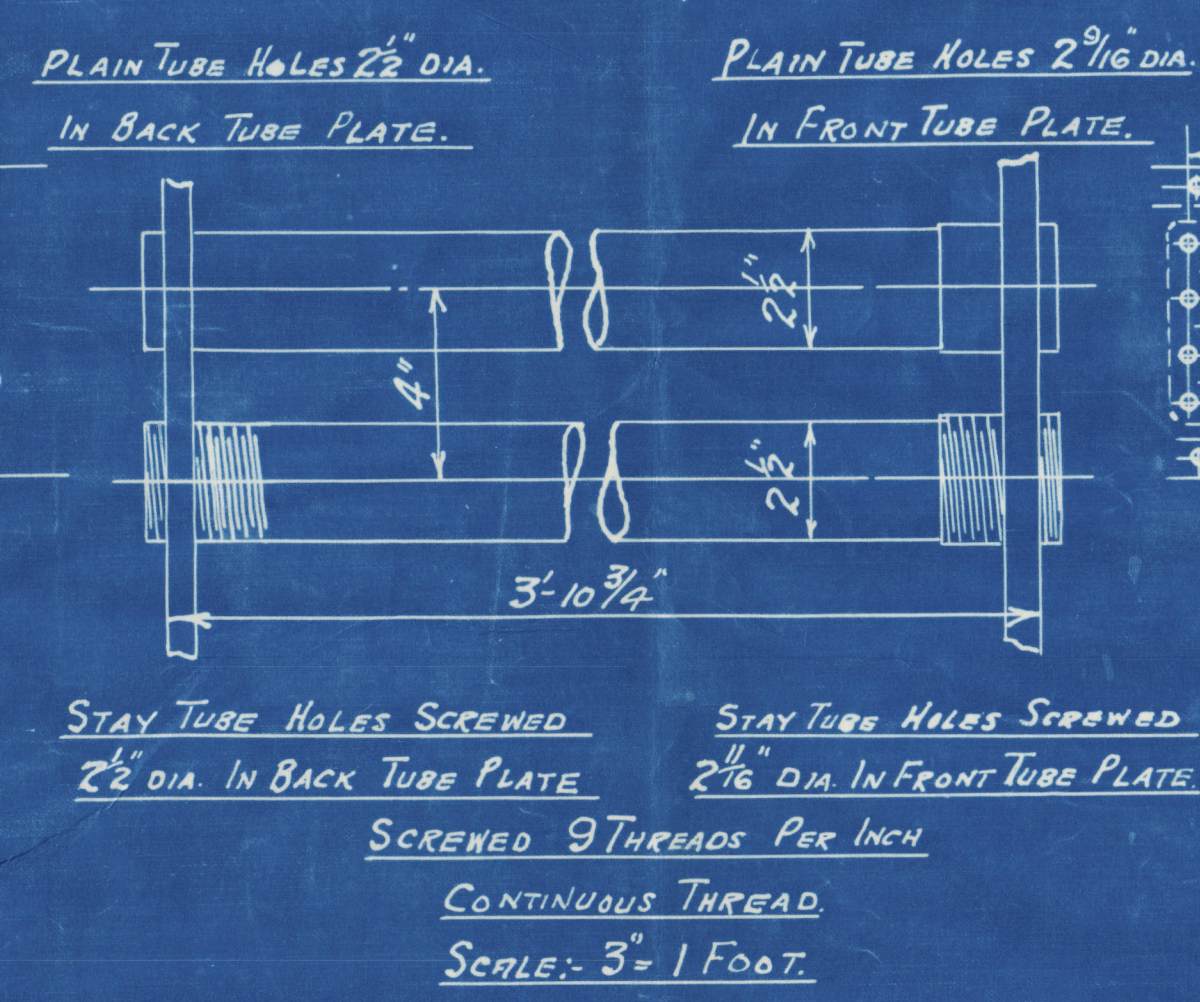
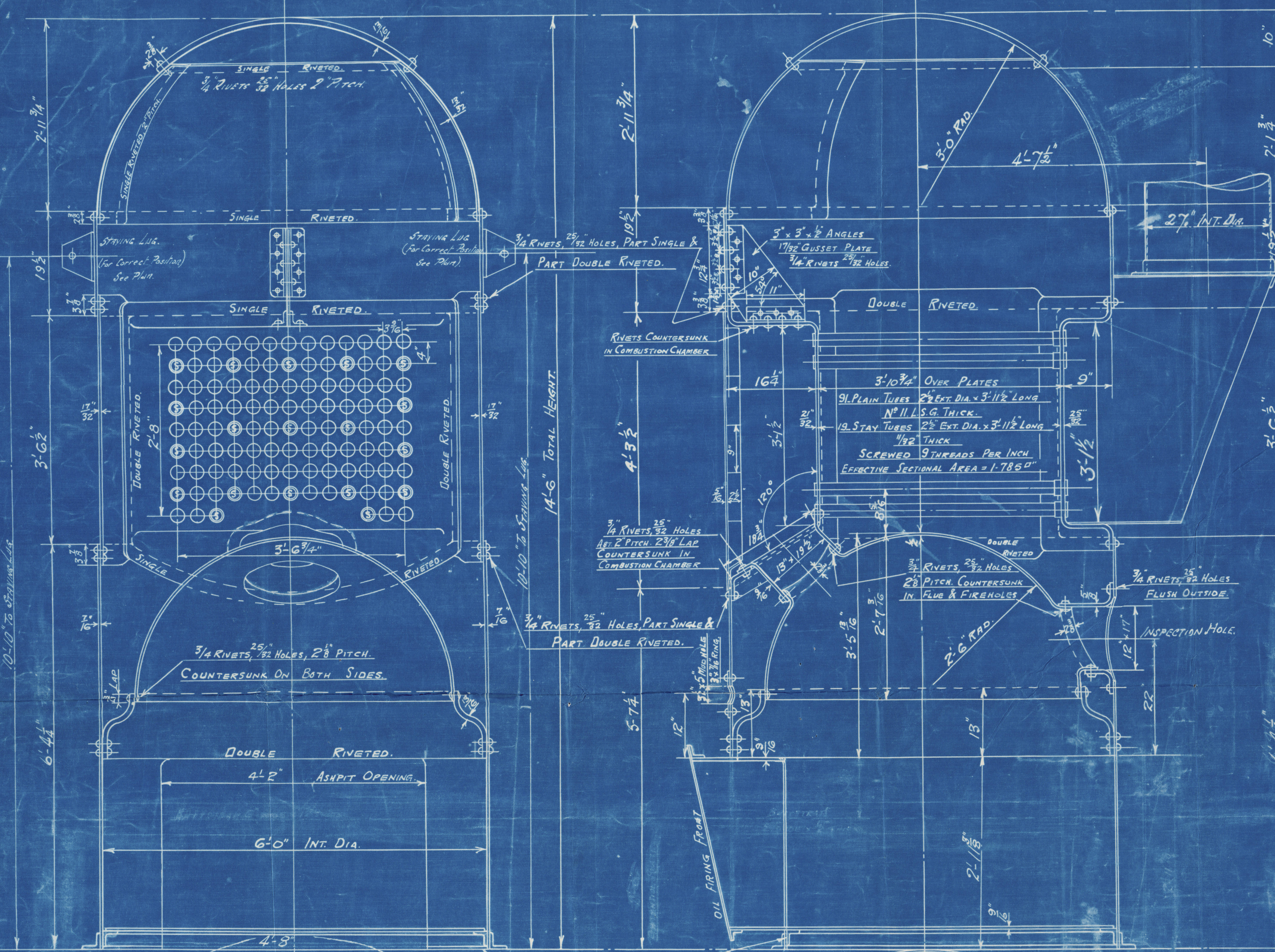


COCHRAN PATENT VERTICAL MULTITUBULAR BOILER

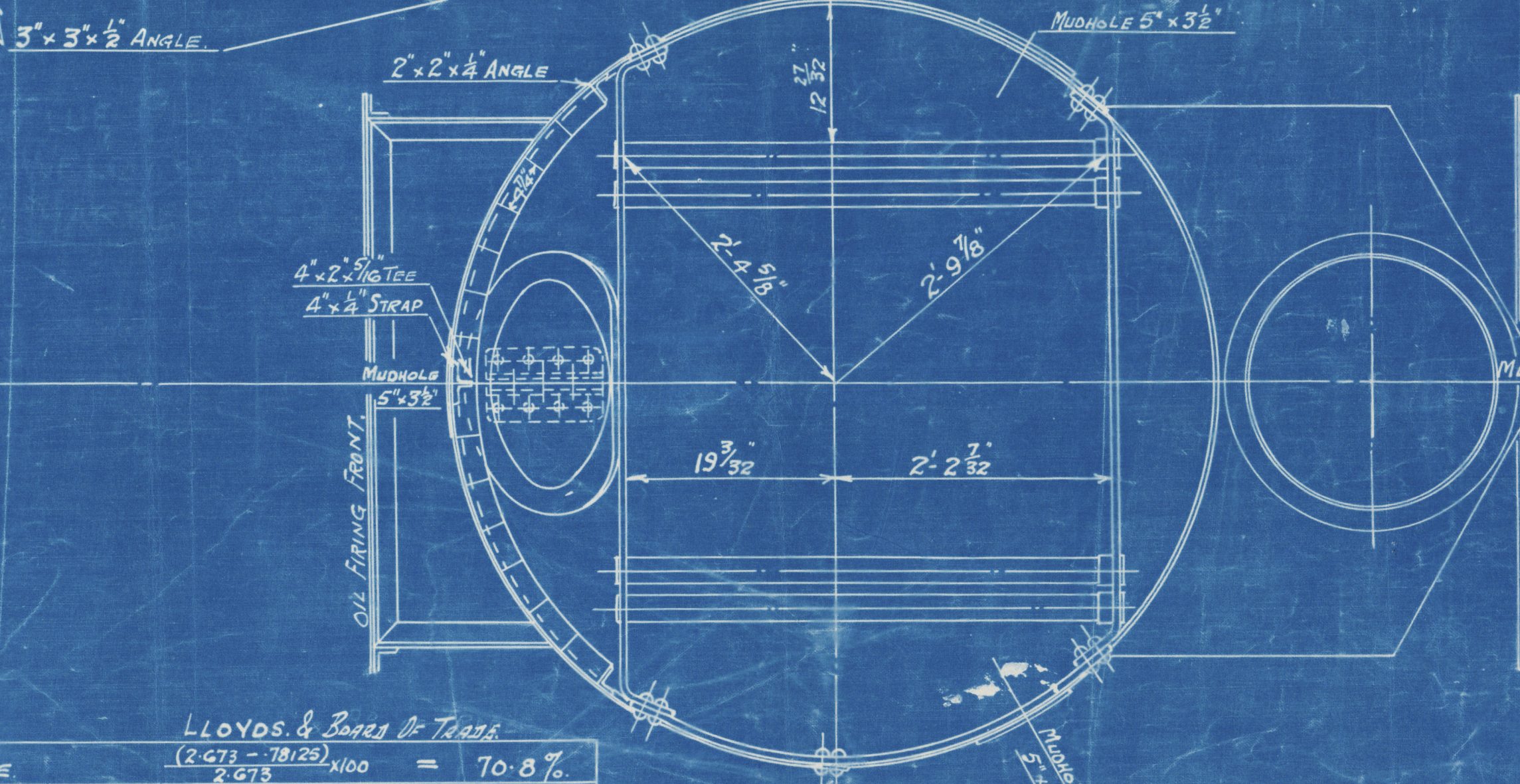
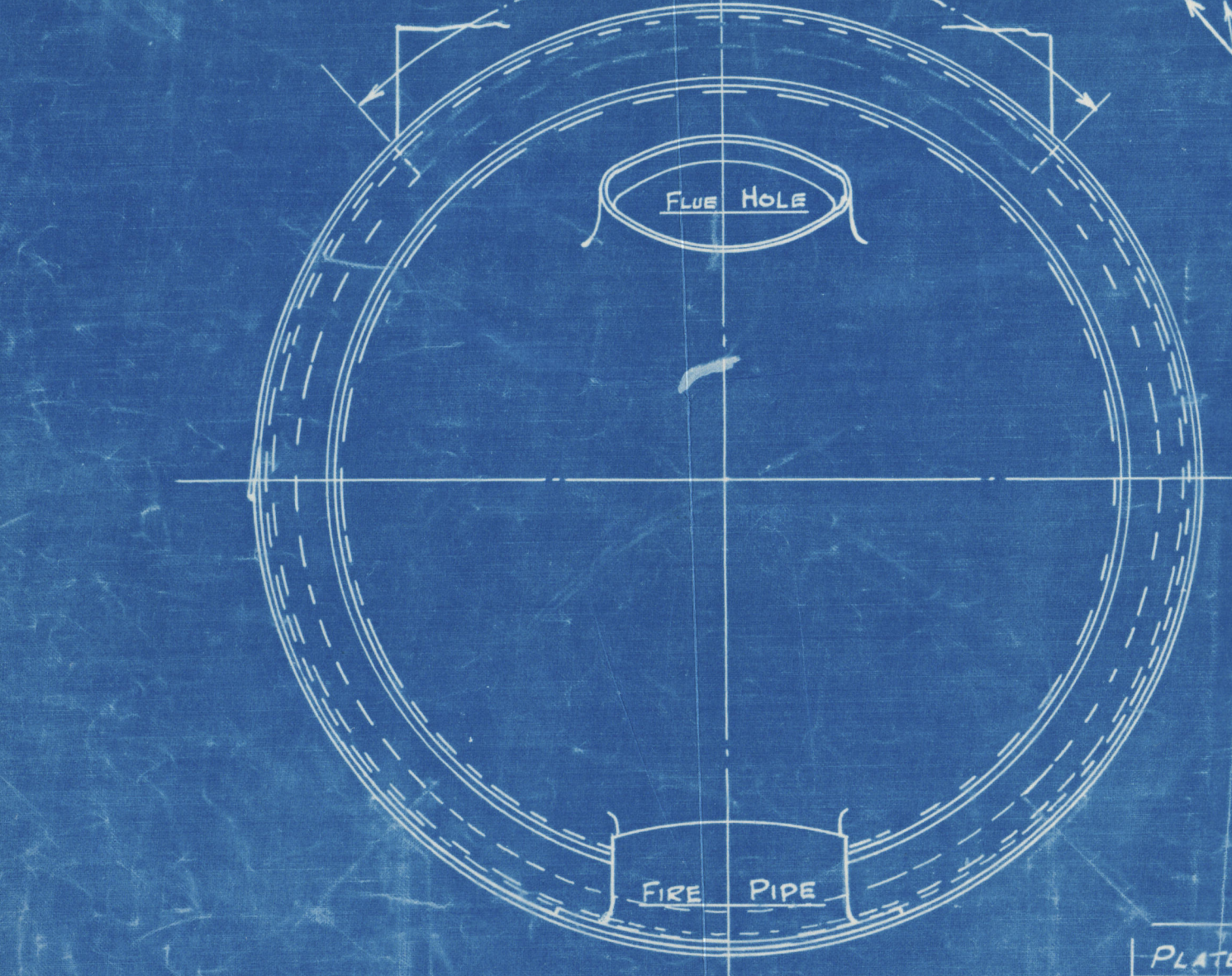
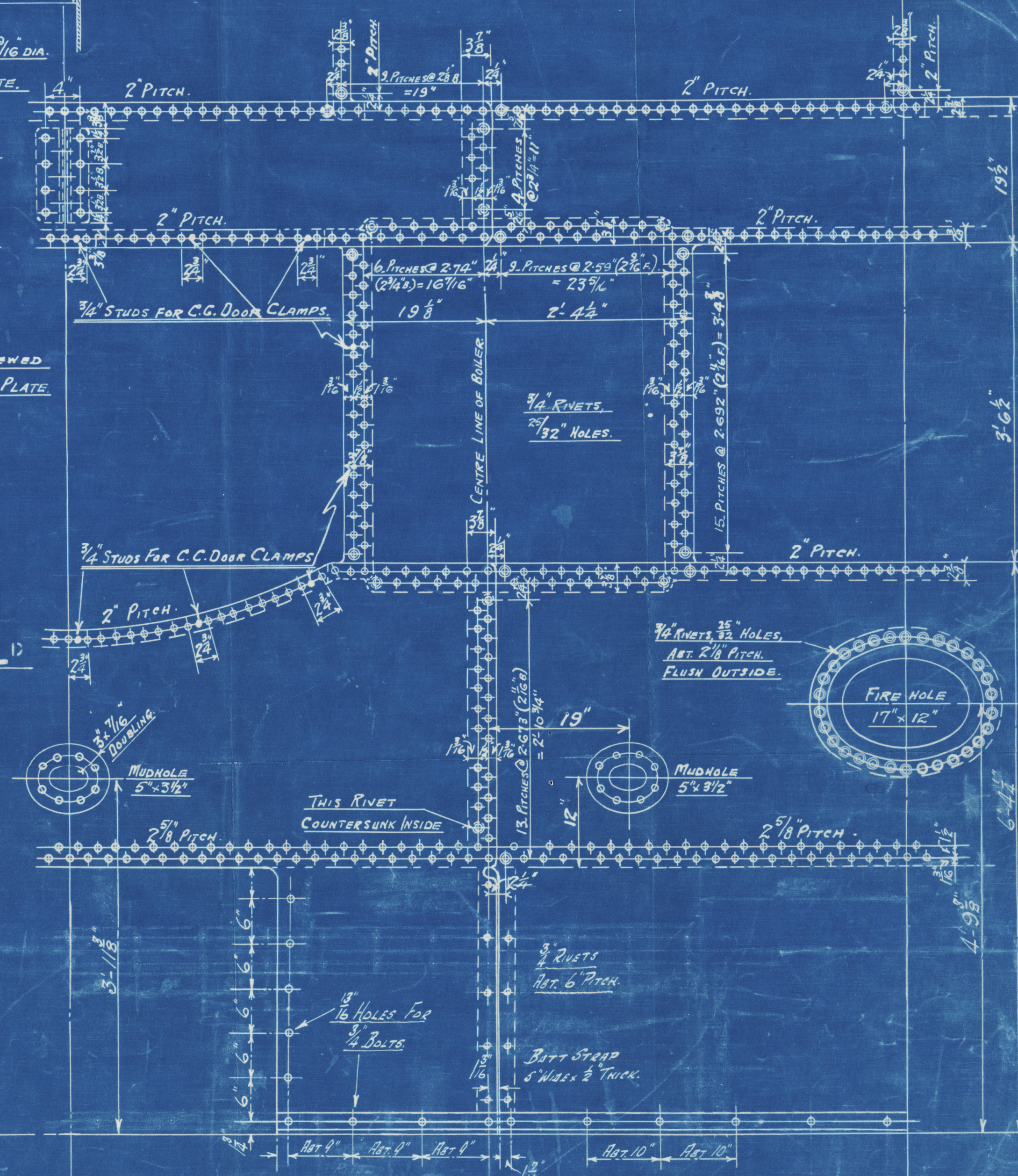
HORIZONTAL FLUE TUBES



COCHRAN & CO ANNAN LTD
ENGINEERS & BOILERMAKERS
ANNAN SCOTLAND

HEATING SURFACE.	
TUBES	273 SQ. FT.
PLATE	77 SQ. FT.
TOTAL	350 SQ. FT.
GRATE AREA	18.7 SQ. FT.

16" x 12" MANHOLE DOOR & STAYBOLTS.
3/4" DIA. RIVETS 25" DIA. HOLES.
(For Correct Bolting See Page)



STANDARD
SURVEY-LLOYDS & TRADE.

LLOYDS & BOYD'S TABLE	
PLATE	(2.573 - 78125) x 100 = 70.8 %
RIVETS	100 (28 x 42 x 37 x 21) = 65.5 %
FRONT TUBE PLATE	(2 - 2.625) x 100 = 34.4 %
BACK TUBE PLATE	(4 - 2.5) x 100 = 37.5 %
SHELL	(14 - 2) x 28 x 65.5 = 105.5 LBS.
FRONT TUBE PLATE	(25 - 2) x 26 x (4 - 2.625) x 100 = 104.7 LBS.
BACK TUBE PLATE	(21 - 2) x 26 x (4 - 2.5) x 100 = 111.5 LBS.
FURNACE	270 (15 - 1) = 137.5 LBS.
GRATE RING	140 (26 - 1) = 101.2 LBS.

10907	5/16"
10908	5/16"
10909	5/16"
10910	5/16"
10911	5/16"
10912	5/16"

PATENT BOILER No 10912
6'-0" x 14'-6" x 350 F.H.S. x 100 LBS.
SCALE: 1 INCH = 1 FOOT.

SIEMENS MARTIN MILD STEEL PLATES.
TENSILE TESTS.
PLATES NOT EXPOSED TO FLAME OR FLANGED.....28 TO 32 TONS.
PLATES EXPOSED TO FLAME OR FLANGED & RIVETS...26 TO 30 TONS.

DRAWING No 16347

Similar to Dwg No 1272 approved 20.5.22
for Boiler No 8862, but with provision of manhole altered.
Manhole fitted with 12" dia. door & 1" dia. staybolt
for 12" firing.

COCHRAN & CO., ANNAN, LD.

Estimate No. 10912

Drawing No. 16347

w. P. 100 lbs.

St. Rangitane

GLASGOW REPORT No. ⁹46221

RETAIN



© 2019

W1137 - 0144

Lloyd's Register
Foundation