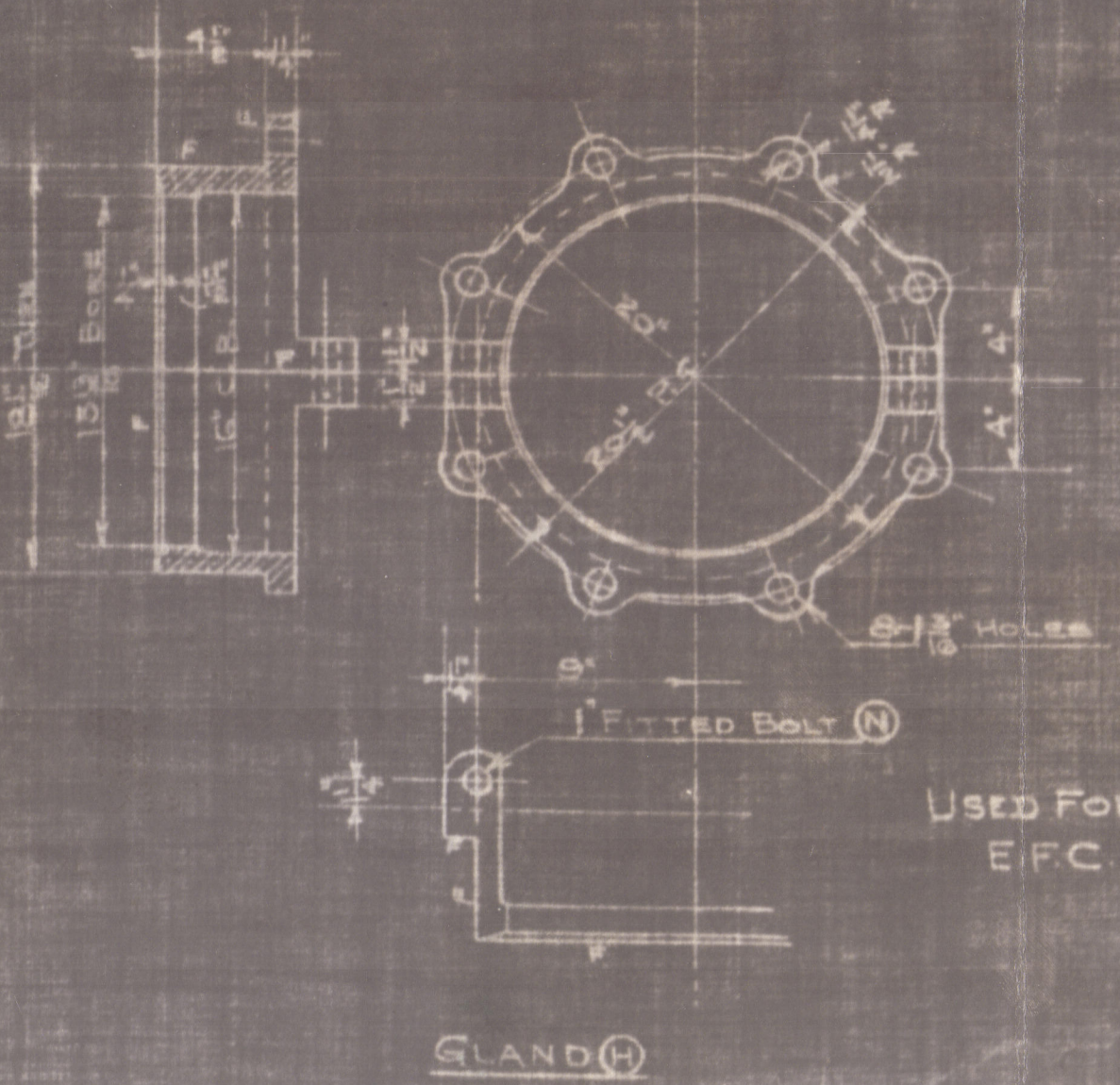
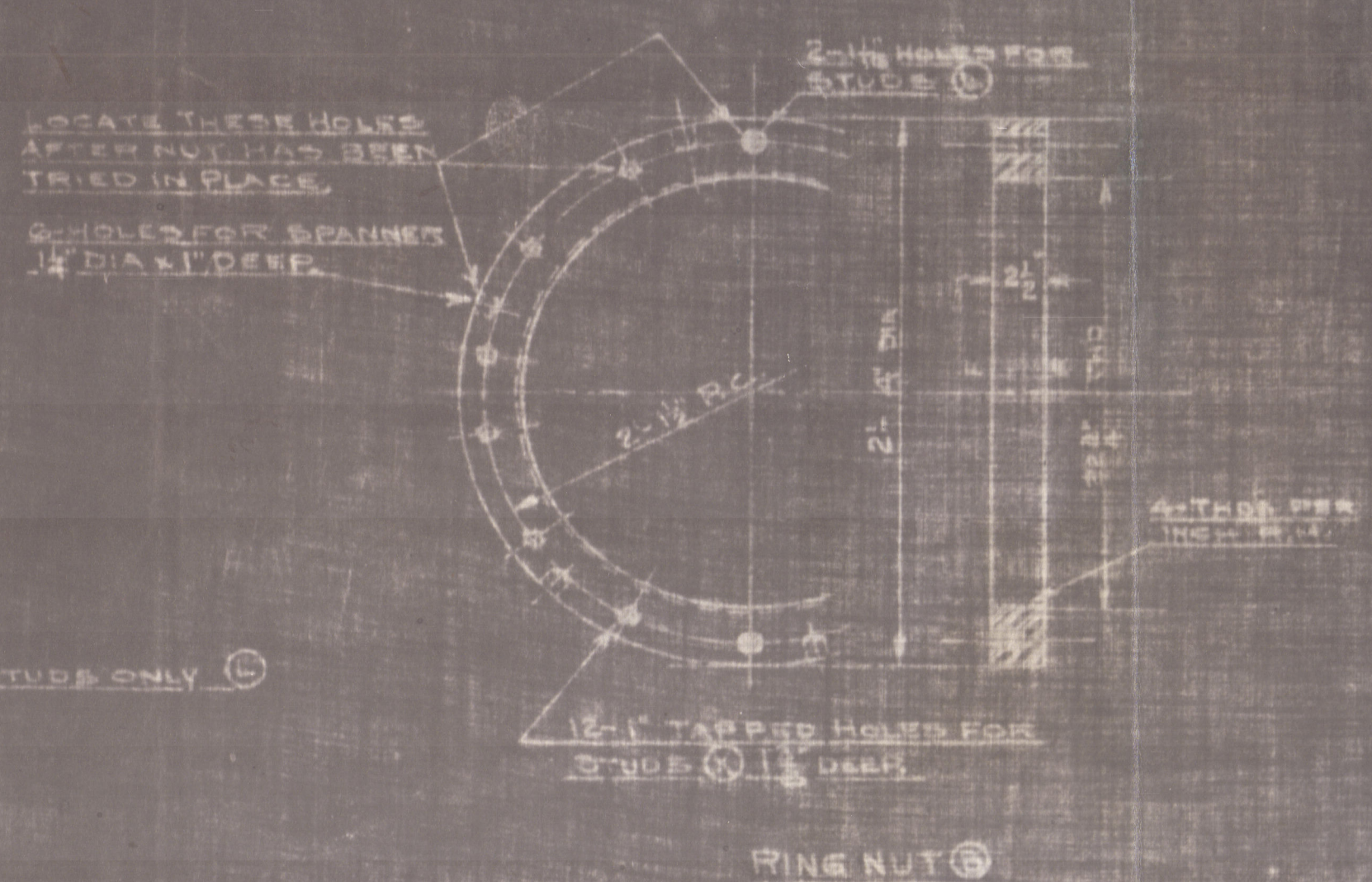
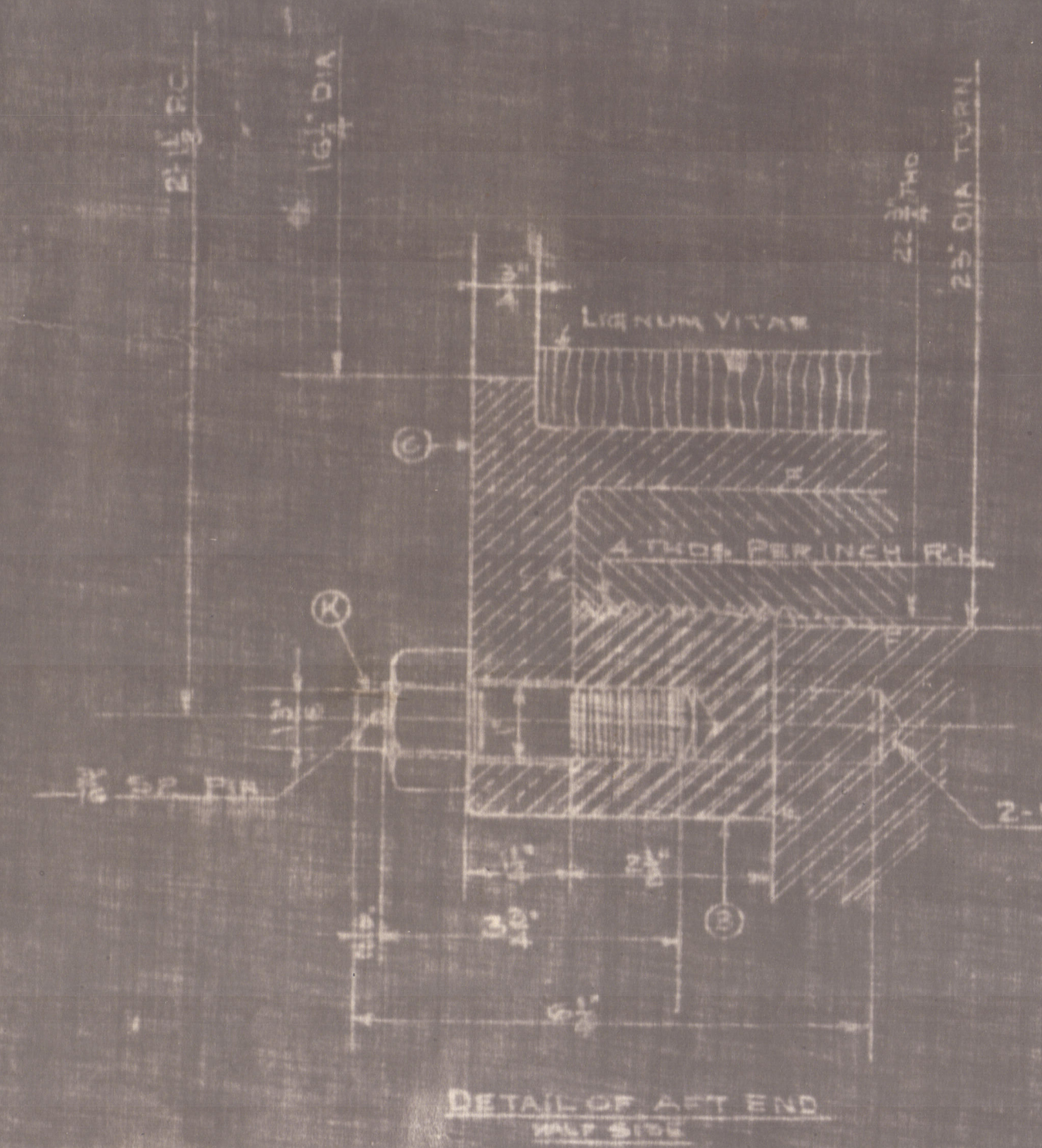
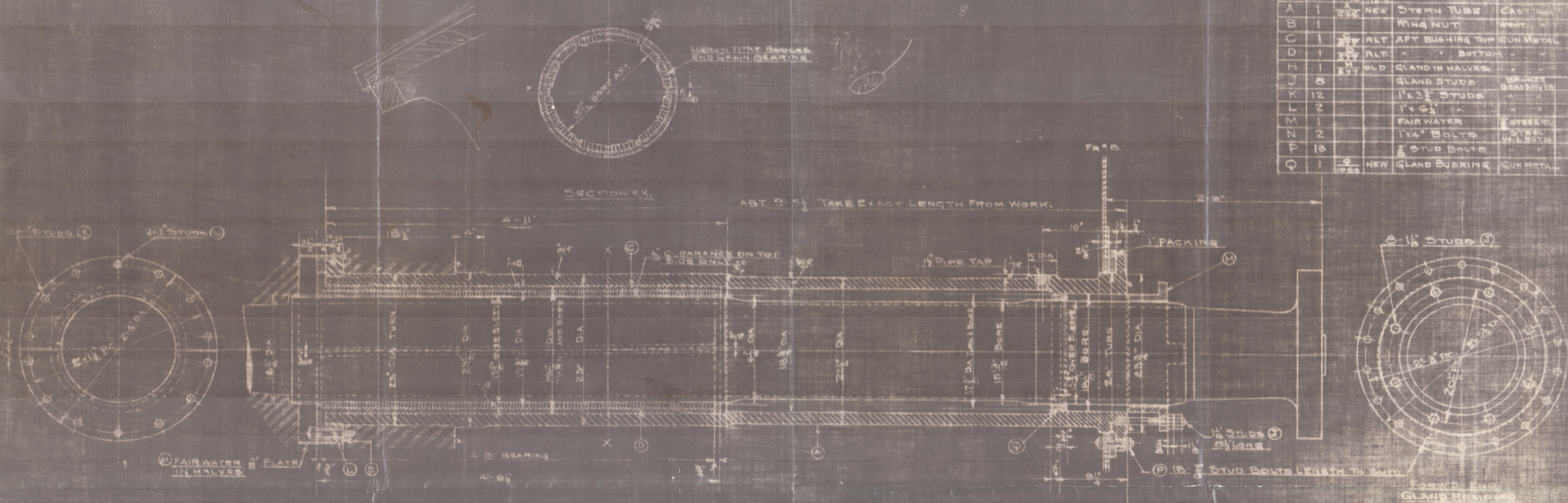


# LIST OF PARTS FOR ONE SHIP

| MARK | NO | PATTERN | DESCRIPTION     | MATERIAL  | WT |
|------|----|---------|-----------------|-----------|----|
| A    | 1  | NEW     | STERN TUBE      | CALSTEEL  |    |
| B    | 1  |         | RING NUT        | WROST     |    |
| C    | 1  | ALT     | AFT BUSHING TOP | CUN METAL |    |
| D    | 1  | ALT     | " " " " BOTTOM  | "         |    |
| H    | 1  | OLD     | GLAND IN HALVES | "         |    |
| J    | 8  |         | GLAND STUDS     | BRONZE    |    |
| K    | 12 |         | 1" x 3" STUDS   | "         |    |
| L    | 2  |         | 1" x 6" "       | "         |    |
| M    | 1  |         | FAIR WATER      | STEEL     |    |
| N    | 2  |         | 1" x 14" BOLTS  | STEEL     |    |
| P    | 18 |         | 1" STUD BOLTS   | "         |    |
| Q    | 1  | NEW     | GLAND BUSHING   | CUN METAL |    |



T.O. 140 CONT. 175  
HULLS 1175-1188 INC.  
ORG. NO. E-90081

USED FOR GOVT CONTRACT SC-175  
E.F.C. HULL NOS 1175-1188 INCL.

SKINNER AND EDDY CO. CHAS. EDDY  
SEATTLE, WASH.

33-3409  
VESSELS NO. 20-21-22-23-24  
STERN TUBE BEARING

SCALE: 1/2\"/>

AGP

*Noted*  
*sd.*  
*3-4-41*

Lloyd's Register  
Foundation



Stern Tube  
with Stern Bearing

---

S.S. Empire Chectah  
(ex S.S. KALANI)

Baltimore Rpt 7189

---



© 2020

Lloyd's Register  
Foundation