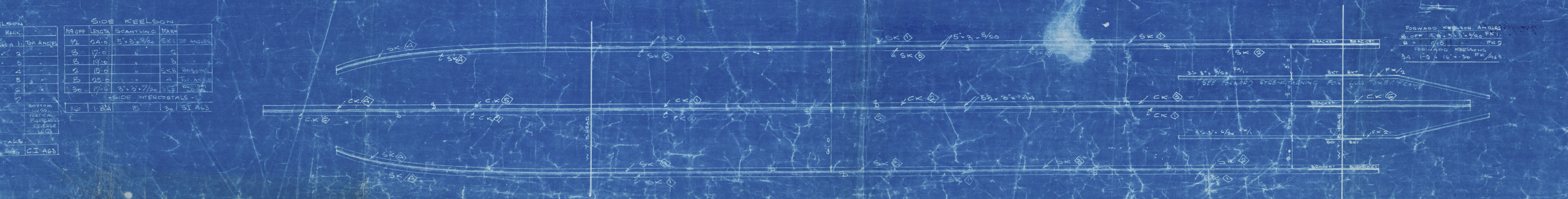
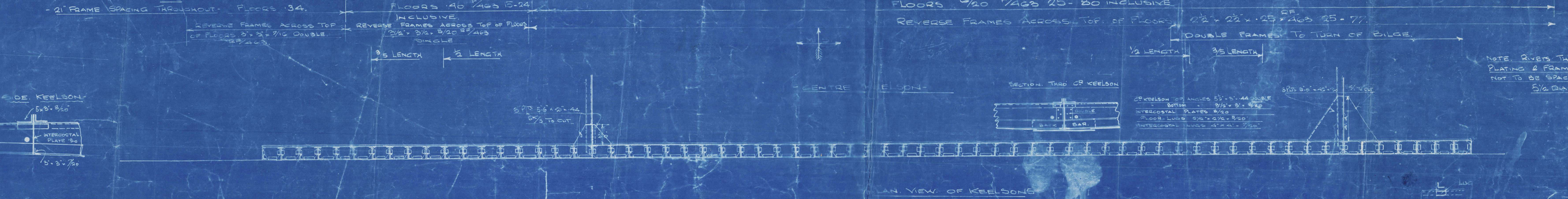
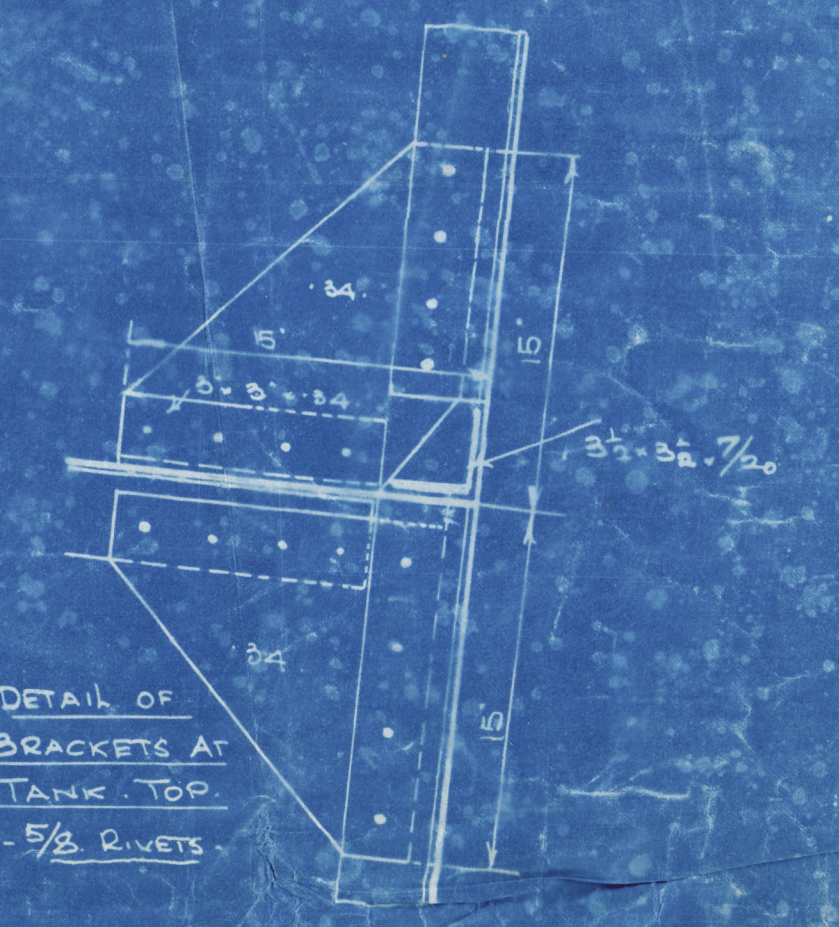
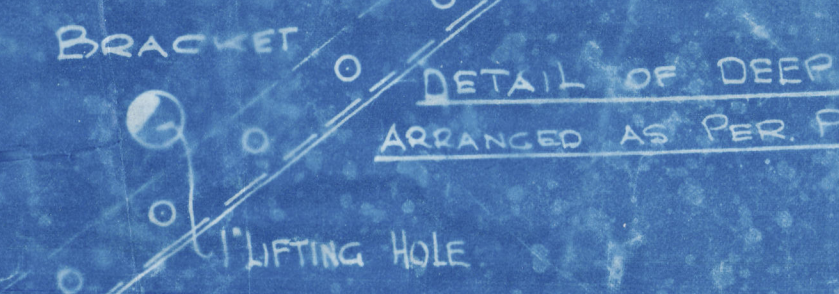


YARD. NOS. 463-4.

FRAMING & KEELSONS.

SCALE 1/4" = 1 FOOT



CENTRE KEELSON			
ENTH.	SCANTLING	MARK.	
7/6	5 1/2 x 3 1/2	1/2	1. TOP ANGLES
8/0	5 1/2 x 3 1/2	2	
9/0	5 1/2 x 3 1/2	3	
10/0	5 1/2 x 3 1/2	4	
11/0	5 1/2 x 3 1/2	5	
12/0	5 1/2 x 3 1/2	6	
13/0	5 1/2 x 3 1/2	7	
14/0	5 1/2 x 3 1/2	8	
15/0	5 1/2 x 3 1/2	9	
16/0	5 1/2 x 3 1/2	10	
17/0	5 1/2 x 3 1/2	11	
18/0	5 1/2 x 3 1/2	12	
19/0	5 1/2 x 3 1/2	13	
20/0	5 1/2 x 3 1/2	14	
21/0	5 1/2 x 3 1/2	15	
22/0	5 1/2 x 3 1/2	16	
23/0	5 1/2 x 3 1/2	17	
24/0	5 1/2 x 3 1/2	18	
25/0	5 1/2 x 3 1/2	19	
26/0	5 1/2 x 3 1/2	20	
27/0	5 1/2 x 3 1/2	21	
28/0	5 1/2 x 3 1/2	22	
29/0	5 1/2 x 3 1/2	23	
30/0	5 1/2 x 3 1/2	24	
31/0	5 1/2 x 3 1/2	25	
32/0	5 1/2 x 3 1/2	26	
33/0	5 1/2 x 3 1/2	27	
34/0	5 1/2 x 3 1/2	28	
35/0	5 1/2 x 3 1/2	29	
36/0	5 1/2 x 3 1/2	30	
37/0	5 1/2 x 3 1/2	31	
38/0	5 1/2 x 3 1/2	32	
39/0	5 1/2 x 3 1/2	33	
40/0	5 1/2 x 3 1/2	34	
41/0	5 1/2 x 3 1/2	35	
42/0	5 1/2 x 3 1/2	36	
43/0	5 1/2 x 3 1/2	37	
44/0	5 1/2 x 3 1/2	38	
45/0	5 1/2 x 3 1/2	39	
46/0	5 1/2 x 3 1/2	40	
47/0	5 1/2 x 3 1/2	41	
48/0	5 1/2 x 3 1/2	42	
49/0	5 1/2 x 3 1/2	43	
50/0	5 1/2 x 3 1/2	44	
51/0	5 1/2 x 3 1/2	45	
52/0	5 1/2 x 3 1/2	46	
53/0	5 1/2 x 3 1/2	47	
54/0	5 1/2 x 3 1/2	48	
55/0	5 1/2 x 3 1/2	49	
56/0	5 1/2 x 3 1/2	50	
57/0	5 1/2 x 3 1/2	51	
58/0	5 1/2 x 3 1/2	52	
59/0	5 1/2 x 3 1/2	53	
60/0	5 1/2 x 3 1/2	54	
61/0	5 1/2 x 3 1/2	55	
62/0	5 1/2 x 3 1/2	56	
63/0	5 1/2 x 3 1/2	57	
64/0	5 1/2 x 3 1/2	58	
65/0	5 1/2 x 3 1/2	59	
66/0	5 1/2 x 3 1/2	60	
67/0	5 1/2 x 3 1/2	61	
68/0	5 1/2 x 3 1/2	62	
69/0	5 1/2 x 3 1/2	63	
70/0	5 1/2 x 3 1/2	64	
71/0	5 1/2 x 3 1/2	65	
72/0	5 1/2 x 3 1/2	66	
73/0	5 1/2 x 3 1/2	67	
74/0	5 1/2 x 3 1/2	68	
75/0	5 1/2 x 3 1/2	69	
76/0	5 1/2 x 3 1/2	70	
77/0	5 1/2 x 3 1/2	71	
78/0	5 1/2 x 3 1/2	72	
79/0	5 1/2 x 3 1/2	73	
80/0	5 1/2 x 3 1/2	74	
81/0	5 1/2 x 3 1/2	75	
82/0	5 1/2 x 3 1/2	76	
83/0	5 1/2 x 3 1/2	77	
84/0	5 1/2 x 3 1/2	78	
85/0	5 1/2 x 3 1/2	79	
86/0	5 1/2 x 3 1/2	80	
87/0	5 1/2 x 3 1/2	81	
88/0	5 1/2 x 3 1/2	82	
89/0	5 1/2 x 3 1/2	83	
90/0	5 1/2 x 3 1/2	84	
91/0	5 1/2 x 3 1/2	85	
92/0	5 1/2 x 3 1/2	86	
93/0	5 1/2 x 3 1/2	87	
94/0	5 1/2 x 3 1/2	88	
95/0	5 1/2 x 3 1/2	89	
96/0	5 1/2 x 3 1/2	90	
97/0	5 1/2 x 3 1/2	91	
98/0	5 1/2 x 3 1/2	92	
99/0	5 1/2 x 3 1/2	93	
100/0	5 1/2 x 3 1/2	94	
101/0	5 1/2 x 3 1/2	95	
102/0	5 1/2 x 3 1/2	96	
103/0	5 1/2 x 3 1/2	97	
104/0	5 1/2 x 3 1/2	98	
105/0	5 1/2 x 3 1/2	99	
106/0	5 1/2 x 3 1/2	100	

FORWARD KEELSON ANGLES
2 OFF 15\"/>

Drawing 104
Yard No. 463-4
Date 1-10-20
Drawn by G.W.
Traced by
Checked by G.W.

Frames & Keelsons
Abdila Intels
463

FRAMES & KEELSONS

YARD NO 464

M/M. 1132

S. S.

Brighton

LIVERPOOL

Report No.

97588

*Howey
Rose*



+ Cornish Merchant

Liv. 86169.



© 2021

Lloyd's Register
Foundation

W1132-0088