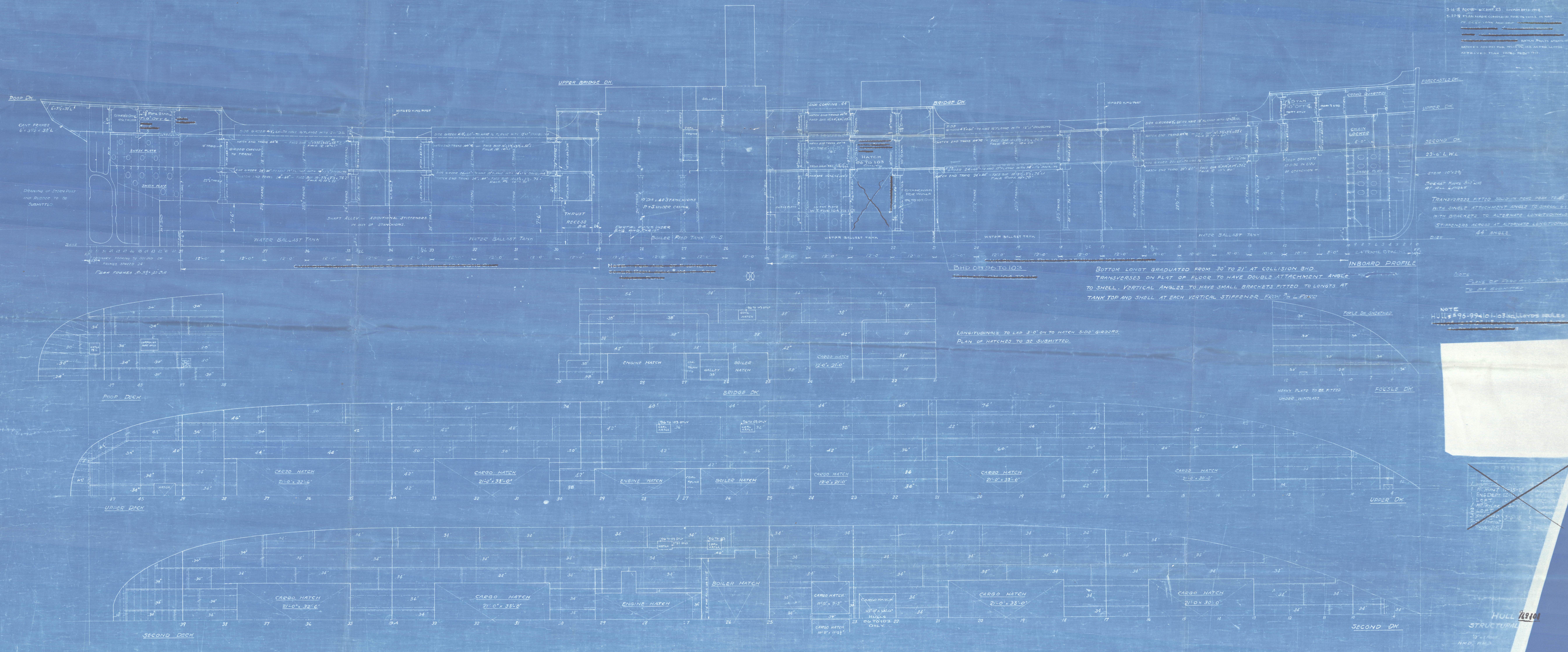


3.14.18 Approved by the U.S. Navy, Bureau of Naval Construction, on May 15, 1918. This plan shows the arrangement of the hull structure, including the upper and lower decks, the bridge, the engine room, the boiler room, the cargo hold, the fore and aft castles, and the various hatches and openings. The plan is drawn to scale, and the dimensions are given in feet and inches. The plan is approved by the U.S. Navy, Bureau of Naval Construction, and is to be used as a guide in the construction of the hull.



NOTE: HULL # 96-99410-103, LLOYD'S RULES.

PRINTED BY THE U.S. NAVY, BUREAU OF NAVAL CONSTRUCTION, WASHINGTON, D.C.

HULL # 96-99410-103, LLOYD'S RULES.

Empire Mallard.

Lodd Dry Dock & Const Corp.

Vessel No 101 $\frac{25}{25}$ Anacortes

Profile & Deck Plans

Sea. 675.