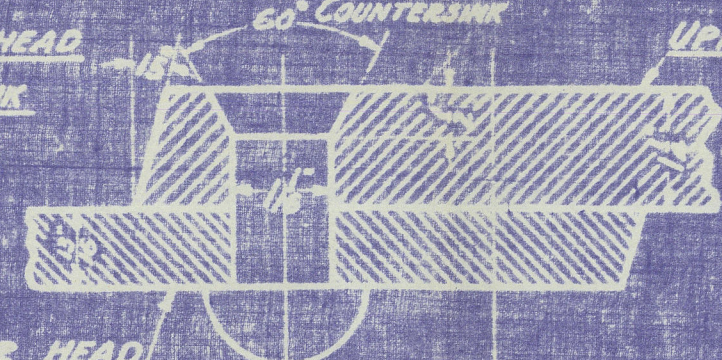
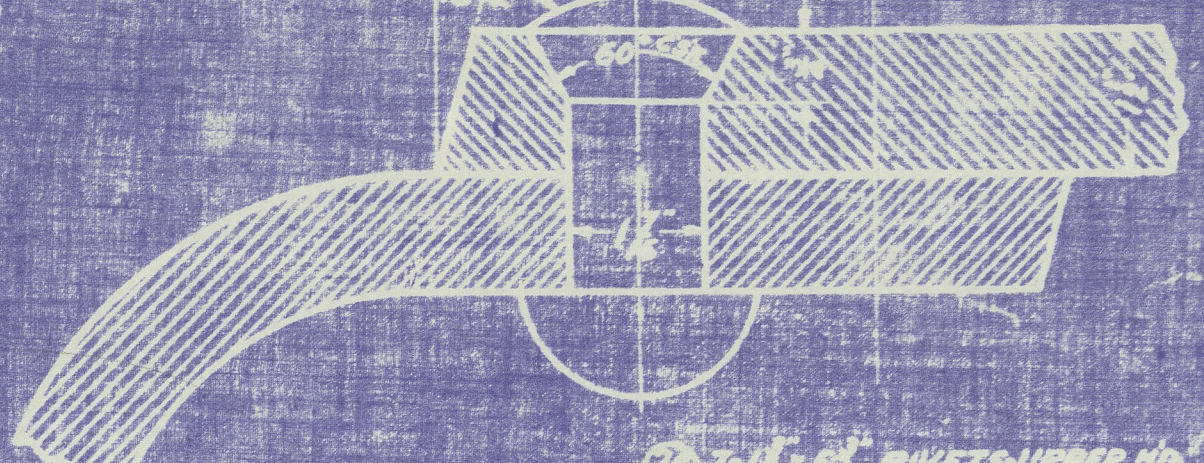


SEAM IN FORWARD HEAD
RIVETS COUNTERSUNK
ON OUTSIDE



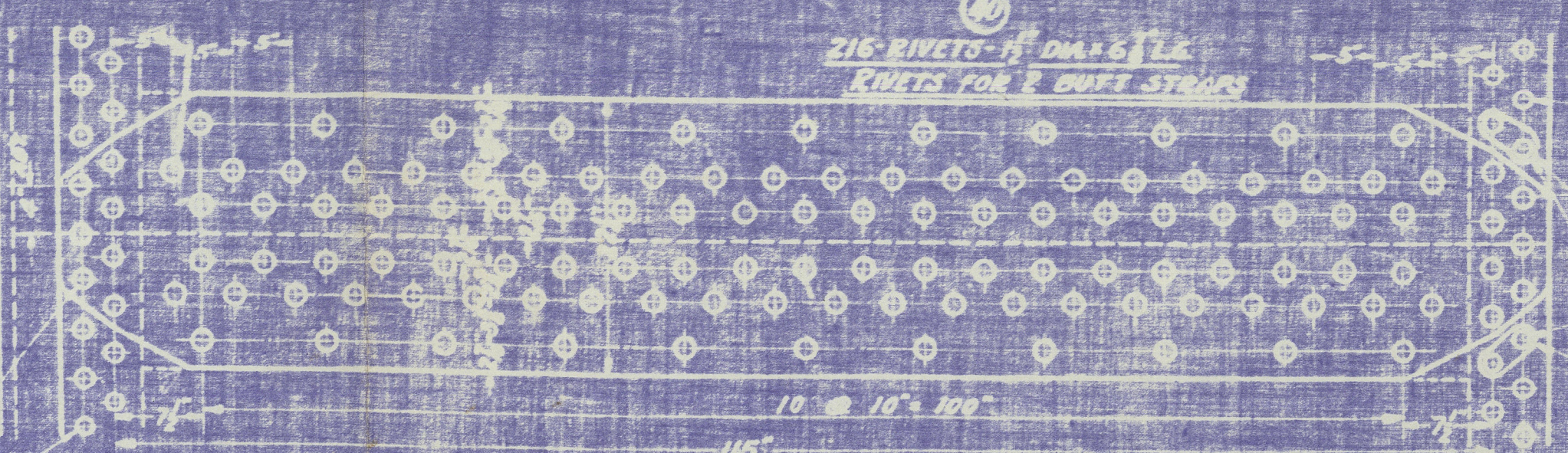
ROUNDABOUT RIVETS IN FORWARD ONLY



NOTE: FOR 3-COURSE BOILERS-3 SETS OF BUTT STRAPS REQD. AND FOLLOWING SHELL PLATES:
1-PLATE - 11' x 125' x 237' 1/2
1- - 11' x 125' x 197' 1/2
1- - 11' x 125' x 129' 1/2

T-140-E176083
CONT'N-11-HULL#2073-3
McAULIFFE LETTER
Aug 17-1919

- 21 7-11/8" RIVETS-UPPER HD
- 22 7-11/8" RIVETS-LOWER HD
- 23 11-11/8" RIVETS-UPPER HD
- 24 11-11/8" RIVETS-LOWER HD
- 25 11-11/8" RIVETS-LAP OF PLATES



DETAIL OF BUTT STRAPS 11" DIA. RIVETS

INSIDE STRAP 1/2" THICK OUTSIDE STRAP 1" THICK
PLATE - 11" THICK - 100' x 144' RIVETS - 5" DIA. x 1 1/2" x 100' x 144'

- 1-11' x 125' RIVETS-UPPER HD
- 1-11' x 125' RIVETS-LOWER HD
- 1-11' x 125' RIVETS-UPPER HD
- 1-11' x 125' RIVETS-LOWER HD
- 1-11' x 125' RIVETS-UPPER HD
- 1-11' x 125' RIVETS-LOWER HD

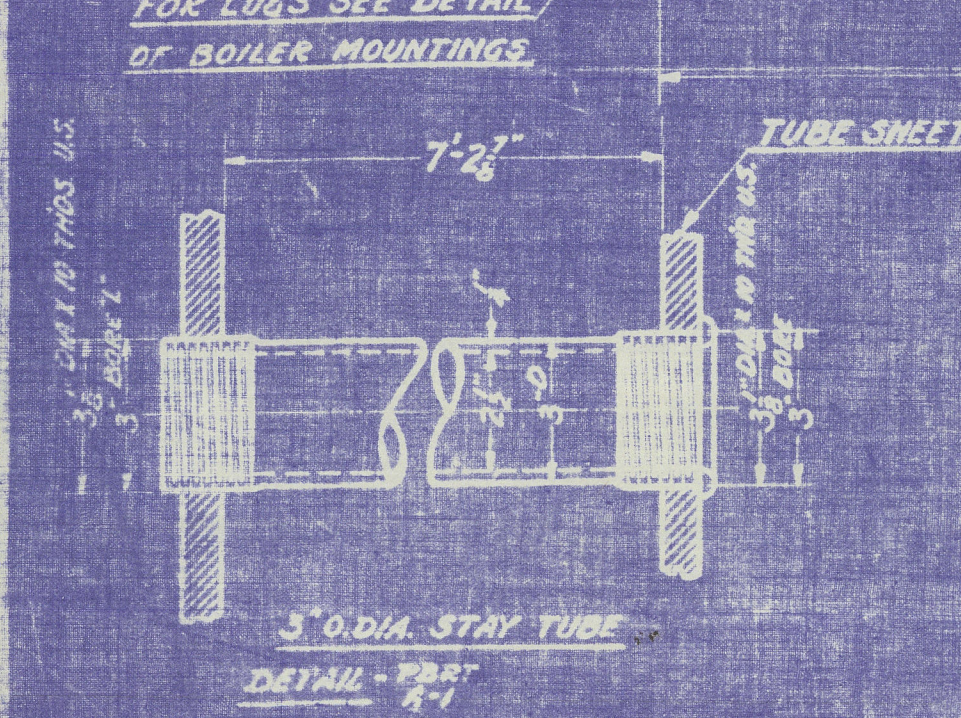
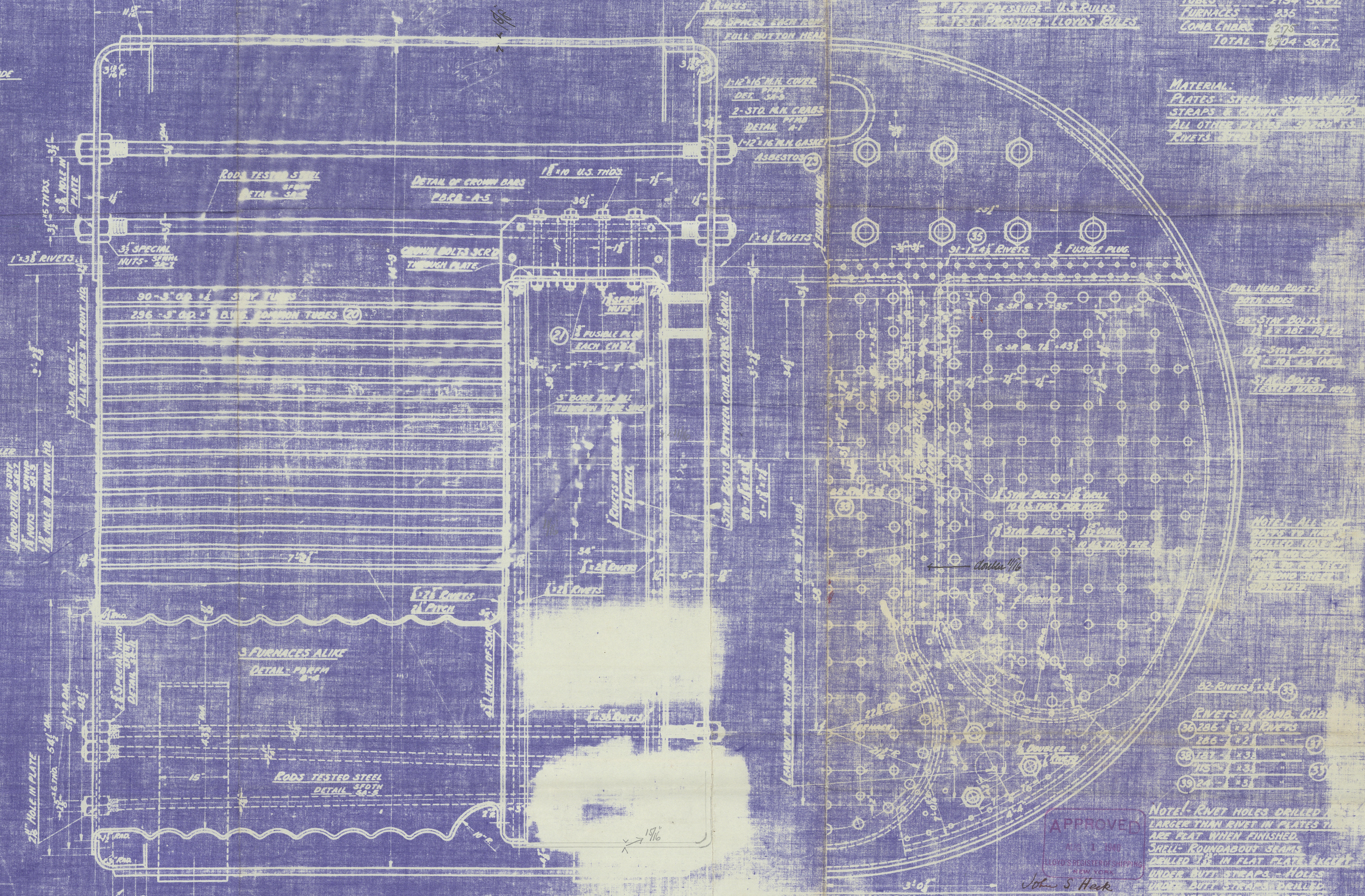
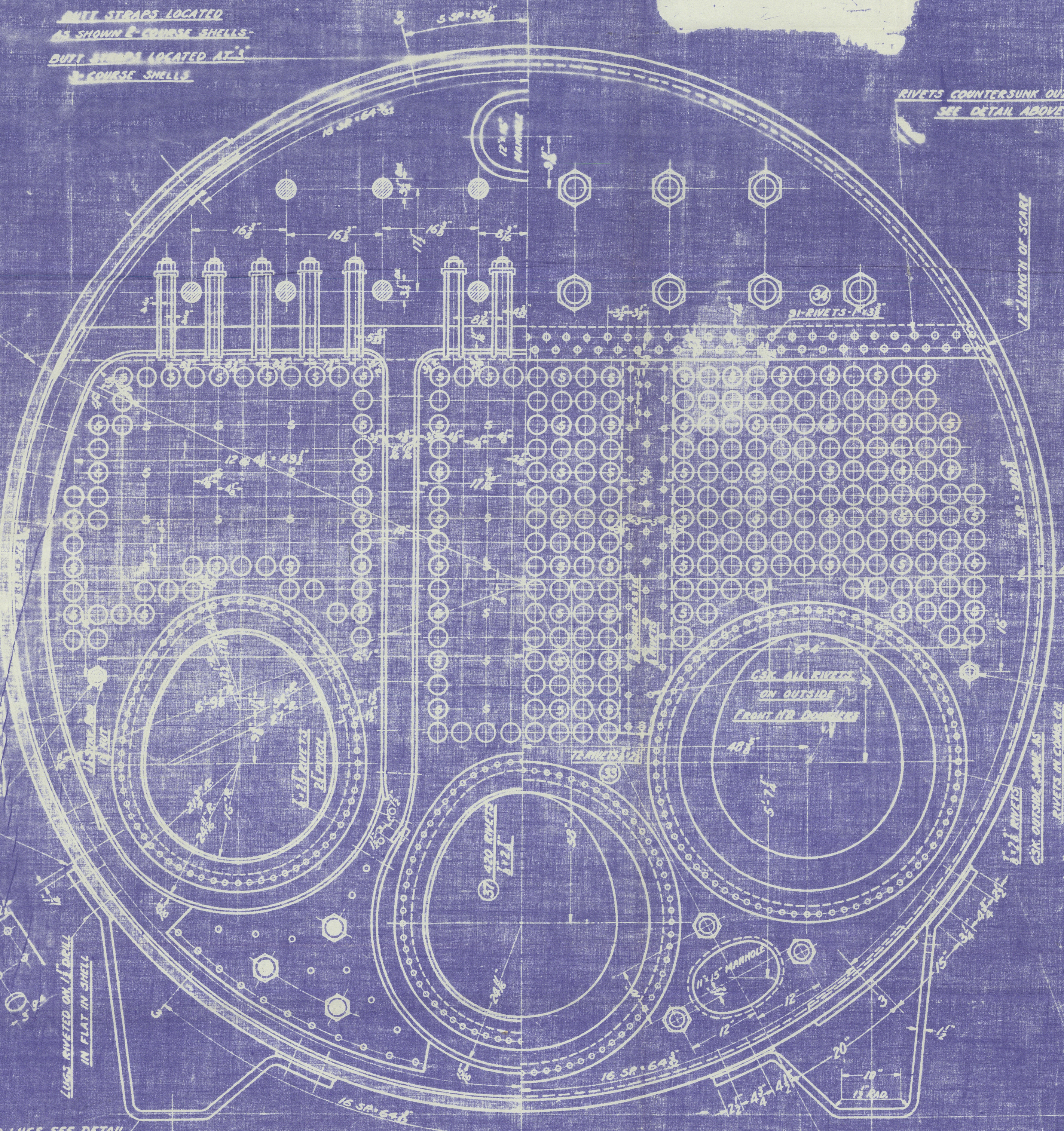
U.S. RULES			LLOYD'S RULES		
ITEM	DESCRIPTION	W.P.	ITEM	DESCRIPTION	W.P.
1	STEEL SHELL	212	1	STEEL SHELL	230
2	STEEL SHELL	212	2	STEEL SHELL	230
3	STEEL SHELL	212	3	STEEL SHELL	230
4	STEEL SHELL	212	4	STEEL SHELL	230
5	STEEL SHELL	212	5	STEEL SHELL	230
6	STEEL SHELL	212	6	STEEL SHELL	230
7	STEEL SHELL	212	7	STEEL SHELL	230
8	STEEL SHELL	212	8	STEEL SHELL	230
9	STEEL SHELL	212	9	STEEL SHELL	230
10	STEEL SHELL	212	10	STEEL SHELL	230
11	STEEL SHELL	212	11	STEEL SHELL	230
12	STEEL SHELL	212	12	STEEL SHELL	230
13	STEEL SHELL	212	13	STEEL SHELL	230
14	STEEL SHELL	212	14	STEEL SHELL	230
15	STEEL SHELL	212	15	STEEL SHELL	230
16	STEEL SHELL	212	16	STEEL SHELL	230
17	STEEL SHELL	212	17	STEEL SHELL	230
18	STEEL SHELL	212	18	STEEL SHELL	230
19	STEEL SHELL	212	19	STEEL SHELL	230
20	STEEL SHELL	212	20	STEEL SHELL	230
21	STEEL SHELL	212	21	STEEL SHELL	230
22	STEEL SHELL	212	22	STEEL SHELL	230
23	STEEL SHELL	212	23	STEEL SHELL	230
24	STEEL SHELL	212	24	STEEL SHELL	230
25	STEEL SHELL	212	25	STEEL SHELL	230
26	STEEL SHELL	212	26	STEEL SHELL	230
27	STEEL SHELL	212	27	STEEL SHELL	230
28	STEEL SHELL	212	28	STEEL SHELL	230
29	STEEL SHELL	212	29	STEEL SHELL	230
30	STEEL SHELL	212	30	STEEL SHELL	230
31	STEEL SHELL	212	31	STEEL SHELL	230
32	STEEL SHELL	212	32	STEEL SHELL	230
33	STEEL SHELL	212	33	STEEL SHELL	230
34	STEEL SHELL	212	34	STEEL SHELL	230
35	STEEL SHELL	212	35	STEEL SHELL	230
36	STEEL SHELL	212	36	STEEL SHELL	230
37	STEEL SHELL	212	37	STEEL SHELL	230
38	STEEL SHELL	212	38	STEEL SHELL	230
39	STEEL SHELL	212	39	STEEL SHELL	230
40	STEEL SHELL	212	40	STEEL SHELL	230
41	STEEL SHELL	212	41	STEEL SHELL	230
42	STEEL SHELL	212	42	STEEL SHELL	230
43	STEEL SHELL	212	43	STEEL SHELL	230
44	STEEL SHELL	212	44	STEEL SHELL	230
45	STEEL SHELL	212	45	STEEL SHELL	230
46	STEEL SHELL	212	46	STEEL SHELL	230
47	STEEL SHELL	212	47	STEEL SHELL	230
48	STEEL SHELL	212	48	STEEL SHELL	230
49	STEEL SHELL	212	49	STEEL SHELL	230
50	STEEL SHELL	212	50	STEEL SHELL	230
51	STEEL SHELL	212	51	STEEL SHELL	230
52	STEEL SHELL	212	52	STEEL SHELL	230
53	STEEL SHELL	212	53	STEEL SHELL	230
54	STEEL SHELL	212	54	STEEL SHELL	230
55	STEEL SHELL	212	55	STEEL SHELL	230
56	STEEL SHELL	212	56	STEEL SHELL	230
57	STEEL SHELL	212	57	STEEL SHELL	230
58	STEEL SHELL	212	58	STEEL SHELL	230
59	STEEL SHELL	212	59	STEEL SHELL	230
60	STEEL SHELL	212	60	STEEL SHELL	230
61	STEEL SHELL	212	61	STEEL SHELL	230
62	STEEL SHELL	212	62	STEEL SHELL	230
63	STEEL SHELL	212	63	STEEL SHELL	230
64	STEEL SHELL	212	64	STEEL SHELL	230
65	STEEL SHELL	212	65	STEEL SHELL	230
66	STEEL SHELL	212	66	STEEL SHELL	230
67	STEEL SHELL	212	67	STEEL SHELL	230
68	STEEL SHELL	212	68	STEEL SHELL	230
69	STEEL SHELL	212	69	STEEL SHELL	230
70	STEEL SHELL	212	70	STEEL SHELL	230
71	STEEL SHELL	212	71	STEEL SHELL	230
72	STEEL SHELL	212	72	STEEL SHELL	230
73	STEEL SHELL	212	73	STEEL SHELL	230
74	STEEL SHELL	212	74	STEEL SHELL	230
75	STEEL SHELL	212	75	STEEL SHELL	230
76	STEEL SHELL	212	76	STEEL SHELL	230
77	STEEL SHELL	212	77	STEEL SHELL	230
78	STEEL SHELL	212	78	STEEL SHELL	230
79	STEEL SHELL	212	79	STEEL SHELL	230
80	STEEL SHELL	212	80	STEEL SHELL	230
81	STEEL SHELL	212	81	STEEL SHELL	230
82	STEEL SHELL	212	82	STEEL SHELL	230
83	STEEL SHELL	212	83	STEEL SHELL	230
84	STEEL SHELL	212	84	STEEL SHELL	230
85	STEEL SHELL	212	85	STEEL SHELL	230
86	STEEL SHELL	212	86	STEEL SHELL	230
87	STEEL SHELL	212	87	STEEL SHELL	230
88	STEEL SHELL	212	88	STEEL SHELL	230
89	STEEL SHELL	212	89	STEEL SHELL	230
90	STEEL SHELL	212	90	STEEL SHELL	230
91	STEEL SHELL	212	91	STEEL SHELL	230
92	STEEL SHELL	212	92	STEEL SHELL	230
93	STEEL SHELL	212	93	STEEL SHELL	230
94	STEEL SHELL	212	94	STEEL SHELL	230
95	STEEL SHELL	212	95	STEEL SHELL	230
96	STEEL SHELL	212	96	STEEL SHELL	230
97	STEEL SHELL	212	97	STEEL SHELL	230
98	STEEL SHELL	212	98	STEEL SHELL	230
99	STEEL SHELL	212	99	STEEL SHELL	230
100	STEEL SHELL	212	100	STEEL SHELL	230

210-UP
INSPECTION
AND LOADS
TEST PRESSURE - U.S. RULES
TEST PRESSURE - LLOYD'S RULES

HEATING SURFACE
TUBES - 2194 SQ. FT.
FURNACES - 350
COMB. CHARGE - 275
TOTAL - 2819 SQ. FT.

MATERIAL:
PLATES - STEEL
STRAPS - STEEL
RIVETS - STEEL
ALL OTHERS - STEEL

NOTE: ALL HOLES FOR
STAY BOLTS TO BE DRILLED
IN PLATE & TRIMMED IN PLACE



Boiler built by American Bureau of Shipping, No. 10065, 10066, 10067
Plan B. Cells April 14, 1919, 35121
Aug. 8, 22, 1920, 35121
180-B, 26, 1920, 35121
Titled by D. M. Mearns

BLUE PRINTS ISSUED TO		
NO.	DATE	DESCRIPTION
1	1919	11-15' RIVETS
2	1919	11-15' RIVETS
3	1919	11-15' RIVETS
4	1919	11-15' RIVETS
5	1919	11-15' RIVETS
6	1919	11-15' RIVETS
7	1919	11-15' RIVETS
8	1919	11-15' RIVETS
9	1919	11-15' RIVETS
10	1919	11-15' RIVETS
11	1919	11-15' RIVETS
12	1919	11-15' RIVETS
13	1919	11-15' RIVETS
14	1919	11-15' RIVETS
15	1919	11-15' RIVETS
16	1919	11-15' RIVETS
17	1919	11-15' RIVETS
18	1919	11-15' RIVETS
19	1919	11-15' RIVETS
20	1919	11-15' RIVETS
21	1919	11-15' RIVETS
22	1919	11-15' RIVETS
23	1919	11-15' RIVETS
24	1919	11-15' RIVETS
25	1919	11-15' RIVETS
26	1919	11-15' RIVETS
27	1919	11-15' RIVETS
28	1919	11-15' RIVETS
29	1919	11-15' RIVETS
30	1919	11-15' RIVETS
31	1919	11-15' RIVETS
32	1919	11-15' RIVETS
33	1919	11-15' RIVETS
34	1919	11-15' RIVETS
35	1919	11-15' RIVETS
36	1919	11-15' RIVETS
37	1919	11-15' RIVETS
38	1919	11-15' RIVETS
39	1919	11-15' RIVETS
40	1919	11-15' RIVETS
41	1919	11-15' RIVETS
42	1919	11-15' RIVETS
43	1919	11-15' RIVETS
44	1919	11-15' RIVETS
45	1919	11-15' RIVETS
46	1919	11-15' RIVETS
47	1919	11-15' RIVETS
48	1919	11-15' RIVETS
49	1919	11-15' RIVETS
50	1919	11-15' RIVETS
51	1919	11-15' RIVETS
52	1919	11-15' RIVETS
53	1919	11-15' RIVETS
54	1919	11-15' RIVETS
55	1919	11-15' RIVETS
56	1919	11-15' RIVETS
57	1919	11-15' RIVETS
58	1919	11-15' RIVETS
59	1919	11-15' RIVETS
60	1919	11-15' RIVETS
61	1919	11-15' RIVETS
62	1919	11-15' RIVETS
63	1919	11-15' RIVETS
64	1919	11-15' RIVETS
65	1919	11-15' RIVETS
66	1919	11-15' RIVETS
67	1919	11-15' RIVETS
68	1919	11-15' RIVETS
69	1919	11-15' RIVETS
70	1919	11-15' RIVETS
71	1919	11-15' RIVETS
72	1919	11-15' RIVETS
73	1919	11-15' RIVETS
74	1919	11-15' RIVETS
75	1919	11-15' RIVETS
76	1919	11-15' RIVETS
77	1919	11-15' RIVETS
78	1919	11-15' RIVETS
79	1919	11-15' RIVETS
80	1919	11-15' RIVETS
81	1919	11-15' RIVETS
82	1919	11-15' RIVETS
83	1919	11-15' RIVETS
84	1919	11-15' RIVETS
85	1919	11-15' RIVETS
86	1919	11-15' RIVETS
87	1919	11-15' RIVETS
88	1919	11-15' RIVETS
89	1919	11-15' RIVETS
90	1919	11-15' RIVETS
91	1919	11-15' RIVETS
92	1919	11-15' RIVETS
93	1919	11-15' RIVETS
94	1919	11-15' RIVETS
95	1919	11-15' RIVETS
96	1919	11-15' RIVETS
97	1919	11-15' RIVETS
98	1919	11-15' RIVETS
99	1919	11-15' RIVETS
100	1919	11-15' RIVETS

MADE FROM MICHIGAN IRON & STEEL WKS. PAT. 25

APPROVED

John S. Heck

NOTE: RIVET HOLES DRILLED
LARGER THAN RIVET IN PLATES
AGE PLAT WHEN FINISHED
SHALL ROUNDABOUT SEAMS
DRILLED 1/8" IN PLATE LENGTH
UNDER BUTT STRAPS - HOLES
FULL SIZE FROM BUTT STRAP
IN PLATE

HULL NO. 150-157
CHARGE NO. 63
ENGINEERING DEPARTMENT
McGILL'S SCOTCH MARINE BOILER
LONG BEACH SHIPBUILDING COMPANY
LONG BEACH, CALIFORNIA

W1130-0155

"Empire Island"

Bal. 7159



© 2020

Lloyd's Register
Foundation