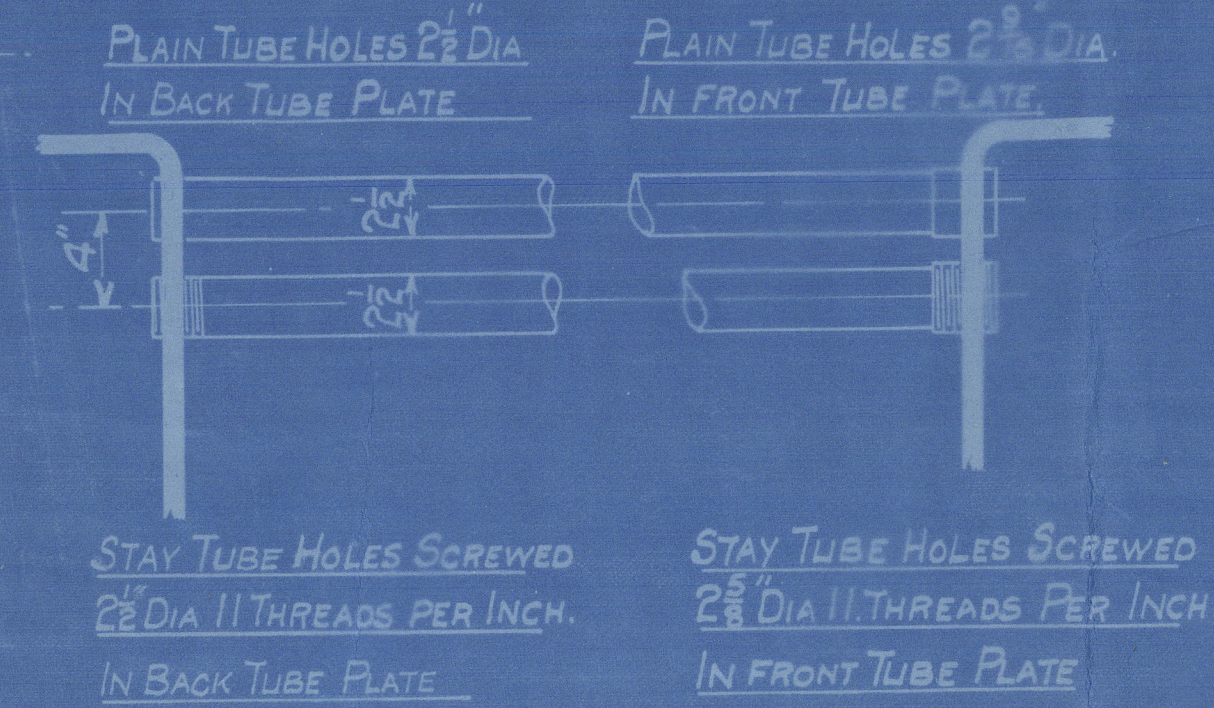
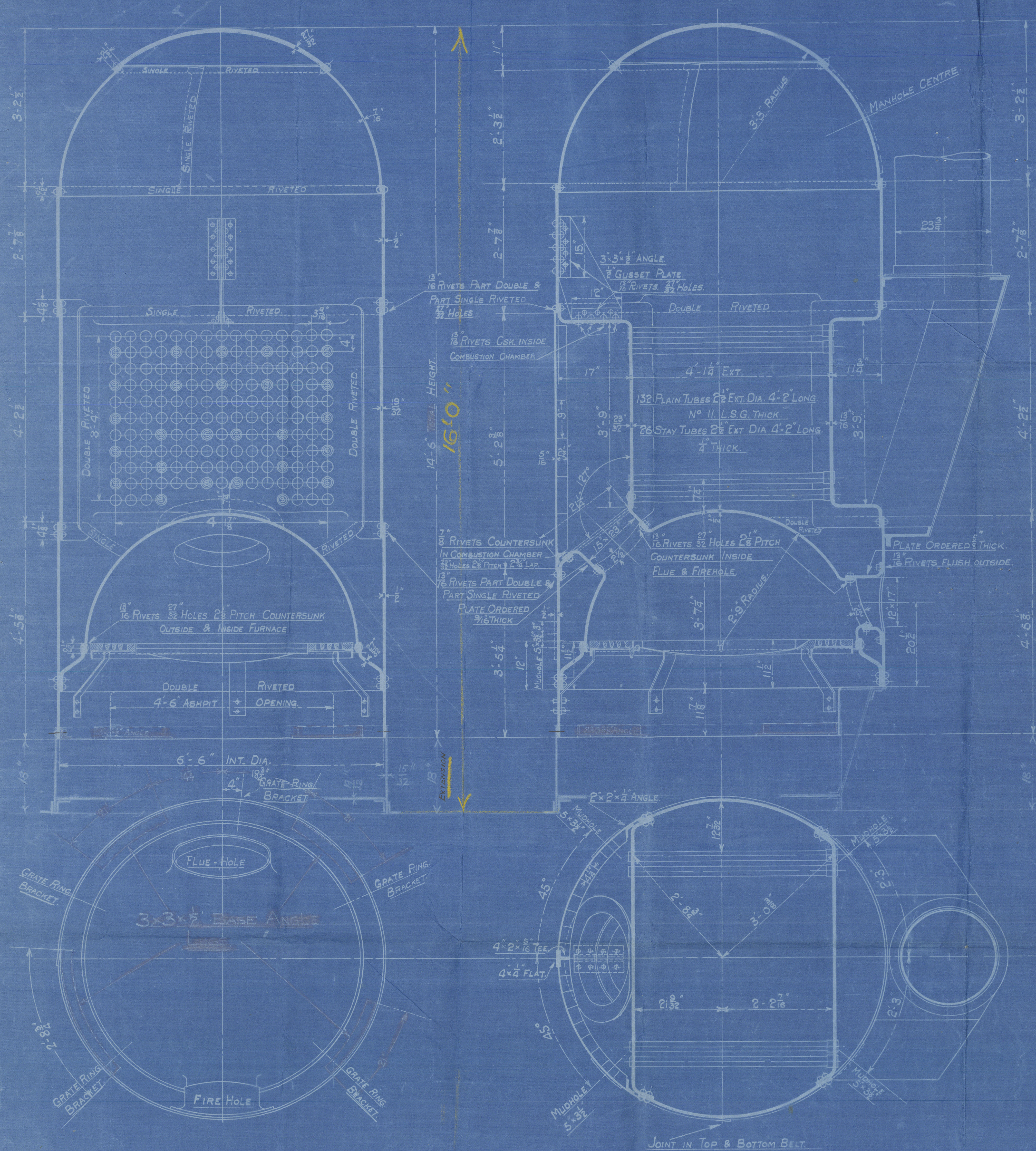


COCHRAN PATENT VERTICAL MULTITUBULAR BOILER

HORIZONTAL FLUE TUBES

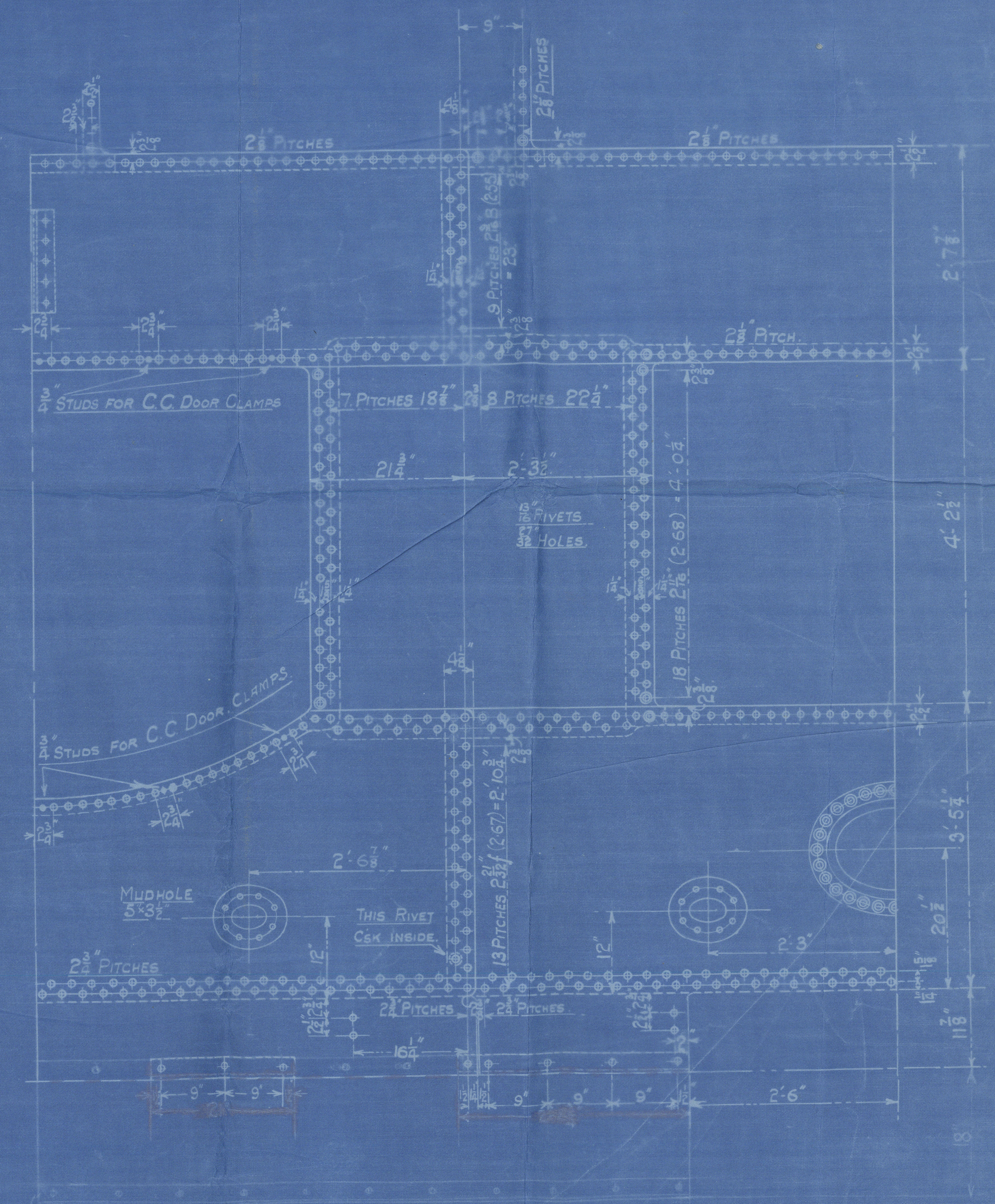


HEATING SURFACE	
TUBES	416 Sq. Ft.
PLATE	84 Sq. Ft.
TOTAL	500 Sq. Ft.
GRATE AREA	22.5 Sq. Ft.

— LLOYDS —	
PLATE	2.55 - 84375 x 100 67%
RIVETS	2.67 x 5 71.1%
FRONT TUBE PLATE	4 - 2.59375 x 100 35.2%
BACK TUBE PLATE	4 - 2.5 x 100 37.5%
SHELL	20.5 x 67 x (8-2) 105 LBS.
FRONT TUBE PLATE	20.5 x 37.5 x (11.5-2) x 26 101.3 LBS.
BACK TUBE PLATE	20.5 x 37.5 x (11.5-2) x 26 103.5 LBS.
FURNACE	1250 x (8-2) 113.6 LBS.

— BOARD OF TRADE —	
PLATE	2.55 - 84375 x 100 67%
RIVETS	2.67 x 5 74.5%
FRONT TUBE PLATE	4 - 2.59375 x 100 35.2%
BACK TUBE PLATE	4 - 2.5 x 100 37.5%
SHELL	28 x 2240 x 67 x 2 x 5 110 LBS.
FRONT TUBE PLATE	26 x 2240 x 35 x 2 x 8/16 140 LBS.
BACK TUBE PLATE	26 x 2240 x 37.5 x 2 x 7/8 164 LBS.
FURNACE	19000 x 5 106 LBS.

— BUREAU VERITAS —	
PLATE	2 x 28 x 2240 x 67 (5-04) 124 LBS.
RIVETS	2 (2 x 559) 24 x 2240 115 LBS.
FRONT TUBE PLATE	10400 x 37.5 x 2 x 8/16 124 LBS.
BACK TUBE PLATE	10400 x 37.5 x 2 x 7/8 117 LBS.
FURNACE	600 x (8-2) 109 LBS.



Note
 Circular Drawing No 9882 appended 27.6-14
 except portion of Shell Crown Seams have been altered
 & extension to support for oil firing added

PATENT BOILER N° 8157
6'-6" x 16'-0" x 500 x 100 LBS.

SCALE 1 INCH TO 1 FOOT.
 SIEMENS MARTIN MILD STEEL PLATES.
 PLATES NOT EXPOSED TO FLAME OR FLANGED 28 TO 32 TONS
 PLATES EXPOSED TO FLAME OR FLANGED EXCEPT FOR CORN. 26 TO 30 TONS
 FURNACE CROWN 26 TO 28 TONS.

COCHRAN & CO ANNAN LTD.
ENGINEERS & BOILERMAKERS
ANNAN, SCOTLAND

STANDARD
SURVEY LLOYDS

DRAWING N° 11943
 Lloyd's Register
 Foundation

COCHRAN & CO., ANNAN, LD.

Roller No. 8157

Drawing No. 14943

100 lbs per sq. inch.

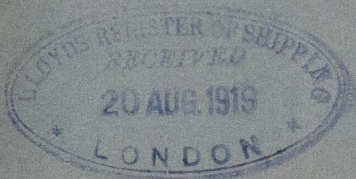
Mark on Ball:-

No 14856
LLOYD'S TEST.
200 lbs
W.P. 100 lbs
P.M.C.G. 15/8/19.

"Primula"

Gen 8026

GLASGOW REPORT No. 39031.



© 2020

Lloyd's Register
Foundation