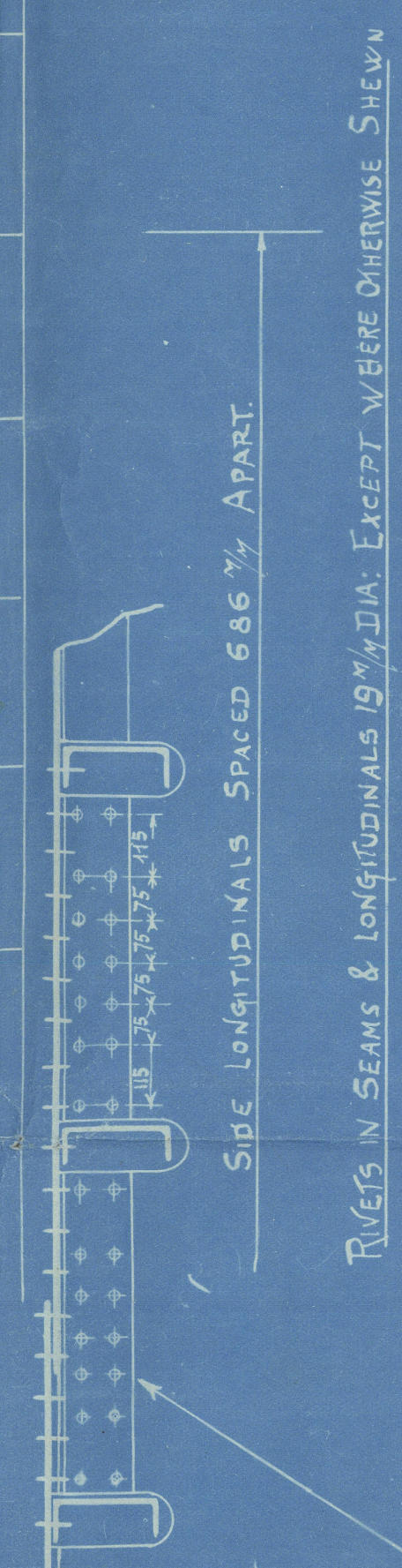


29/11/18
LLOYDS Stamp
2.10.18

LLOYDS NUMERALS
BREADTH M¹⁰ 41.16
DEPTH M¹⁰ 21.92
63.08 TRANSVERSE N°
LENGTH B.P. 279.00
17599.32 LONGITUDINAL N°
1/2 TO UPPER DECK 12.73
1/2 TO RAISED QUARTER DECK 10.56

SHELL LONGITUDINAL RIVETING 19" M RIVETS RIVETS SPACED 6 DIAS. APART.	NUMBER OF RIVETS EACH SIDE OF BUTT	NUMBER OF RIVETS IN STRAKES CONNECTING SIDE LONGS TO WT BARS	8	9
			8	9
			8	9
			8	9
			8	9
RIVETS SPACED 6 DIAS. APART.	NUMBER OF RIVETS EACH SIDE OF BUTT	NUMBER OF RIVETS IN STRAKES CONNECTING SIDE LONGS TO WT BARS	8	9
			8	9
			8	9
			8	9
			8	9
RIVETS SPACED 5 DIAS. APART FOR 9 RIVETS EACH SIDE TRANS & BARS 6 DIAS. ELSEWHERE.	NUMBER OF RIVETS EACH SIDE OF BUTT	NUMBER OF RIVETS IN STRAKES CONNECTING SIDE LONGS TO WT BARS	8	9
			8	9
			8	9
			8	9
			8	9
RIVETS SPACED 4 DIAS. APART FOR 9 RIVETS EACH SIDE TRANS & BARS 6 DIAS. ELSEWHERE.	NUMBER OF RIVETS EACH SIDE OF BUTT	NUMBER OF RIVETS IN STRAKES CONNECTING SIDE LONGS TO WT BARS	8	9
			8	9
			8	9
			8	9
			8	9
BOTTOM LONGS - RIVETS SPACED 4 DIAS. APART FOR 9 RIVETS EACH SIDE TRANS & BARS 6 DIAS. ELSEWHERE.	NUMBER OF RIVETS EACH SIDE OF BUTT	NUMBER OF RIVETS IN STRAKES CONNECTING SIDE LONGS TO WT BARS	8	9
			8	9
			8	9
			8	9
			8	9
TANK TOP LONGS - RIVETS SPACED 4 DIAS. APART FOR 9 RIVETS EACH SIDE TRANS & BARS 6 DIAS. ELSEWHERE.	NUMBER OF RIVETS EACH SIDE OF BUTT	NUMBER OF RIVETS IN STRAKES CONNECTING SIDE LONGS TO WT BARS	8	9
			8	9
			8	9
			8	9
			8	9
DECK LONGS - RIVETS SPACED 6 DIAS. APART.	NUMBER OF RIVETS EACH SIDE OF BUTT	NUMBER OF RIVETS IN STRAKES CONNECTING SIDE LONGS TO WT BARS	8	9
			8	9
			8	9
			8	9
			8	9
TRANS. BEAM CONNECTION TO DECK: RIVETS SPACED 5 DIAS. APART.	NUMBER OF RIVETS EACH SIDE OF BUTT	NUMBER OF RIVETS IN STRAKES CONNECTING SIDE LONGS TO WT BARS	8	9
			8	9
			8	9
			8	9
			8	9
TRANS. FLOOR CONNECTION TO TANK TOP & SHELL: RIVETS SPACED 5 DIAS. APART 19" DIA.	NUMBER OF RIVETS EACH SIDE OF BUTT	NUMBER OF RIVETS IN STRAKES CONNECTING SIDE LONGS TO WT BARS	8	9
			8	9
			8	9
			8	9
			8	9
RIVETS IN TRANSVERSE FACE BARS SPACED 7 DIAS. APART 19" DIA.	NUMBER OF RIVETS EACH SIDE OF BUTT	NUMBER OF RIVETS IN STRAKES CONNECTING SIDE LONGS TO WT BARS	8	9
			8	9
			8	9
			8	9
			8	9



RIVETING IN MAIN TRANSVERSE
CONNECTION TO SHELL
RIVETS 19" DIA.

BOSS PLATING 15" THICK.

FOR DECK THICKNESSES SEE DECK PLAN
DECK LONGITUDINALS 165 x 76 x 9" B.A.

UPPER DECK

TRANSVERSE BEAM 330 x 10" B.A.

FACE BAR SINGLE 165 x 76 x 11" B.A.

FLANGED 100" B.A.

FOR DECK THICKNESSES SEE DECK PLAN
DECK LONGITUDINALS 165 x 76 x 9" B.A.

UPPER DECK

TRANSVERSE BEAM 330 x 10" B.A.

FACE BAR SINGLE 165 x 76 x 11" B.A.

FLANGED 100" B.A.

FOR DECK THICKNESSES SEE DECK PLAN
DECK LONGITUDINALS 165 x 76 x 9" B.A.

UPPER DECK

TRANSVERSE BEAM 330 x 10" B.A.

FACE BAR SINGLE 165 x 76 x 11" B.A.

FLANGED 100" B.A.

FOR DECK THICKNESSES SEE DECK PLAN
DECK LONGITUDINALS 165 x 76 x 9" B.A.

UPPER DECK

TRANSVERSE BEAM 330 x 10" B.A.

FACE BAR SINGLE 165 x 76 x 11" B.A.

FLANGED 100" B.A.

FOR DECK THICKNESSES SEE DECK PLAN
DECK LONGITUDINALS 165 x 76 x 9" B.A.

UPPER DECK

TRANSVERSE BEAM 330 x 10" B.A.

FACE BAR SINGLE 165 x 76 x 11" B.A.

FLANGED 100" B.A.

FOR DECK THICKNESSES SEE DECK PLAN
DECK LONGITUDINALS 165 x 76 x 9" B.A.

UPPER DECK

TRANSVERSE BEAM 330 x 10" B.A.

FACE BAR SINGLE 165 x 76 x 11" B.A.

FLANGED 100" B.A.

FOR DECK THICKNESSES SEE DECK PLAN
DECK LONGITUDINALS 165 x 76 x 9" B.A.

UPPER DECK

TRANSVERSE BEAM 330 x 10" B.A.

FACE BAR SINGLE 165 x 76 x 11" B.A.

FLANGED 100" B.A.

POOP SIDE 8" B.A.
POOP & TAIL 75 x 75 x 8" B.A.
SHEER STRAKE 1350" x 10" B.A.
L IN 17" B.A.
A 165 x 76 x 11" B.A.

POOP SIDE 8" B.A.
POOP & TAIL 75 x 75 x 8" B.A.
SHEER STRAKE 1350" x 10" B.A.
L IN 17" B.A.
A 165 x 76 x 11" B.A.

POOP SIDE 8" B.A.
POOP & TAIL 75 x 75 x 8" B.A.
SHEER STRAKE 1350" x 10" B.A.
L IN 17" B.A.
A 165 x 76 x 11" B.A.

POOP SIDE 8" B.A.
POOP & TAIL 75 x 75 x 8" B.A.
SHEER STRAKE 1350" x 10" B.A.
L IN 17" B.A.
A 165 x 76 x 11" B.A.

POOP SIDE 8" B.A.
POOP & TAIL 75 x 75 x 8" B.A.
SHEER STRAKE 1350" x 10" B.A.
L IN 17" B.A.
A 165 x 76 x 11" B.A.

POOP SIDE 8" B.A.
POOP & TAIL 75 x 75 x 8" B.A.
SHEER STRAKE 1350" x 10" B.A.
L IN 17" B.A.
A 165 x 76 x 11" B.A.

POOP SIDE 8" B.A.
POOP & TAIL 75 x 75 x 8" B.A.
SHEER STRAKE 1350" x 10" B.A.
L IN 17" B.A.
A 165 x 76 x 11" B.A.

POOP SIDE 8" B.A.
POOP & TAIL 75 x 75 x 8" B.A.
SHEER STRAKE 1350" x 10" B.A.
L IN 17" B.A.
A 165 x 76 x 11" B.A.

POOP SIDE 8" B.A.
POOP & TAIL 75 x 75 x 8" B.A.
SHEER STRAKE 1350" x 10" B.A.
L IN 17" B.A.
A 165 x 76 x 11" B.A.

POOP SIDE 8" B.A.
POOP & TAIL 75 x 75 x 8" B.A.
SHEER STRAKE 1350" x 10" B.A.
L IN 17" B.A.
A 165 x 76 x 11" B.A.

POOP SIDE 8" B.A.
POOP & TAIL 75 x 75 x 8" B.A.
SHEER STRAKE 1350" x 10" B.A.
L IN 17" B.A.
A 165 x 76 x 11" B.A.

POOP SIDE 8" B.A.
POOP & TAIL 75 x 75 x 8" B.A.
SHEER STRAKE 1350" x 10" B.A.
L IN 17" B.A.
A 165 x 76 x 11" B.A.

POOP SIDE 8" B.A.
POOP & TAIL 75 x 75 x 8" B.A.
SHEER STRAKE 1350" x 10" B.A.
L IN 17" B.A.
A 165 x 76 x 11" B.A.

POOP SIDE 8" B.A.
POOP & TAIL 75 x 75 x 8" B.A.
SHEER STRAKE 1350" x 10" B.A.
L IN 17" B.A.
A 165 x 76 x 11" B.A.

POOP SIDE 8" B.A.
POOP & TAIL 75 x 75 x 8" B.A.
SHEER STRAKE 1350" x 10" B.A.
L IN 17" B.A.
A 165 x 76 x 11" B.A.

POOP SIDE 8" B.A.
POOP & TAIL 75 x 75 x 8" B.A.
SHEER STRAKE 1350" x 10" B.A.
L IN 17" B.A.
A 165 x 76 x 11" B.A.

POOP SIDE 8" B.A.
POOP & TAIL 75 x 75 x 8" B.A.
SHEER STRAKE 1350" x 10" B.A.
L IN 17" B.A.
A 165 x 76 x 11" B.A.

POOP SIDE 8" B.A.
POOP & TAIL 75 x 75 x 8" B.A.
SHEER STRAKE 1350" x 10" B.A.
L IN 17" B.A.
A 165 x 76 x 11" B.A.

POOP SIDE 8" B.A.
POOP & TAIL 75 x 75 x 8" B.A.
SHEER STRAKE 1350" x 10" B.A.
L IN 17" B.A.
A 165 x 76 x 11" B.A.

POOP SIDE 8" B.A.
POOP & TAIL 75 x 75 x 8" B.A.
SHEER STRAKE 1350" x 10" B.A.
L IN 17" B.A.
A 165 x 76 x 11" B.A.

POOP SIDE 8" B.A.
POOP & TAIL 75 x 75 x 8" B.A.
SHEER STRAKE 1350" x 10" B.A.
L IN 17" B.A.
A 165 x 76 x 11" B.A.

POOP SIDE 8" B.A.
POOP & TAIL 75 x 75 x 8" B.A.
SHEER STRAKE 1350" x 10" B.A.
L IN 17" B.A.
A 165 x 76 x 11" B.A.

POOP SIDE 8" B.A.
POOP & TAIL 75 x 75 x 8" B.A.
SHEER STRAKE 1350" x 10" B.A.
L IN 17" B.A.
A 165 x 76 x 11" B.A.

POOP SIDE 8" B.A.
POOP & TAIL 75 x 75 x 8" B.A.
SHEER STRAKE 1350" x 10" B.A.
L IN 17" B.A.
A 165 x 76 x 11" B.A.

POOP SIDE 8" B.A.
POOP & TAIL 75 x 75 x 8" B.A.
SHEER STRAKE 1350" x 10" B.A.
L IN 17" B.A.
A 165 x 76 x 11" B.A.

POOP SIDE 8" B.A.
POOP & TAIL 75 x 75 x 8" B.A.
SHEER STRAKE 1350" x 10" B.A.
L IN 17" B.A.
A 165 x 76 x 11" B.A.

POOP SIDE 8" B.A.
POOP & TAIL 75 x 75 x 8" B.A.
SHEER STRAKE 1350" x 10" B.A.
L IN 17" B.A.
A 165 x 76 x 11" B.A.

POOP SIDE 8" B.A.
POOP & TAIL 75 x 75 x 8" B.A.
SHEER STRAKE 1350" x 10" B.A.
L IN 17" B.A.
A 165 x 76 x 11" B.A.

POOP SIDE 8" B.A.
POOP & TAIL 75 x 75 x 8" B.A.
SHEER STRAKE 1350" x 10" B.A.
L IN 17" B.A.
A 165 x 76 x 11" B.A.

POOP SIDE 8" B.A.
POOP & TAIL 75 x 75 x 8" B.A.
SHEER STRAKE 1350" x 10" B.A.
L IN 17" B.A.
A 165 x 76 x 11" B.A.

POOP SIDE 8" B.A.
POOP & TAIL 75 x 75 x 8" B.A.
SHEER STRAKE 1350" x 10" B.A.
L IN 17" B.A.
A 165 x 76 x 11" B.A.

POOP SIDE 8" B.A.
POOP & TAIL 75 x 75 x 8" B.A.
SHEER STRAKE 1350" x 10" B.A.
L IN 17" B.A.
A 165 x 76 x 11" B.A.

POOP SIDE 8" B.A.
POOP & TAIL 75 x 75 x 8" B.A.
SHEER STRAKE 1350" x 10" B.A.
L IN 17" B.A.
A 165 x 76 x 11" B.A.

POOP SIDE 8" B.A.
POOP & TAIL 75 x 75 x 8" B.A.
SHEER STRAKE 1350" x 10" B.A.
L IN 17" B.A.
A 165 x 76 x 11" B.A.

POOP SIDE 8" B.A.
POOP & TAIL 75 x 75 x 8" B.A.
SHEER STRAKE 1350" x 10" B.A.
L IN 17" B.A.
A 165 x 76 x 11" B.A.

POOP SIDE 8" B.A.
POOP & TAIL 75 x 75 x 8" B.A.
SHEER STRAKE 1350" x 10" B.A.
L IN 17" B.A.
A 165 x 76 x 11" B.A.

MIDSHIP SECTION

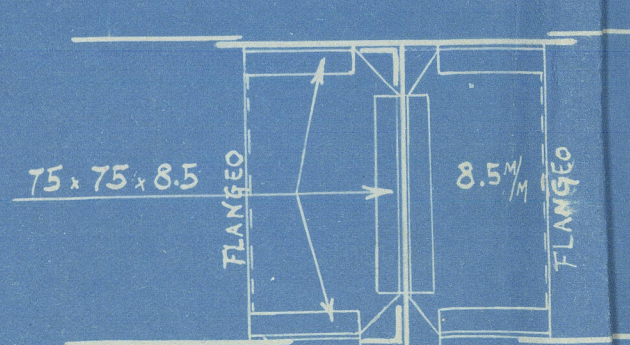
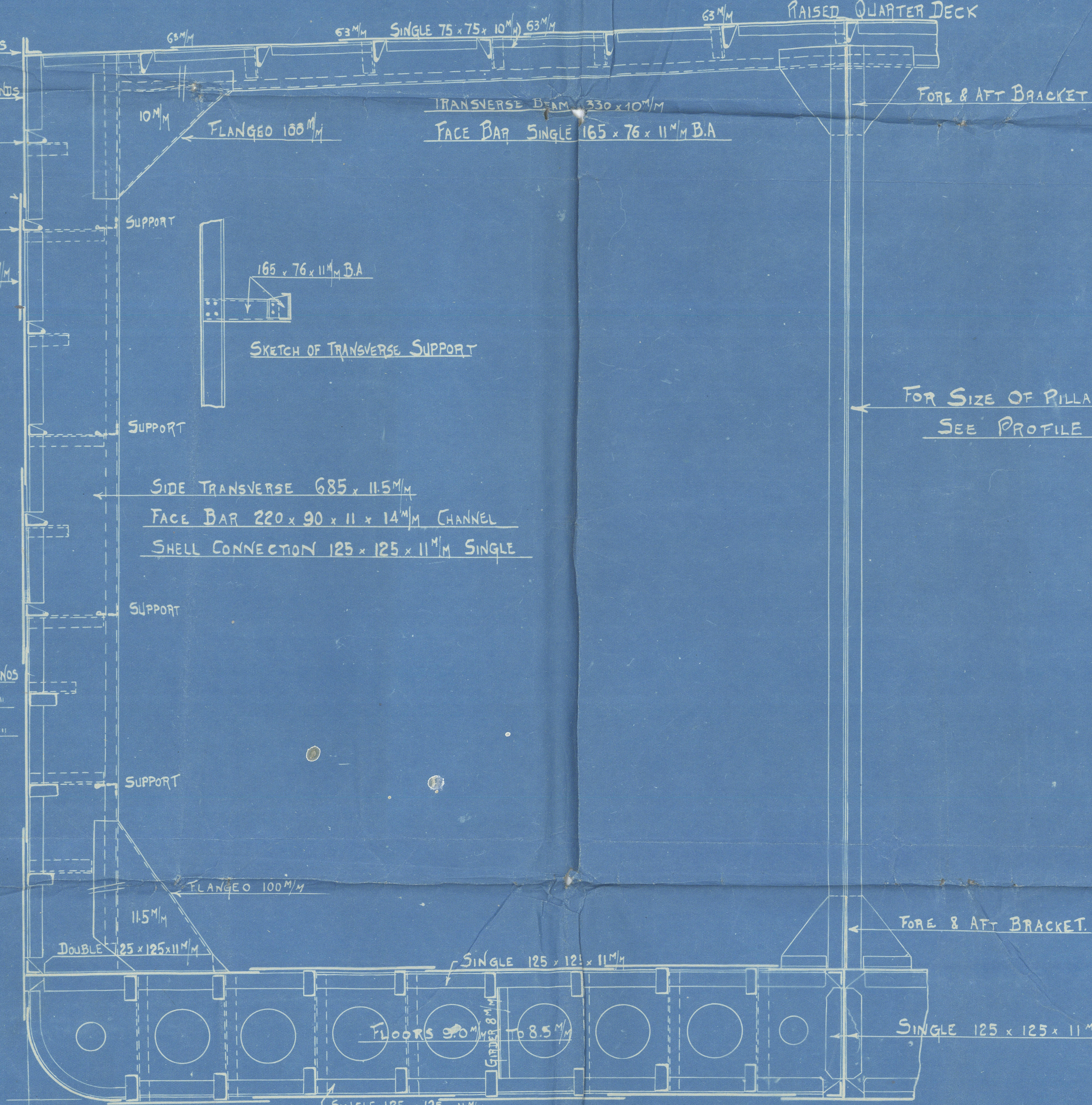
DIMENSIONS: LENGTH B.P. 279'-0" BREADTH M¹⁰ 41'-2" DEPTH M¹⁰ 21'-11"
RAISED QUARTER DECK 4'-6"

"ISHERWOOD SYSTEM" PATENT.

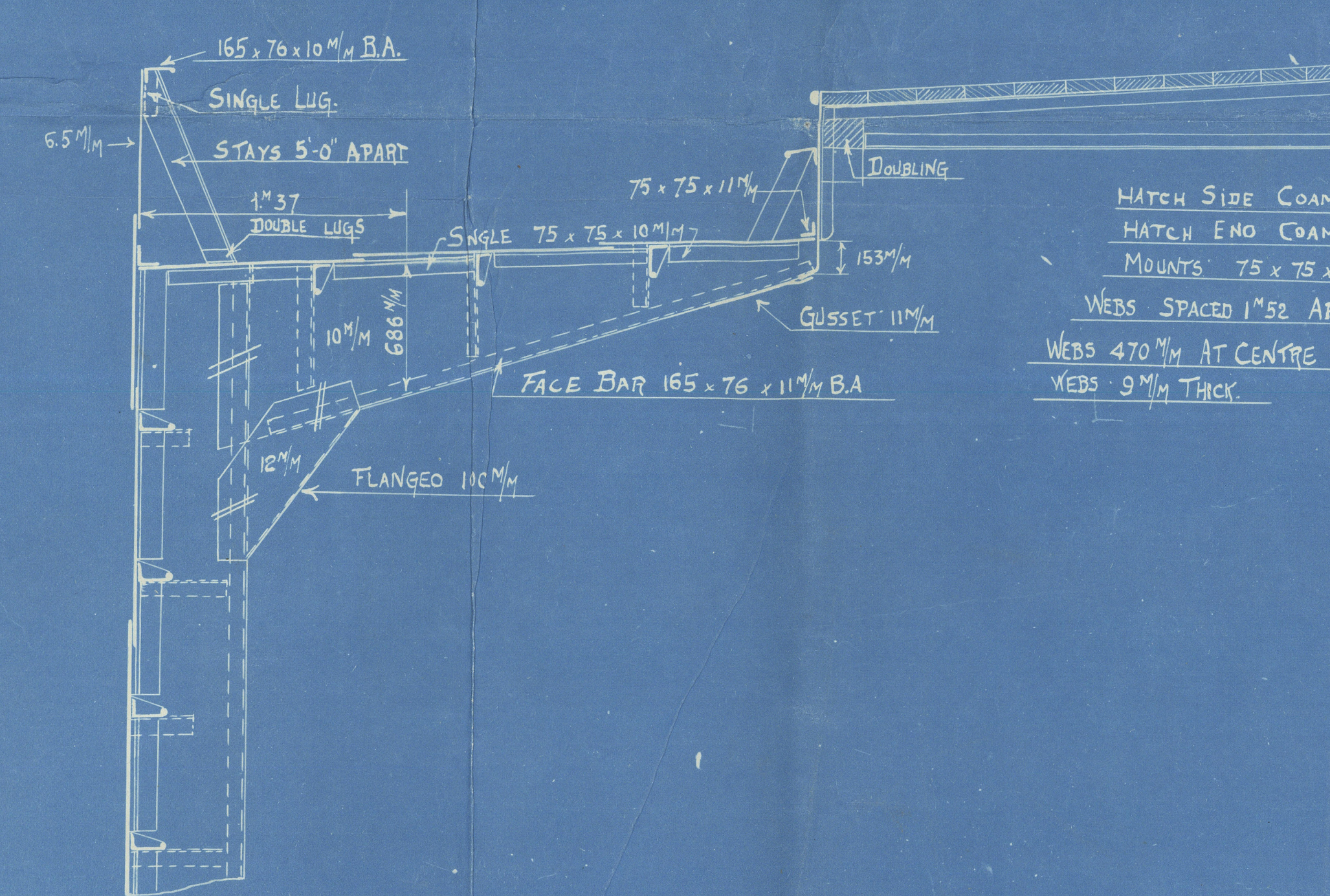
SCALE 1/25

EQUIPMENT AS PER RULE.

FOR DECK THICKNESSES SEE DECK PLAN
DECK LONGITUDINALS 165 x 76 x 9" B.A.

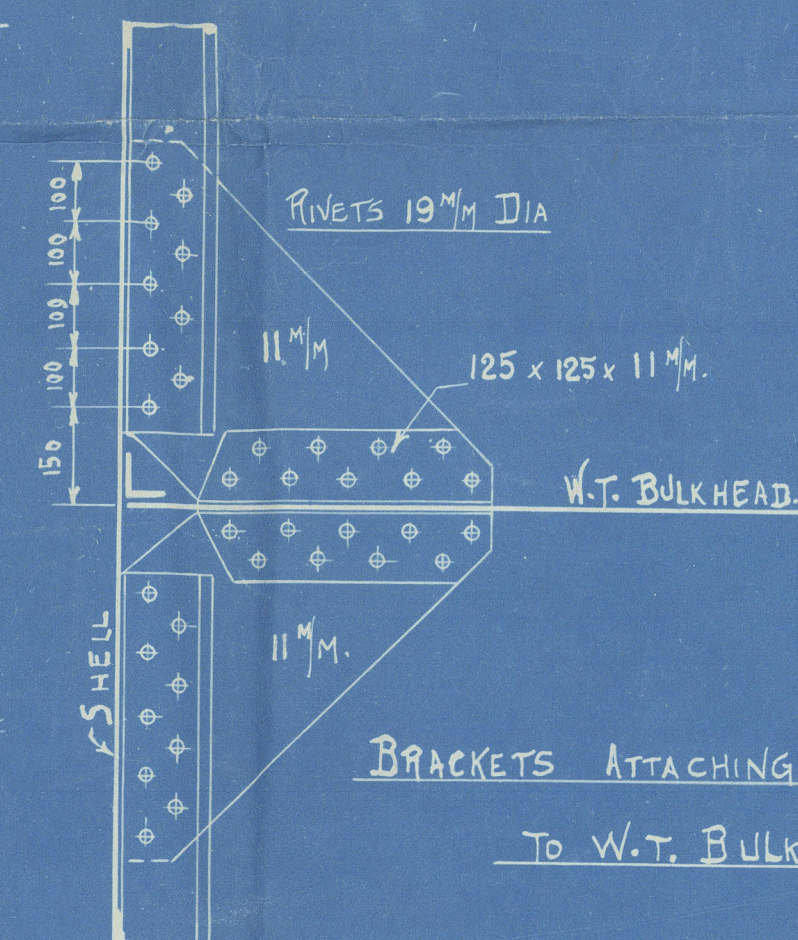


ONE INTERMEDIATE BRACKET BETWEEN
TRANSVERSE AT CENTRE

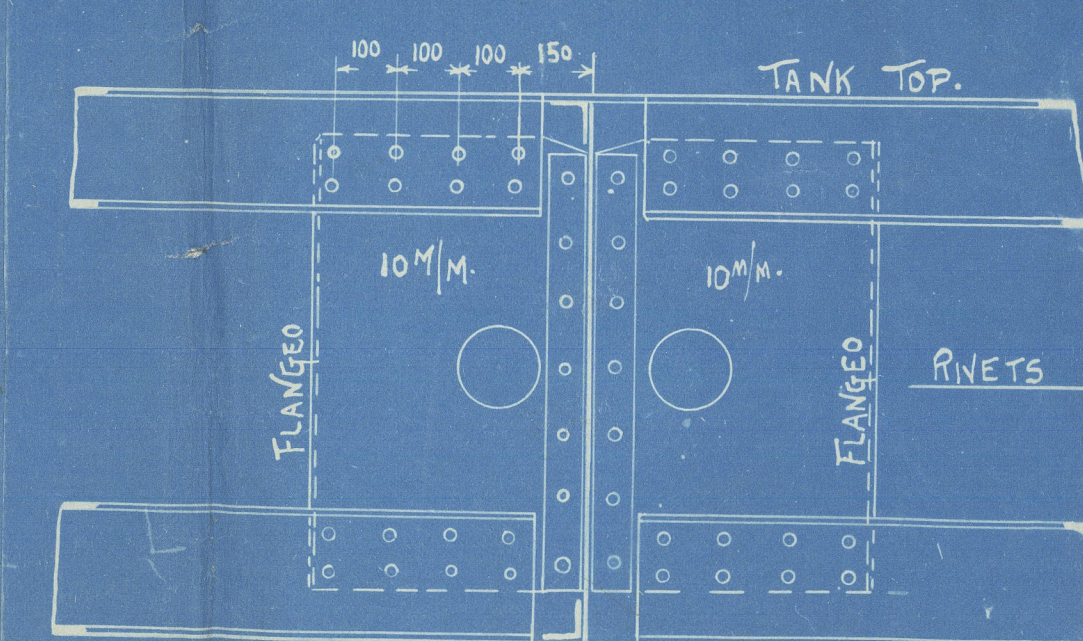


HATCH SIDE COAMING 11" B.A.
HATCH END COAMING 11" B.A.
MOUNTS 75 x 75 x 11" B.A.
WEBS SPACED 1" 52' APART.
WEBS 470" AT CENTRE 235" AT ENDS
WEBS 9" THICK

CANTILEVERS AT HATCH SIDES TO DISPENSE WITH PILLARS.



BRACKETS ATTACHING SIDE LONGS
TO TANK TOP.



SKETCH OF BRACKETS ATTACHING BOTTOM SHELL & TANK TOP.
LONGITUDINALS TO TANK DIVISIONS

SIGNED
C. G. G.
1. 10. 18

G. A. FLE MIGLIARDI
SAYONA
ITALY

$$\begin{array}{r} 96 \\ 12 \\ \hline 118 + \end{array}$$

$$\begin{array}{r} 1409 \\ 4. \\ \hline 13 \\ 4 \\ \hline 17 \end{array} \quad \begin{array}{l} n=1 \\ 102 \end{array}$$



© 2020

Lloyd's Register
Foundation

LETTER

5/5 N^o 1 -

Brugardi
Sword
muship action

N^o 1



W1127-0079
© 2020

Lloyd's Register
Foundation