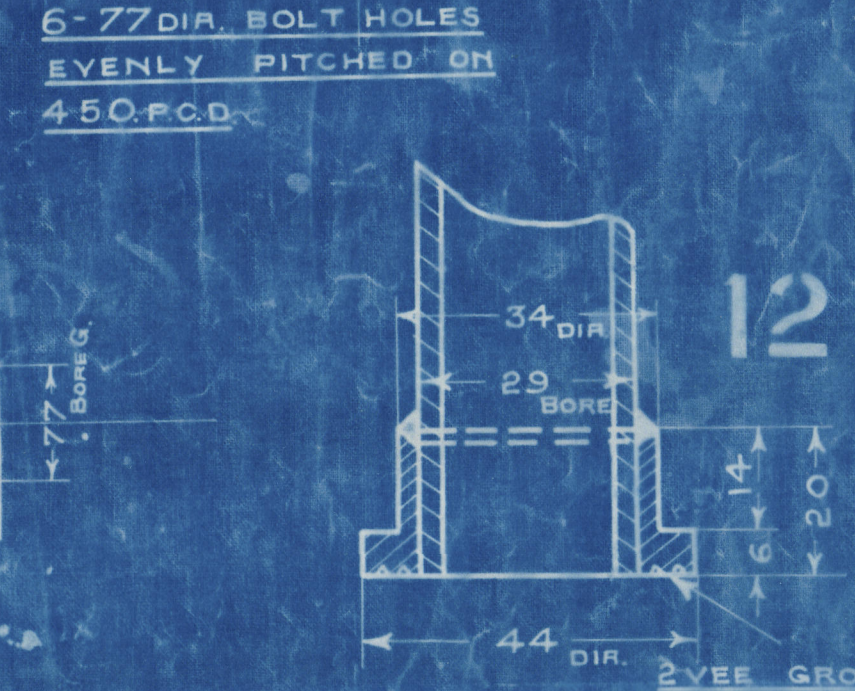
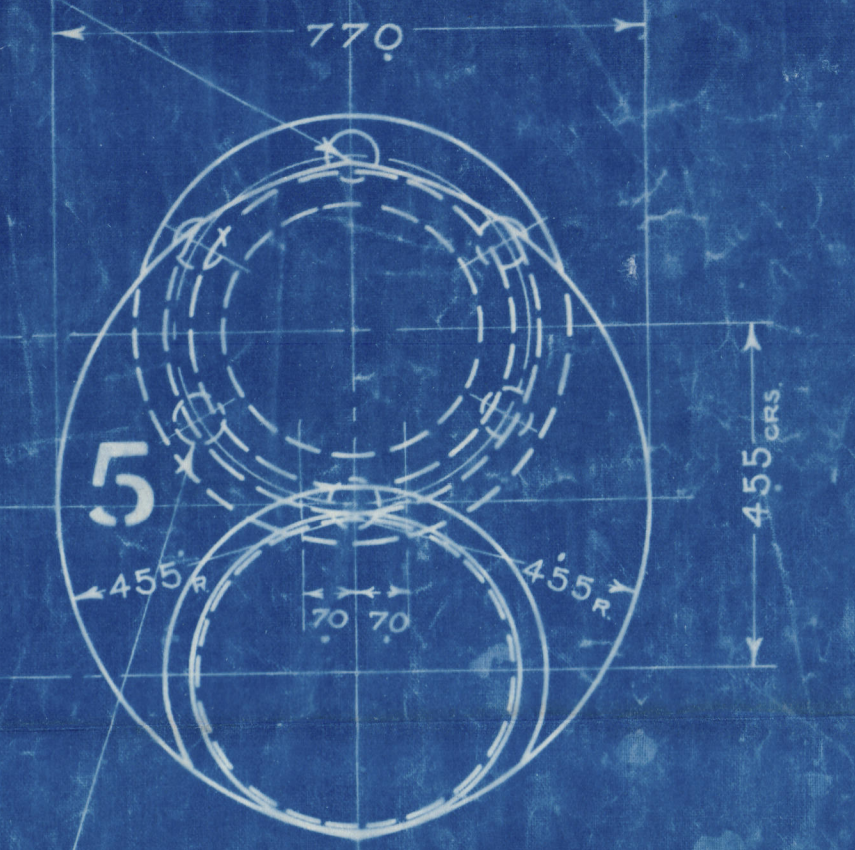
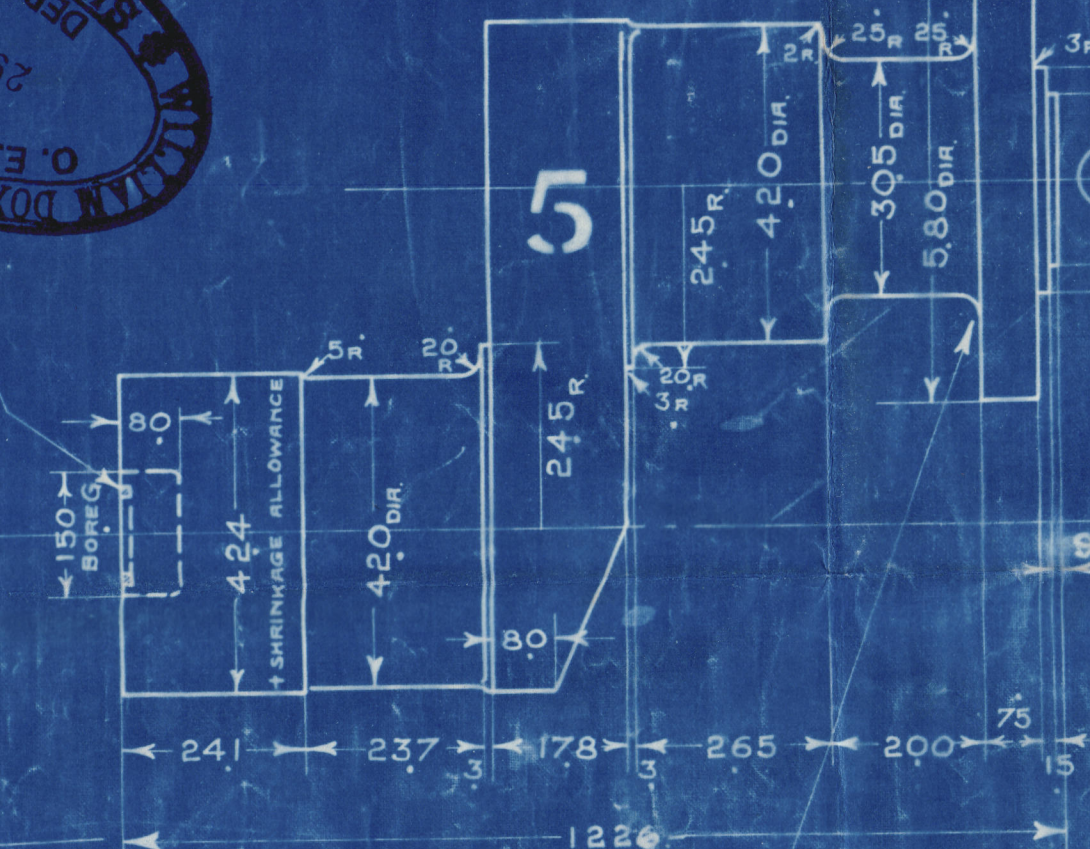
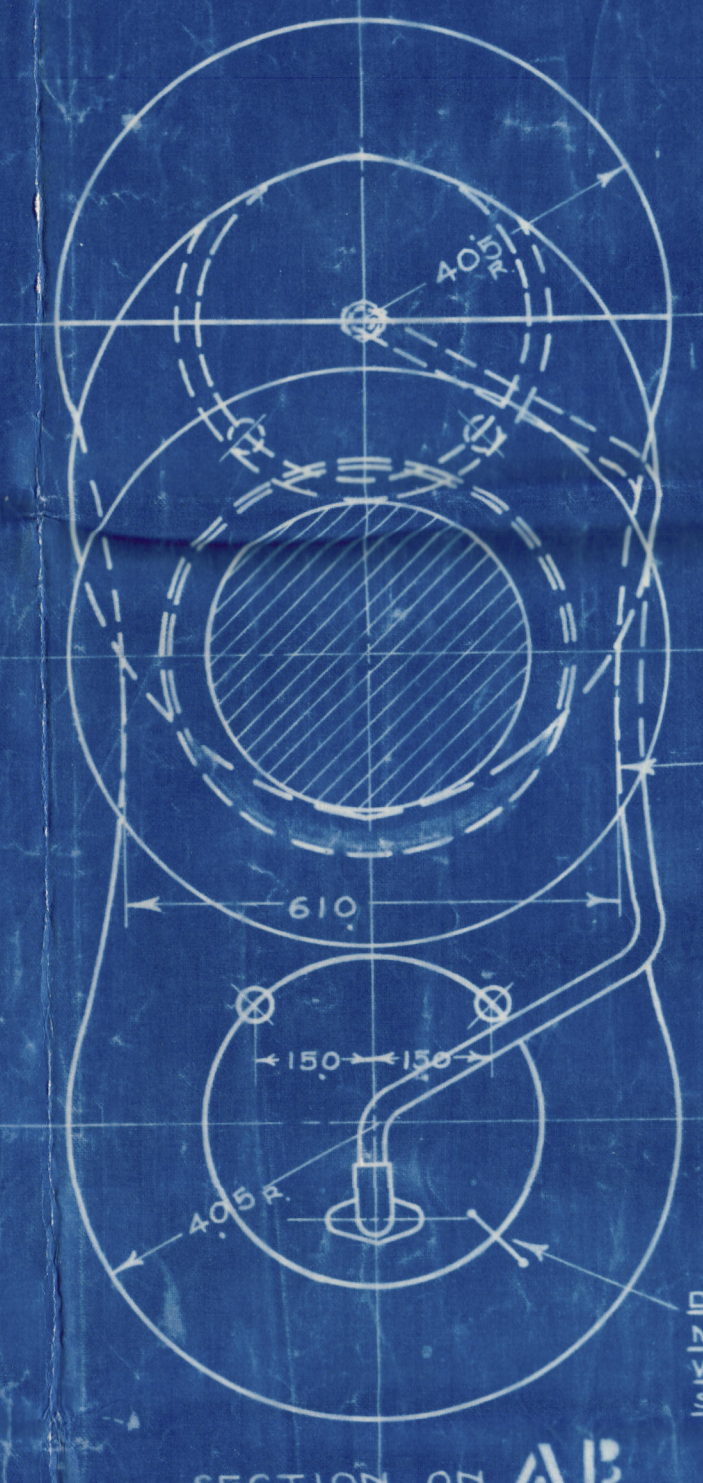


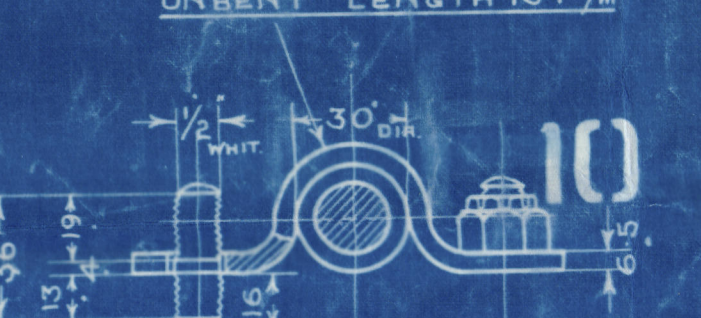
ANY OF THE HOLES MARKED TO BE IN LINE WITH HOLE ON INTERMEDIATE SHAFTING.

A RING OF ABOUT 1/4 SQ SECTION TO BE TREPPANNED WITH IDENTIFICATION MARKS & SENT TO W.D.S. BEFORE SHRINKING ON CRANKWEB. GRINGS IN ALL.

SHARP CORNERS TO BE ROUNDED OFF.



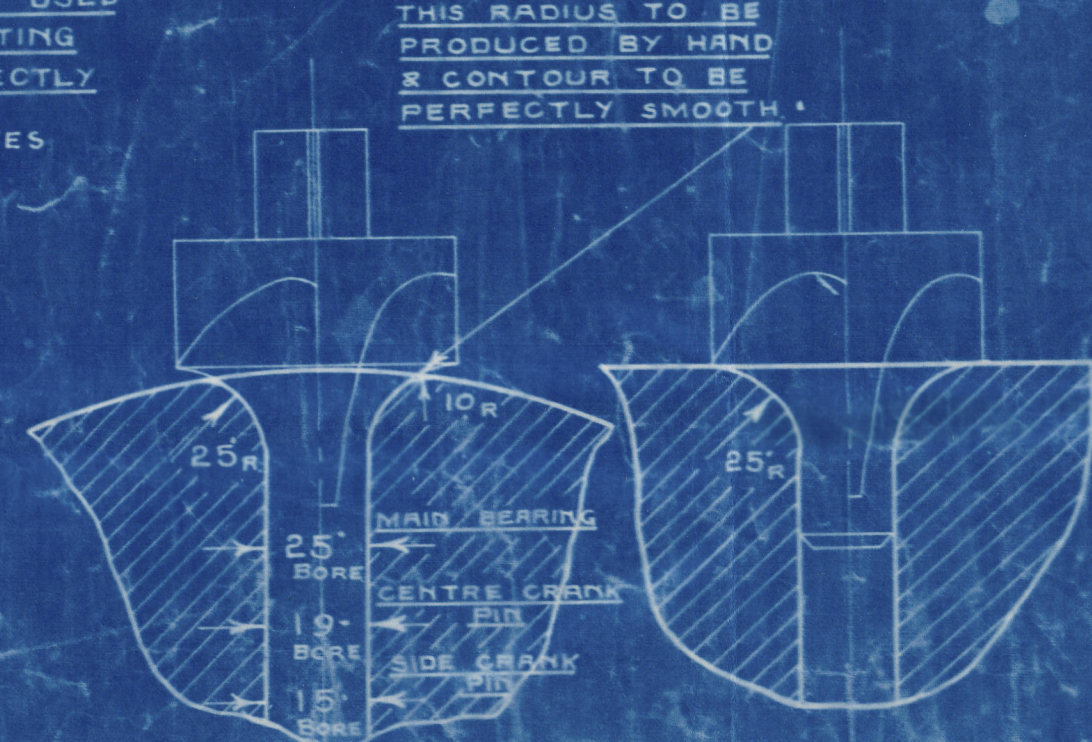
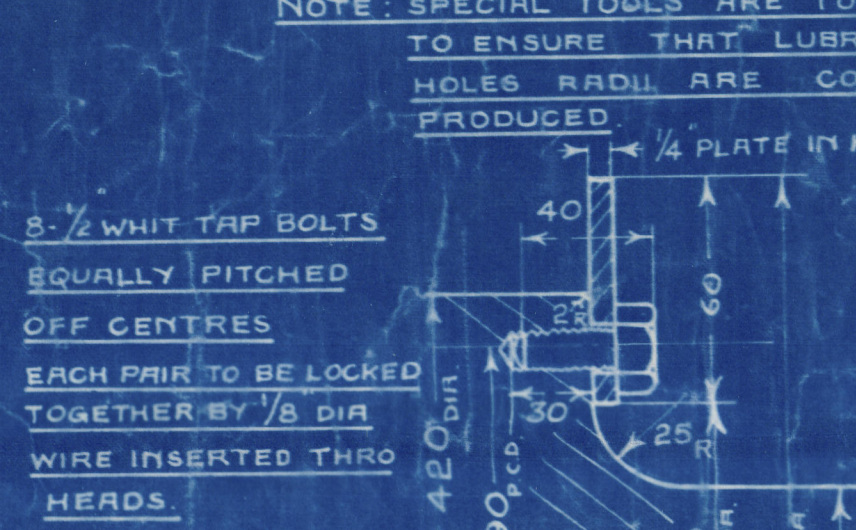
DETAIL OF FORK END COUPLING



DISTINCT LOCATION MARKS MADE THUS ON WEBS & PINS OF ALL SHRUNK JOINTS

SEATING FOR I.P. UNION

NOTE: SPECIAL TOOLS ARE TO BE USED TO ENSURE THAT LUBRICATING HOLES RADII ARE CORRECTLY PRODUCED



PART NO.	DESCRIPTION	QTY	MATERIAL	REMARKS
19	1/2 WHIT TAP BOLTS FOR REF 18	8	M.S.	
18	OIL DEFLECTOR PLATE FOR REF 15	1	M.S.	1/4 PLATE IN HALVES
17	COPPER WASHER FOR REF 16	1	COPPER	SUPPLIED BY W.D.S.
16	1/8 B.S.P. PLUG FOR FORDEN OF SHAFT	1	BR.	
15	WHITEMETAL WASHERS	12	W.M.	EX STOCK NO. B.D. 254
14	1/8 WHIT STUDS & NUTS FOR REF 13	6	M.S.	
13	LOCKING PLATE FOR REF 11	6	BR.	
12	TAIL FOR L.P. SOCKET COUPLG	6	BRASSING METAL	
11	SOCKET NUT	6	M.S.	FOR DETAIL SEE DRG 3130
10	1/2 STUDS & CASTLE NUTS	12	M.S.	
9	PIPE CLIPS	6	M.S.	
8	1/8 BORE PIPE	6	STEEL	SUPPLIED BY W.D.S.
7	COUPLING BOLTS NUTS & PLATE	1	M.S.	TO BE OF HARDER MATERIAL THAN CRANKPIN & WEB
6	DOWEL PINS	24	M.S.	
5	SIDE WEB & JOURNAL	1	I.S.	
4	SIDE WEBS & JOURNAL	2	I.S.	
3	THRUST SHAFT & SIDE WEB	1	I.S.	
2	CENTRE CRANKPIN	3	I.S.	
1	CENTRE CRANKWEB	6	I.S.	

Wm dea & Sons Ld.

Contract N° 642.

copy of app?

Frank Kenschaft

"Cliftonhall"

SUNDERLAND RPT. NO. 32381.

RETAIN

© 2020



Lloyd's Register
Foundation

W1126-0136