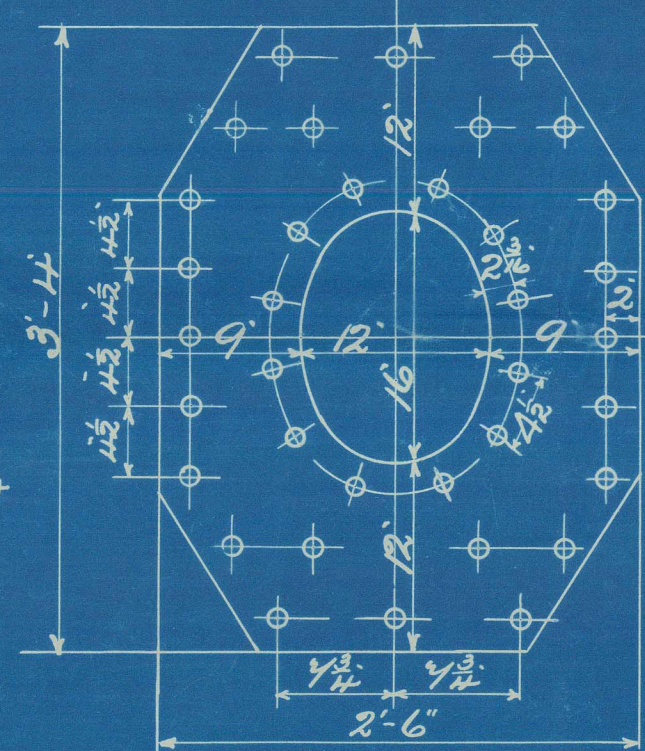


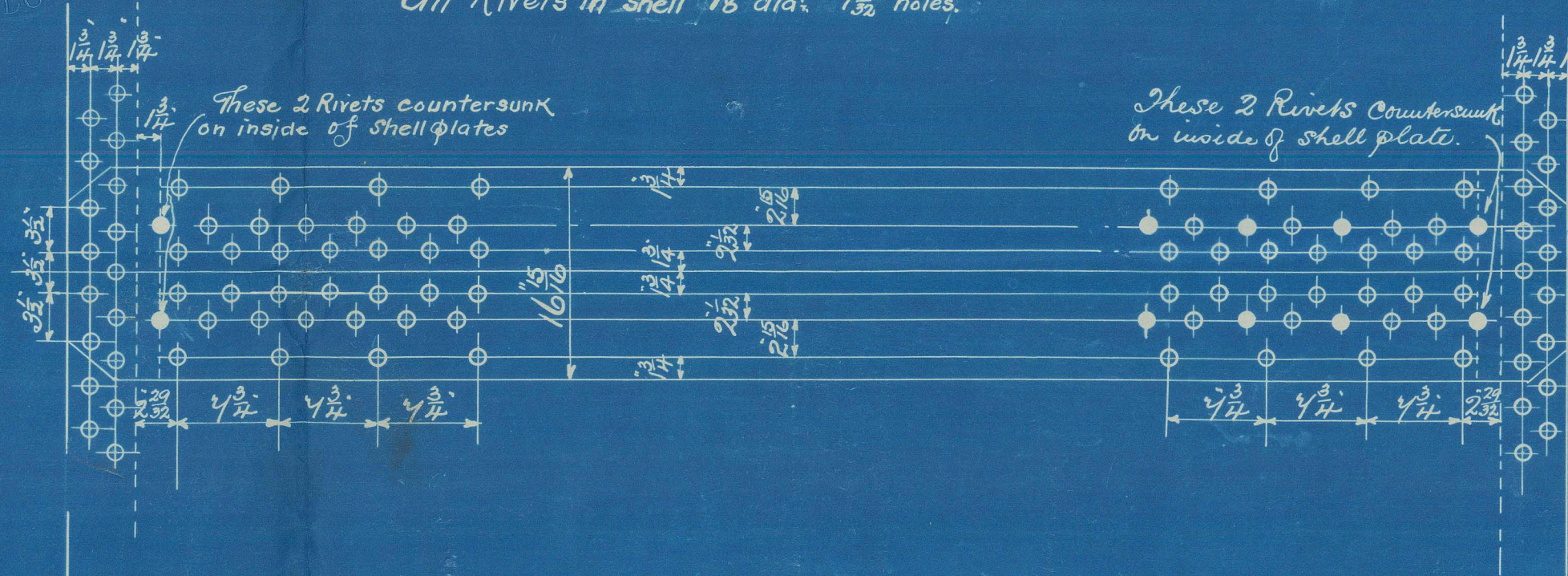
DIA. OF BOILER 12'-9"
 LENGTH OF DO 10'-6"
 NUMBER OF TUBES 178.
 LENGTH OF DO 6'-5" between plates
 DIA. OF DO 3 1/2" AREA THRU TUBES
 HEATING SURFACE IN TUBES 1046 Sq. feet.
 TOTAL HEATING SURFACE 1320 Sq. feet.
 FIRE BAR SURFACE 5'-0" Bars 36 Sq. feet.
 DIA. OF SAFETY VALVES
 CUBIC FEET OF STEAM SPACE 2744 Cuft.
 WORKING PRESSURE 200 LBS. LLOYDS.

Doubling 1/8" thick.
 Rivets 1/2" Holes 1/2"
 Filled outside shell with short axis longitudinally.



Note! Studs on manhole
 doors are not to project
 through nuts when nuts
 are tightened up.

Circumferential Seams 3/4" pitch
 1/2" plate 66.
 1/2" Rivet 45.5.
 Longitudinal Seams 1/2" pitch
 1/2" plate 85.
 1/2" Rivet 89.5.
 Double Butt Straps 1/8" thick outside, 1/2" thick inside.
 All Rivets in shell 1/2" dia. 1/2" holes.

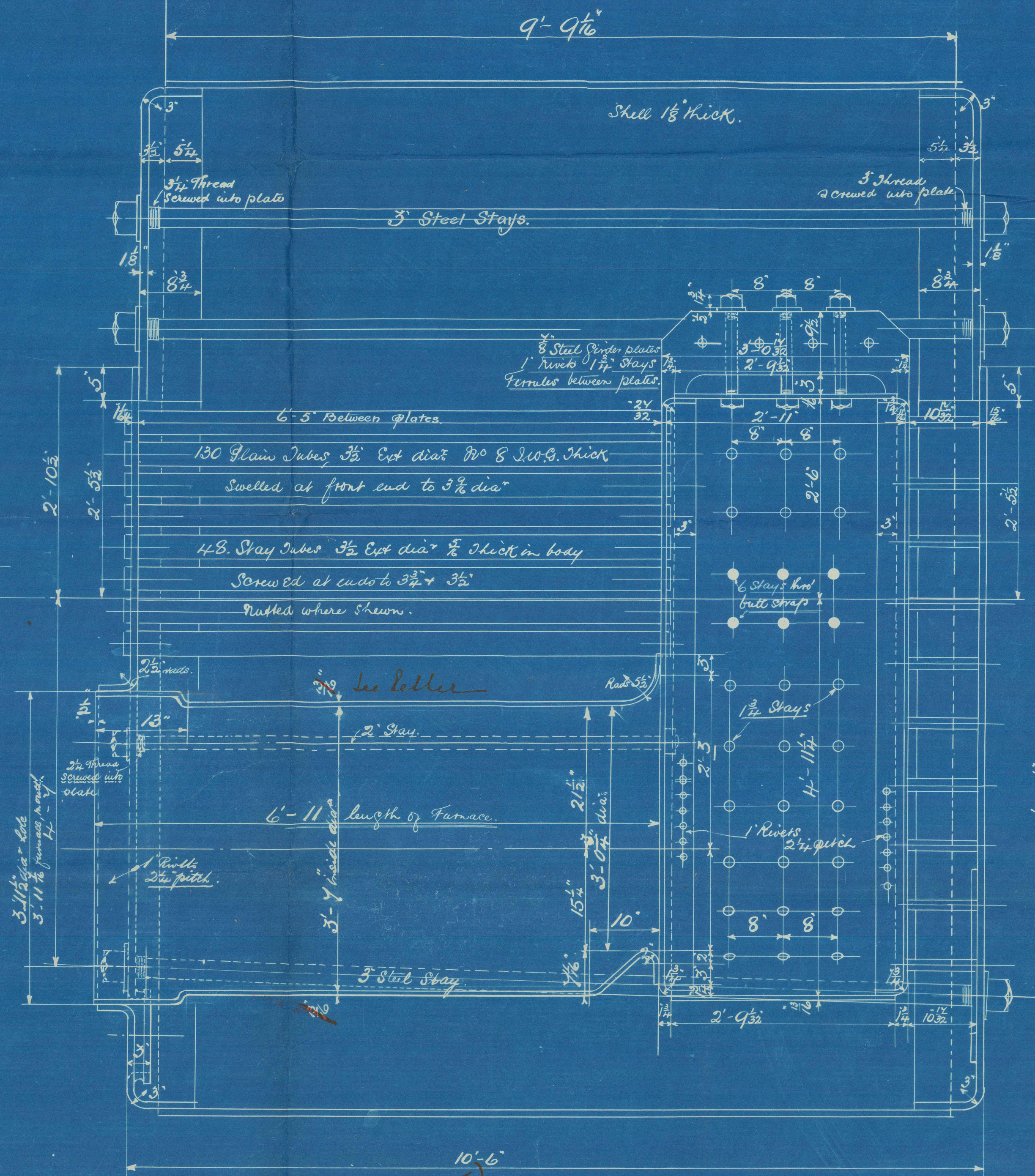
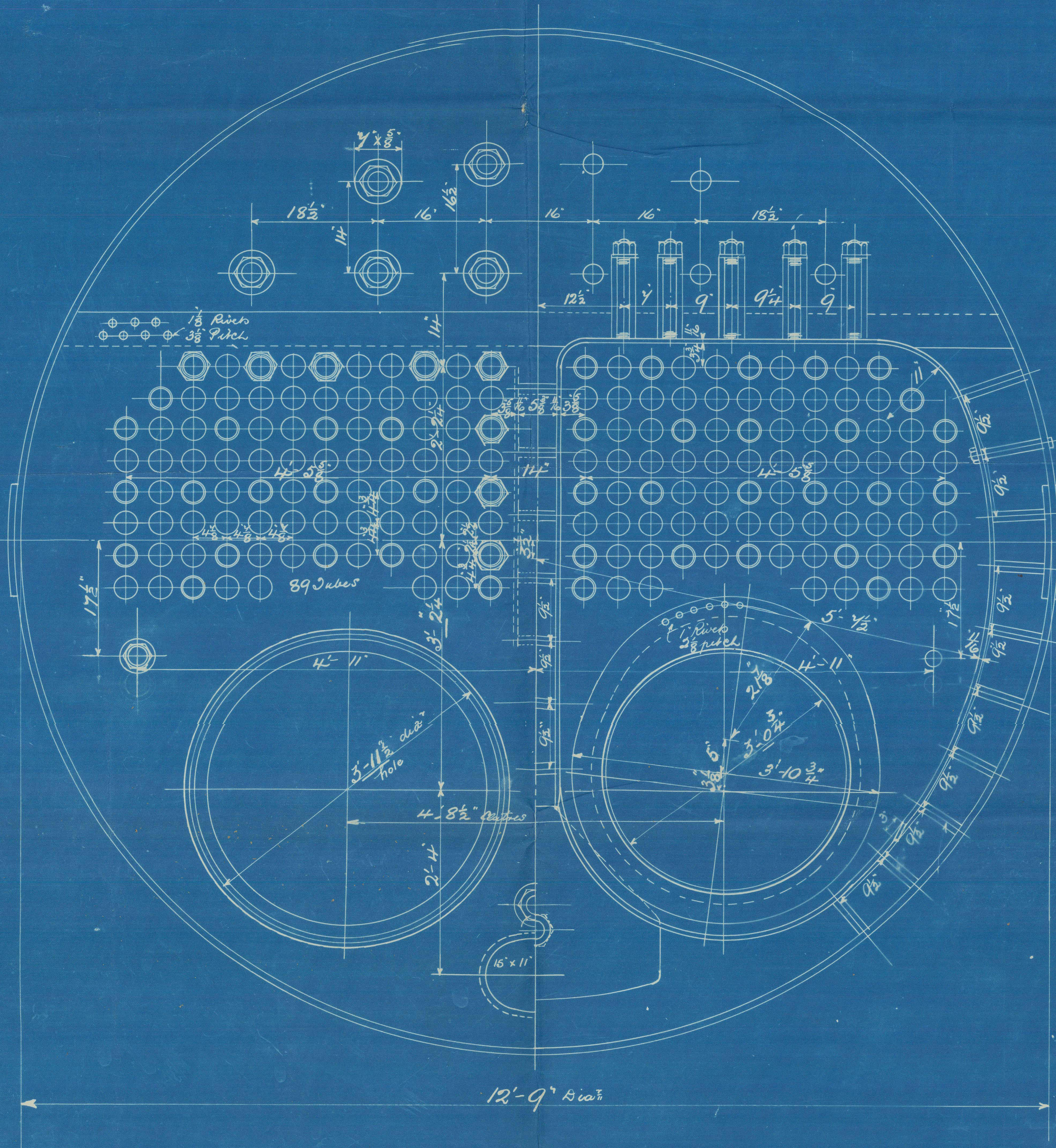


Note!
 The plates, rivets & stays of steel by the Siemens Martin process
 All Rivet holes drilled throughout the boiler. Those in shell
 after the plates are bent.
 All flanged plates to be annealed after the plates are bent.
 Stays are not to be welded. Tubes are of iron.
 The tensile strength of the shell plates & butt straps
 to be between 29 to 33 tons per sq. inch.
 The Combustion Chamber stays are screwed into both plates &
 fitted with nuts at each end of stay.

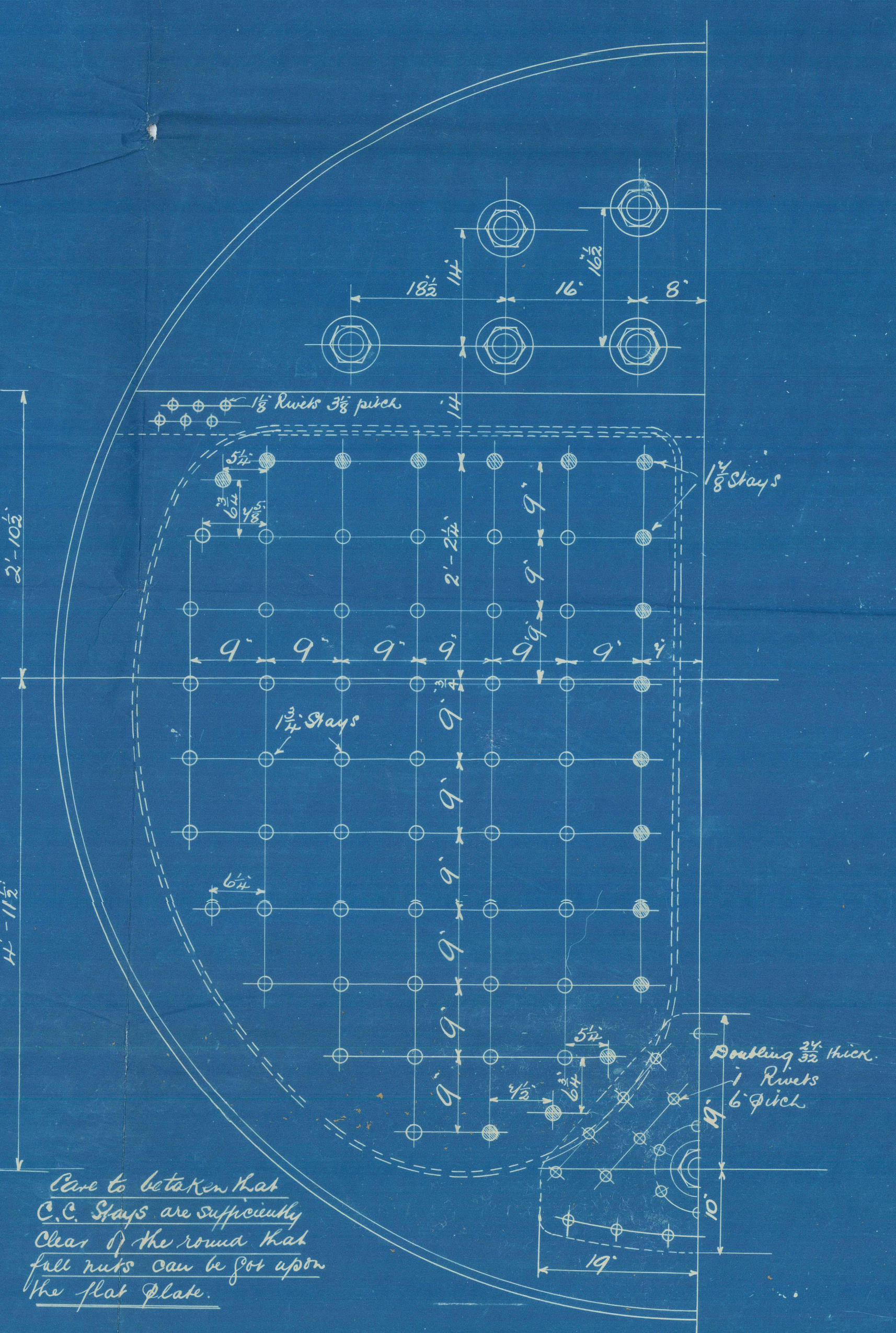
Particulars of Staying

Stay	Dia.	No. of Heads per inch	Eff. area @ bottom of Head D inches
Steam Space Stays	3	6	6.10
Tube plate Stays	2 1/2	8	2.66
Bottom Stays	3	6	6.10
C. C. Stays	1 1/2	10	2.394
Stay Tubes	3 1/2	9	2.066

R

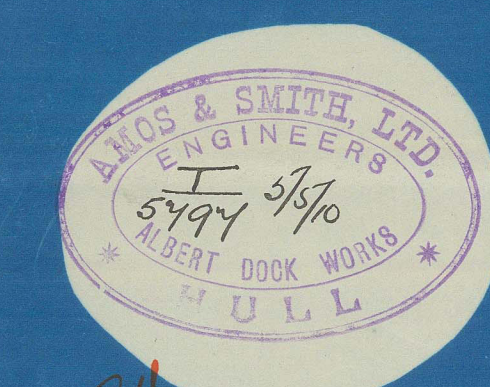


Care to be taken that
 C.C. Stays are sufficiently
 clear of the round that
 full nuts can be put upon
 the flat plate.



AMOS & SMITH LTD
 ENGINEERS
 ALBERT DOCK WORKS
 HULL

STEEL BOILER N° 1841



TITLE Steel Boiler
 FOR H.M.V. Messrs. P. & M. Ltd.
 DATE 2/5/10
 ORDER N° 1841
 IF MADE
 SCALE 1" = 1'00"

10278

From AMOS & SMITH, Ltd., HULL.

Enclosure for

Messrs Lloyd's Surveyors
Hull

W1125-0091 1/2

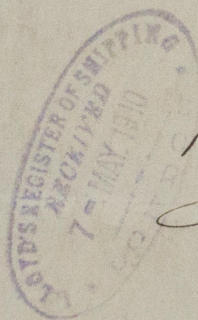
- Amended Boiler Plan -

Amos & Smiths

No 1841

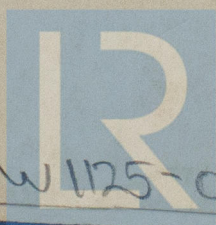
W.P. 200 lbs

"Cabo S. Vicente"



²²
s/ H. A. L. Russell
Hull Report
No. 23000

RETAIN



© 2021

W1125-0091 2 1/2

Lloyd's Register
Foundation