

HEATING SURFACE

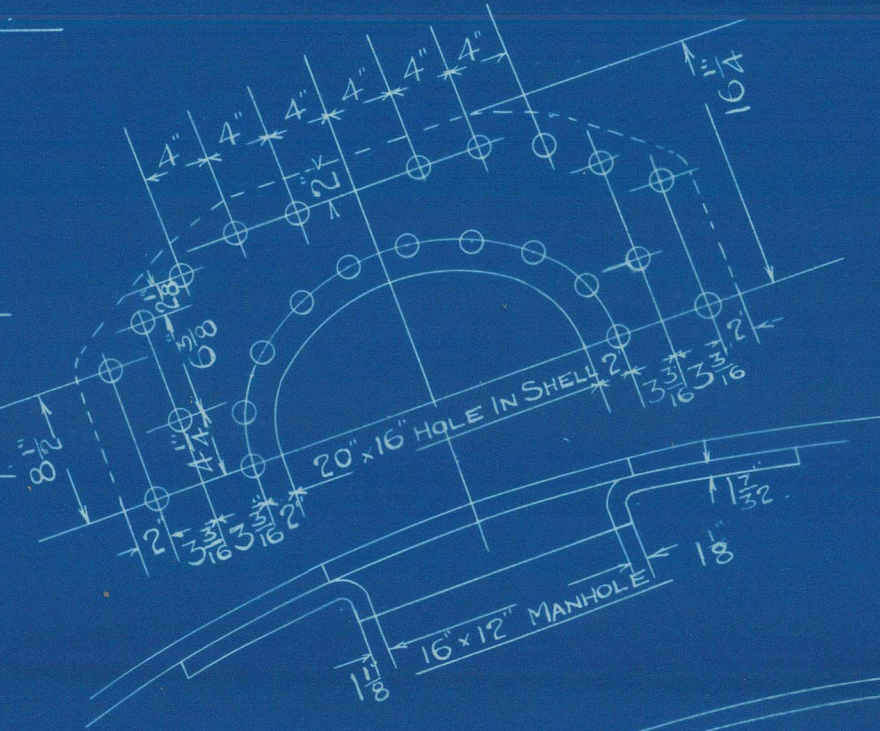
TUBES	2123 SQ. FEET
FURNACES	175 "
COMBUSTION CHAMBERS	244 "
BACK TUBE PLATE	49 "
FRONT TUBE PLATE	44 "
TOTAL ONE BOILER	2635 "
TOTAL THREE BOILERS	7905 "

GRATE SURFACE 5'-6" FIREBARS 63 # ONE BOILER
" " " " " THREE "

WORKING PRESSURE " 180 #
TEST PRESSURE " 320 #

BOILERS TO WORK UNDER HOWDENS FORCED DRAUGHT & TO BURN
EITHER COAL OR OIL

16" x 12" MANHOLE FITTED WITH
CORRUGATED TYPE DOOR
DOUBLING SECURED TO SHELL
BY 44 RIVETS 1 3/8" DIA HOLES



BOILER. CONTRACT N° 875.

MESSRS SIR W.G. ARMSTRONG WHITWORTH SHIP N° 1036.

TO BE CONSTRUCTED TO PASS LLOYDS REQUIREMENTS.

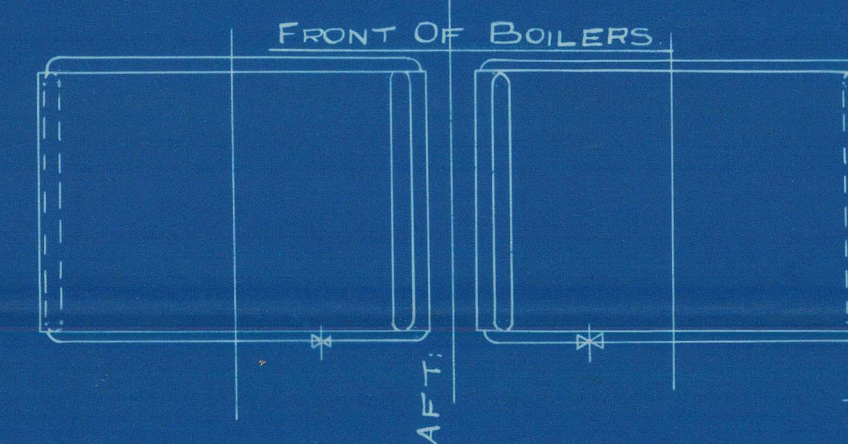
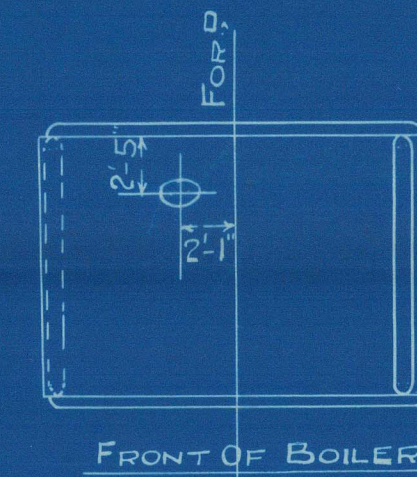
THREE OFF.

SCALE: 1" TO 1'-0"

CHECKED BY 10/8
DATE 10/8/1927
TIME CHARGED TO N° 1

STRENGTH OF JOINT

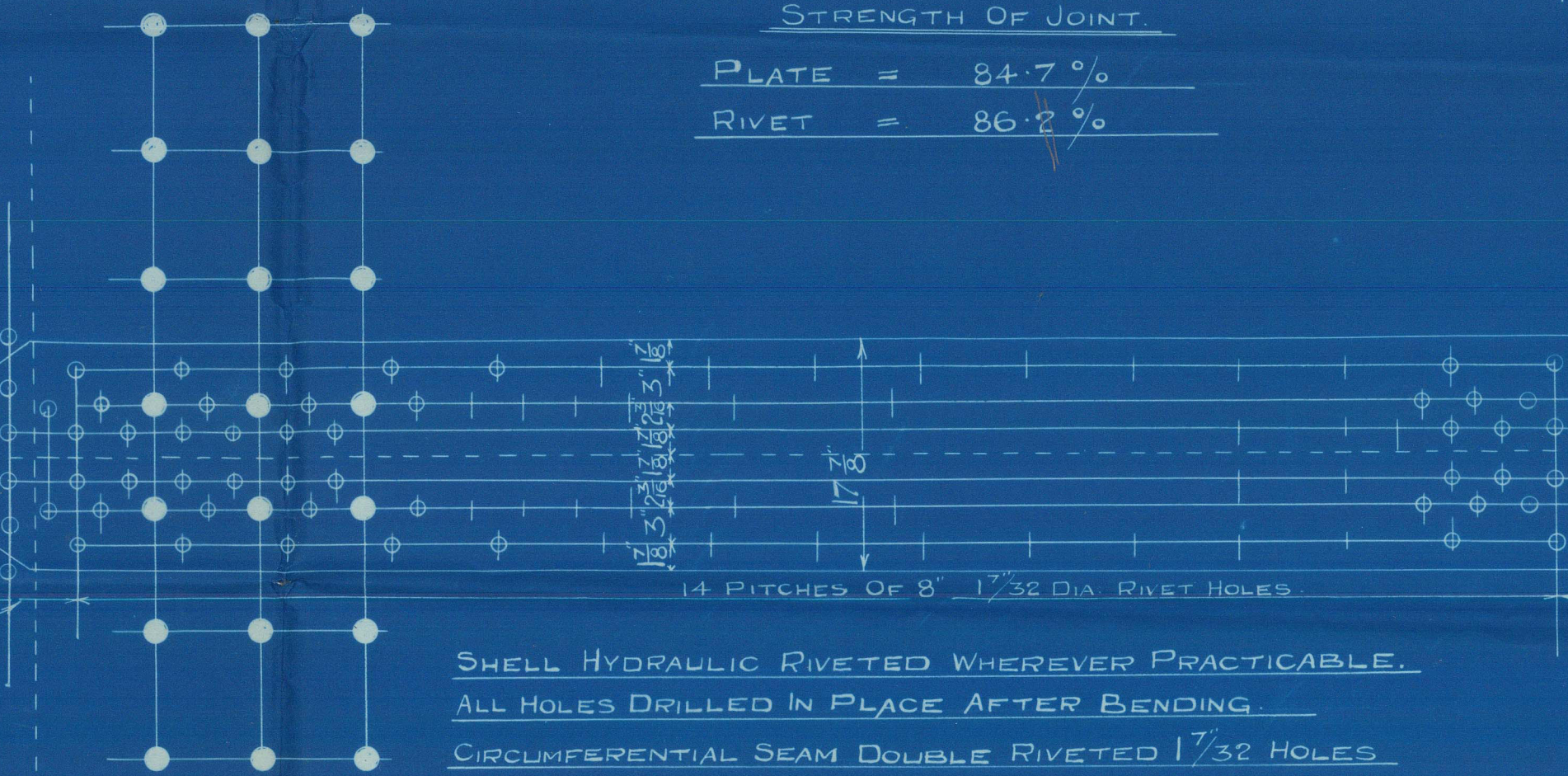
PLATE = 84.7 %
RIVET = 86.2 %



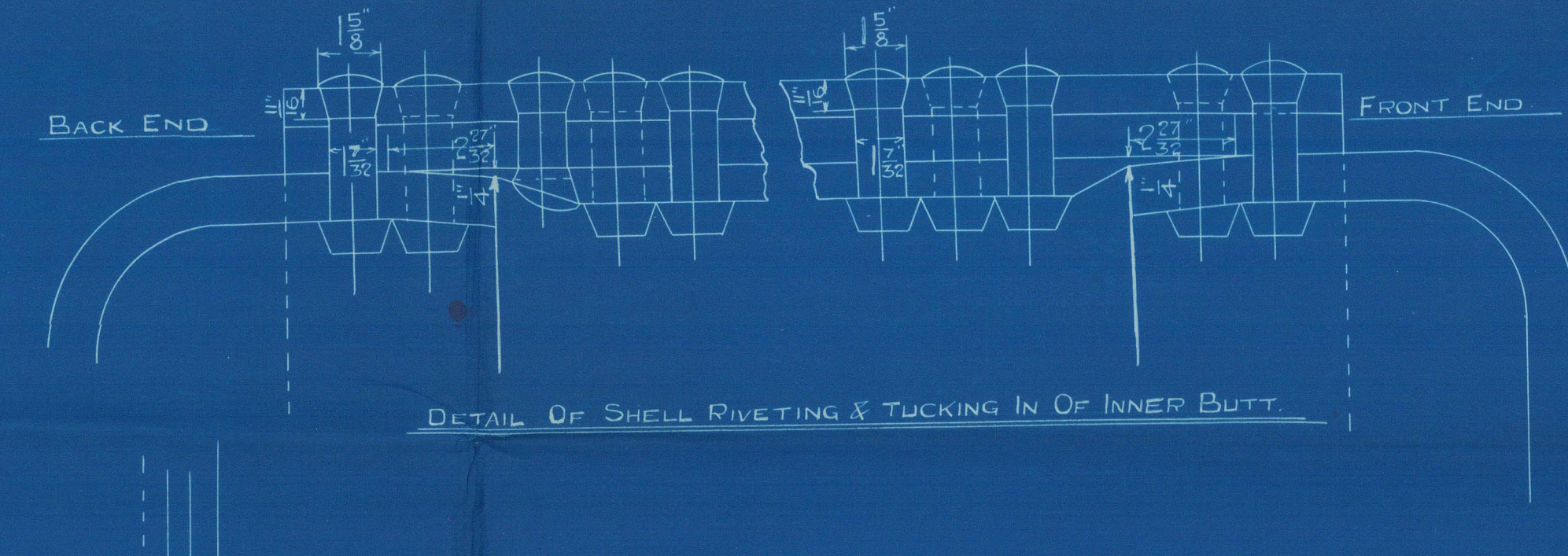
SPARE GEAR

50 PLAIN TUBES

8 7/8" FOR LOWER STRAP
9 7/8" FOR UPPER STRAP

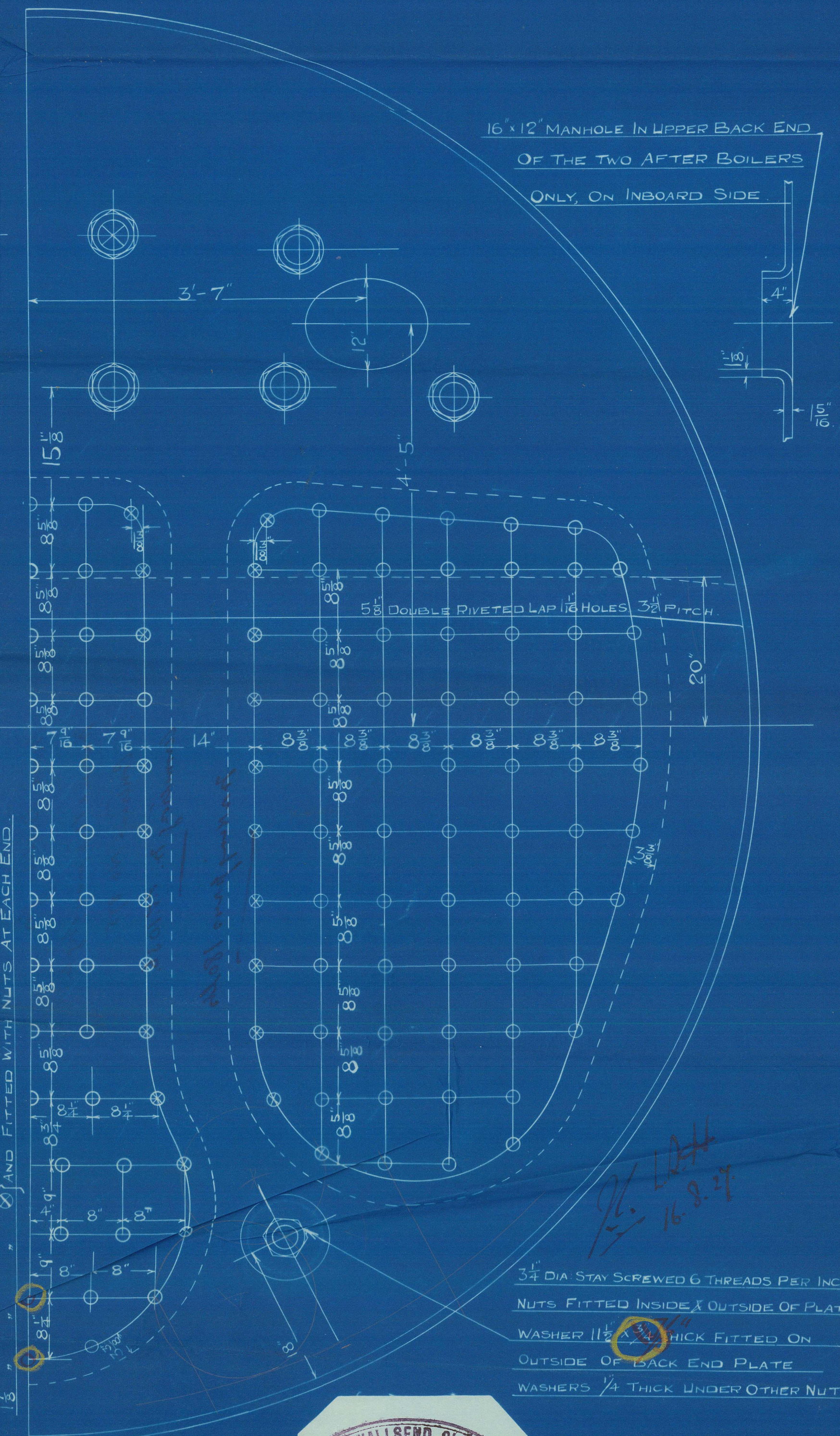
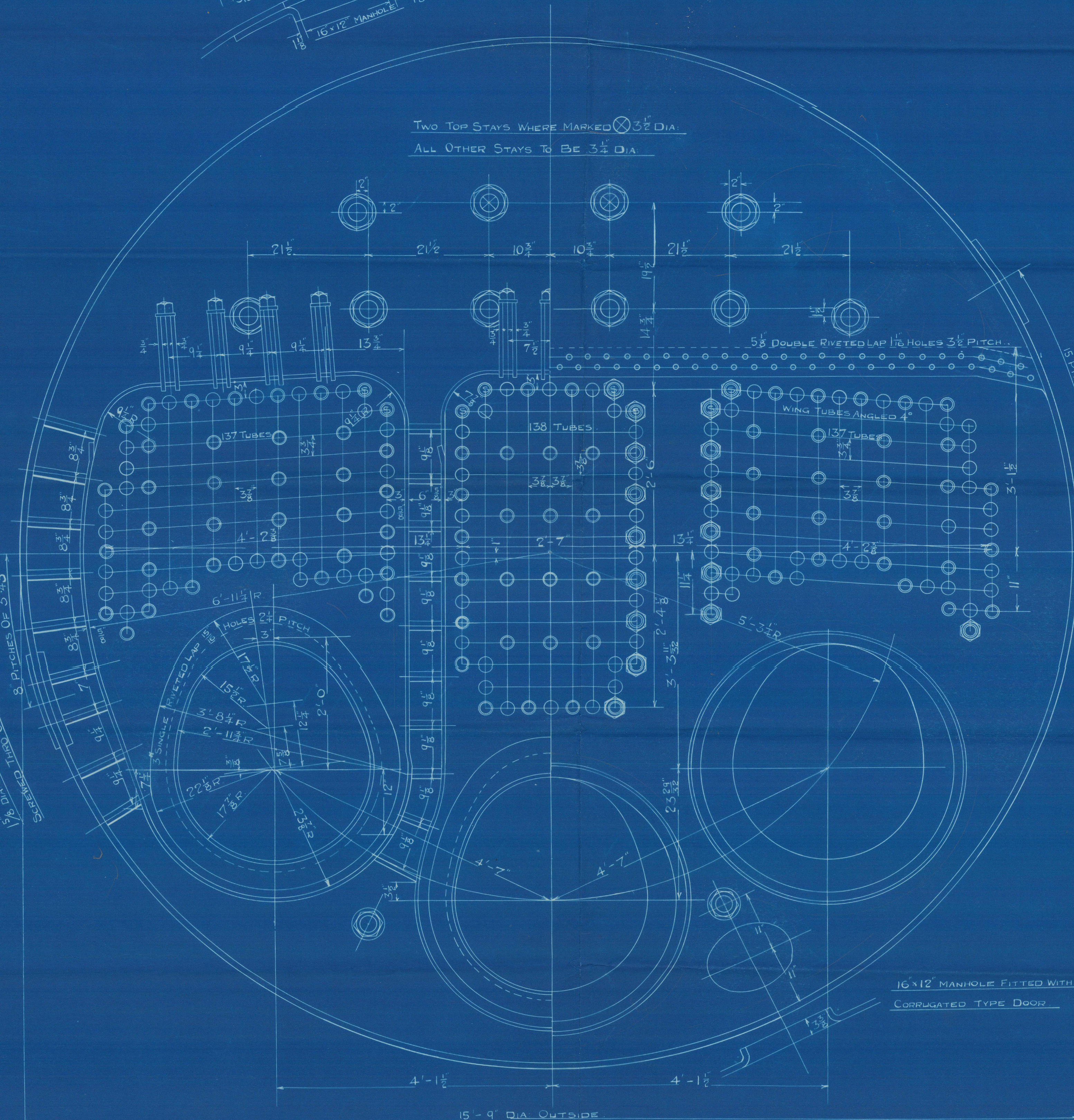


SHELL HYDRAULIC RIVETED WHEREVER PRACTICABLE.
ALL HOLES DRILLED IN PLACE AFTER BENDING.
CIRCUMFERENTIAL SEAM DOUBLE RIVETED 1 1/32 HOLES.
172 PITCHES OF 3 4/3 MEASURED ON MEAN CIRCUMFERENCE.
SHELLS TAKEN APART AFTER DRILLING, THE BURRS TAKEN OFF
AND HOLES SLIGHTLY COUNTERSUNK. NO DRIFTS TO BE USED.
ALL SEAMS FITTED METAL TO METAL AND HOLES FAIRED BEFORE RIVETING.



DESCRIPTION	MATERIAL	TENSILE STRENGTH
SHELL PLATES & BUTT STRAPS	STEEL	30 TO 34 TONS D'
C.C. GIRDER PLATES	"	28 TO 32 " "
WRAPPER & FLANGED PLATES	"	28 TO 30 " "
LONGITUDINAL STAYS	"	28 TO 32 " "
C.C. SCREWED STAYS & RIVET BARS	"	26 TO 30 " "
TUBES	IRON	

TWO TOP STAYS WHERE MARKED X 3/2" DIA.
ALL OTHER STAYS TO BE 3 1/2" DIA.



Main Boiler for
Holland Shipways & Dry Dock Co.
Contract No 845
Armstrong & Co. L.T. 1036.

Making press 180 lbs



S.S. "Caspia."
NEWCASTLE ON TYNE.
Report No. 83200.



© 2021

Lloyd's Register
Foundation

W125-0018