

# BOILERS N<sup>o</sup> 1072 1073.

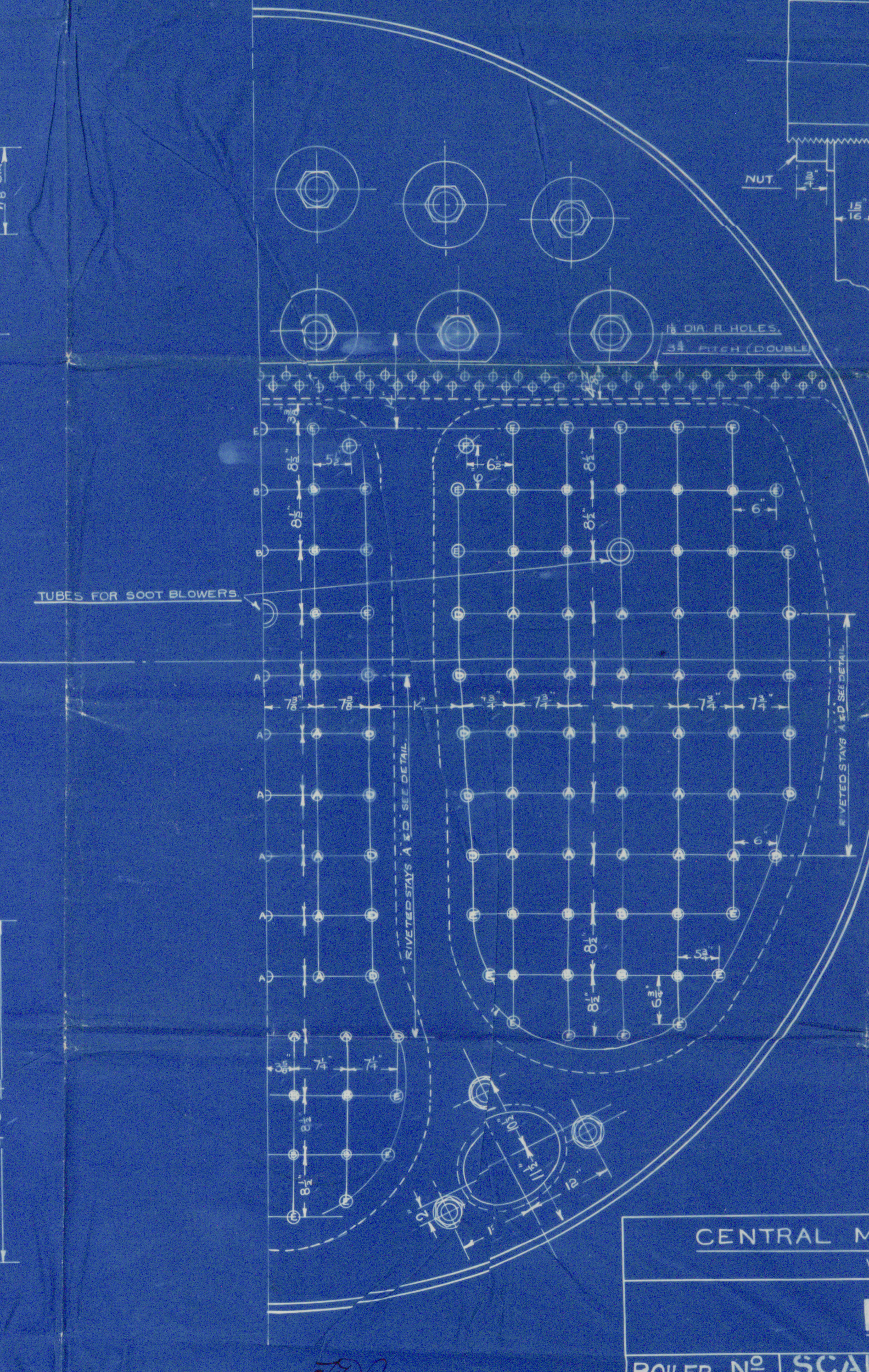
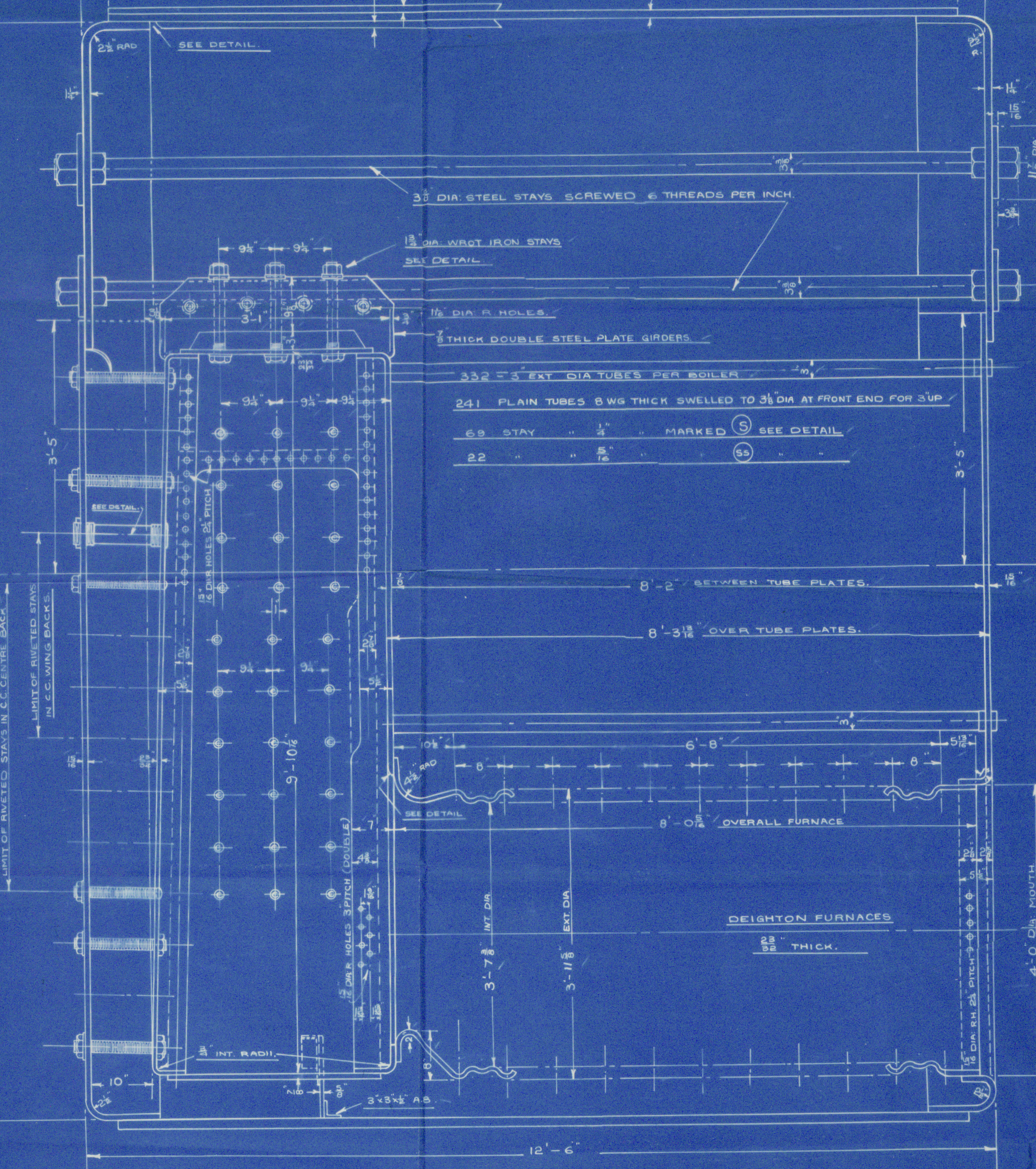
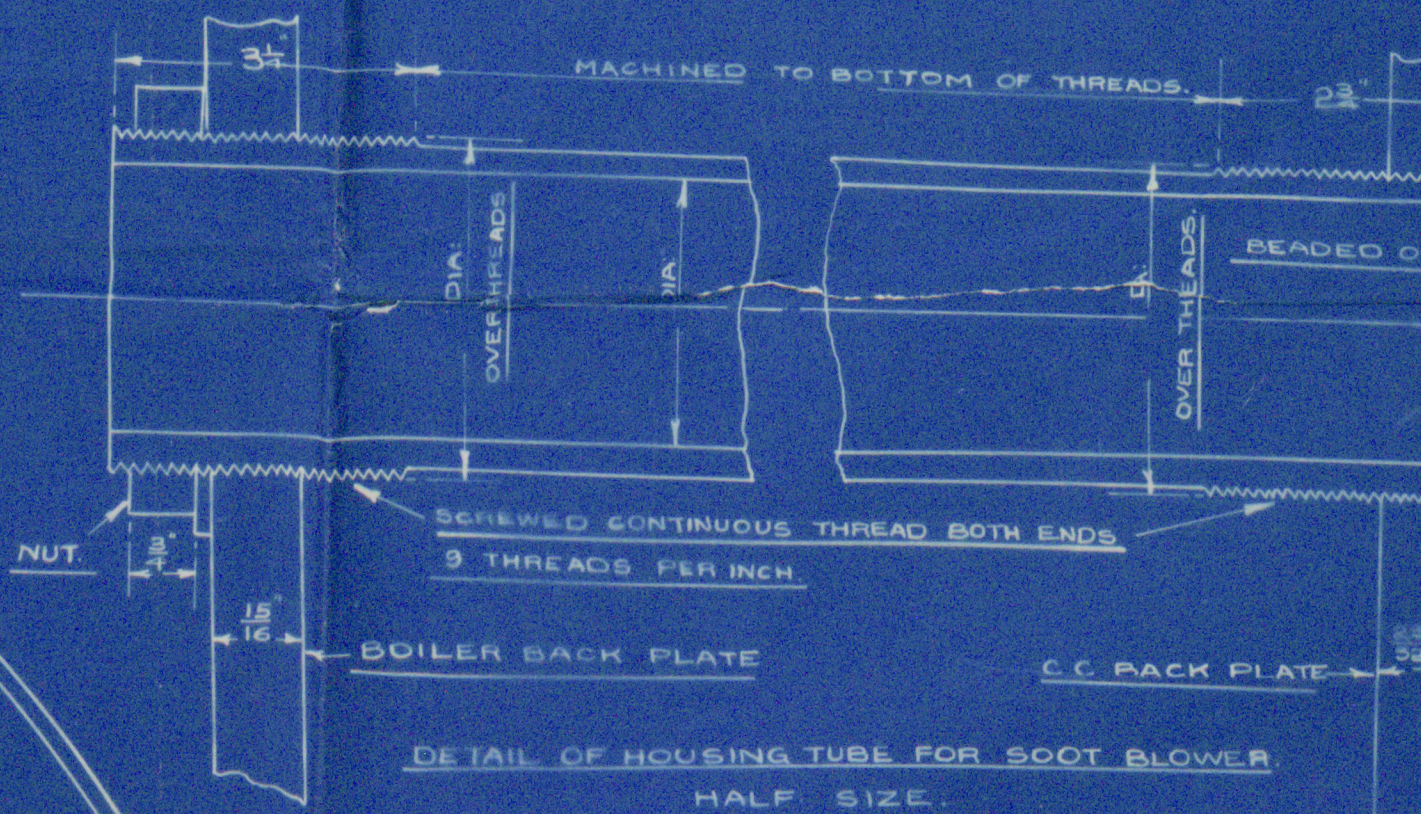
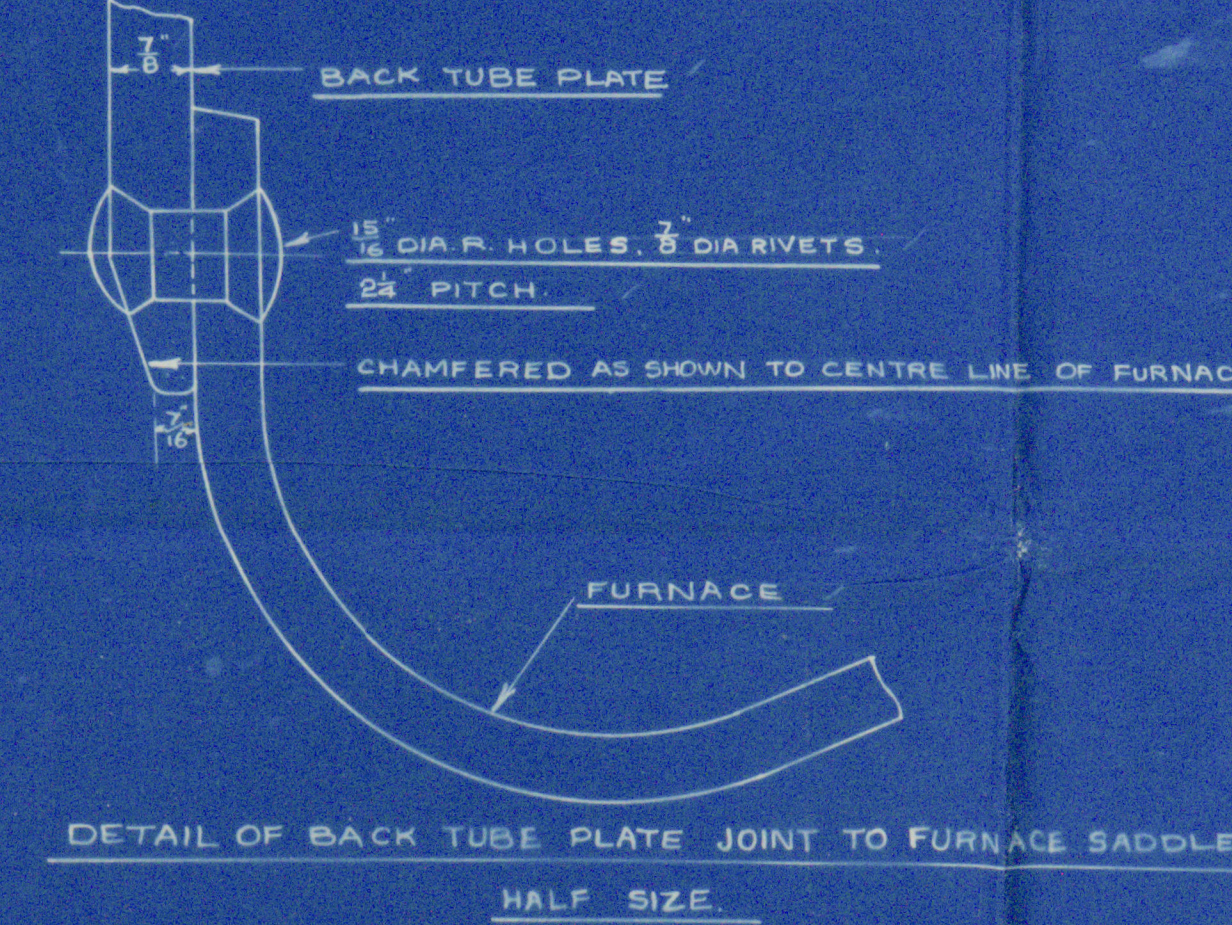
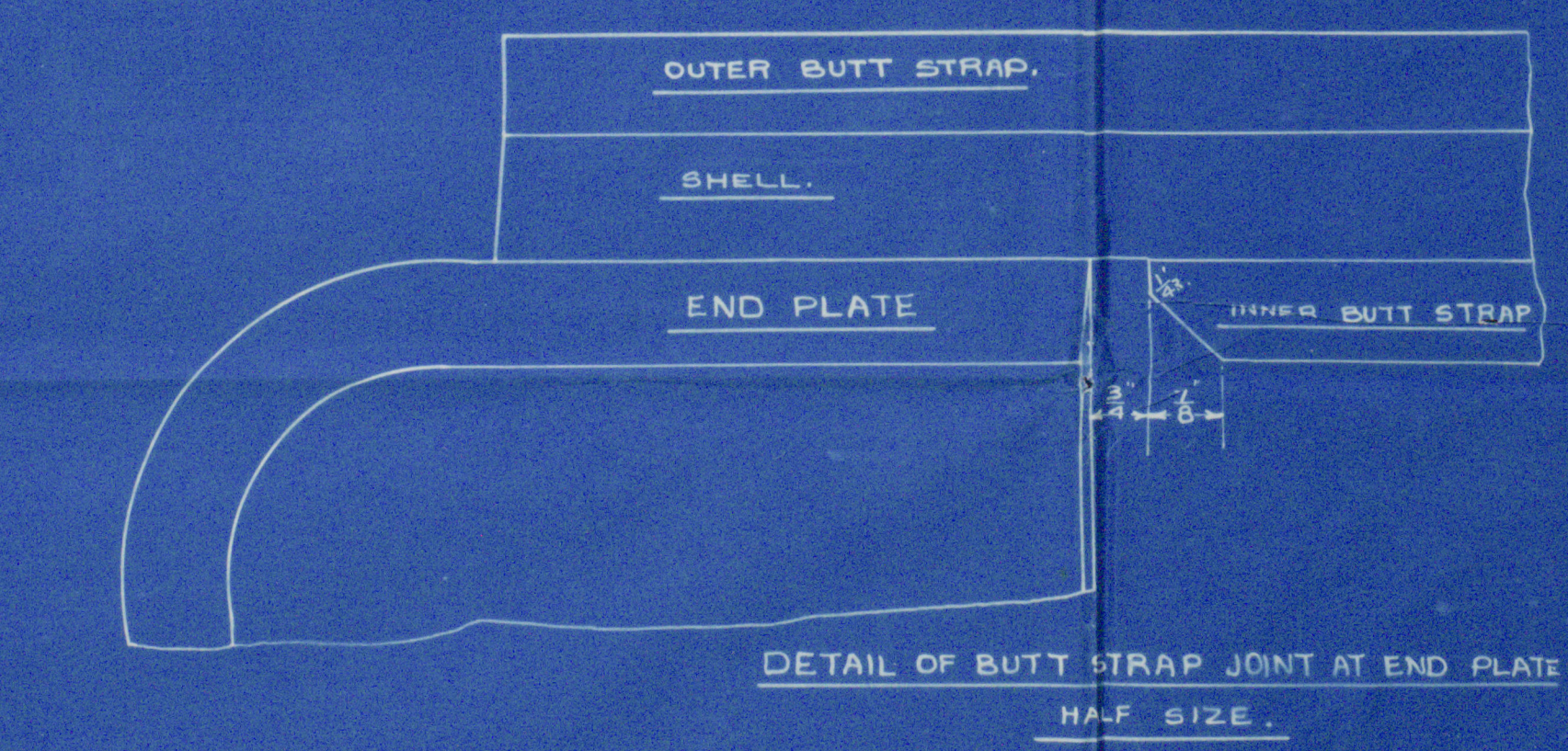
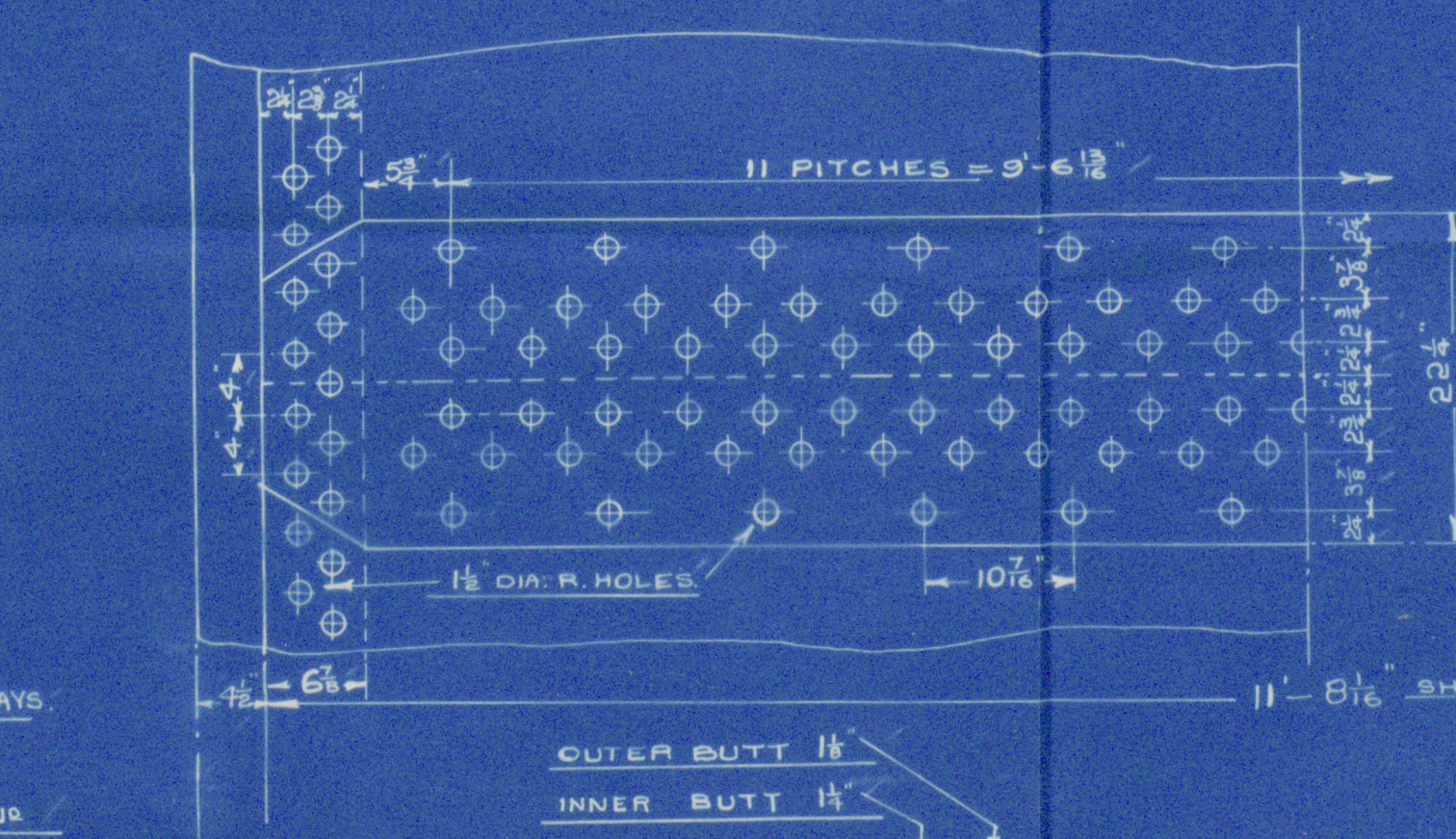
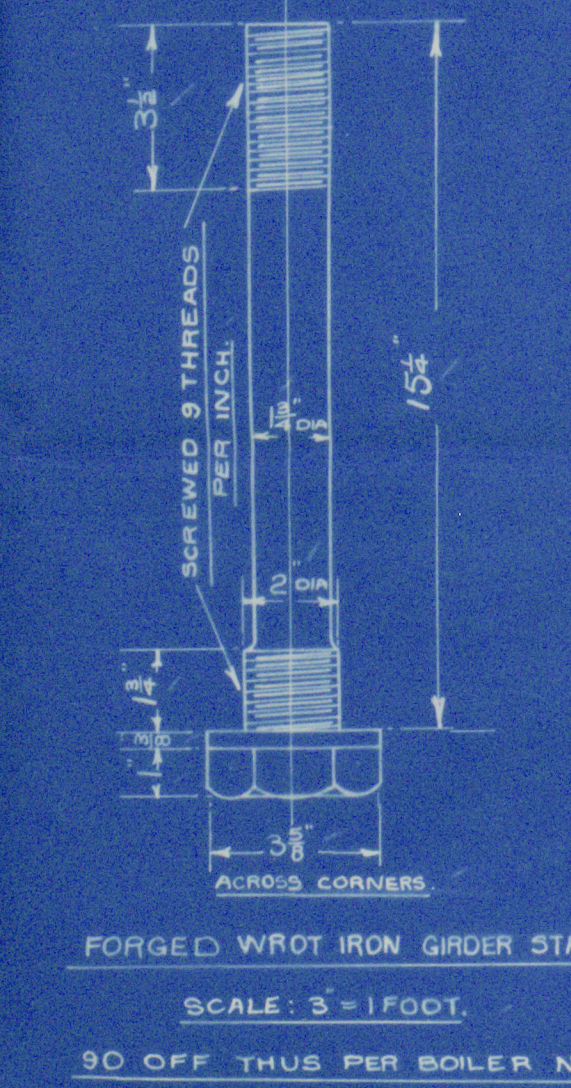
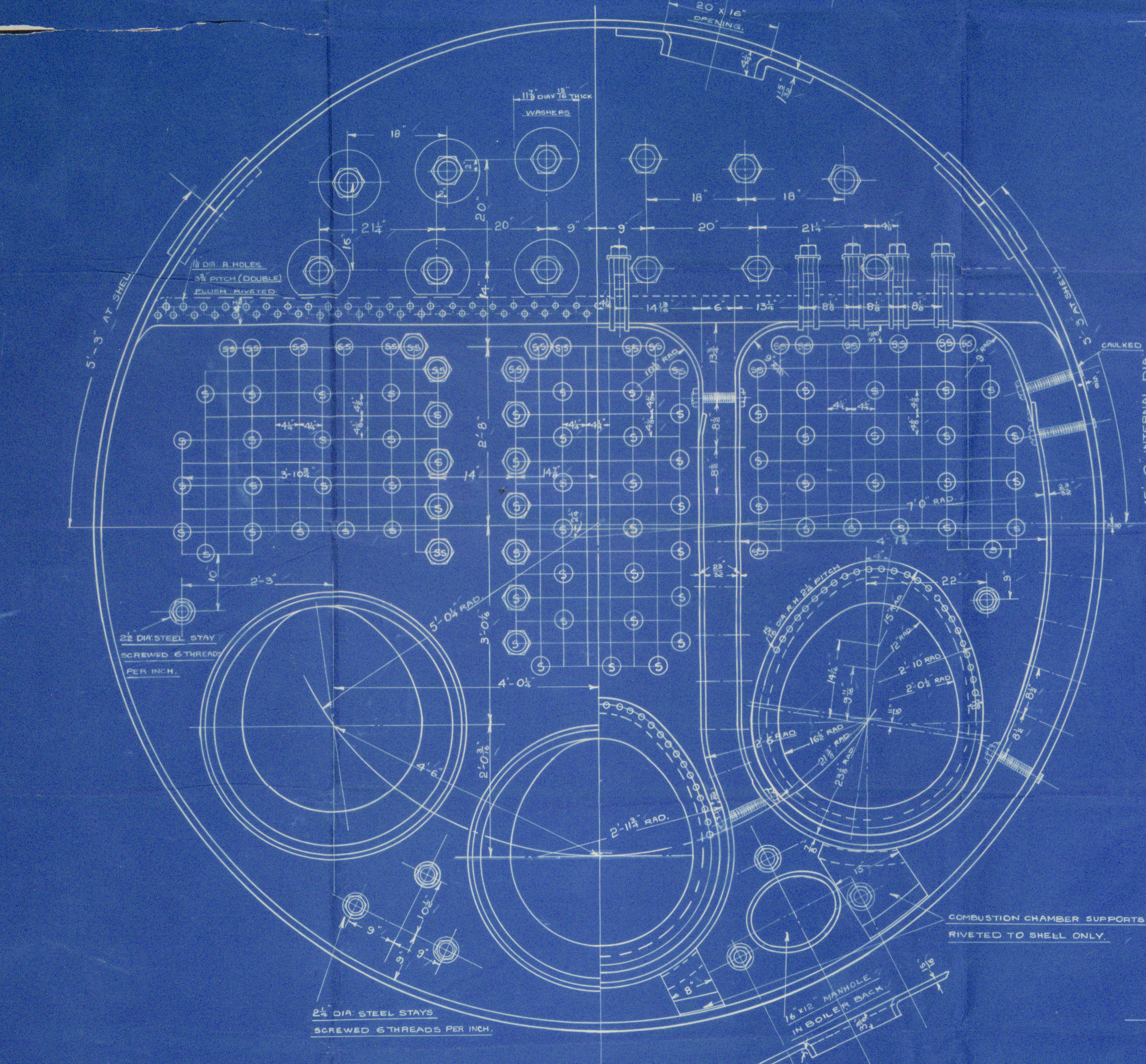
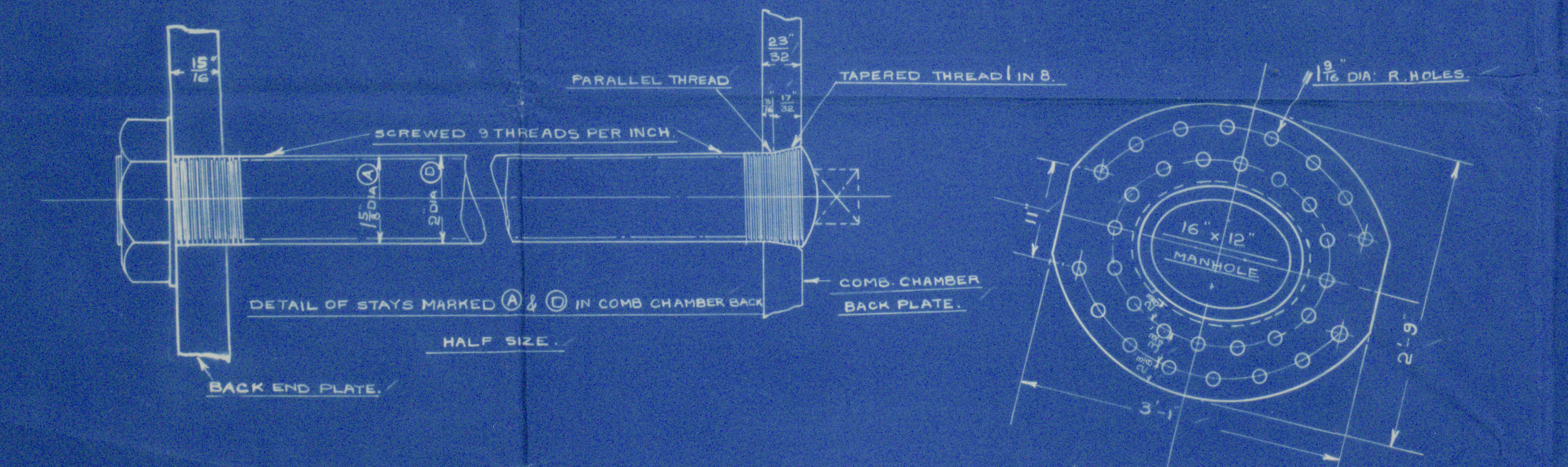
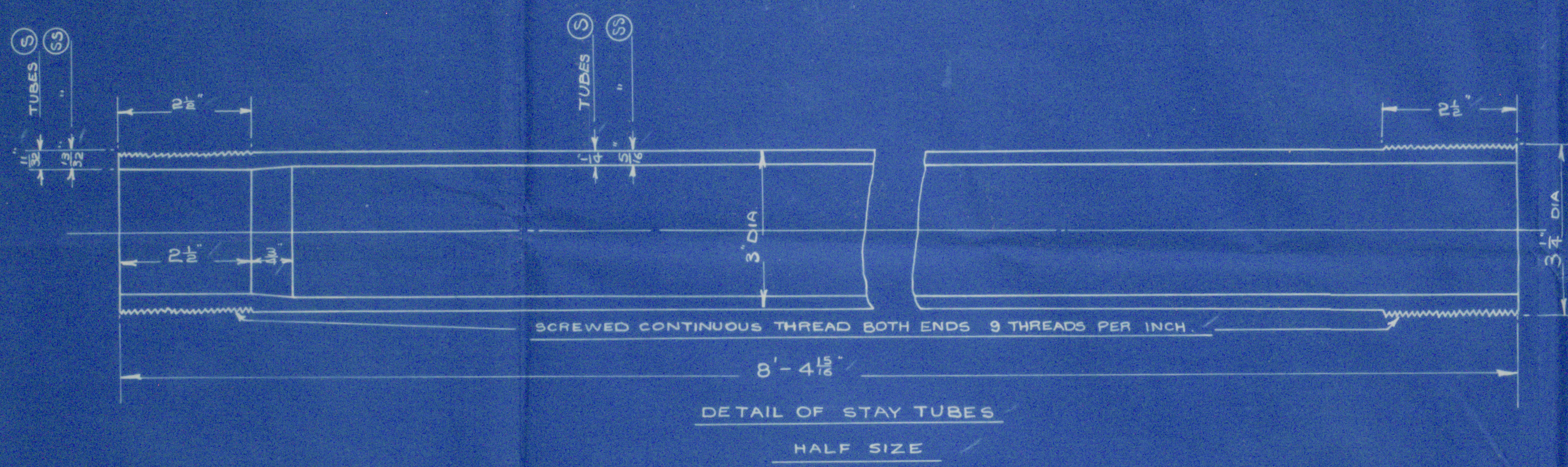
WORKING PRESSURE 225 LBS/SQ IN  
WATER TEST " 388 LBS/SQ IN

3 OFF THIS PER BOILER N<sup>o</sup> 2 TO LLOYD'S SURVEY  
SCALE 1" = 1 FOOT.  
TO BE FITTED WITH HOWDENS SYSTEM OF FORCED DRAUGHT.

LIMIT OF TENSILES.		
SHELL AND BUTT STRAPS	29-32 TONS/SQ IN	SHEMENS-MARTIN STEEL
GIRDER PLATES	28-32 " "	" " "
ALL OTHER PLATES	26-30 " "	" " "
LONGITUDINAL STAYS	28-32 " "	" " "
SCREWED STAYS	26-30 " "	" " "
RIVET BARS	26-30 " "	" " "
FORGED GIRDER STAYS	2 1/2 TONS/SQ IN	WROT IRON
TUBES	" "	LAP-WELDED WROT IRON.

BOILER PARTICULARS		18000	30000
HEATING SURFACE OF TUBES		2129	6387
" " " FURNACES		173	519
" " " COMB CHAMBERS		245	735
" " " BACK TUBE PLATES		43	129
" " " TOTAL		2590	7770
GRATE SURFACE (5'-0" BARS)		555	1665
RATIO		11.5	46.7

SCREWED STAYS					REMARKS
MARK	DIA	THREAD	EFF. AREA		
Q	1 1/8	9	1.730		NUTTED AT OUTSIDE RIVETED OVER INSIDE
Q	1 1/8	9	1.730		NUTTED AT BOTH ENDS
Q	1 1/2	9	2.030		NUTTED AT BOTH ENDS RIVETED AT THE SHELL
Q	2	9	2.710		NUTTED AT OUTSIDE RIVETED OVER INSIDE
Q	2	9	2.710		NUTTED AT BOTH ENDS
Q	2 1/2	9	3.490		NUTTED AT BOTH ENDS



CENTRAL MARINE ENGINE WORKS.  
WEST HARTLEPOOL.  
**BOILERS.**  
BOILER N<sup>o</sup> 1072 1073.  
SCALE 1" = 1 FOOT.  
SURVEY LLOYD'S.  
DRAWING N<sup>o</sup> 49010.

10/9/30



RETAIN

C.M.E.W.

1072/1073

Boulders

Wm  
Gray

"Belgranian"

Hpl rept No. 17734.

W1124-0055



© 2021

Lloyd's Register  
Foundation