

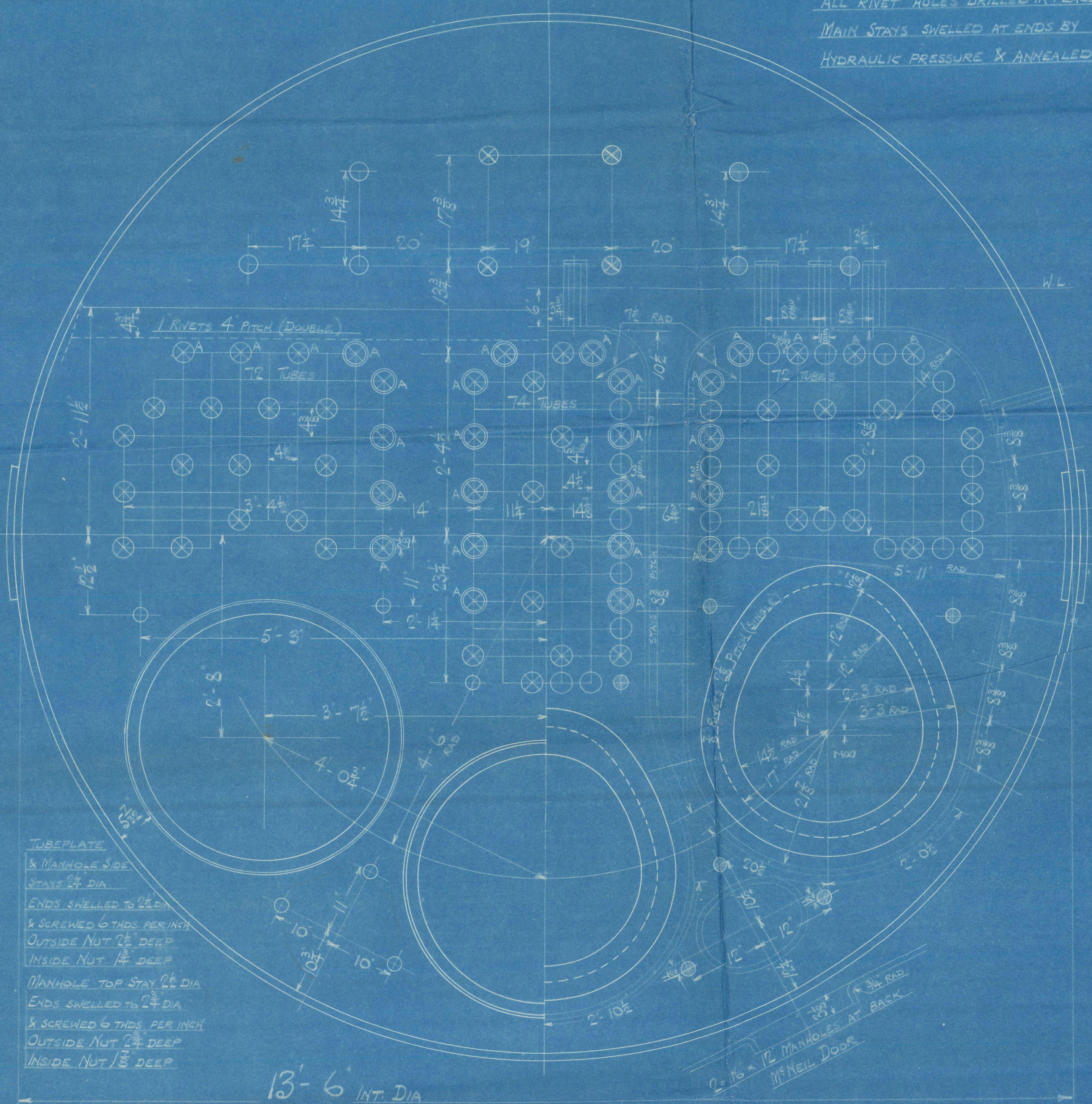
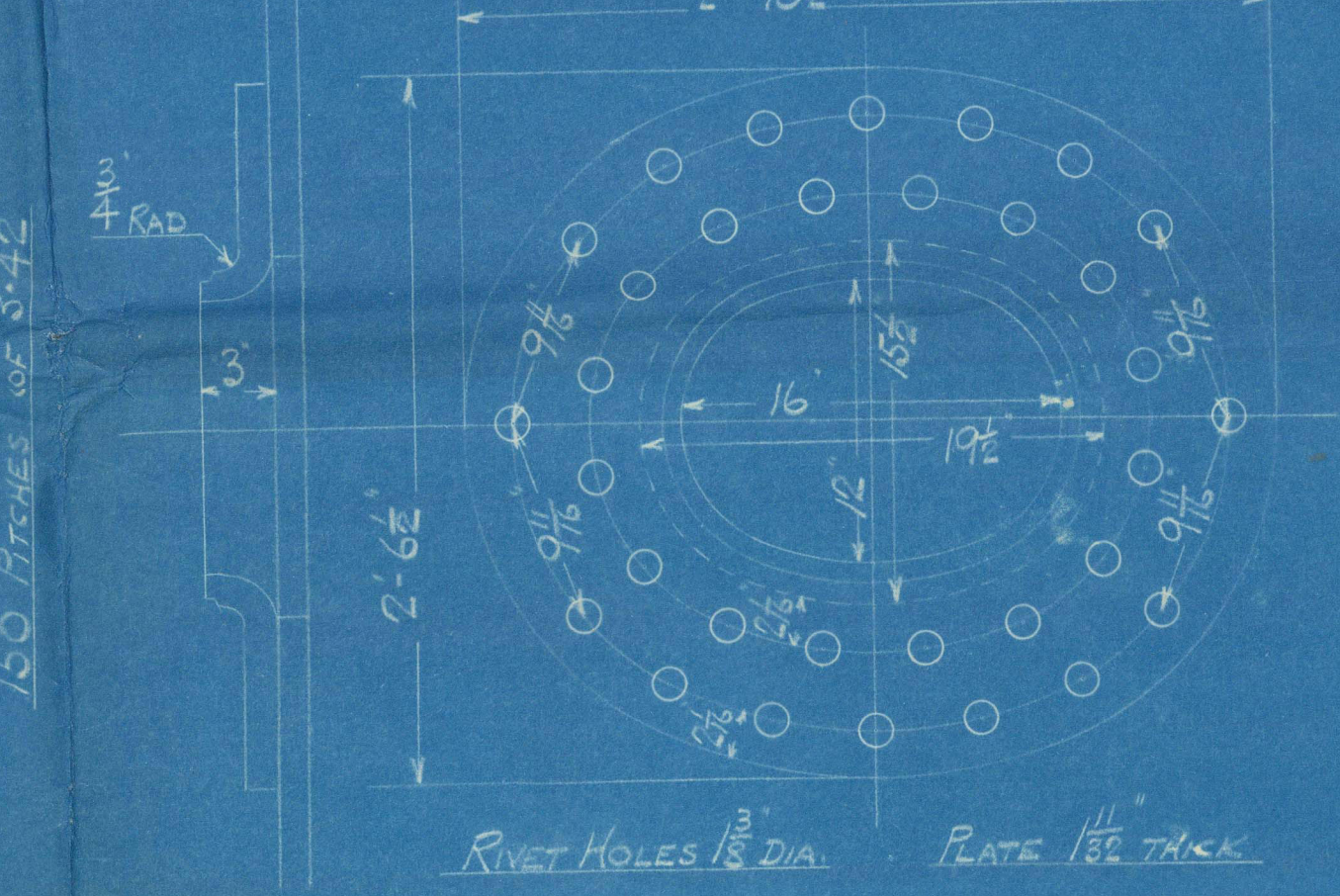
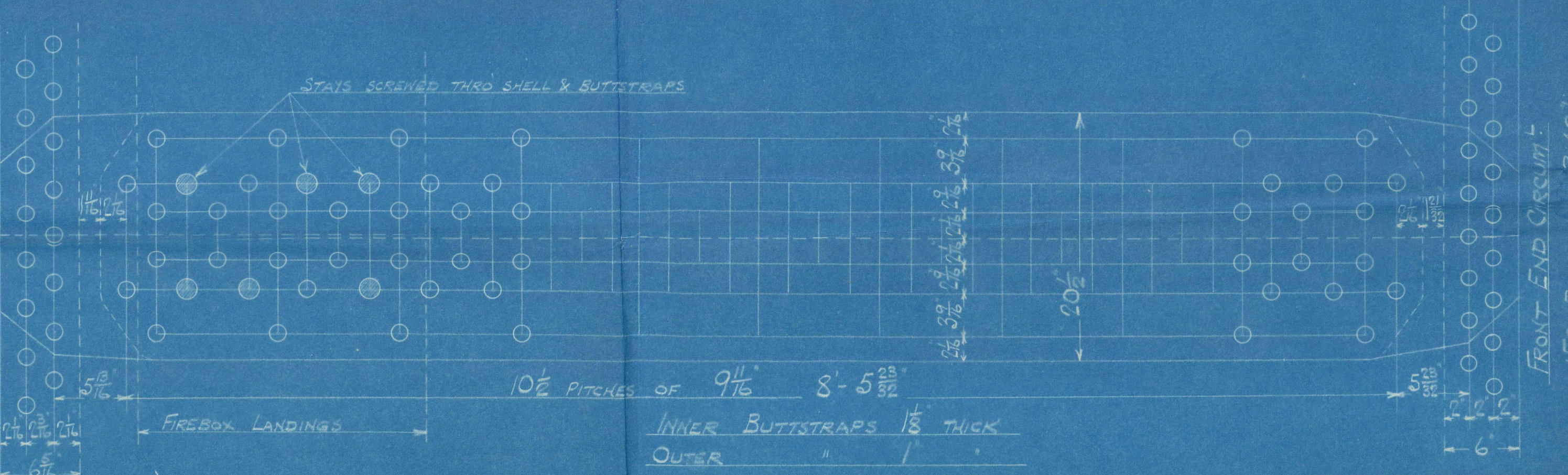
as fitted

SURFACES		ONE BOILER
TUBES		1345 #
FIREBOX TOP AND SIDES		123
" BACK		61
" TUBEPLATE		40
FURNACES		131
TOTAL HEATING SURFACE		1700
GRATE AREA (8-6 BARS)		538
TUBE AREA		9.37
WATER AREA		130
STEAM SPACE		330
GRATE AREA : HEATING SURFACE		1:31.7
" : TUBE		1:25.1
" : WATER		576:1
" : STEAM SPACE		1:4.42
% BOILER ABOVE FIREBOX		29.7
WEIGHT OF WATER		20 TONS

RIVETING			
	LONGIT	BACK END	FRONT END
RIVET HOLE DIA	11/16	11/16	11/16
PITCH	9 1/16	8 3/8	8 1/2
% PLATE	85.8	64.1	61.6
% RIVET	87.4	47.5	48.4
% COMBINED	89		

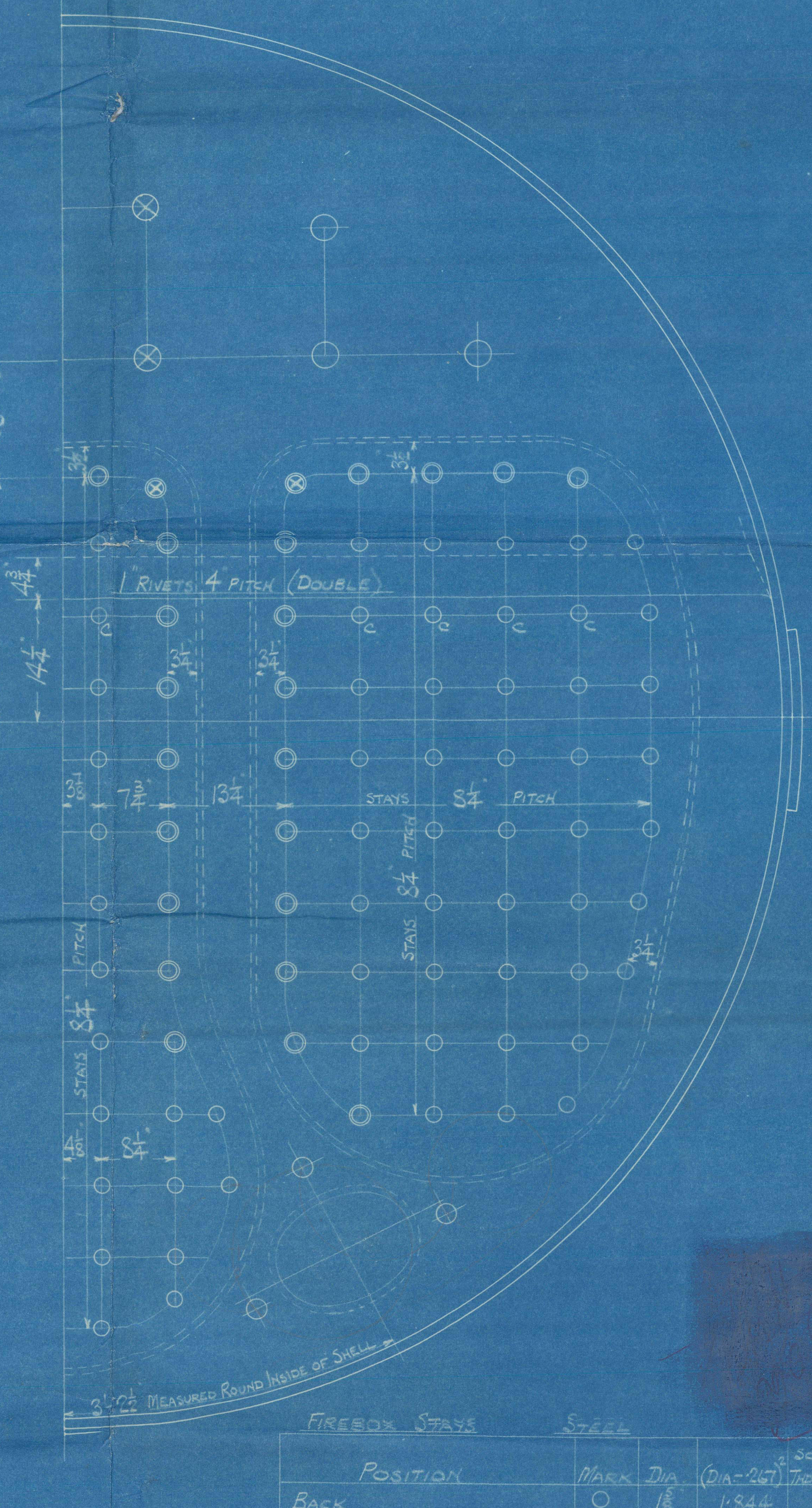
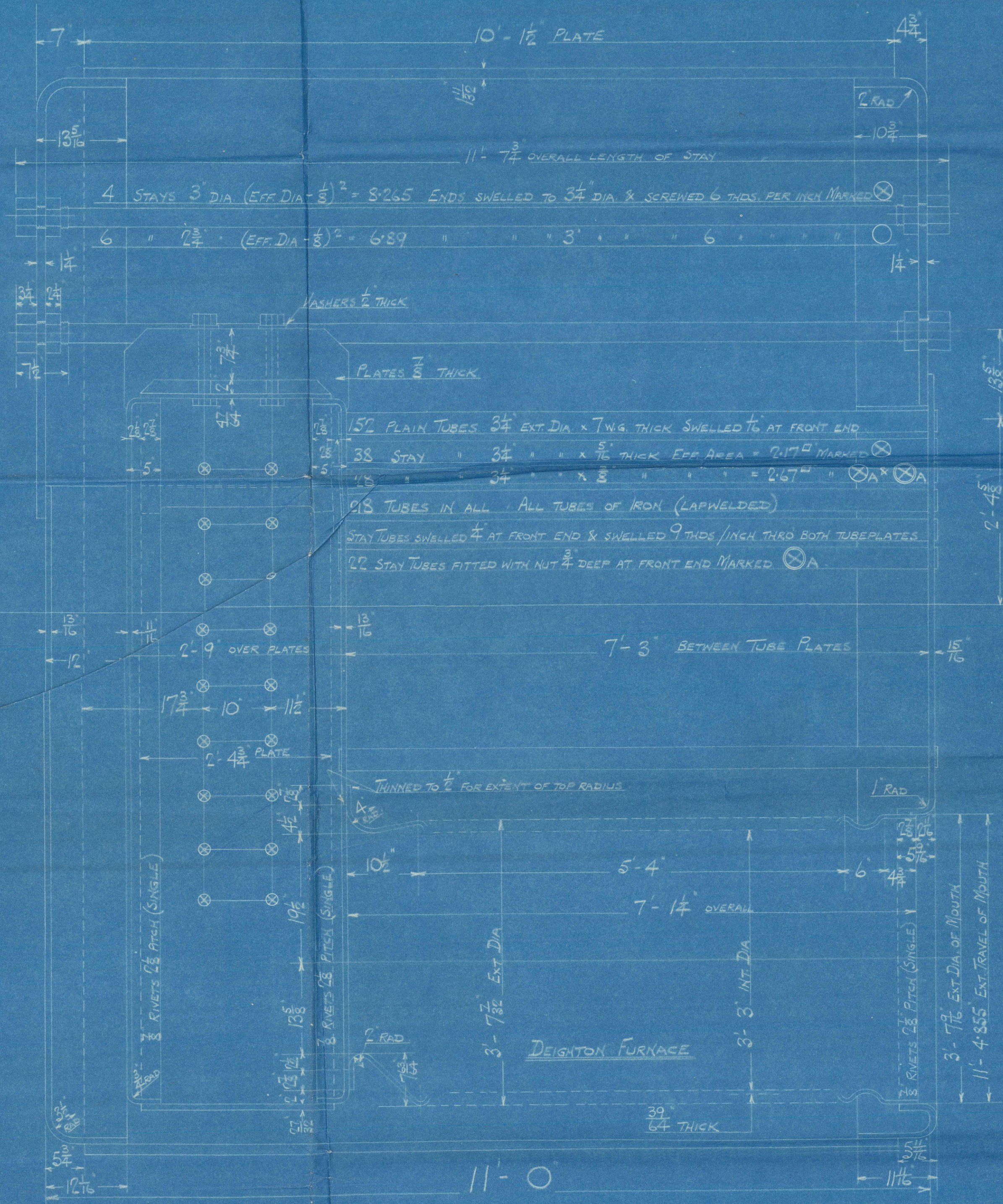
LIMITS OF TENSILE STRENGTH & MATERIAL			
SHELL, BUTTSTRAPS AND GIRDERS	28 TO 30 TONS		
OTHER PLATES	26 " 30 "		
FURNACES	26 " 30 "		SIEMENS-MARTIN STEEL
MAIN STAYS	28 " 30 "		
SCREWED STAYS	26 " 30 "		
RIVET BARS	16 " 20 "		

BACK END CIRCUM 134 PITCHES OF 3.83"



TUBEPLATE & MANHOLE SIDE STAYS 1/2" DIA
ENDS SHELLED TO 1/2" DIA
& SCREWED 5 THDS PER INCH
OUTSIDE NUT 1/2" DEEP
INSIDE NUT 1/2" DEEP
MANHOLE TOP STAY 1/2" DIA
ENDS SHELLED TO 1/2" DIA
& SCREWED 5 THDS PER INCH
OUTSIDE NUT 1/2" DEEP
INSIDE NUT 1/2" DEEP

ALL RIVET HOLES DRILLED IN PLACE
MAIN STAYS SHELLED AT ENDS BY
HYDRAULIC PRESSURE & ANNEALED



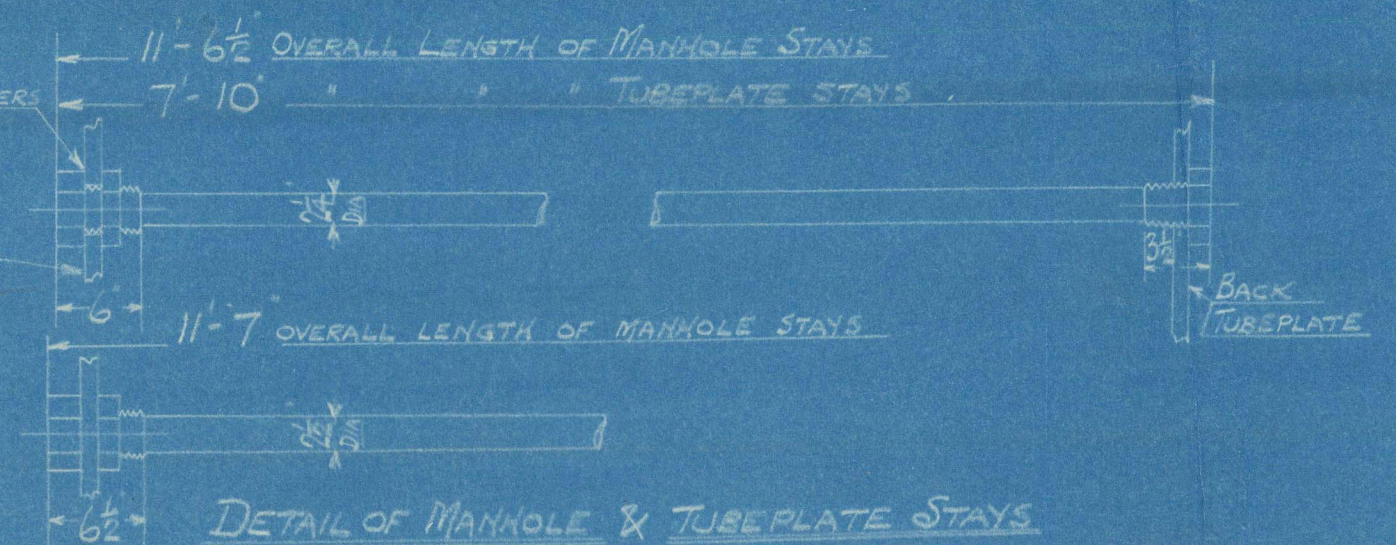
AUXILIARY BOILER ONE OFF CONT. NO 848

WORKING PRESSURE 220 LBS. PER SQUARE INCH
TEST " 380 " " "
TO PASS LLOYDS SURVEY
SCALE 1" = 1/2" ONE FOOT

FIREBOX STAYS		STEEL	
POSITION	MARK	DIA	SCREWED (DIA-26) THDS/INCH
BACK	○	1 1/8	1-844
TOP & SIDES	⊗	1 1/8	2-194
BACK WIDE SPACE & TOP ROW	⊗	1 1/8	2-585
" TOP CORNER	⊗	1 1/8	3-932

ALL FIREBOX STAYS SCREWED THRO BOTH PLATES AND NOT FITTED AT EACH END EXCEPT STAYS FROM WING FIREBOX TO SHELL AND STAYS MARKED C IN BACK BOTTOM END WHICH PROJECT 3" AND ARE CHALKED
ALL 1 1/8" NUTS 1/2" DEEP EXCEPT ON GIRDER TOPS WHERE THE OUTSIDE NUTS ARE 1 1/2" DEEP
ALL 1 1/8" NUTS 1" DEEP & 3/4" NUTS 1/2" DEEP

O.T 3/882A



From DAVID ROWAN & CO., GLASGOW
ENCLOSURE
FOR MESSRS.
Lloyd's

SURFACES	ONE BOILER
TUBES	1345 #
FIREBOX TOP AND SIDES	123 "
" BACK	61 "
" TUBEPLATE	40 "
FURNACES	131 "
TOTAL HEATING SURFACE	1700 #
GRATE AREA (6-6 BARS)	538 "
TUBE AREA	9.37 "
WATER AREA	130 "
STEAM SPACE	33.0 #
GRATE AREA : HEATING SURFACE	1 : 31.7
" : TUBE	1 : 25.1
" : WATER	5.72 :
" : STEAM SPACE	1 : 2.42
% BOILER ABOVE FIREBOX	29.7
WEIGHT OF WATER	20 TONS

-- RIVETING --

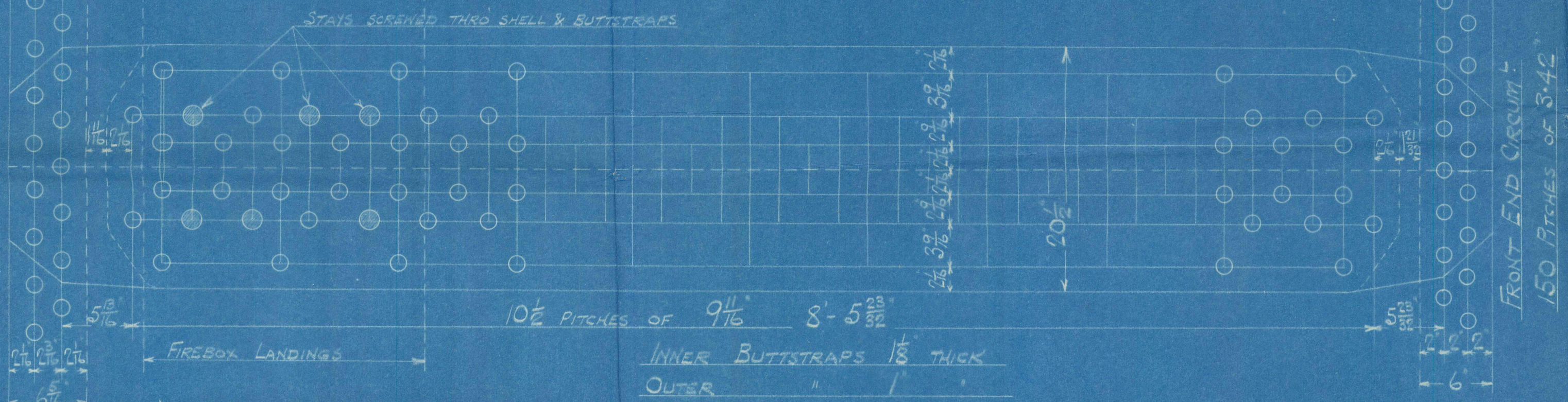
	LONG	BACK END CIRC	FRONT END CIRC
RIVET HOLE DIA	18	18	18
PITCH	9 1/2	3.83	3.42
% PLATE	85.8	64.1	61.6
% RIVET	87.4	47.5	48.4
% COMBINED	89.		

LIMITS OF TENSILE STRENGTH & MATERIAL

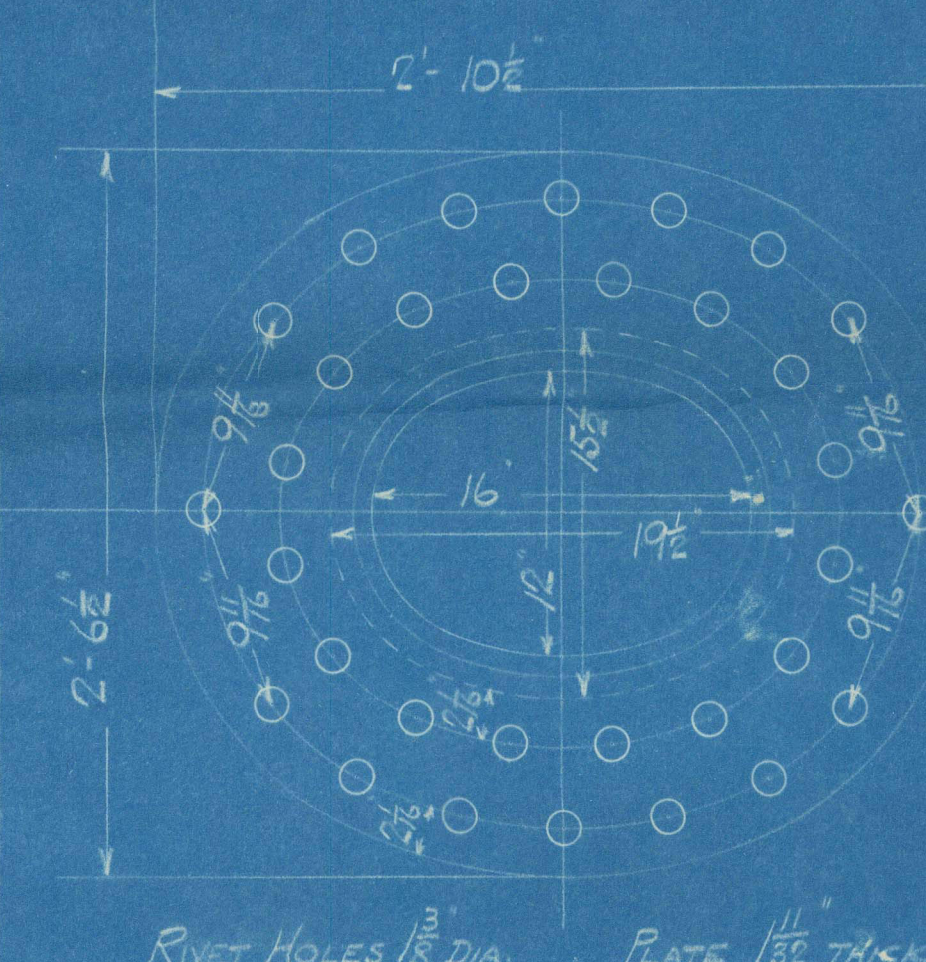
SHELL, BUTTSTRAPS AND GIRDERS	28 TO 32 TONS	
OTHER PLATES	26 " 30 "	
FURNACES	26 " 30 "	
MAIN STAYS	28 " 30 "	
SCREWED STAYS	26 " 30 "	
RIVET BARS	26 " 30 "	

SIEMENS-MARTIN STEEL

BACK END CIRCUM 134
PITCHES OF 3.42

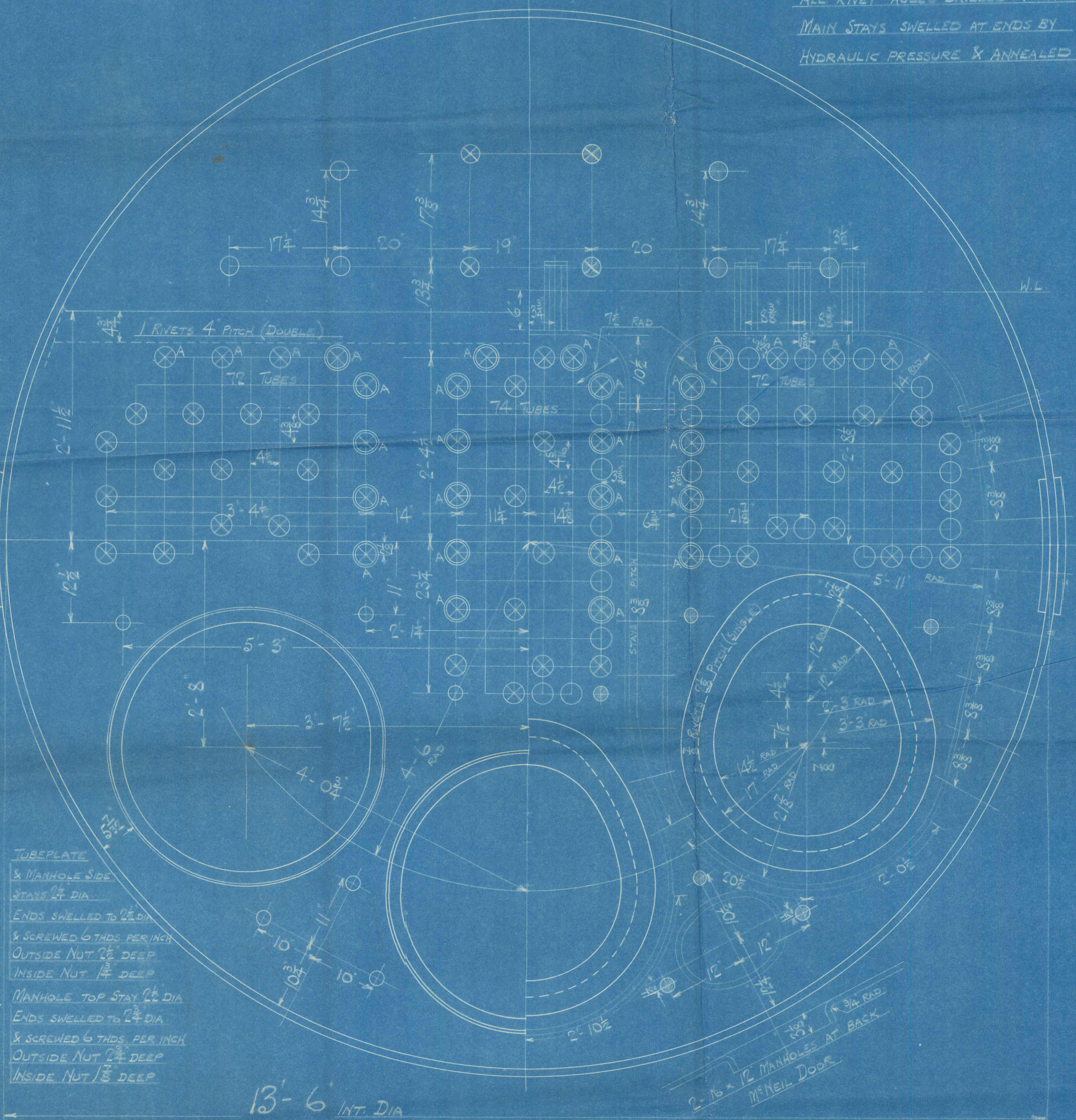
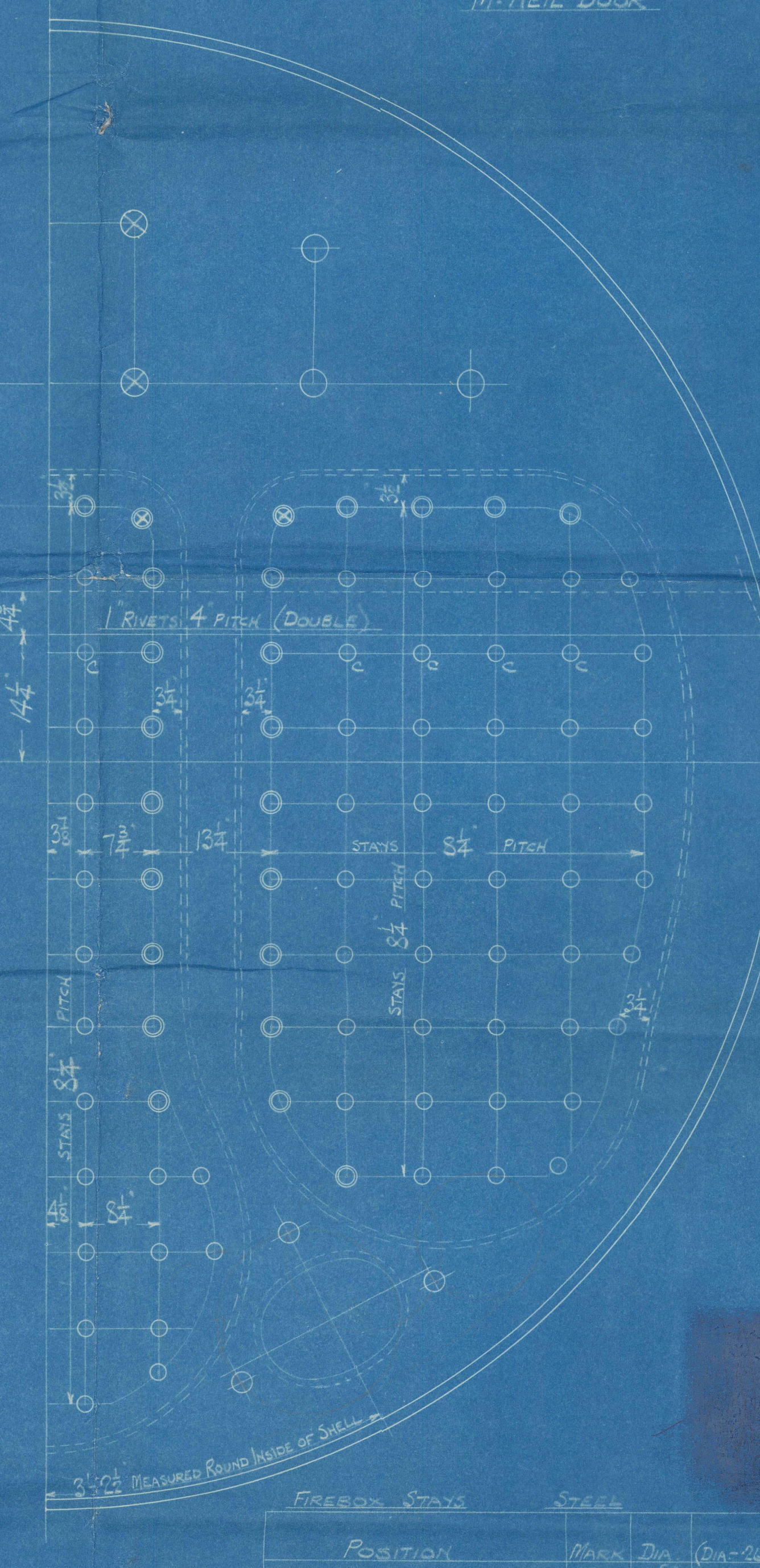
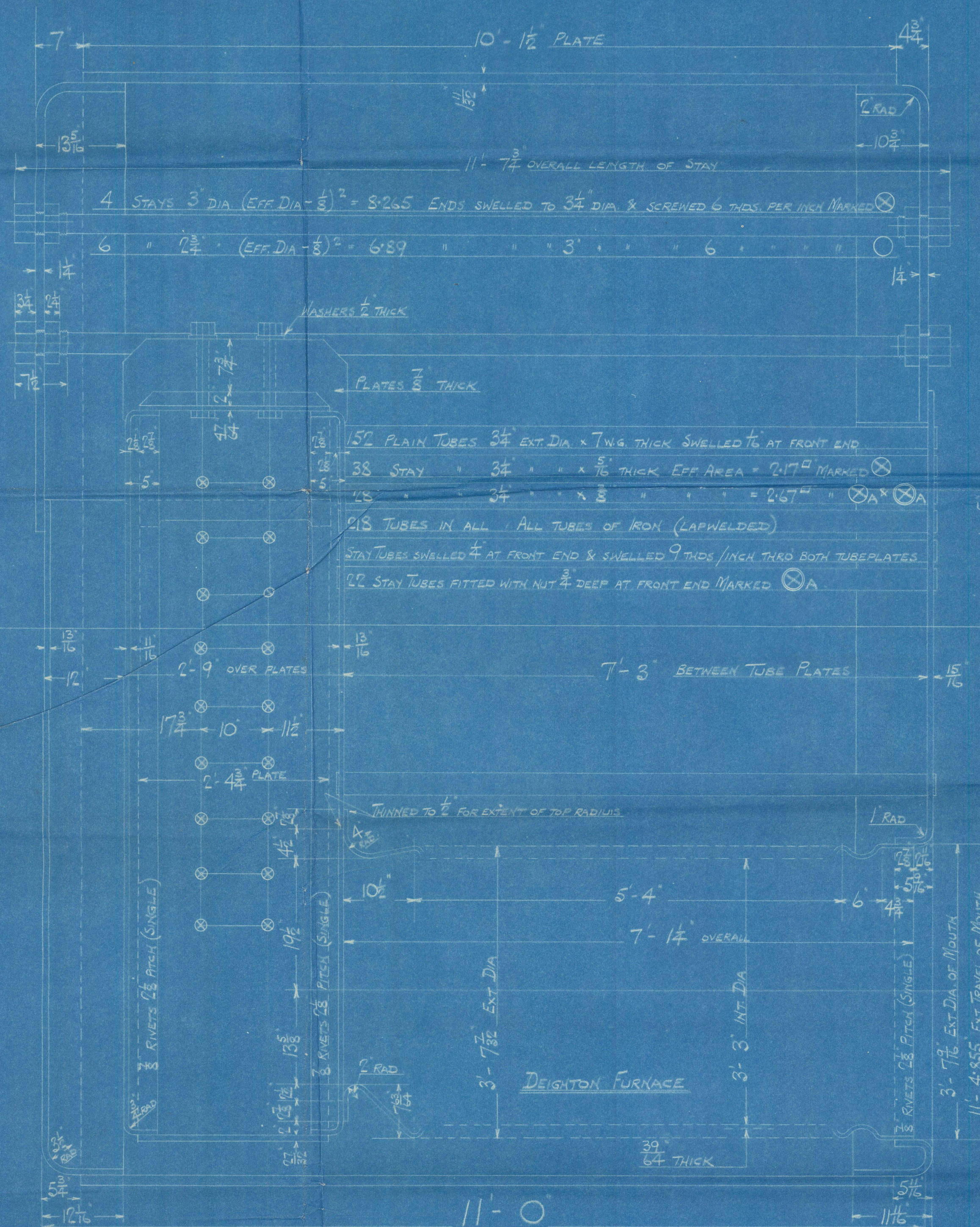


FRONT END CIRCUM 150
PITCHES OF 3.42



RIVET HOLES 1 1/2" DIA. PLATE 1/8" THICK
SHELL MANHOLE COMPENSATING RING
MCNEIL DOOR

ALL RIVET HOLES DRILLED IN PLACE
MAIN STAYS SWELED AT ENDS BY
HYDRAULIC PRESSURE & ANNEALED.



TUBEPLATE & MANHOLE SIDE
STAYS 3/4" DIA
ENDS SWELED TO 1/2" DIA
& SCREWED 6 THDS PER INCH
OUTSIDE NUT 3/8" DEEP
INSIDE NUT 1/2" DEEP
MANHOLE TOP STAY 1/2" DIA
ENDS SWELED TO 1/2" DIA
& SCREWED 6 THDS PER INCH
OUTSIDE NUT 3/8" DEEP
INSIDE NUT 1/2" DEEP

13'-6 INT. DIA

2'-10 x 1/2 MANHOLES AT BACK
MCNEIL DOOR

AUXILIARY BOILER

ONE OFF
CONT. N° 848

WORKING PRESSURE 220 LBS. PER SQUARE INCH

TEST 380

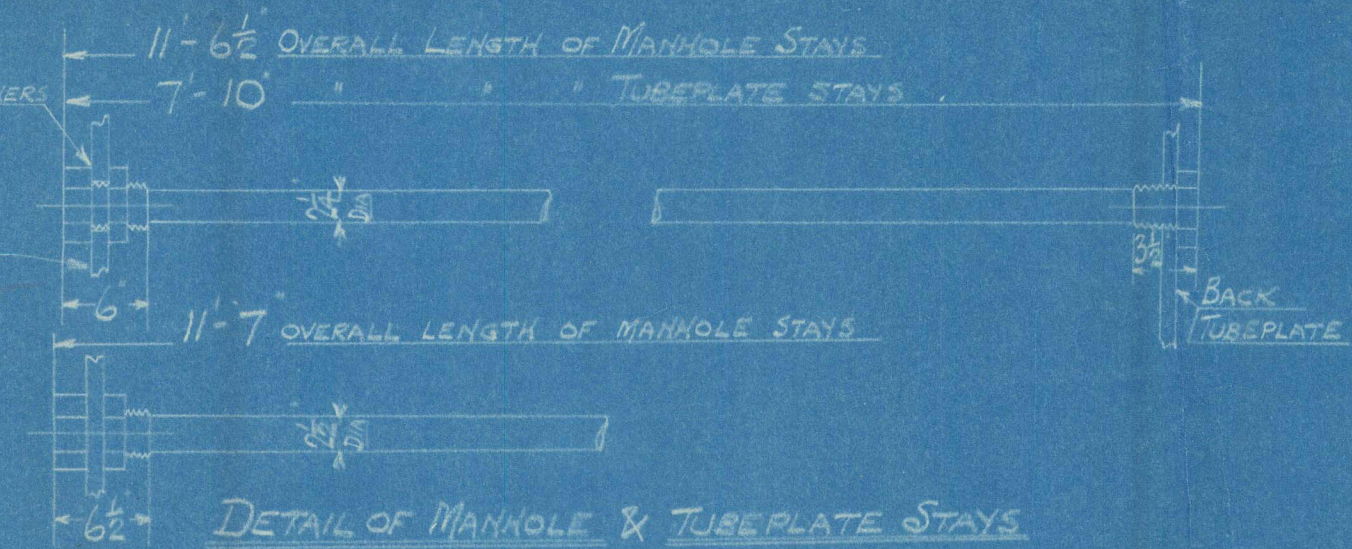
TO PASS LLOYD'S SURVEY

SCALE: 1" = 1/2" ONE FOOT

POSITION	MARK	DIA	(DIA-24) THRS/INCH	SCREWED
BACK	○	1/8	1.844	9
TOP & SIDES	○	1/8	2.199	9
BACK WIDE SPACE & TOP ROW	○	1/8	2.555	9
" TOP CORNER	○	1/8	3.932	9

ALL FIREBOX STAYS SCREWED THRU BOTH PLATES AND NOT FITTED AT EACH END EXCEPT STAYS FROM WING FIREBOX TO SHELL AND STAYS MARKED S IN BACK BOTTOM END WHICH PROJECT 3" AND ARE CAULKED ALL 1/8" NUTS 3" DEEP EXCEPT ON GIRDER TOPS WHERE THE OUTSIDE NUTS ARE 1 1/2" DEEP
ALL 1/8" NUTS 1" DEEP & 2 1/4" NUTS 1 1/2" DEEP

O.T. 3/1880 A. 2021



GLASGOW

D. ROWAN & CO. LTD.
AUXILIARY BOILER
No 848

AS FITTED

SEE ALSO
APPROVED PLAN

Beveridge

GLASGOW REPORT No 46855

RETAIN
© 2021
Lloyd's Register
Foundation

W024 - 0036 (2/2)