

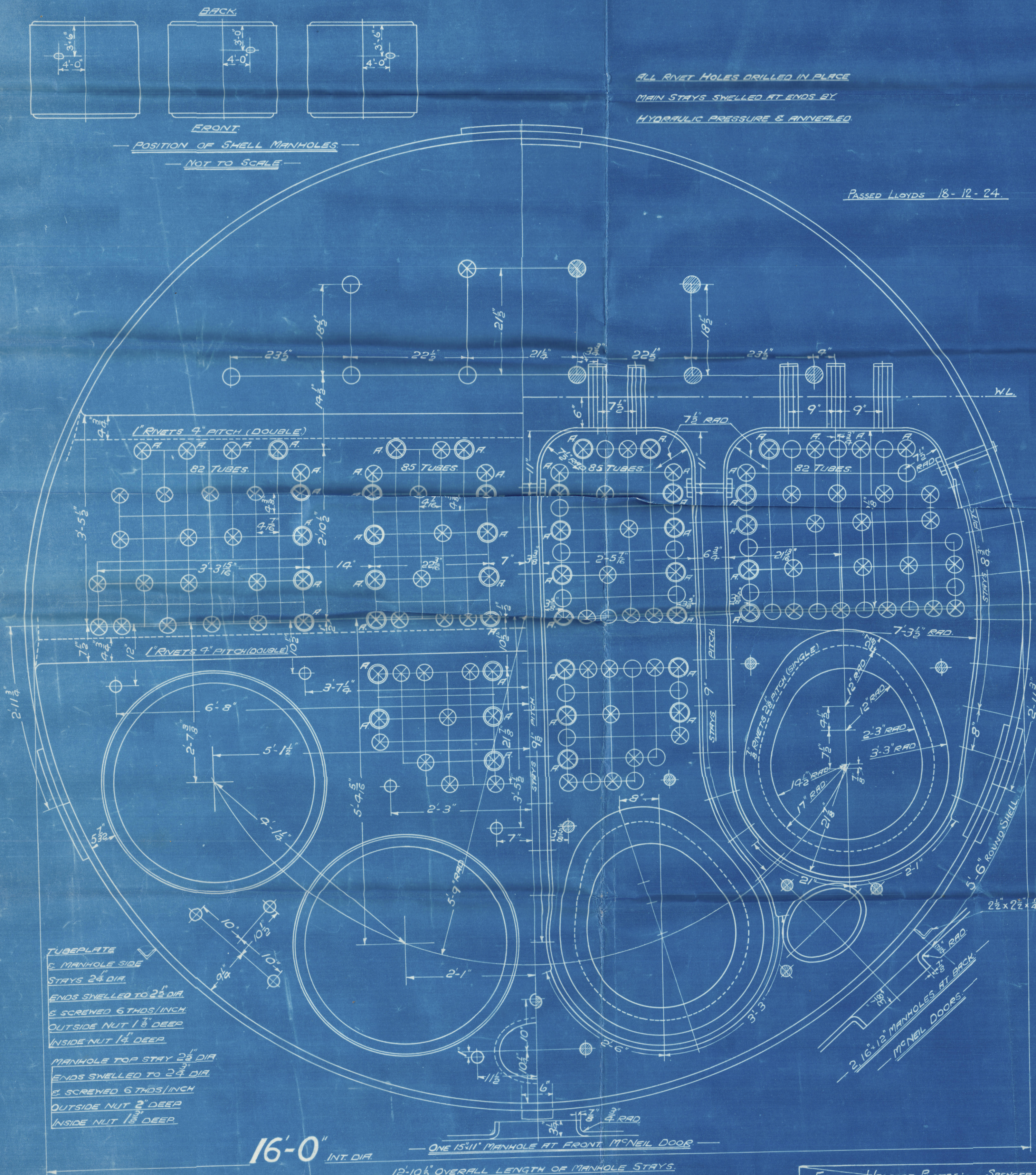
SURFACES		ONE BOILER 3 BOILERS	
TUBES	234.0 #	TO 20 #	
FIREBOX TOP & SIDES	222	666	
BACK	90	270	
TUBEPLATE	59	177	
FURNACES	199	597	
TOTAL HEATING SURFACE	2910 #	8730 #	
GRATE AREA (5'6" GRS)	71.5	214.5	
TUBE AREA	144.3	432.9	
WATER AREA	174	522	
STEAM SPACE	531	1593	
GRATE AREA HEATING SURFACE	1 : 407		
TUBE	1 : 32.7		
AREA	4.95 : 1		
WATER	1 : 2.43		
STEAM SPACE	1 : 7.43		
% BOILER ABOVE FIREBOX	29.8		
HEIGHT OF WATER	32 TONS	96 TONS	

RIVETING	LONG		
	BACK	END	FRONT
RIVET HOLE DIA	1 1/8	1 1/8	1 1/8
PITCH	10 1/2	4-16	3-4 1/2
% PLATE	85.1	63.9	60
% RIVET	87.8	74.9	9.5
% COMBINED	87.9		

LIMITS OF TENSILE STRENGTH & MATERIAL	
SHELL & BUTTSTRAP	30 TO 32 TONS
GIRDERS	28 TO 32 TONS
OTHER PLATES	26 TO 30 TONS
FURNACES	26 TO 30 TONS
MAIN STAYS	28 TO 32 TONS
SCREENED STAYS	26 TO 30 TONS
RIVET BARS	26 TO 30 TONS

ALL RIVET HOLES DRILLED IN PLACE
MAIN STAYS SHELLED AT ENDS BY
HYDRAULIC PRESSURE & ANNEALED

Passed Lloyds 18-12-24



16'-0" INT DIA

12'-10 1/2" OVERALL LENGTH OF MAINHOLE STAYS

8'-8" TUBEPLATE

12'-11" OVERALL LENGTH OF MAINHOLE STAYS

BACK TUBEPLATE

DETAIL OF MAINHOLE & TUBEPLATE STAYS

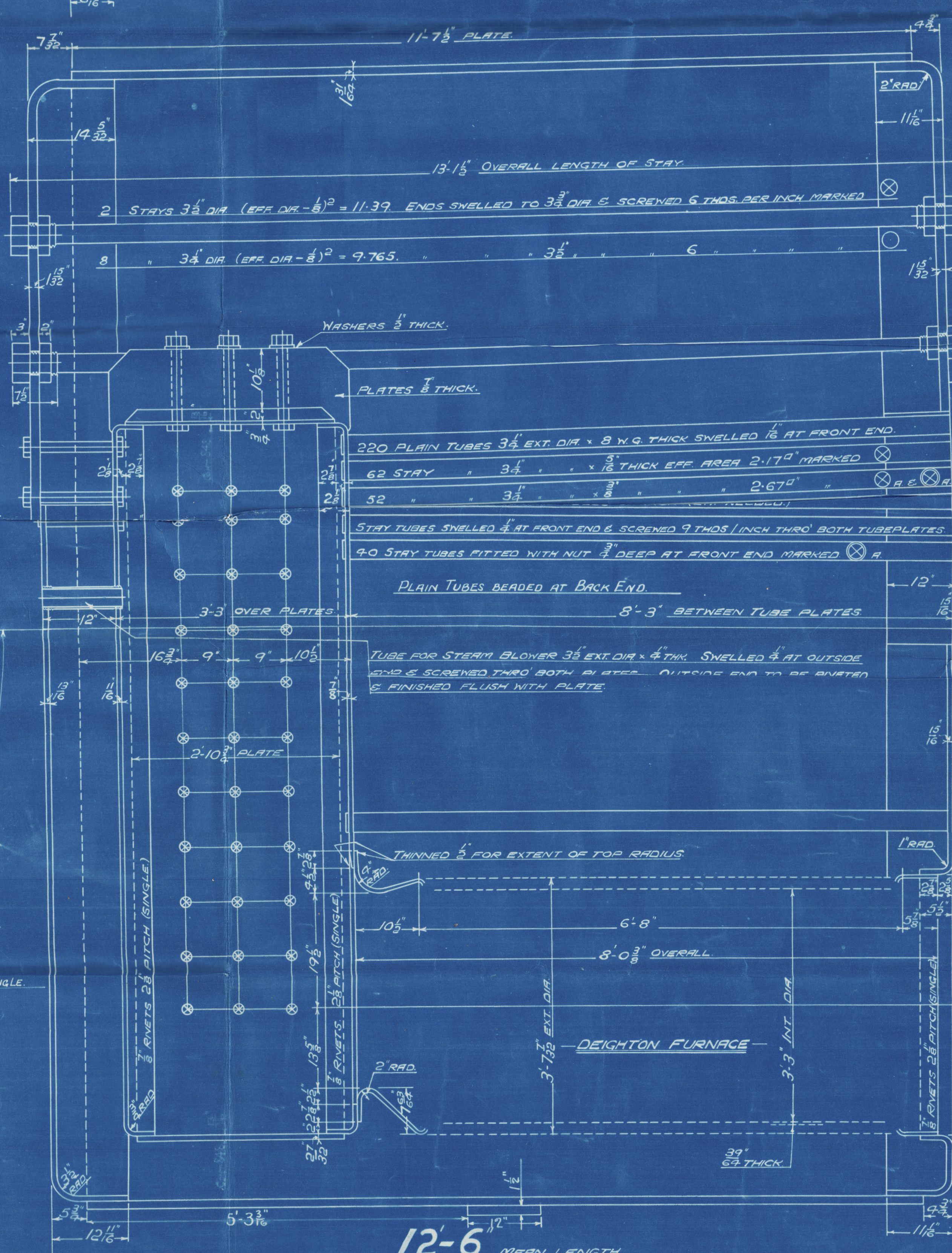
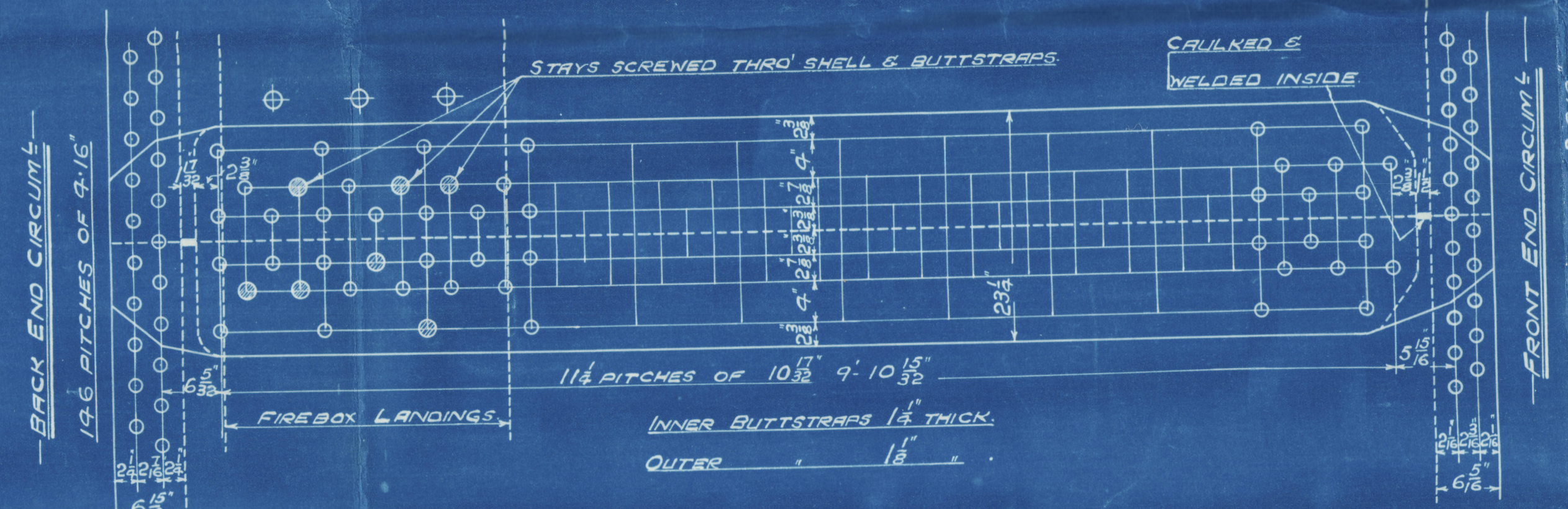
BEVELLED WASHERS FITTED WHERE REQUIRED

END PLATE

DETAIL OF MAINHOLE & TUBEPLATE STAYS

FIREBOX WRAPPER PLATES:- SPENCER PLATES CANCELLED FOR CONT. 848 & PLATES MADE UNIFORM THICKNESS OF 1/2" TO FACILITATE DELIVERY (APPROVED BY LLOYDS 74-9-26)

CANCELLED 27-12-26



12'-6" MEAN LENGTH

MAIN BOILER

3 OFF

CONT. No 822 848

WORKING PRESSURE 220 LBS PER SQ. INCH

TEST 380

TO PASS LLOYDS SURVEY

SCALE - ONE INCH = ONE FOOT

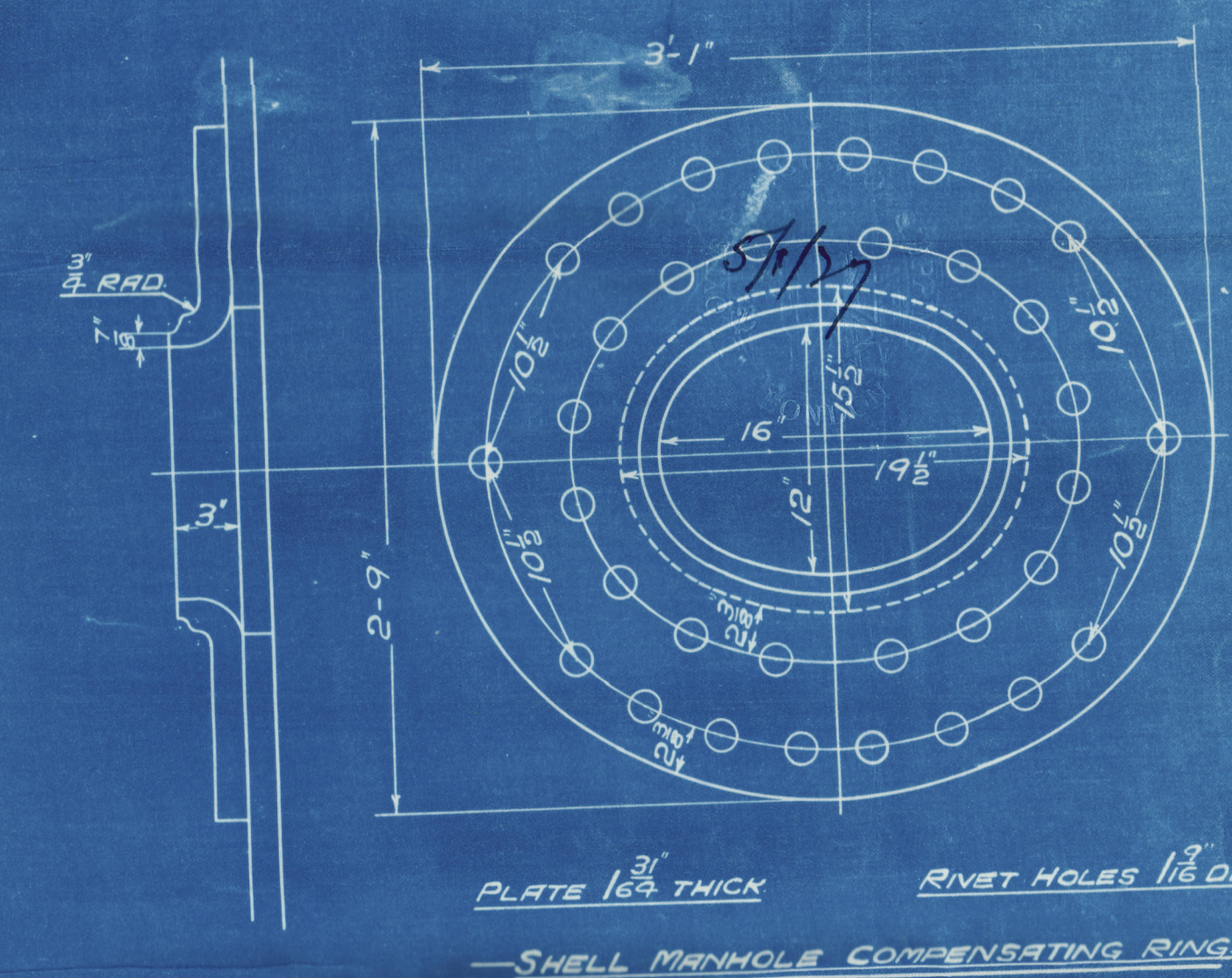
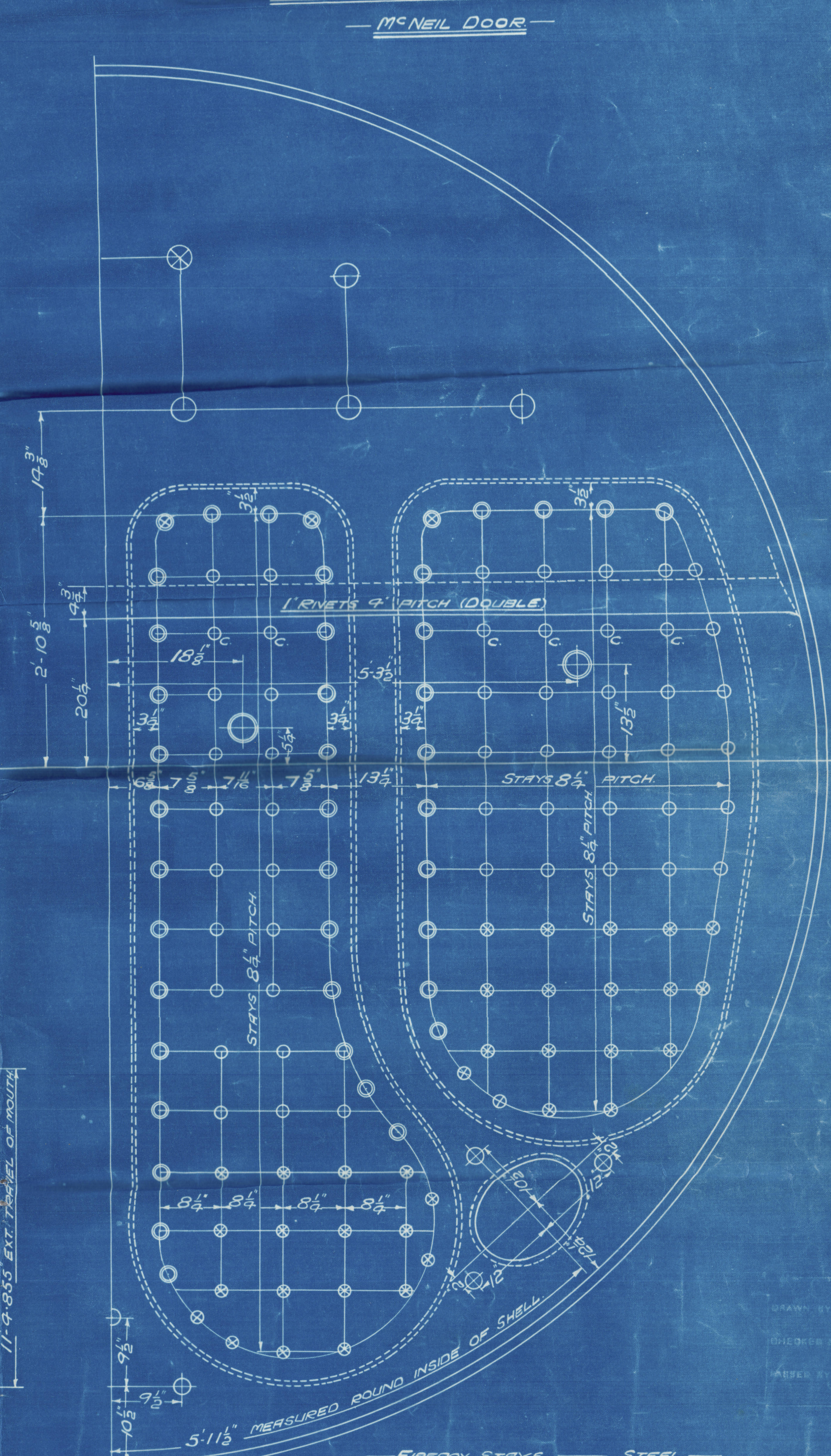


PLATE 1/2" THICK RIVET HOLES 1 1/8" DIA

SHELL MAINHOLE COMPENSATING RING

MCNEIL DOOR



FIREBOX STAYS - STEEL

POSITION	MARK DIA	SCREENED THROUS/INCH
BACK	1 1/8	1.874
TOP & SIDES & BACK BOTT.	1 1/8	2.199
BACK TOP ROW & WIDE SPACE	1 1/8	2.585
CORNER	2 1/8	3.932

ALL FIREBOX STAYS SCREENED THRO' BOTH PLATES & NUT FITTED AT EACH END EXCEPT STAYS FROM WING FIREBOX TO SHELL & STAYS MARKED 'C' IN BACK BOTTOM END WHICH ADJUST & ARE CAULKED ALL 1 1/8 & 1 1/2 NUTS & DEEP EXCEPT ON GIRDER TOPS WHERE THE OUTSIDE NUTS ARE 1 1/2 DEEP ALL 1 1/8 NUTS 1 DEEP & 2 1/4 NUTS 1 1/2 DEEP

OT. 31874

TR-N-50099

TRACED 15TH DEC. 1936

W124-0033



GLASGOW

29-12-26

D. ROWAN & CO LTD

(3) MAIN BOILERS N^o 848

THIS IS A
COPY OF ORIGINAL PLAN

APPROVED 18-5-26
(AMENDED LATER BUT NOW REVERTED TO) 29-12-26
WP-220 LBS

CHAS CONNELL & CO S/S N^o 407

N^o 17392

LLOYD'S TEST

380 LBS

WP-220 LBS

26-4-27

L.C.D.

Beverne

GLASGOW REPORT No 46855

RETAIN



Lloyd's Register
Foundation

W1124-0033