

Geo. Brown & Co.

S. S. "SWAN"

N. 157.

Midship Section.

Gr. R. Regt. N. 18704.

RET



© 2020

Lloyd's Register
Foundation

40/57 MIDSHIP SECTION

DIMNS:- 45'-0"BP-10'-9"-6'-0" MLD

SCALE 1/2" = 1'-0"

To CLASS A.I. AT LLOYDS FOR RIVER PURPOSES ONLY

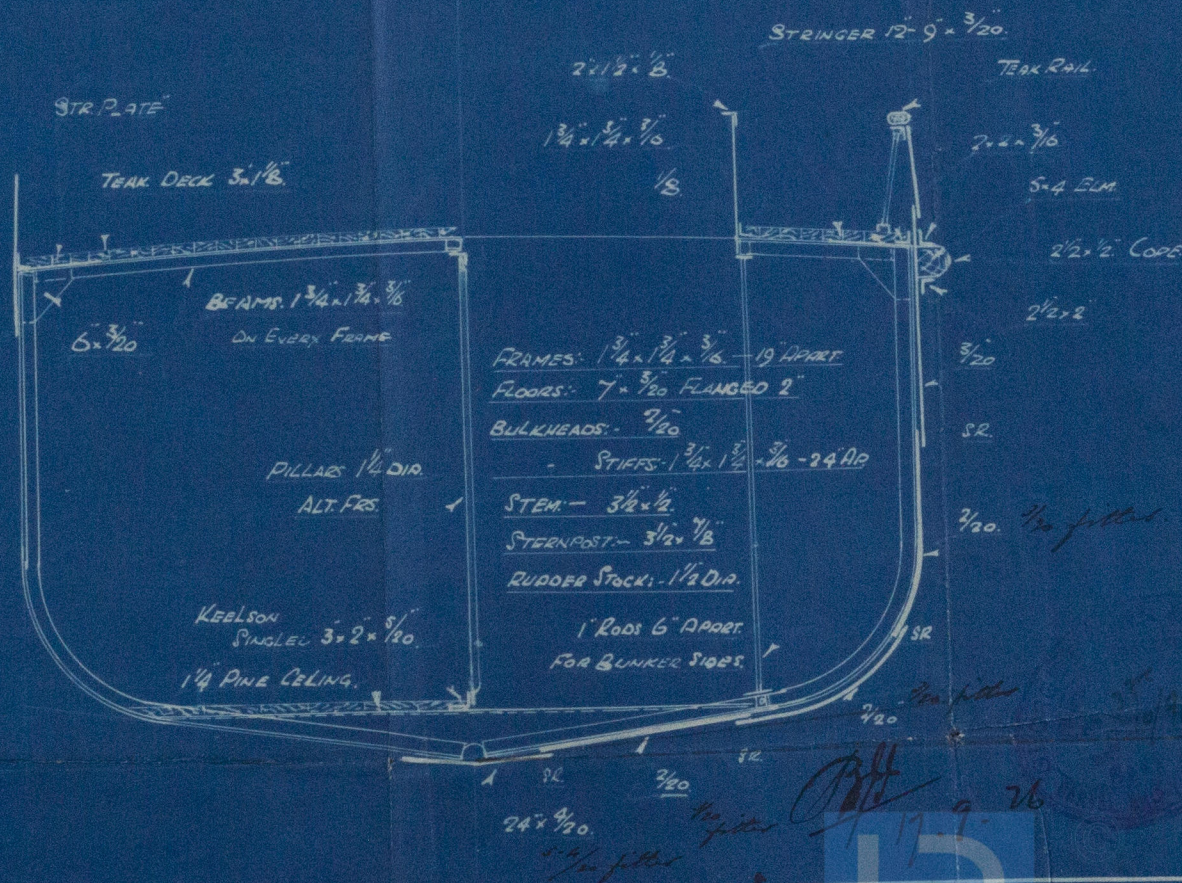
Turning Lances in the Malay Annals

EQUIPMENT.

- 1- 3/4 CWT. BOWER ANCHOR EX STOCK.
- 30 FMS. 3/8" CHAIN CABLE
- 40 FMS. 4" MANILLA.
- 15 FMS. HEAVING LINE

RIVETING.

- RIVETS:- 7/16" DIA.
- BUTTS. OF KEEL & SHEERSTAKE D.R.
- STRINGER PLATE D.R.
- ALL OTHER BUTTS & SEAMS S.R.



WILLIAMS