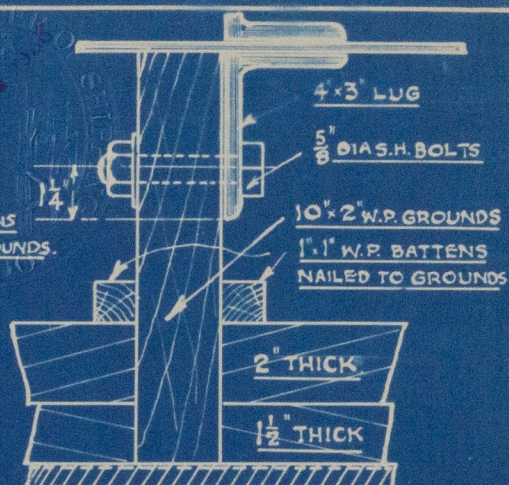
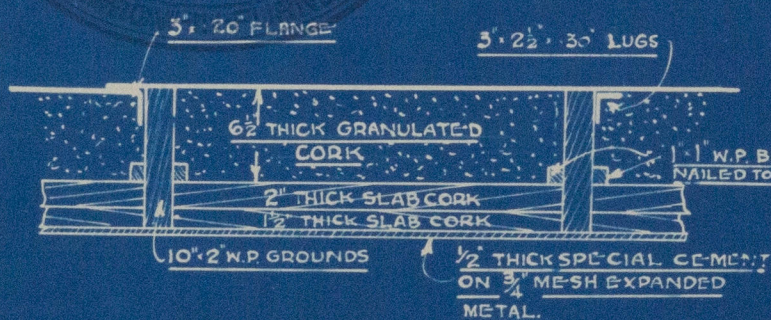


PLAN OF BULKHEAD 155

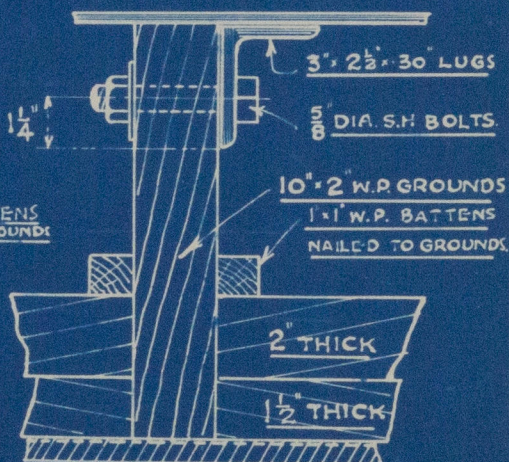


DETAIL OF BOLTING.



PLAN AT LONG^L BHDS. 165 TO 175 P&S

BHD 165 INWAY OF HATCH TRUNK SIMILAR



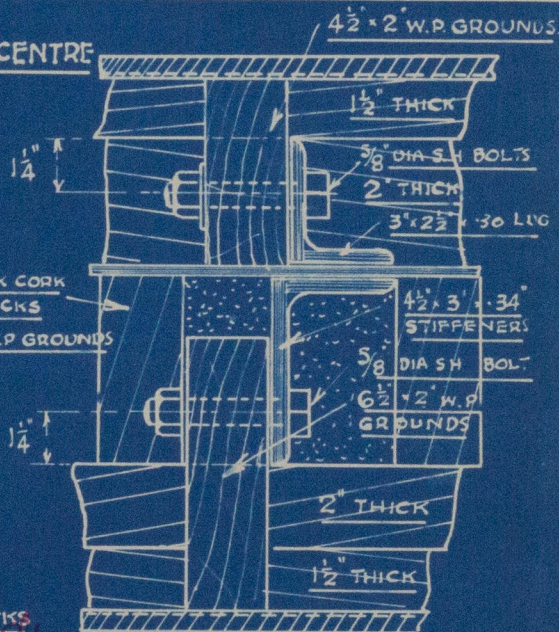
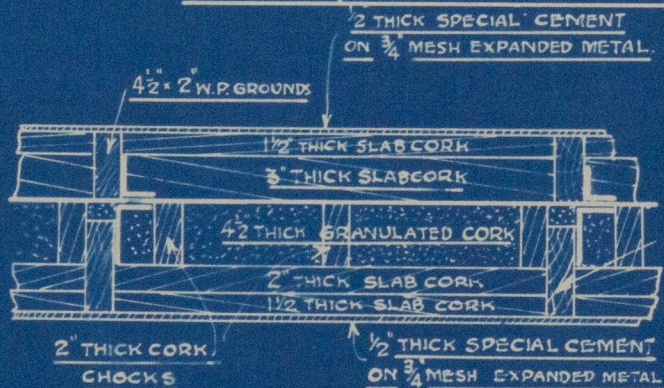
DETAIL OF BOLTING

Newalls Insulation Company
BRANCH OF TURNER & NEWALL LTD.
WASHINGTON STATION,
CO. DURHAM.

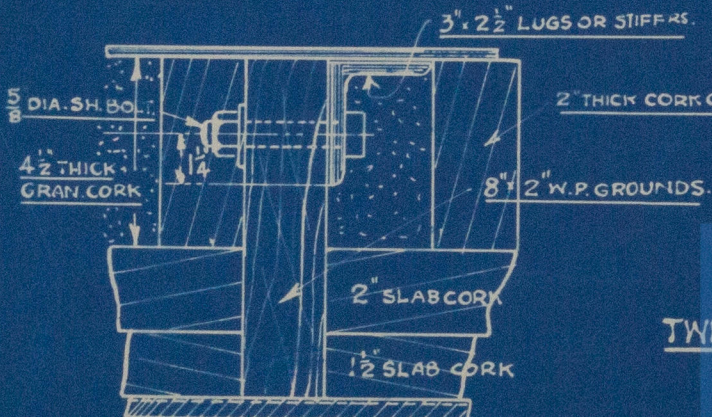
28 OCT. 1936

PLAN AT LONG^L BHDS 155 TO 165 P & S & CENTRE

ALSO INWAY OF BRINE TANK RM BHDS



DETAIL OF BOLTING.
LONG BHDS 155-165 P&S.



DETAIL OF BOLTING

CENTRE LONG^L BHD & B.T. RM BHDS.

INSULATION DETAILS (5T)

TWEEN DK BHDS. 155 AND MINOR BHDS.

SCALE:- 1" = 1 FOOT
3" = 1 FOOT

CONT NO N/1564/MC.

SHIP NO 712

VICKERS ARMSTRONGS
NO 712



(6)



© 2020

Lloyd's Register
Foundation
W1122 0016